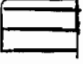
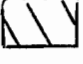

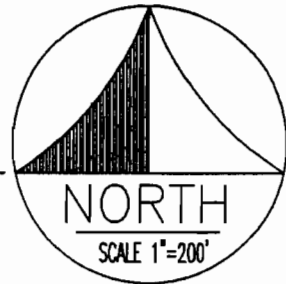
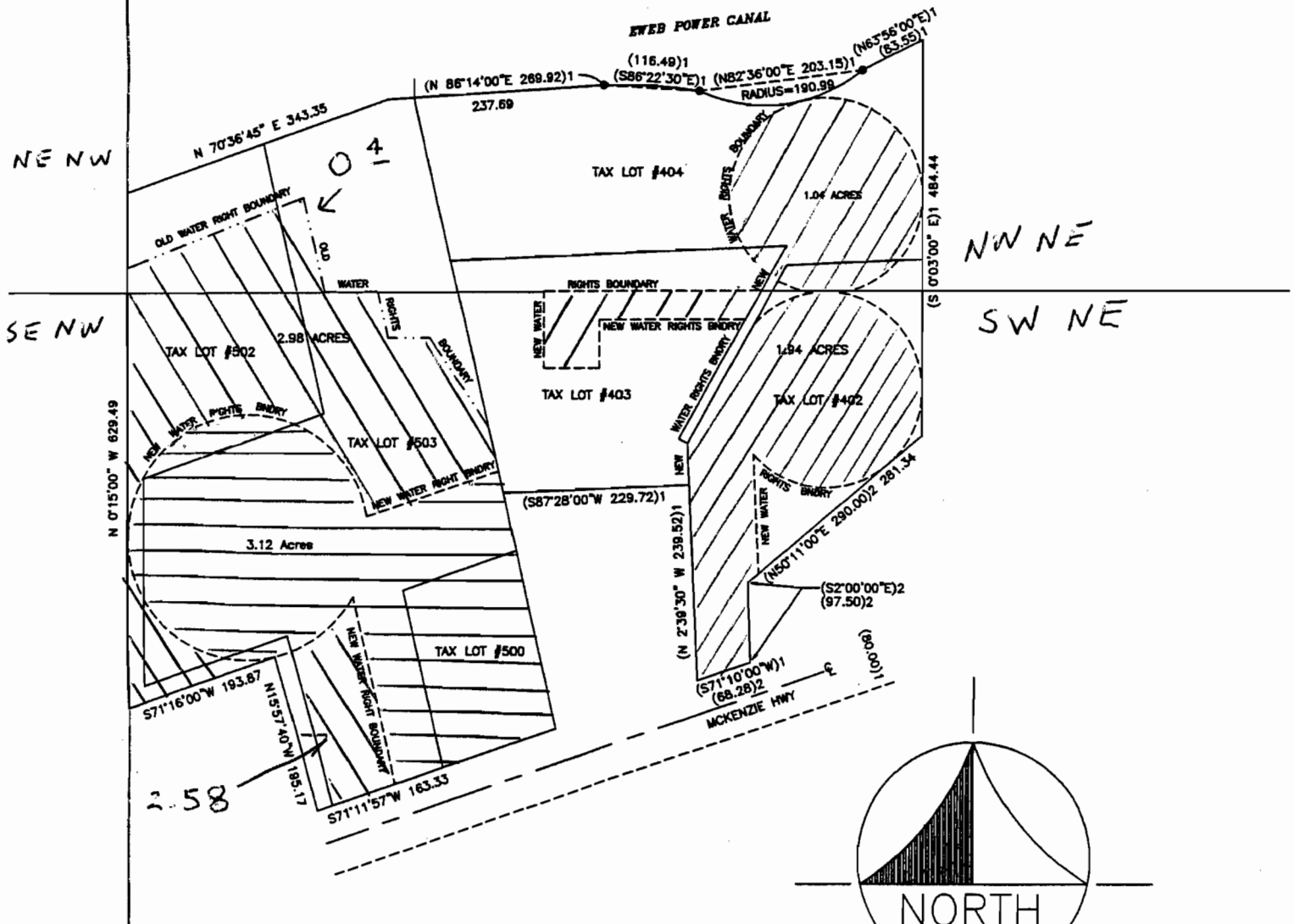


Temporary Transfer for John Johnson

T17S, R1E Sec 10

TO NW 1/4 COR. ↑

	Remaining	3.12
	from lands	2.98
	to lands	2.98



RECEIVED

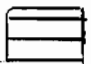


JUN 27 2008

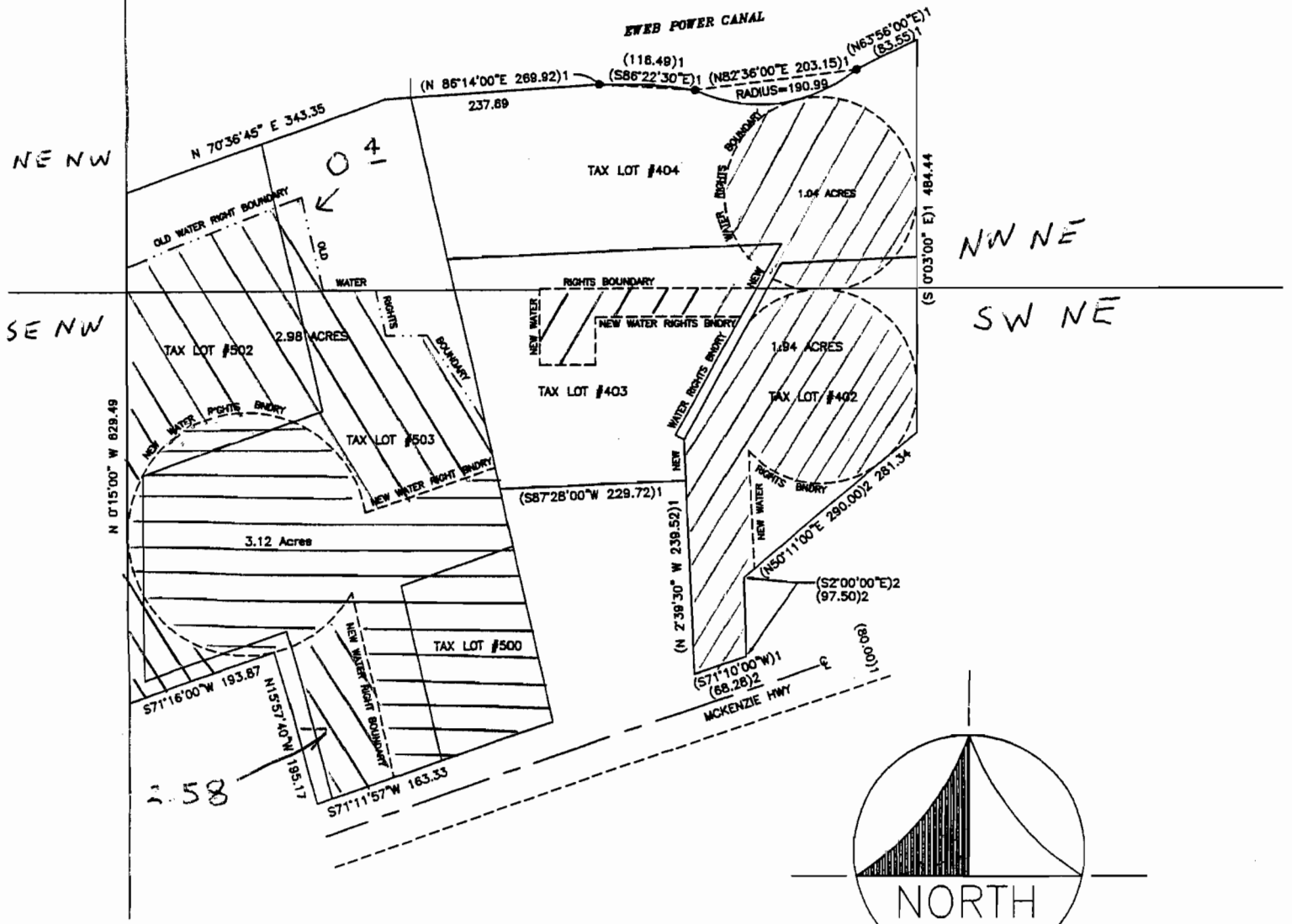
WATER RESOURCES DEPT
SALEM, OREGON

Temporary Transfer for John Johnson

T17S, R1E Sec 10

To NW 1/4 Cont. →

	Remaining	3.12
	from lands	2.98
	to lands	2.98






RECEIVED

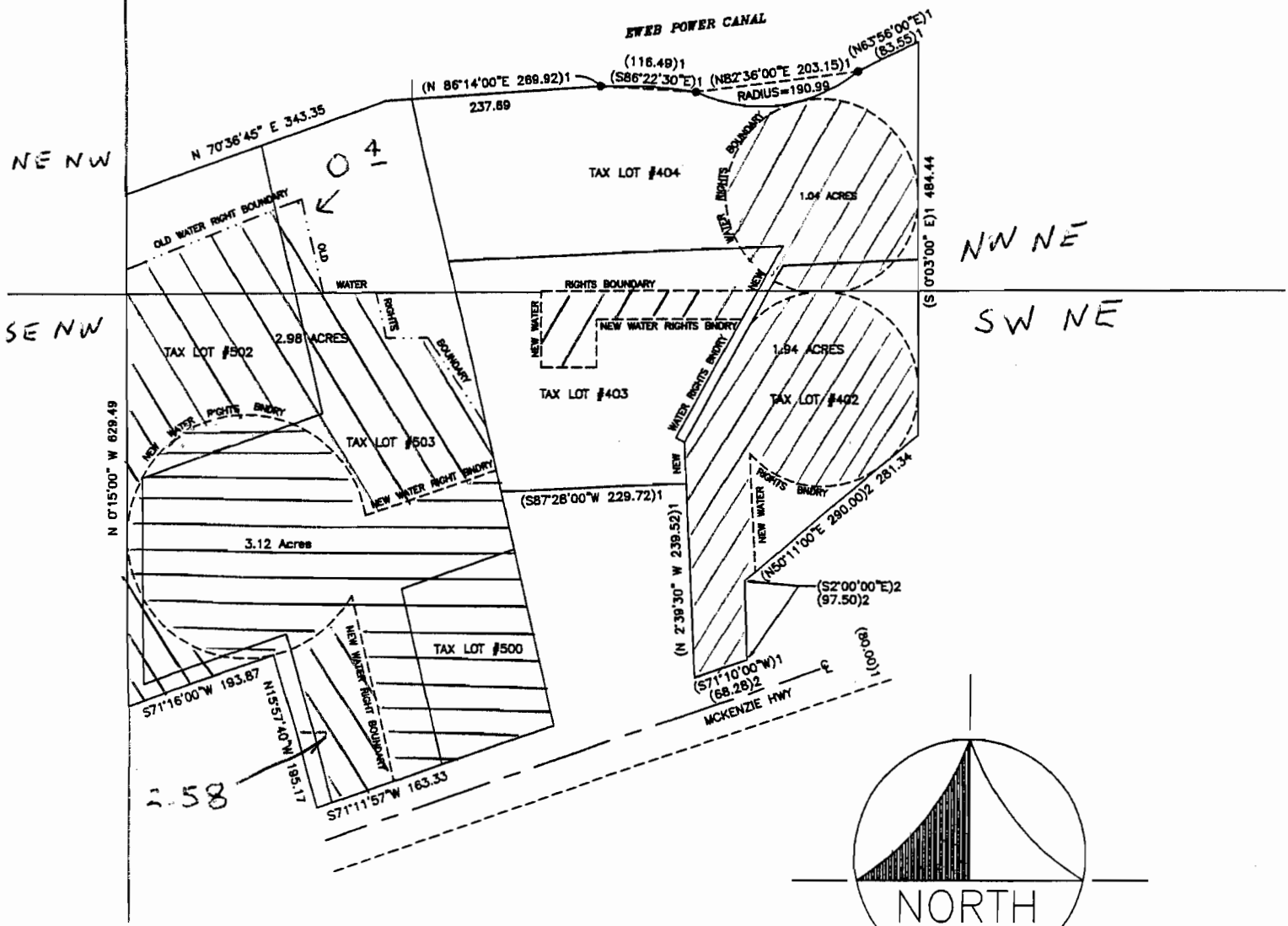
JUN 27 2008

WATER RESOURCES DEPT
SALEM, OREGON

Temporary Transfer for John Johnson
 T17S, R1E Sec 10

76 N 1/4 COR →

-  Remaining 3.12
-  from lands 2.98
-  to lands 2.98

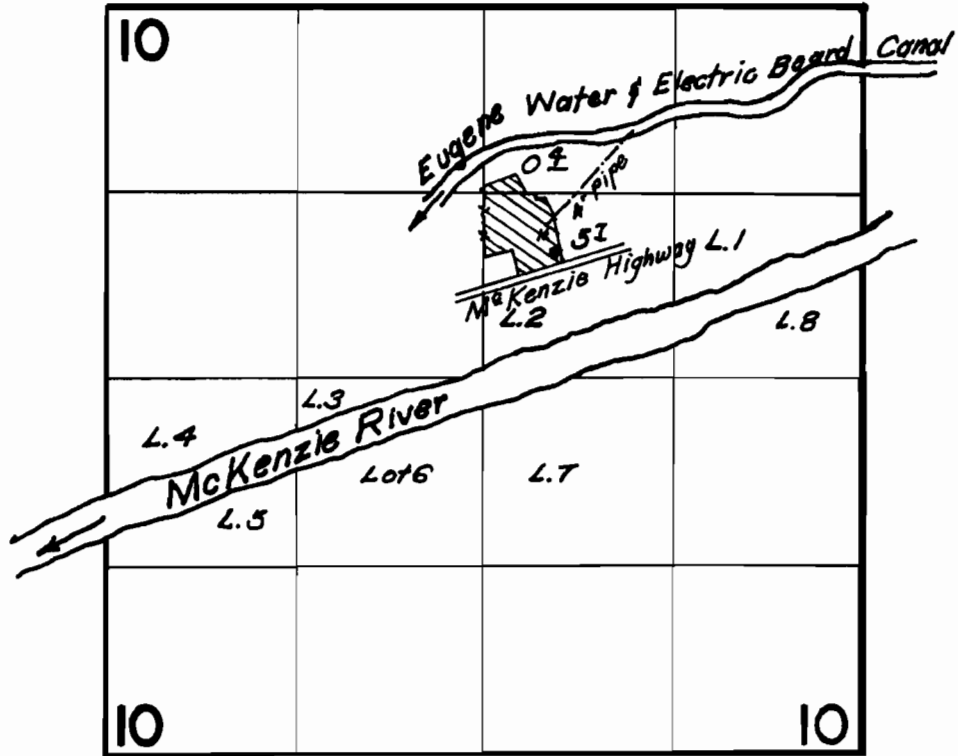


RECEIVED

JUN 27 2008

WATER RESOURCES DEPT
 SALEM, OREGON

T.17S. R.1E.W.M.



FINAL PROOF SURVEY
UNDER

Application No. 37294 Permit No. 27776
IN NAME OF

William M. Elston

Surveyed 22 May 1962, by Carl R. Baker