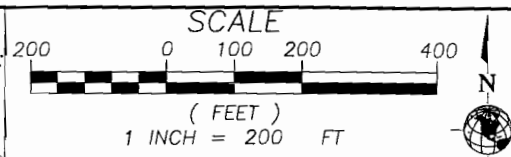
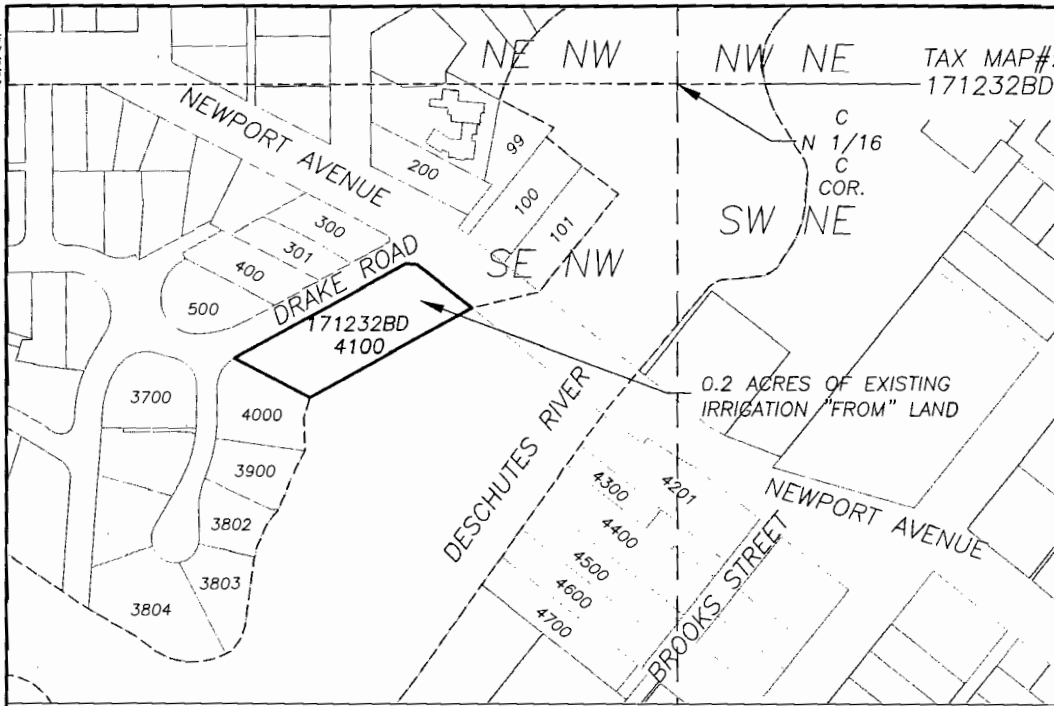


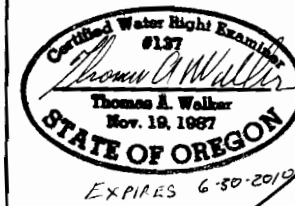
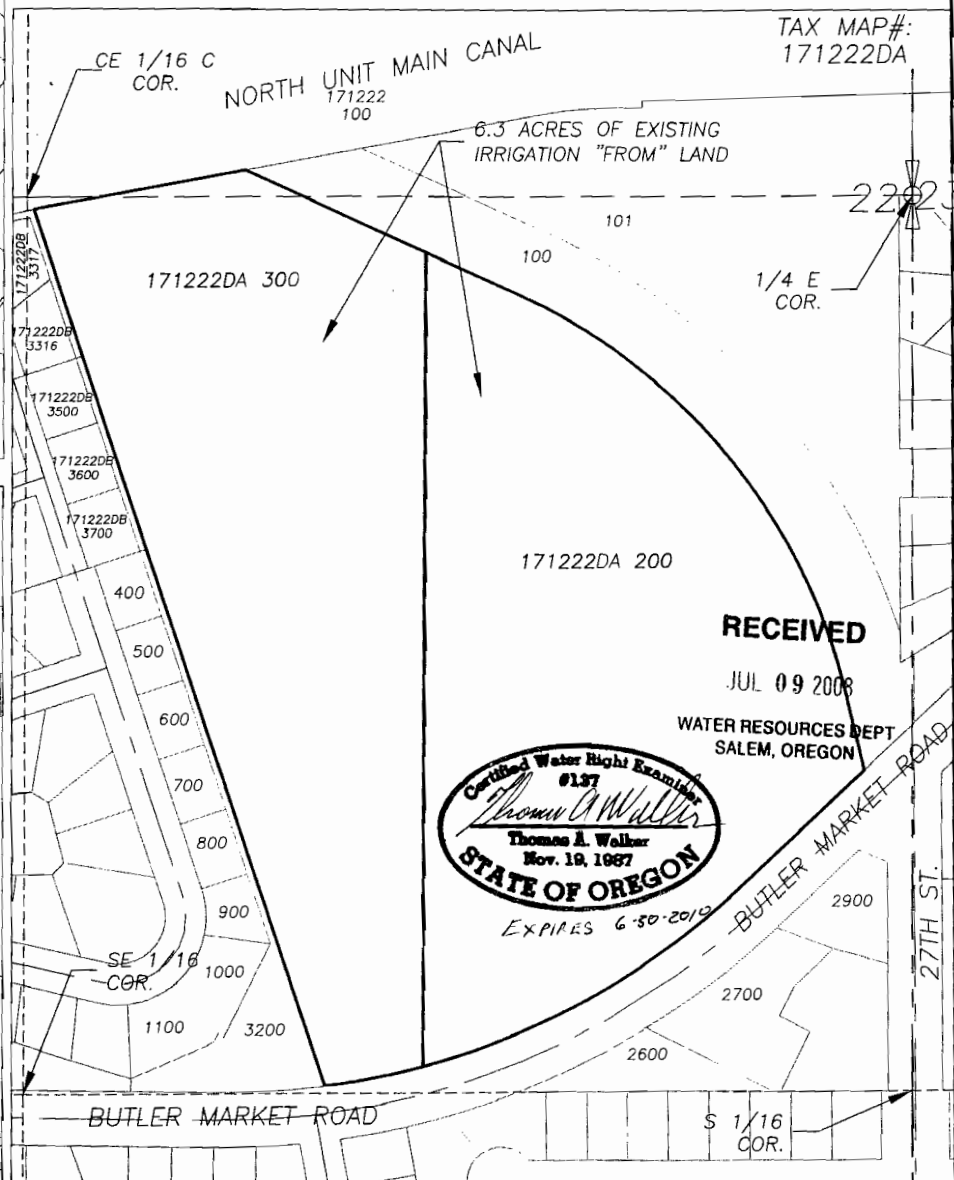
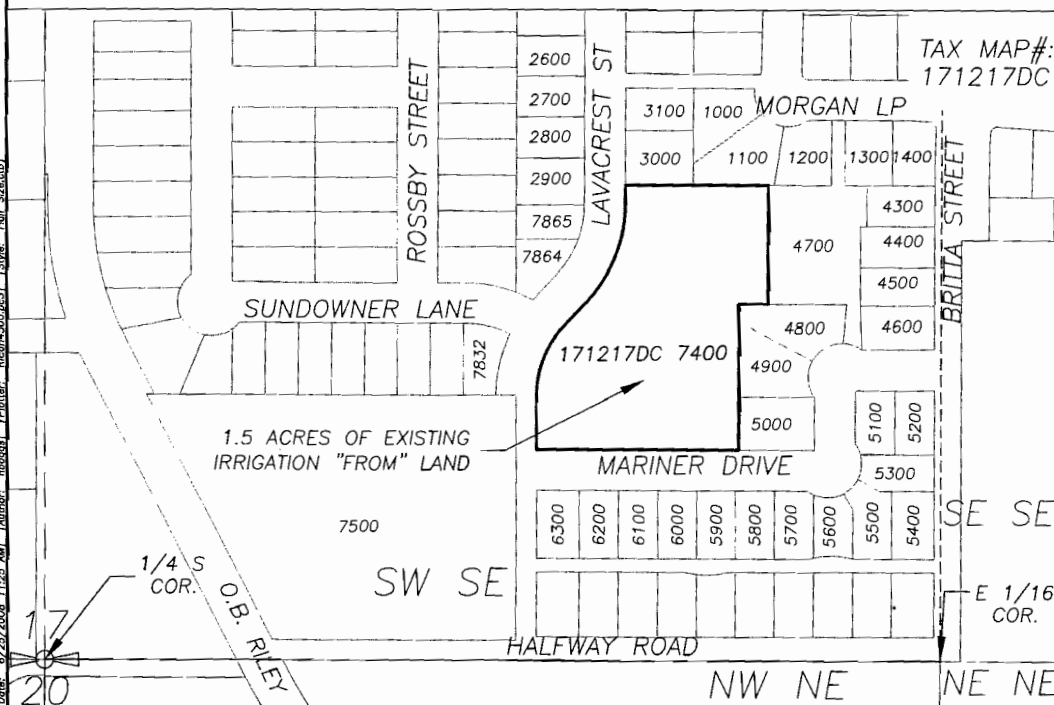
DWG INDEX:
17223 - 1999



LEGEND
EXISTING PLACE OF USE TAXLOT ("FROM" LANDS)

NOTE: THIS MAP WAS PREPARED FOR THE PURPOSE OF IDENTIFYING THE LOCATION OF WATER RIGHTS. THIS MAP IS NOT INTENDED TO PROVIDE DIMENSIONS OR THE LOCATION OF PROPERTY OWNERSHIP LINES.

[Professional Engineer Seal: State of Oregon, No. 15526, Thomas A. Walker, Nov. 19, 1987]



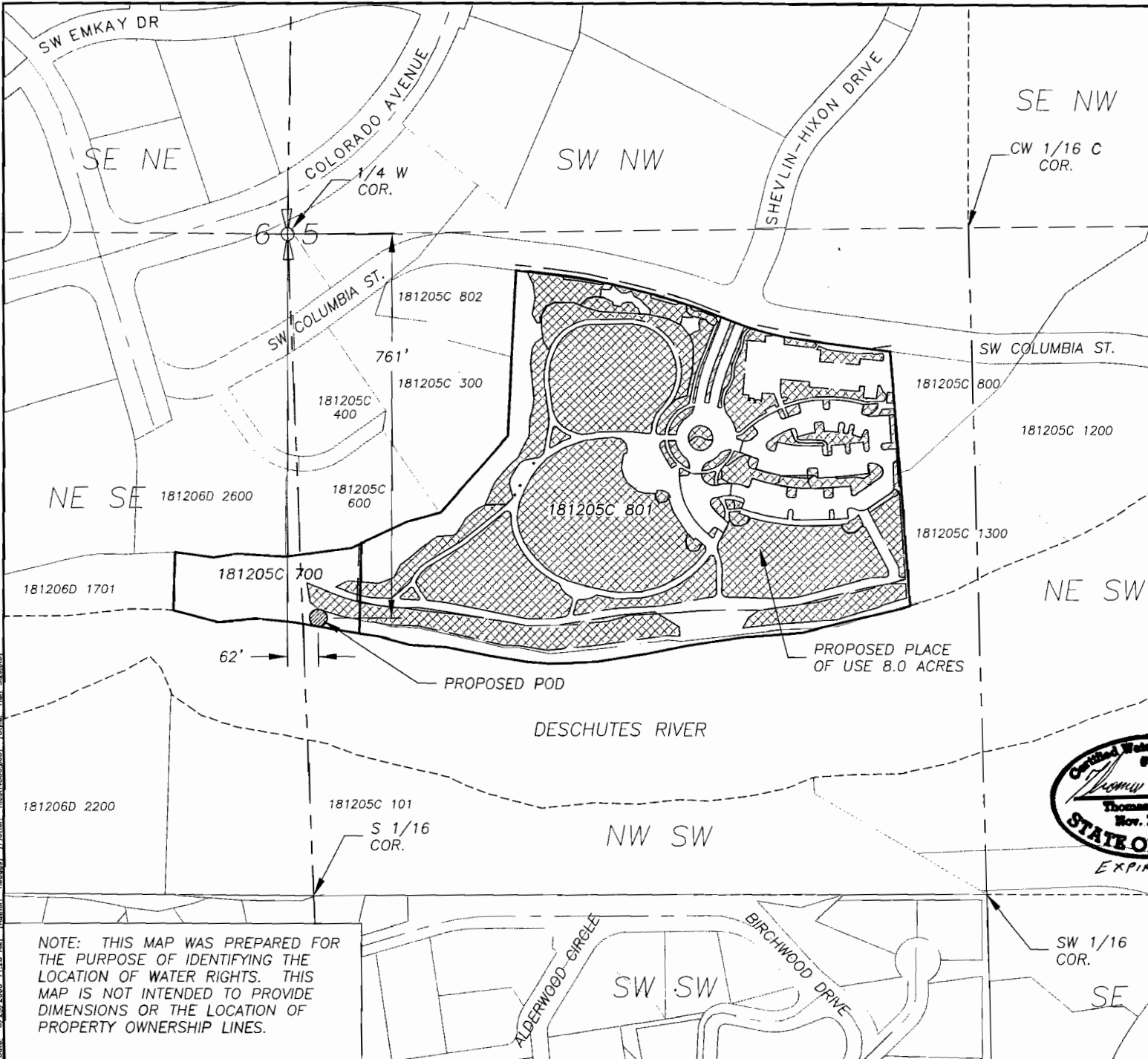
RECEIVED
JUL 09 2008
WATER RESOURCES DEPT
SALEM, OREGON

WHPacific
200 NW Embury Dr.
Bend, OR 97702
503-338-0288 Fax 503-338-4229
www.whpacific.com

BEND METRO PARK AND RECREATION DISTRICT
RIVER BEND PARK
WATER RIGHTS TRANSFER
APPLICATION EXHIBIT - "FROM" LANDS
DRAWING FILE NAME: 35626-land-RiverBend
PROJECT NO. 35626.1200
SCALE: 1" = 200'

DESIGNED BY: JMW/NMB	CHECKED BY: NMB
DRAWN BY: CLB	APPROVED BY: NMB
LAST EDIT: 6/25/2008	PLOT DATE: 6/25/2008
DATE BY: REV	REVISION

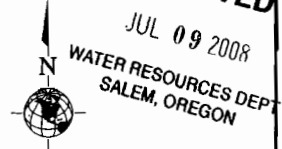
PLANS INDEX:
 17233 - 17248



NOTE: THIS MAP WAS PREPARED FOR THE PURPOSE OF IDENTIFYING THE LOCATION OF WATER RIGHTS. THIS MAP IS NOT INTENDED TO PROVIDE DIMENSIONS OR THE LOCATION OF PROPERTY OWNERSHIP LINES.

(Date: 6/25/2008) (Drawn by: NMB/CLB) (Checked by: TAW) (Approved by: TAW) (Plot Date: 6/25/2008) (Scale: 1" = 200') (Project No: 35626.1200) (Drawing File Name: 35626.1200-RiverBend) (Revision: 01) (Author: NMB/CLB) (Title: WATER RIGHTS TRANSFER APPLICATION EXHIBIT)

RECEIVED



JUL 09 2008

WATER RESOURCES DEPT
 SALEM, OREGON



SCALE
 (FEET)
 1 INCH = 200 FT

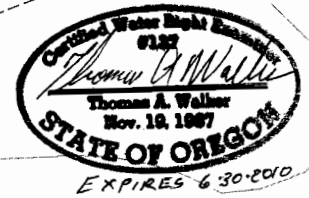
PROPERTY OWNER/APPLICANT:
 BEND METRO PARK AND RECREATION DISTRICT
 200 PACIFIC PARK LANE
 BEND, OR 97701

REQUEST:
 CHANGE PLACE OF USE FOR 8.0 ACRES OF IRRIGATION WATER RIGHTS AND OBTAIN AN ADDITIONAL POINT OF DIVERSION.

SUBJECT "TO" PROPERTIES:
 TL 181205C 801
 TL 181205C 700

LEGEND

- PROPOSED PLACE OF USE FOR IRRIGATION RIGHTS ("TO LANDS")
- PROPOSED POD



WHPacific
 220 NW Emkay Dr
 Bend, OR 97702
 503-441-0888
 www.whpacific.com

BEND METRO PARK AND RECREATION DISTRICT
 RIVER BEND PARK
WATER RIGHTS TRANSFER APPLICATION EXHIBIT
 OREGON
 DRAWING FILE NAME: 35626.1200-RiverBend
 PROJECT NO. 35626.1200
 SCALE 1" = 200'
 BEND

DESIGNED BY:	TAW/NMB	CHECKED BY:	TAW
DRAWN BY:	NMB/CLB	APPROVED BY:	TAW
LAST EDIT:	6/25/2008	PLOT DATE:	6/25/2008
DATE:	BY:	REVISION:	OK/TAPE

SHEET 1/2
WR TR1.0