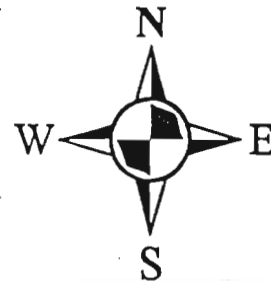


Underhill

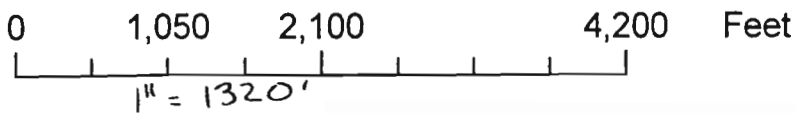
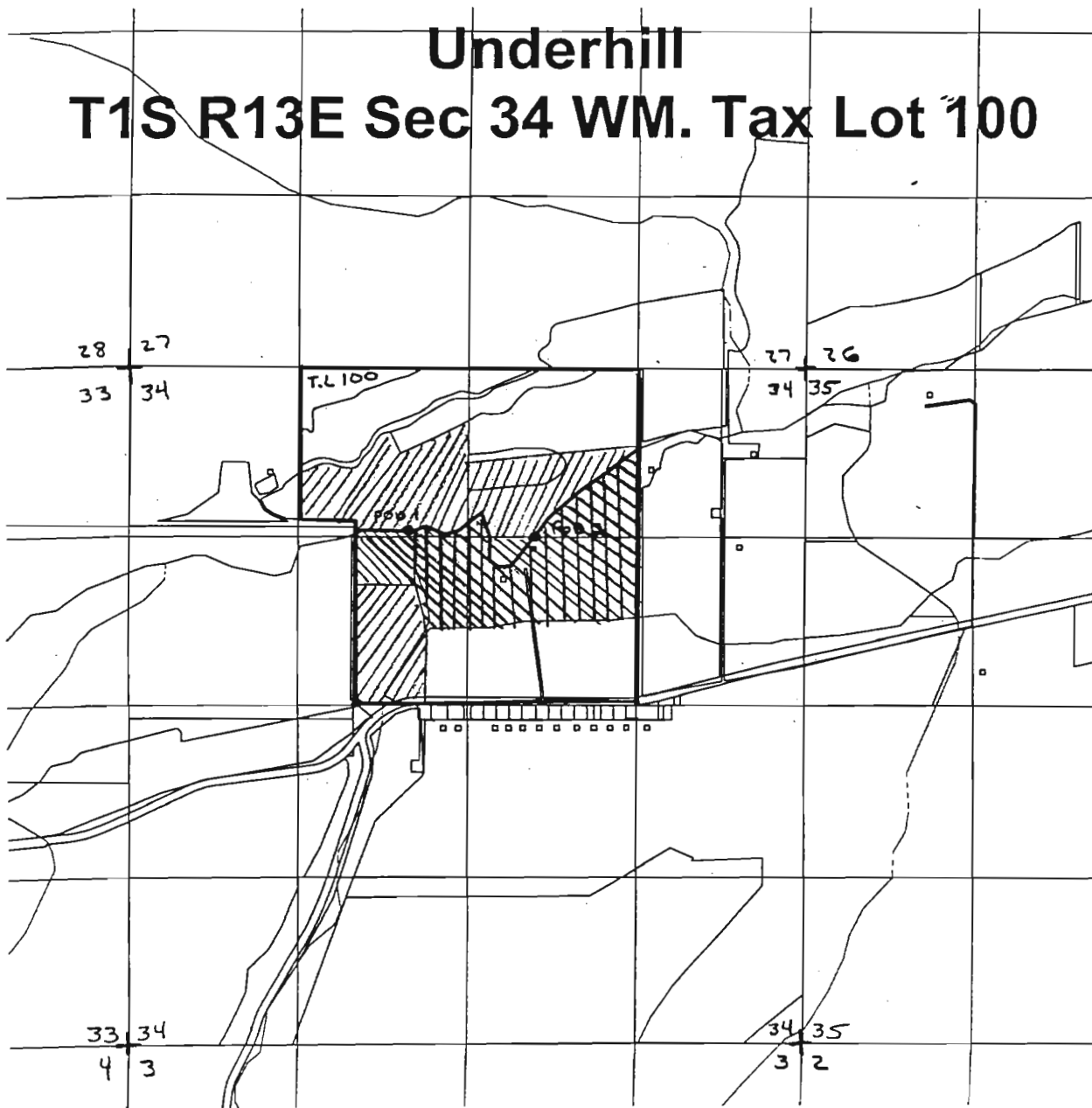
T1S R13E Sec 34 WM. Tax Lot 100



RECEIVED

JUL 17 2008

WATER RESOURCES DEPT
SALEM, OREGON



Points of Diversion

1) 1220' south and 2200' east from the NW corner, section 34.

2) 1350' south and 3270' east from the NW corner, section 34.

- C-5674
- C-5674-Transfer "from" Lands
- Transfer "to" Lands

JUN 17 2008

RECEIVED

Fm 213
T 199

1
11.0

2
41.2

T 1 S
R 13 E
SEC 34

5
17.9

3
21.2

4
25.4

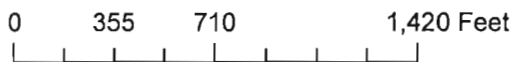
March 20, 2008

WASCO COUNTY



USDA United States Department of Agriculture
Farm Service Agency

This acreage is for FSA program purposes only. No warranty is made for any other use.



2007

Fm 213
T- 199



T 1 S
R 13 E
SEC 0

RECEIVED
JUL 17 2008
WATER RESOURCES DEPT
SALEM, OREGON

USDA Farm Service Agency

WASCO COUNTY

This acreage is for FSA program purposes only. No warranty is made for any other use.



April 05, 2007

