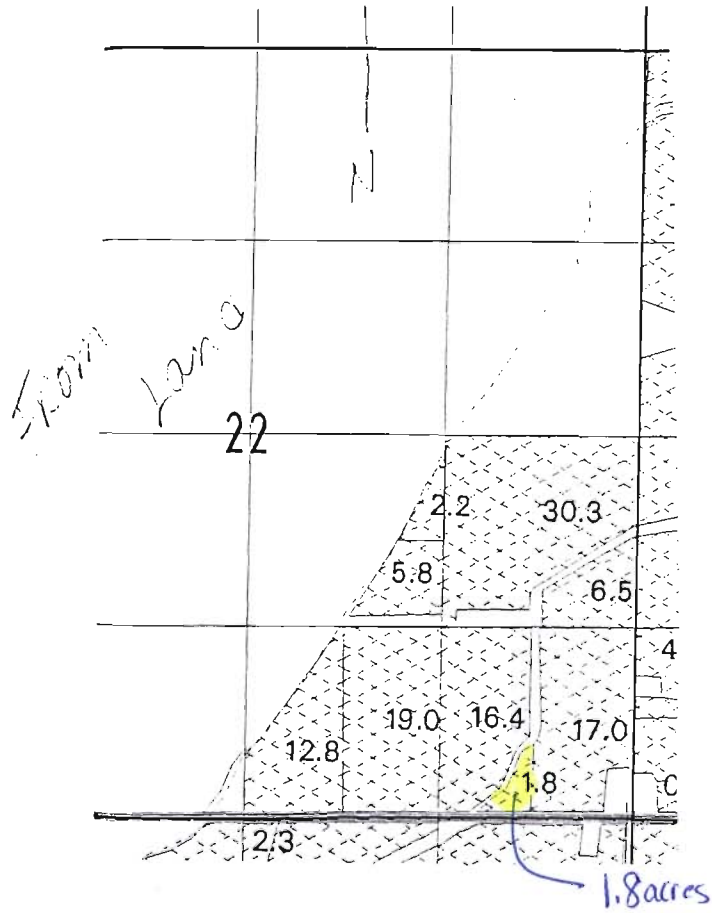


T. 4 N., R. 29 E., W. M.
Section 22



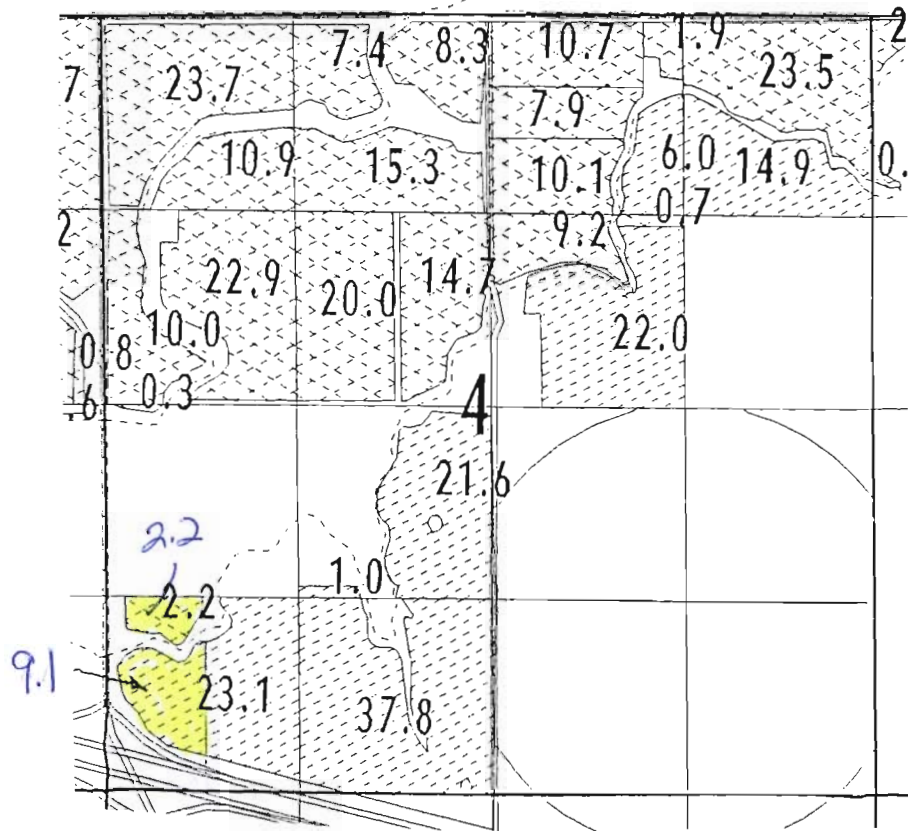
Scale 1 in = 1320'
"FROM LANDS"

RECEIVED

AUG 04 2008

WATER RESOURCES DEPT.
SALEM, OREGON

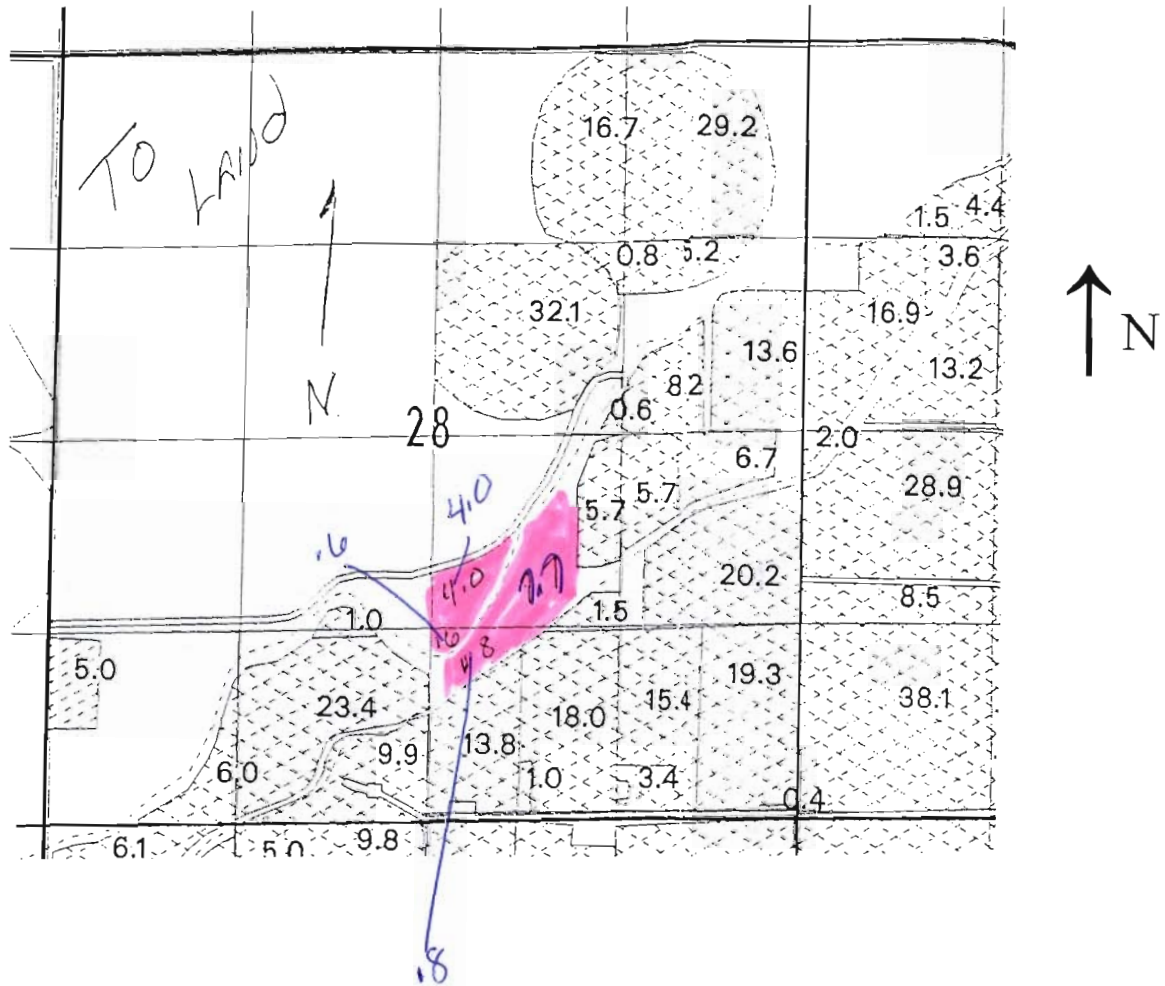
T. 3 N., R. 29 E., W. M.
Section 4



Scale 1 in = 1320'
"FROM LANDS"

RECEIVED
AUG 04 2008
WATER RESOURCES DEPT.
SALEM, OREGON

T. 4 N., R. 29 E., W.M.
SECTION 28



Scale 1 in. = 1320'
"TO LANDS"

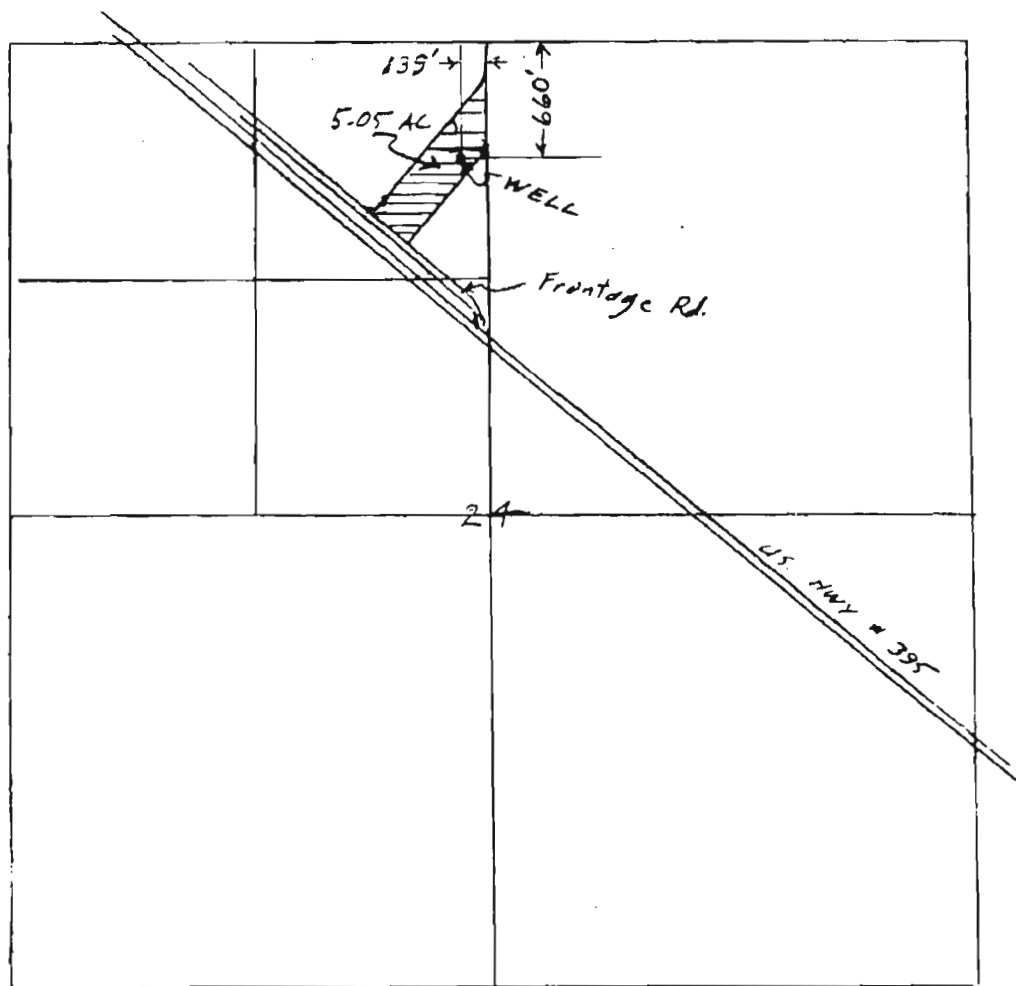
RECEIVED
AUG 04 2009
WATER RESOURCES DEPT.
S. OREGON

T4N, R28E, W.M. UMATILLA CO. OREGON

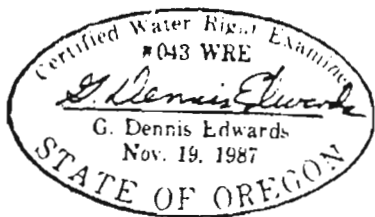
THIS MAP IS FOR IDENTIFYING THE LOCATION OF WATER RIGHTS ONLY AND IS NOT INTENDED TO SHOW PROPERTY LINES OR DIMENSIONS.

DEPARTMENT OF REVENUE DEPT. SALEM, OREGON

SCALE: 1" = 1000'



Application No. G-11577



APPLICATION MAP
FOR TOM ABLE
12/7/88 Job # W8912023
2/16/89
REVISED EDWARDS SURVEYING Box 763
567-3336 HERMISTON, OR 97228