

N
SCALE:
1" = 400'

NOTES
THIS MAP DOES NOT CONSTITUTE A BOUNDARY SURVEY. FOR BOUNDARY INFORMATION SEE MAP B-282, TILLAMOOK COUNTY SURVEY RECORDS.
THE PURPOSE OF THIS MAP IS TO SHOW THE LOCATION OF THE POINT OF DIVERSION FOR THE WATER RIGHTS TRANSFER.
THE BOUNDARY SHOW WAS DRAWN AS PER RECORD VALUES FROM MAP B-282.

LEGEND
● INDICATES FOUND MONUMENT AS NOTED.
() INDICATES RECORD VALUE FROM MAP B-282.
{ } INDICATES RECORD VALUE FROM MAP B-479.
NO () OR { } INDICATES MEASURED VALUE.

Certified Water Right Examiner
377 WRE
Terry L. Jones
Terry L. Jones
May 11, 1984
STATE OF OREGON
RENEWAL DATE: JUNE 30, 2009

APPLICATION # G-16687
TRANSFER OF WATER RIGHTS CERTIFICATE
VOLUME 5, PAGE 2164
±126.0 ACRES TOTAL ACREAGE
- ±5.7 ACRES AREA OF EXISTING BUILDINGS
±120.3 ACRES NET AREA TO BE IRRIGATED

RECEIVED
AUG 14 2008
WATER RESOURCES DEPT.
SALEM, OREGON

SITE\CALLENWR.DWG
C-ALLEN.CR5

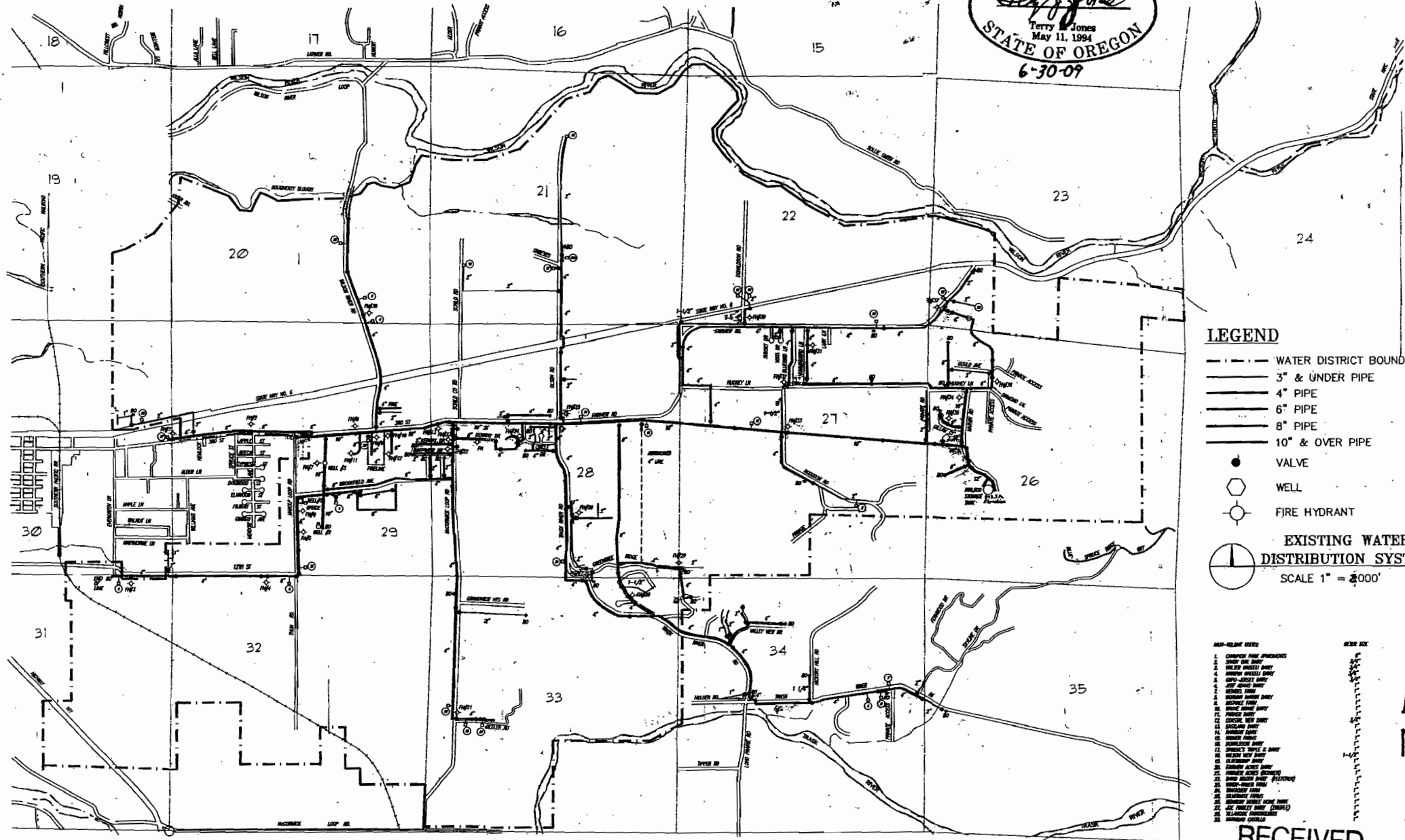
SURVEY BY:
BAYSIDE SURVEYING
11765 HWY 101 SOUTH
TILLAMOOK, OR. 97141
(503) 842-5551

WATER RIGHTS MAP FOR:
CASEY ALLEN
PORTIONS OF THE
NW 1/4 & NE 1/4 SECTION 13, T1S, R10W, W.M.
SW 1/4 & SE 1/4 SECTION 12, T1S, R10W, W.M.
TILLAMOOK COUNTY, OREGON

DATE	EQUIPMENT	FIELD	DRAWN	CHECKED	JOB NO.
FEB. 21, 2008	TOPCON GPT-3003W TDS NOMAD	TLJ/RJC	GAC	TLJ	

FROM PLACE OF USE MAP
"OLD PLACE OF USE"

TIS R9W.



LEGEND

- WATER DISTRICT BOUNDARY
- 3" & UNDER PIPE
- 4" PIPE
- 6" PIPE
- 8" PIPE
- 10" & OVER PIPE
- VALVE
- WELL
- FIRE HYDRANT

EXISTING WATER DISTRIBUTION SYSTEM
SCALE 1" = 400'

- ADD-ON SHEET**
1. CHANGE PIPE APPROXIMATE
 2. CHANGE PIPE APPROXIMATE
 3. CHANGE PIPE APPROXIMATE
 4. CHANGE PIPE APPROXIMATE
 5. CHANGE PIPE APPROXIMATE
 6. CHANGE PIPE APPROXIMATE
 7. CHANGE PIPE APPROXIMATE
 8. CHANGE PIPE APPROXIMATE
 9. CHANGE PIPE APPROXIMATE
 10. CHANGE PIPE APPROXIMATE
 11. CHANGE PIPE APPROXIMATE
 12. CHANGE PIPE APPROXIMATE
 13. CHANGE PIPE APPROXIMATE
 14. CHANGE PIPE APPROXIMATE
 15. CHANGE PIPE APPROXIMATE
 16. CHANGE PIPE APPROXIMATE
 17. CHANGE PIPE APPROXIMATE
 18. CHANGE PIPE APPROXIMATE
 19. CHANGE PIPE APPROXIMATE
 20. CHANGE PIPE APPROXIMATE
 21. CHANGE PIPE APPROXIMATE
 22. CHANGE PIPE APPROXIMATE
 23. CHANGE PIPE APPROXIMATE
 24. CHANGE PIPE APPROXIMATE
 25. CHANGE PIPE APPROXIMATE
 26. CHANGE PIPE APPROXIMATE
 27. CHANGE PIPE APPROXIMATE
 28. CHANGE PIPE APPROXIMATE
 29. CHANGE PIPE APPROXIMATE
 30. CHANGE PIPE APPROXIMATE
 31. CHANGE PIPE APPROXIMATE
 32. CHANGE PIPE APPROXIMATE
 33. CHANGE PIPE APPROXIMATE
 34. CHANGE PIPE APPROXIMATE
 35. CHANGE PIPE APPROXIMATE

RECEIVED
AUG 14 2008
WATER RESOURCES DEPT.
SALEM, OREGON

Fairview Water District
Tillamook, OR

FAIRVIEW WATER DISTRICT
WATER SYSTEM ANALYSIS
Tillamook County, Oregon

Water Distribution Map

Master Plan
January, 2001

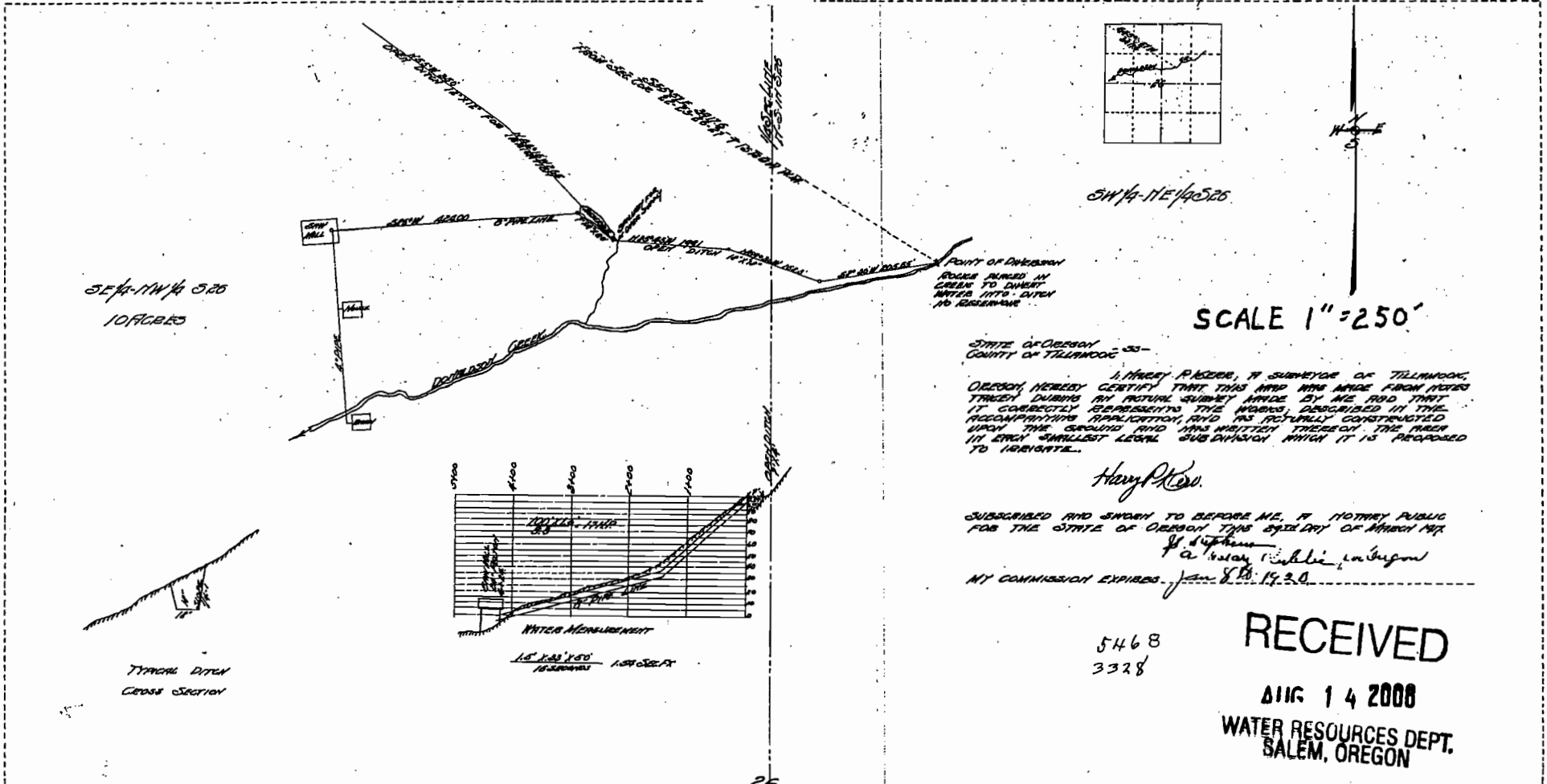
Design Group
Klein Consulting Engineers Inc.
2300 N.W. 55TH AVENUE
HELSINKI, OREGON 97124
PHONE: (503) 889-4242
FAX: (503) 845-0900
www.klein-engineers.com

3-9920
1

FROM POINT OF DIVERSION

G.E. DONALDSON
 WATER RIGHT
 S26-T15R0W-WM
 TILLAMOOK CO. OREG.

Certified Water Right Examiner
 377 WRE
Terry L. Jones
 Terry L. Jones
 May 11, 1994
 STATE OF OREGON
 6-30-09



STATE OF OREGON - 35 -
 COUNTY OF TILLAMOOK
 I, HARRY P. BERRY, A SURVEYOR OF TILLAMOOK, OREGON, HEREBY CERTIFY THAT THIS MAP WAS MADE FROM NOTES TAKEN DURING MY PERSONAL SURVEY MADE BY ME AND THAT IT CORRECTLY REPRESENTS THE MARKS DESCRIBED IN THE ACCOMPANYING APPLICATION, AND AS ACTUALLY COORDINATED UPON THE GROUND AND HAS WRITTEN THEREON THE AREA IN EACH SMALLEST LEGAL SUBDIVISION WHICH IT IS PROPOSED TO LOCATE.

Harry P. Berry

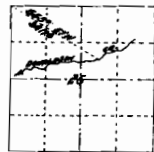
SUBSCRIBED AND SWORN TO BEFORE ME, A NOTARY PUBLIC FOR THE STATE OF OREGON THIS 8th DAY OF MARCH 1994.
[Signature]
 MY COMMISSION EXPIRES - Jan. 8, 1995.

5468
 3328

RECEIVED

MAY 14 2008
 WATER RESOURCES DEPT.
 SALEM, OREGON

G.E. DONALDSON
WATER RIGHT
526-TISBROW WM
TILLAMOOK CO. OREG.
1"=100'



SW 1/4 - NE 1/4 526



STATE OF OREGON - 53 -
 COUNTY OF TILLAMOOK

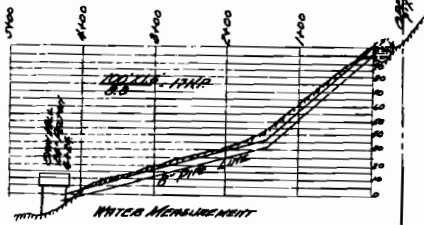
I, HARVEY FISHER, A SURVEYOR OF TILLAMOOK, OREGON, HEREBY CERTIFY THAT THIS MAP WAS MADE FROM NOTES TAKEN DURING MY PERSONAL SURVEY MADE BY ME AND THAT IT CORRECTLY REPRESENTS THE WORKS, DESCRIBED IN THE ACCOMPANYING APPLICATION, AND AS ACTUALLY CONSTRUCTED UPON THE GROUND AND WAS ADOPTED THEREON THE FIRST IN EACH SMALLEST LEGAL SUBDIVISION WHICH IT IS PROPOSED TO IRRIGATE.

Harvey Fisher

SUBSCRIBED AND SWORN TO BEFORE ME, A NOTARY PUBLIC FOR THE STATE OF OREGON THIS 27th DAY OF MARCH 1917.

J. A. Fisher
 J. A. Fisher, Notary Public, in Oregon

MY COMMISSION EXPIRES Jan 8th 1920.



DITCH MEASUREMENT
 15' x 1.5' x 1.5'
 1636000000

SE 1/4 - NW 1/4 526
 10 ACRES

RECEIVED

AUG 14 2008

WATER RESOURCES DEPT.
 SALEM, OREGON

TYPICAL DITCH
 CROSS SECTION

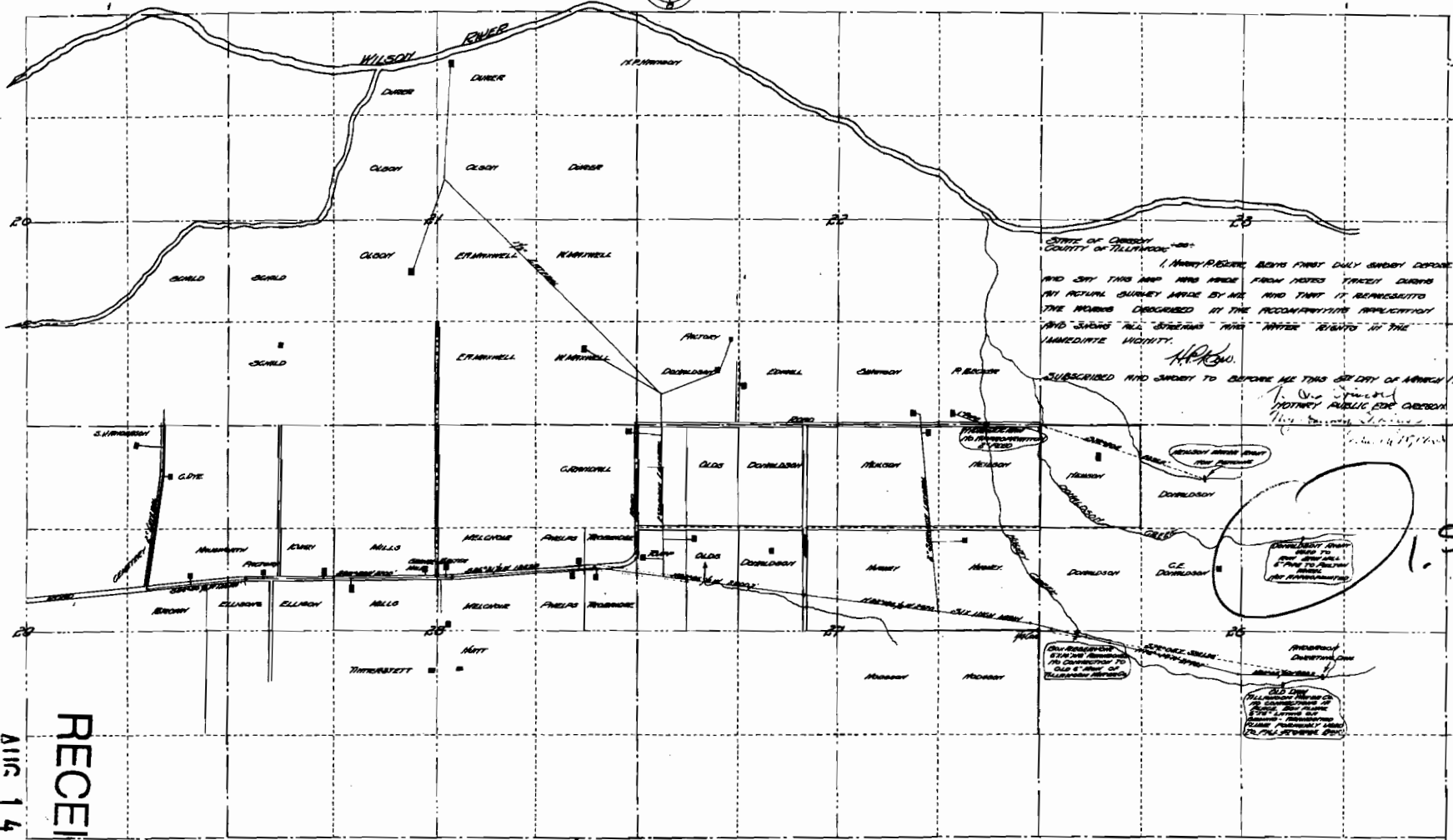
5468
 3328

S. ANDERSON
 WATER - RIGHT
 526 TLE R. 9W 4N
 TILLAMOOK CO OREGON

SCALE
 1" = 500'



N. ANDERSON
 TILLAMOOK CO OREGON



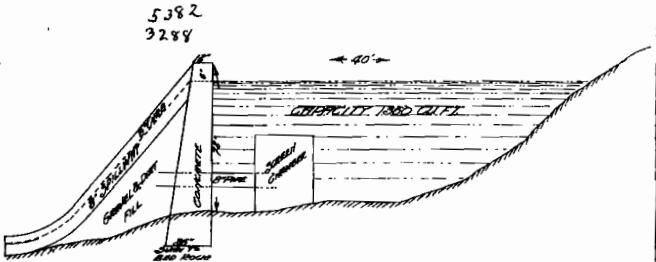
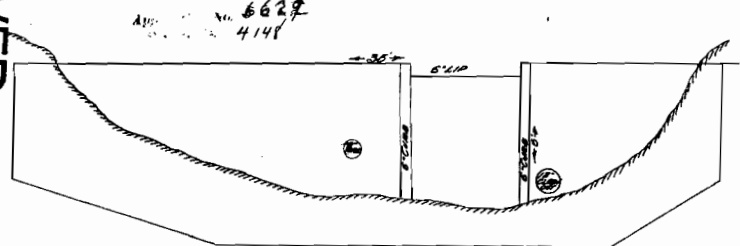
STATE OF OREGON - ss:
 COUNTY OF TILLAMOOK - ss:
 I, NANCY P. BROWN, BEING FIRST DAILY SUNDAY BEFORE
 AND SAY THIS MAP WAS MADE FROM NOTES TAKEN DURING
 MY ACTUAL SURVEY MADE BY ME AND THAT IT REPRESENTS
 THE WORKS DESCRIBED IN THE RECOMMENDING APPLICATION
 AND SHOWS ALL STREAMS AND WATER RIGHTS IN THE
 IMMEDIATE VICINITY.

SUBSCRIBED AND SWORN TO BEFORE ME THIS 5TH DAY OF MARCH 1917
 My Comm. Expires 1st July 1917
 NANCY P. BROWN
 Notary Public for Oregon

RECEIVED

AUG 14 2008

WATER RESOURCES DEPT.
 SALEM, OREGON



DATE	R	CALCULATED DIST.
1910		347.00
1911		347.00
1912		347.00
1913		347.00
1914		347.00
1915		347.00
1916		347.00
1917		347.00
1918		347.00
1919		347.00
1920		347.00
1921		347.00
1922		347.00
1923		347.00
1924		347.00
1925		347.00
1926		347.00
1927		347.00
1928		347.00
1929		347.00
1930		347.00
1931		347.00
1932		347.00
1933		347.00
1934		347.00
1935		347.00
1936		347.00
1937		347.00
1938		347.00
1939		347.00
1940		347.00
1941		347.00
1942		347.00
1943		347.00
1944		347.00
1945		347.00
1946		347.00
1947		347.00
1948		347.00
1949		347.00
1950		347.00
1951		347.00
1952		347.00
1953		347.00
1954		347.00
1955		347.00
1956		347.00
1957		347.00
1958		347.00
1959		347.00
1960		347.00
1961		347.00
1962		347.00
1963		347.00
1964		347.00
1965		347.00
1966		347.00
1967		347.00
1968		347.00
1969		347.00
1970		347.00
1971		347.00
1972		347.00
1973		347.00
1974		347.00
1975		347.00
1976		347.00
1977		347.00
1978		347.00
1979		347.00
1980		347.00
1981		347.00
1982		347.00
1983		347.00
1984		347.00
1985		347.00
1986		347.00
1987		347.00
1988		347.00
1989		347.00
1990		347.00
1991		347.00
1992		347.00
1993		347.00
1994		347.00
1995		347.00
1996		347.00
1997		347.00
1998		347.00
1999		347.00
2000		347.00
2001		347.00
2002		347.00
2003		347.00
2004		347.00
2005		347.00
2006		347.00
2007		347.00
2008		347.00
2009		347.00
2010		347.00
2011		347.00
2012		347.00
2013		347.00
2014		347.00
2015		347.00
2016		347.00
2017		347.00
2018		347.00
2019		347.00
2020		347.00
2021		347.00
2022		347.00
2023		347.00
2024		347.00
2025		347.00
2026		347.00
2027		347.00
2028		347.00
2029		347.00
2030		347.00
2031		347.00
2032		347.00
2033		347.00
2034		347.00
2035		347.00
2036		347.00
2037		347.00
2038		347.00
2039		347.00
2040		347.00
2041		347.00
2042		347.00
2043		347.00
2044		347.00
2045		347.00
2046		347.00
2047		347.00
2048		347.00
2049		347.00
2050		347.00
2051		347.00
2052		347.00
2053		347.00
2054		347.00
2055		347.00
2056		347.00
2057		347.00
2058		347.00
2059		347.00
2060		347.00
2061		347.00
2062		347.00
2063		347.00
2064		347.00
2065		347.00
2066		347.00
2067		347.00
2068		347.00
2069		347.00
2070		347.00
2071		347.00
2072		347.00
2073		347.00
2074		347.00
2075		347.00
2076		347.00
2077		347.00
2078		347.00
2079		347.00
2080		347.00
2081		347.00
2082		347.00
2083		347.00
2084		347.00
2085		347.00
2086		347.00
2087		347.00
2088		347.00
2089		347.00
2090		347.00
2091		347.00
2092		347.00
2093		347.00
2094		347.00
2095		347.00
2096		347.00
2097		347.00
2098		347.00
2099		347.00
2100		347.00

TOTAL FLOW 2784' AT TOWNSEND.