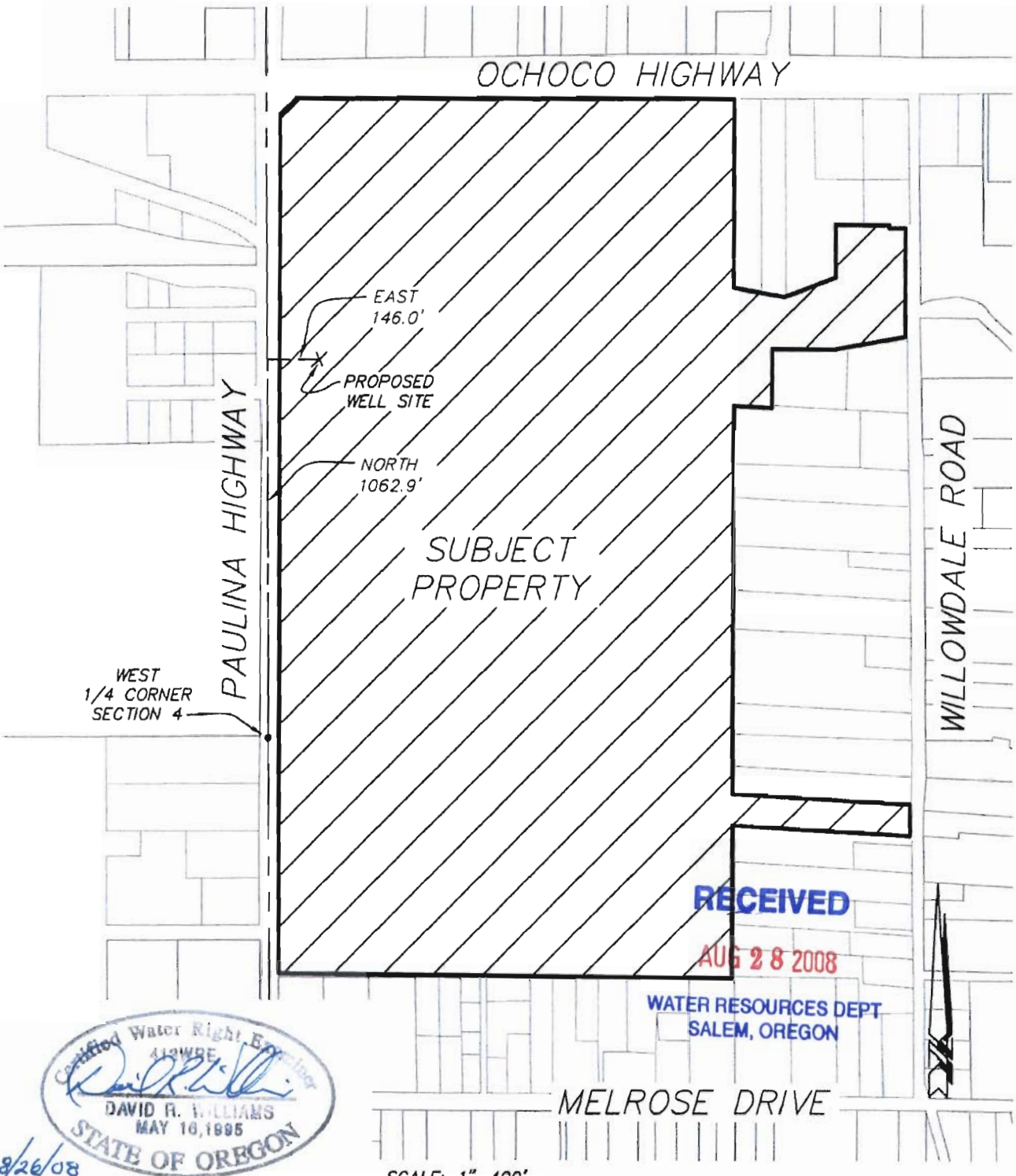


# OCHOCO MILL


LOCATED IN THE W1/2 OF SECTION 4, TOWNSHIP 15 SOUTH, RANGE 16 EAST, W.M.,  
CROOK COUNTY, OREGON



RECEIVED  
AUG 28 2008

WATER RESOURCES DEPT  
SALEM, OREGON

SCALE: 1"=400'

 **BUSSARD WILLIAMS**  
DEVELOPMENT CONSULTANTS  
698 NW YORK DRIVE  
BEND, OREGON 97701  
PHONE: (541) 348-9351

OCHOCO LUMBER COMPANY	
PROPOSED WELL LOCATION BASE MAP	
SCALE: 1"=400'	DRAWN BY: DRW
DATE: 08/25/08	

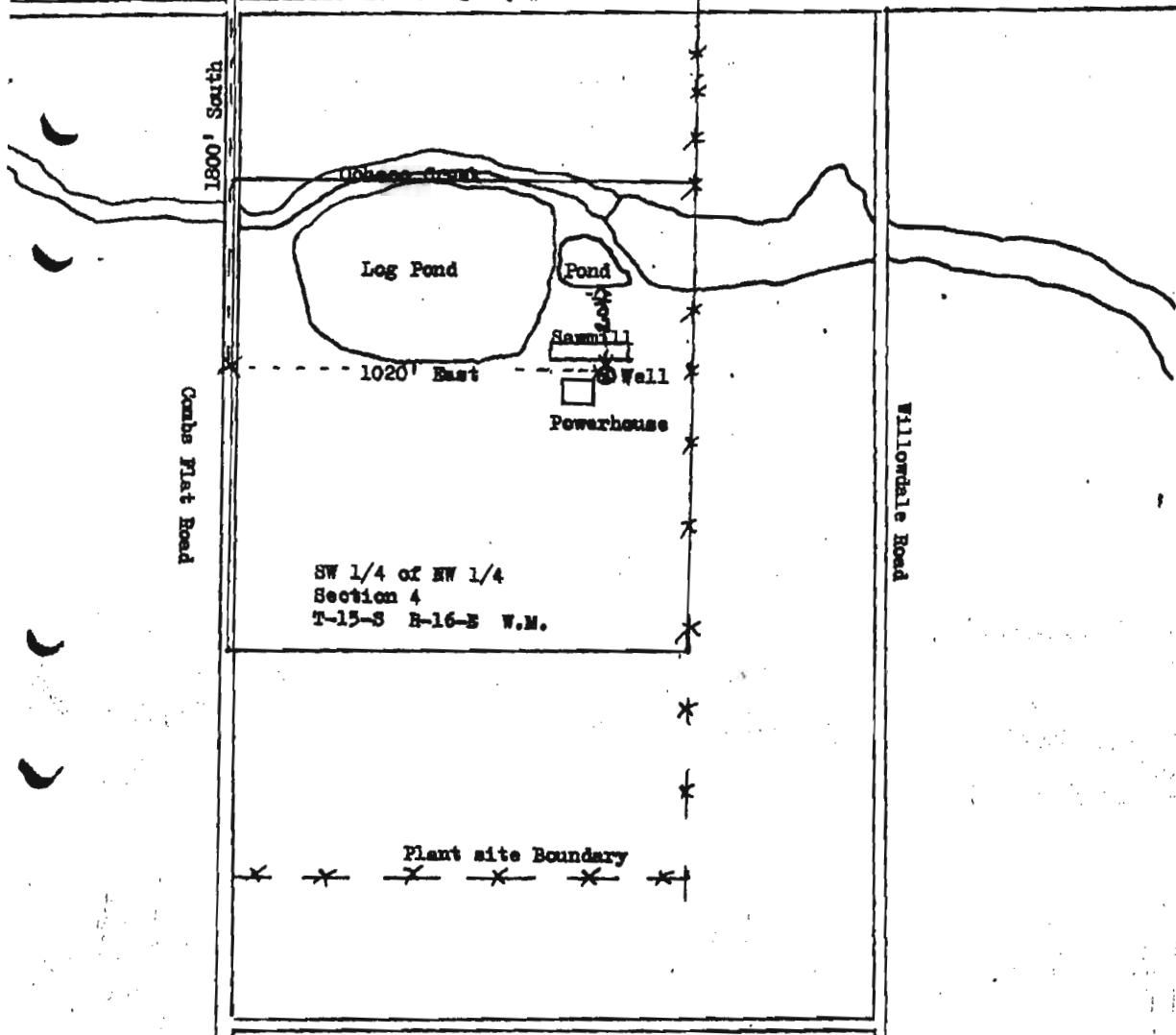
SHEET  
1/1

N.W. Corner of Sec. 4 T-15-S R-16-E W.M.

Ochoco Lumber Company  
Prineville, Oregon  
Scale 1 inch = 400 Feet

Highway #26

45481 S  
**RECEIVED**  
MAY 12 1972  
STATE ENGINEER  
SALEM, OREGON  
**RECEIVED**  
JUN 7 1972  
STATE ENGINEER  
SALEM, OREGON



1800' South  
Combs Flat Road

Ochoco Creek

Log Pond

Pond

Sawmill

Well

Powerhouse

1020' East

SW 1/4 of NW 1/4  
Section 4  
T-15-S R-16-E W.M.

Willowdale Road

Plant site Boundary

Melrose Drive

Application No. G-5792  
Permit No. G-4986

**RECEIVED**

AUG 28 2008

WATER RESOURCES DEPT  
SALEM, OREGON

OCHOCO LUMBER COMPANY MILL SITE  
SEPTEMBER, 2005 (NAIP 2005 PHOTO)



RECEIVED

AUG 28 2008

500 250 0 500 Feet

WATER RESOURCES DEPT  
SALEM, OREGON