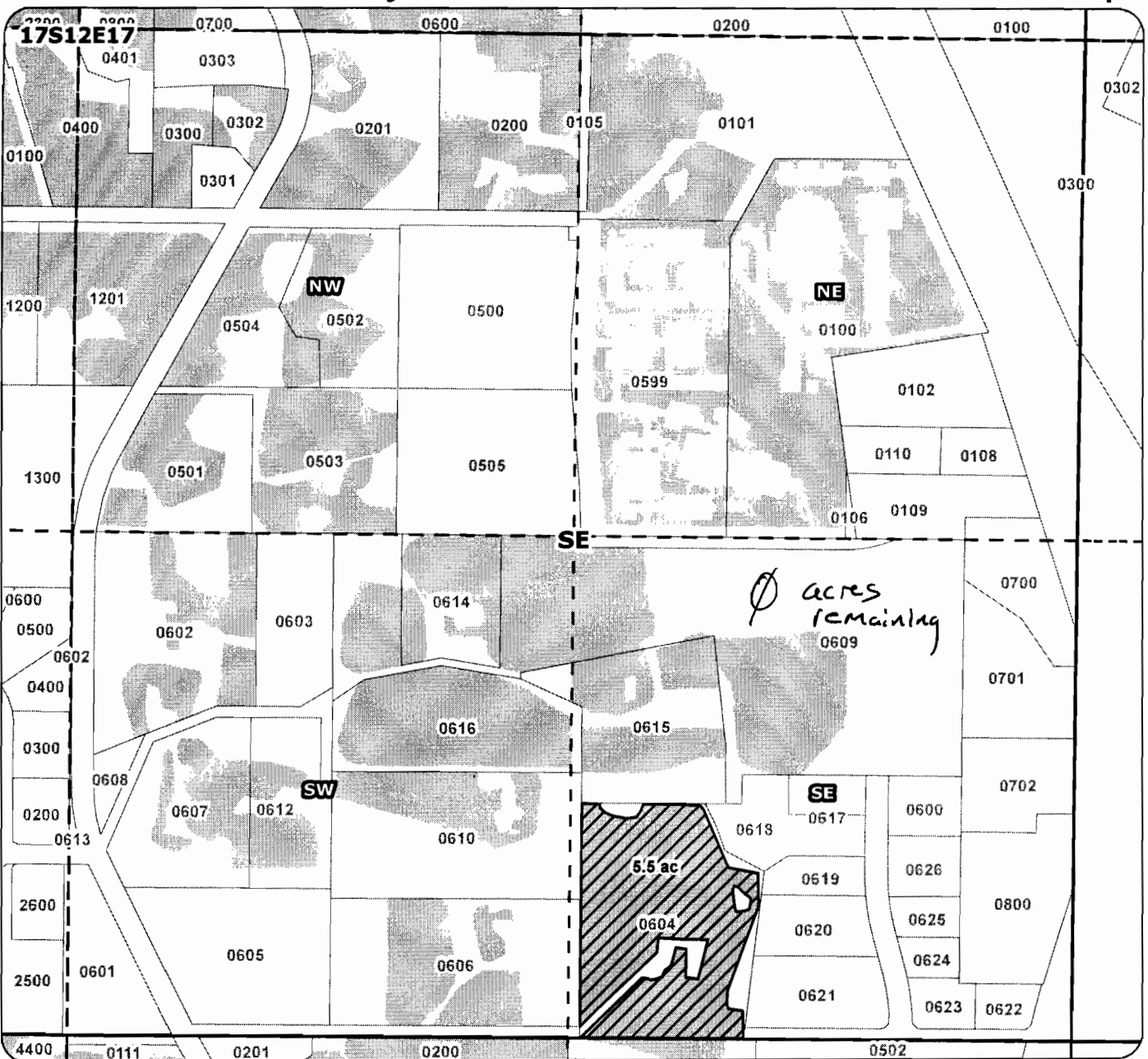


Halfway

# 2008 Swalley Irrigation District and Deschutes River Conservancy Permanent Instream Transfer Map



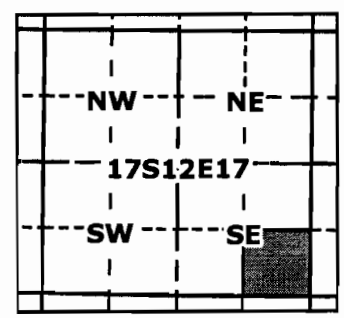
## Application for Permanent Instream Transfer

**RECEIVED**

SEP 29 2008

WATER RESOURCES DEPT  
SALEM, OREGON

for  
Swalley Irrigation District  
taxlot 604  
5.5 acres  
in 171217SESE



T 10713

Proposed Transfer of Irrigation Rights

Water Rights

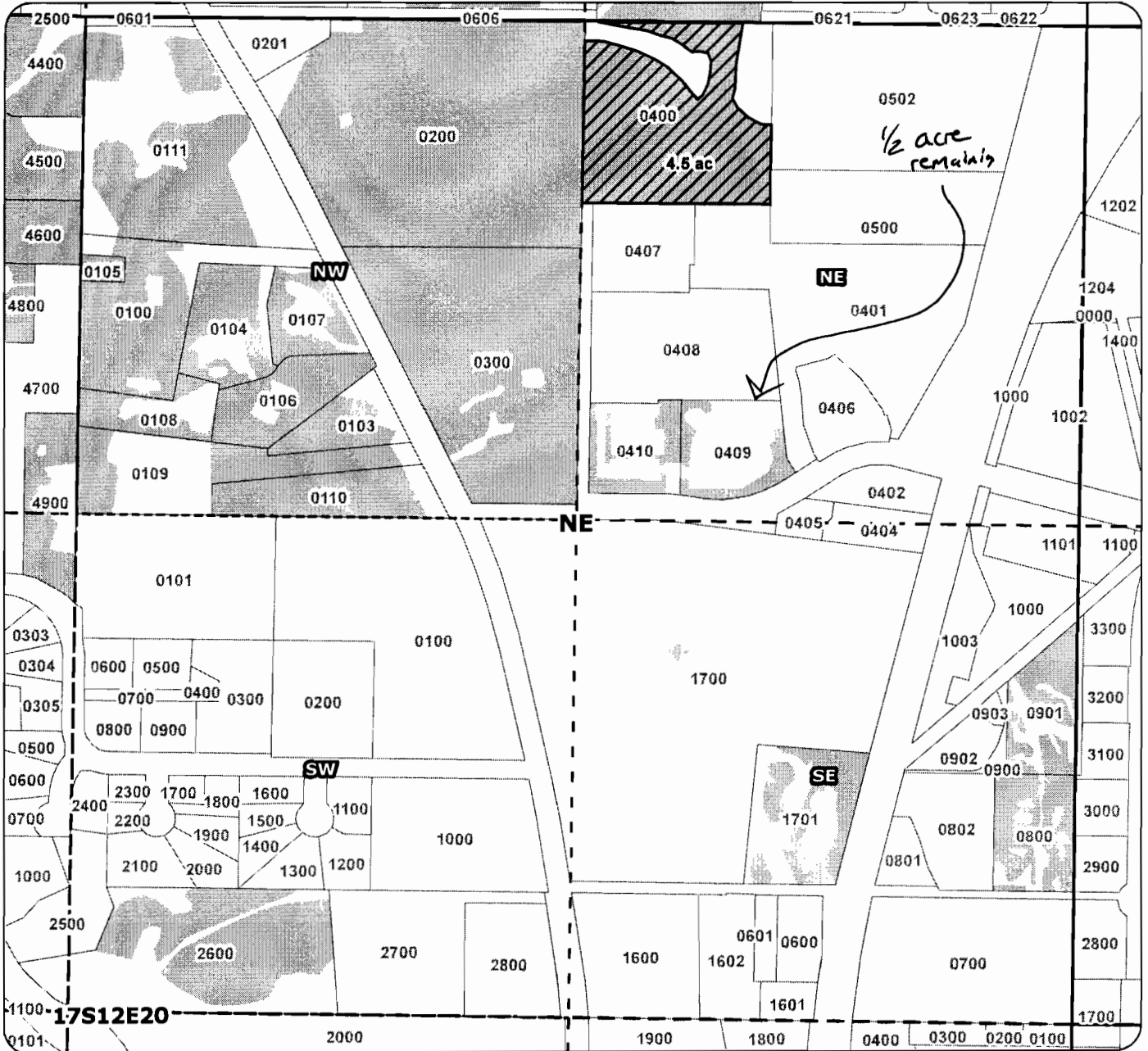
Geo-Spatial Solutions, Inc.  
[www.geospatialolutions.com](http://www.geospatialolutions.com)

Date Created: April 2008



1 inch equals 400 feet

# 2008 Swalley Irrigation District and Deschutes River Conservancy Permanent Instream Transfer Map



## Application for Permanent Instream Transfer

**RECEIVED**

SEP 29 2008

WATER RESOURCES DEPT  
SALEM, OREGON



Geo-Spatial Solutions, Inc.

www.geospatialsolutions.com

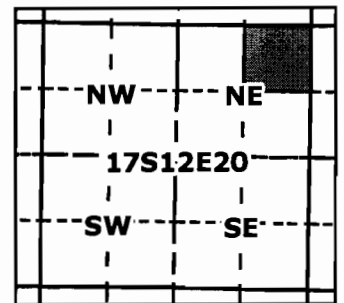
for  
Swalley Irrigation District  
taxlot 400  
4.5 acres  
in 171220NENE



Proposed Transfer of Irrigation Rights



Water Rights



1 inch equals 400 feet

Date Created: April 2008

T 10713