

SECTION PLAT

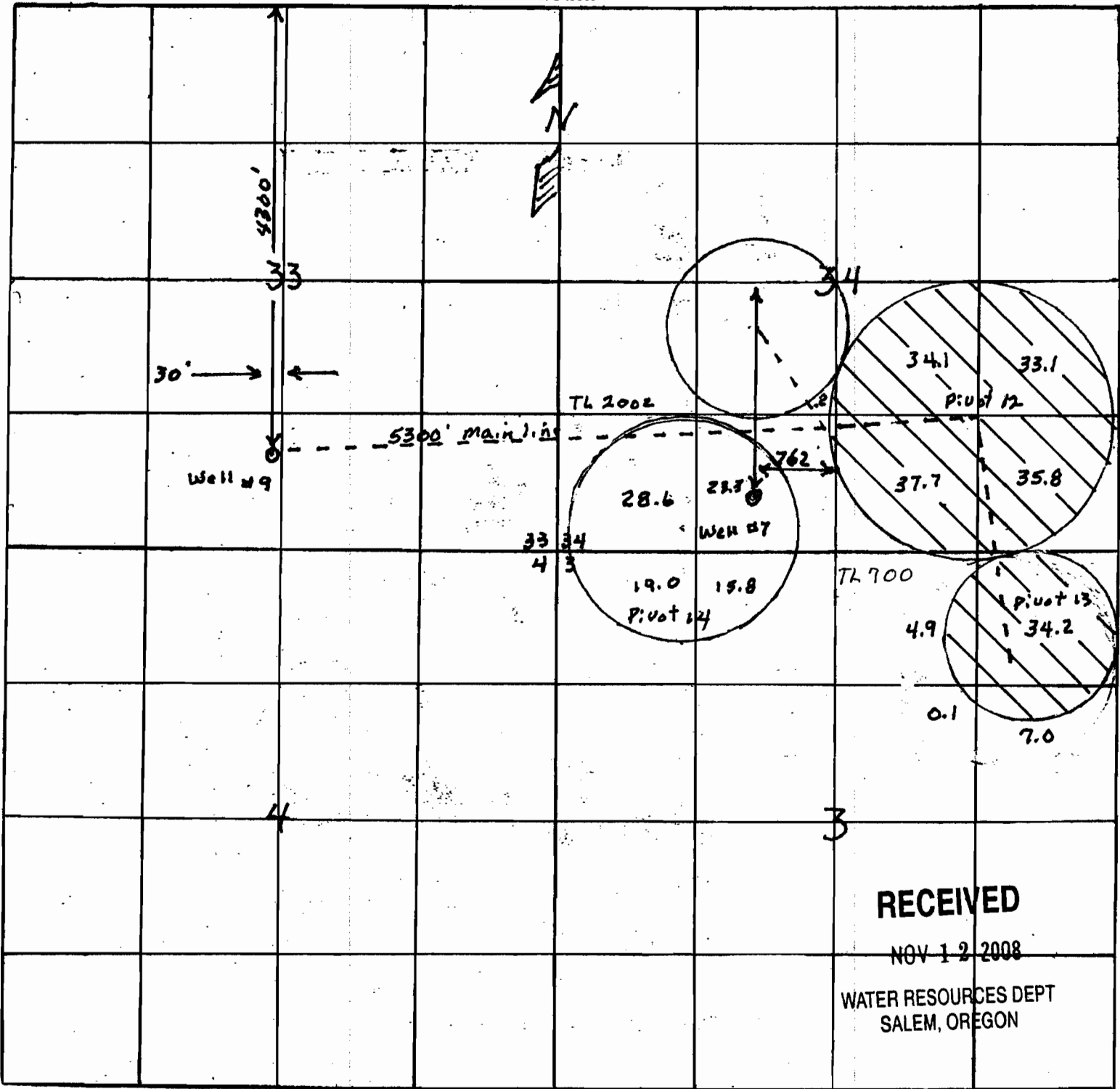
Section 34

Township 25-S

Range 30-E

County of Harney State of OR

NORTH



RECEIVED

NOV 12 2008

WATER RESOURCES DEPT
SALEM, OREGON

Remarks scale - 8" = 1 mile - 660'. Well #9 will replace well #7 to irrigate
Pivots #12 and #13

T 10723

Transfer POA