

This map was prepared for Assessment purposes only.



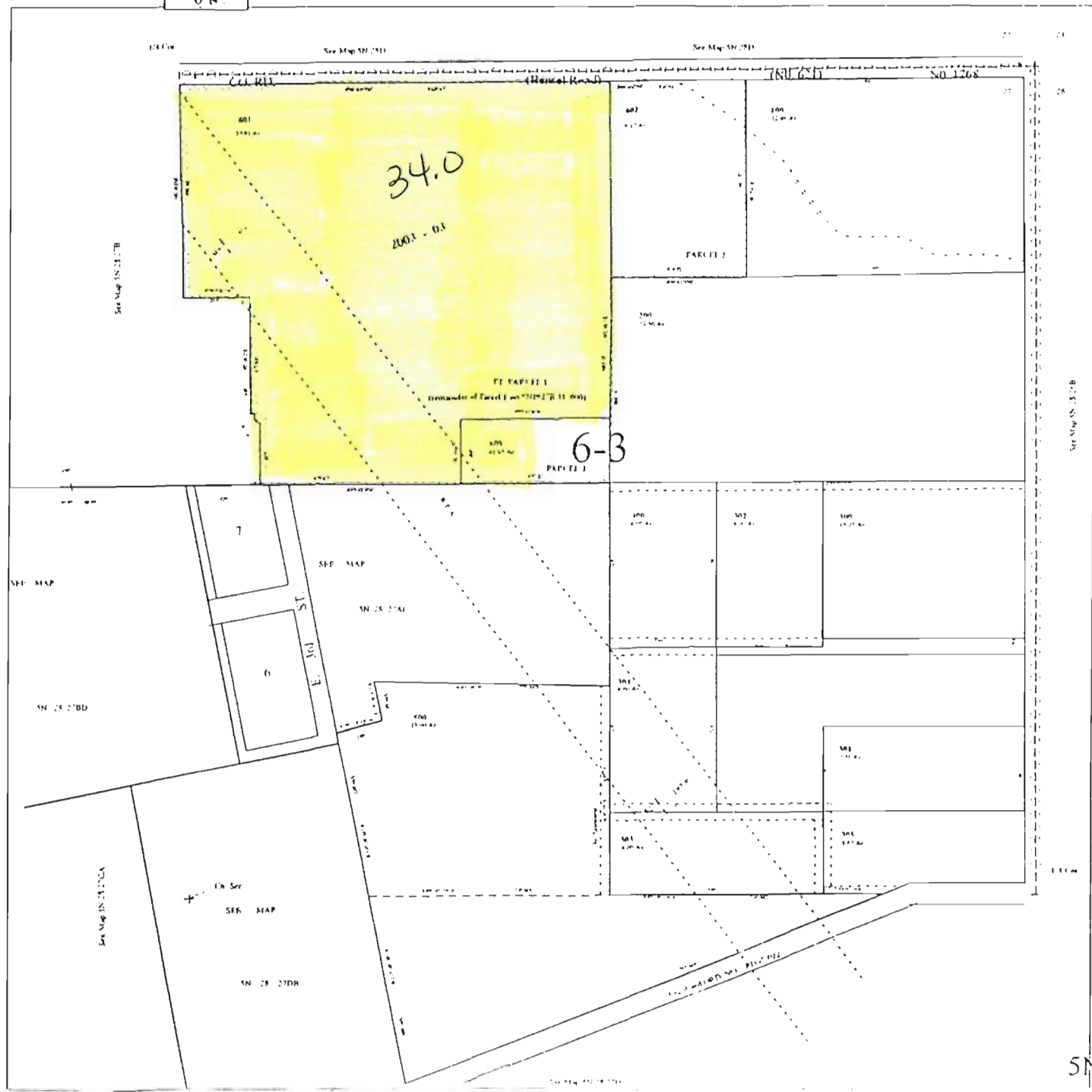
NE 1/4 SEC 27 T. R28E WM
UMATILLA COUNTY, OR
SCALE: 1" = 200'

5N2827A601

From

2/1/201

T 10724



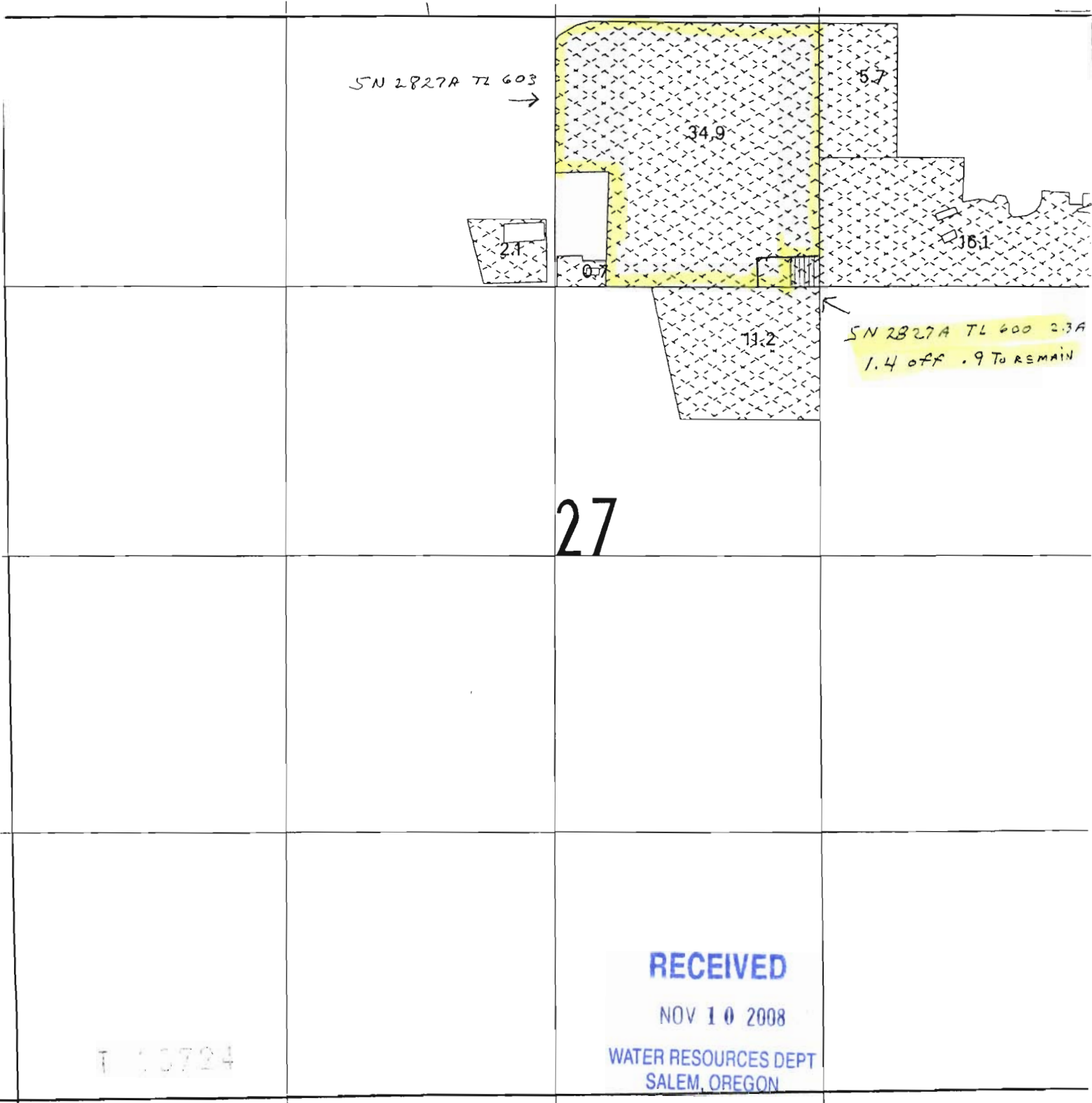
RECEIVED

NOV 10 2008

WATER RESOURCES DEPT
SALEM, OREGON

5N2827A

TOWNSHIP 5 N., RANGE 28 E., W.M.



SN 2827A TL 603
→

2.1
0.7

27

34.9

5.7

16.1

11.2

SN 2827A TL 600 2.3A
1.4 off .9 TO REMAIN

RECEIVED

NOV 10 2008

WATER RESOURCES DEPT
SALEM, OREGON

T 13724

SCALE 1 inch = 660 feet



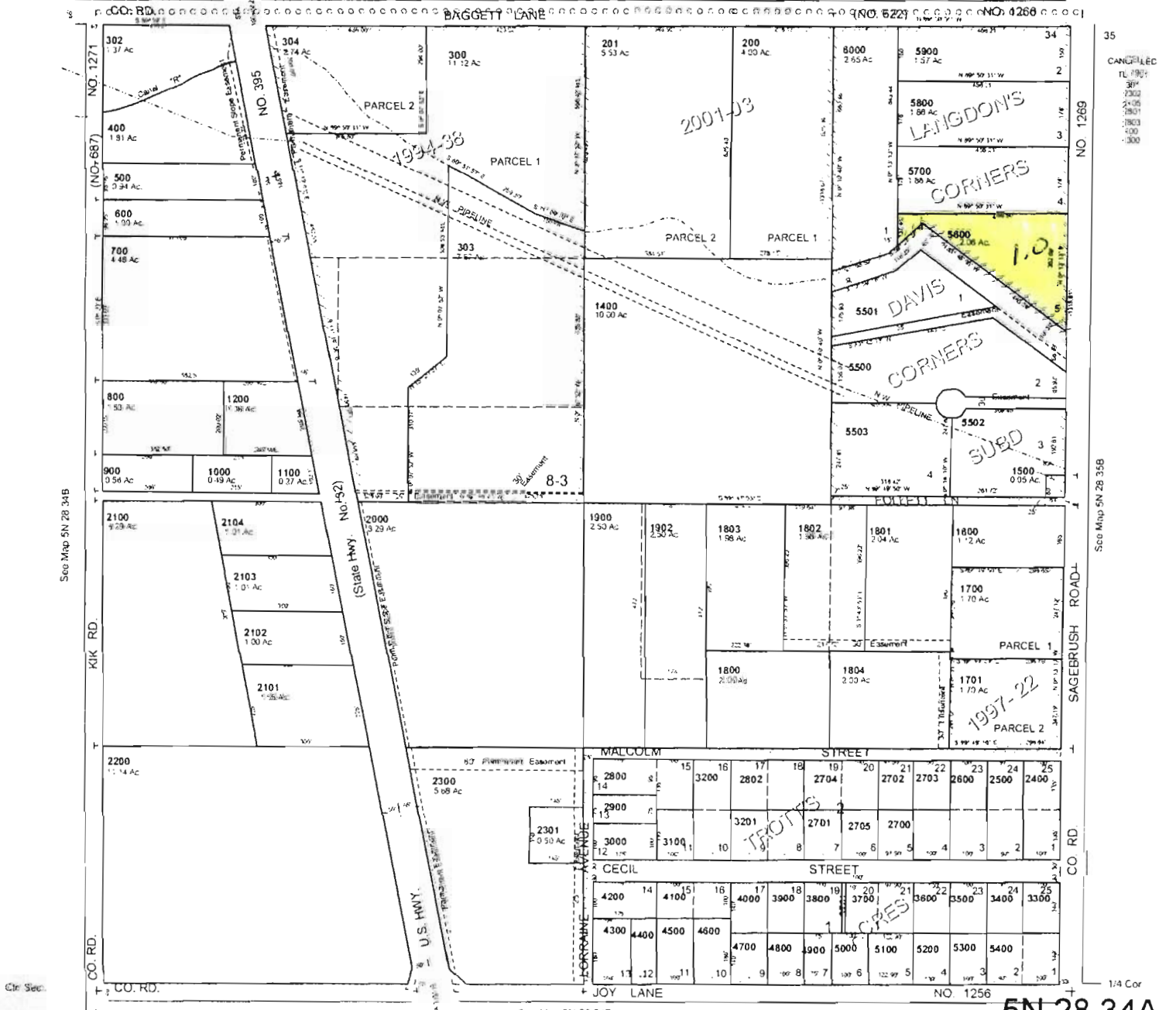
NE 1/4 SEC 34 T5N R28E WM
 UMATILLA COUNTY
 SCALE 1"=100'

10

5N 28 34A

AERIAL PHOTO NO. NZ 1P-104

1/4 Cor. See Map 5N 28 27CD See Map 5N 28 27CD See Map 5N 28 27D 27 26



CANCELLED
 TL 1901
 301
 2002
 2405
 2801
 1803
 100
 300

See Map 5N 28 35B

City Sec.

1/4 Cor.

See Map 5N 28 34D

5N 28 34A

RECEIVED

NOV 10 2008

WATER RESOURCES DEPT
 SALEM, OREGON

3724

NE1/4 SEC 34 T5N R28E WM
 UMATILLA COUNTY
 SCALE 1"=100'

5N 28 34A

AERIAL PHOTO NO. NZ 1P-104

TO

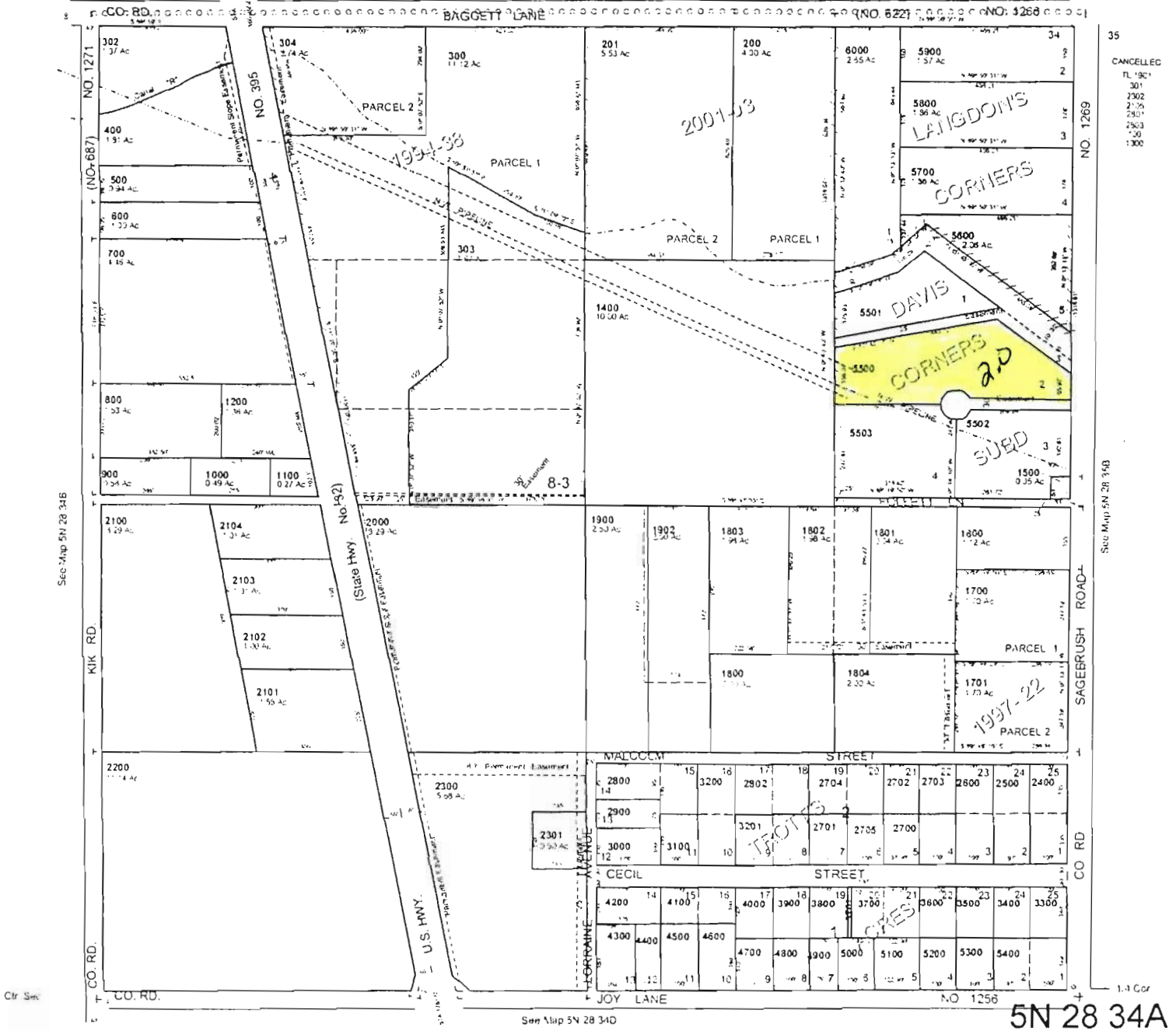
1/4 Cor. See Map 5N 28 27CD

See Map 5N 28 27CD

See Map 5N 28 27D

27

28



RECEIVED

NOV 10 2008

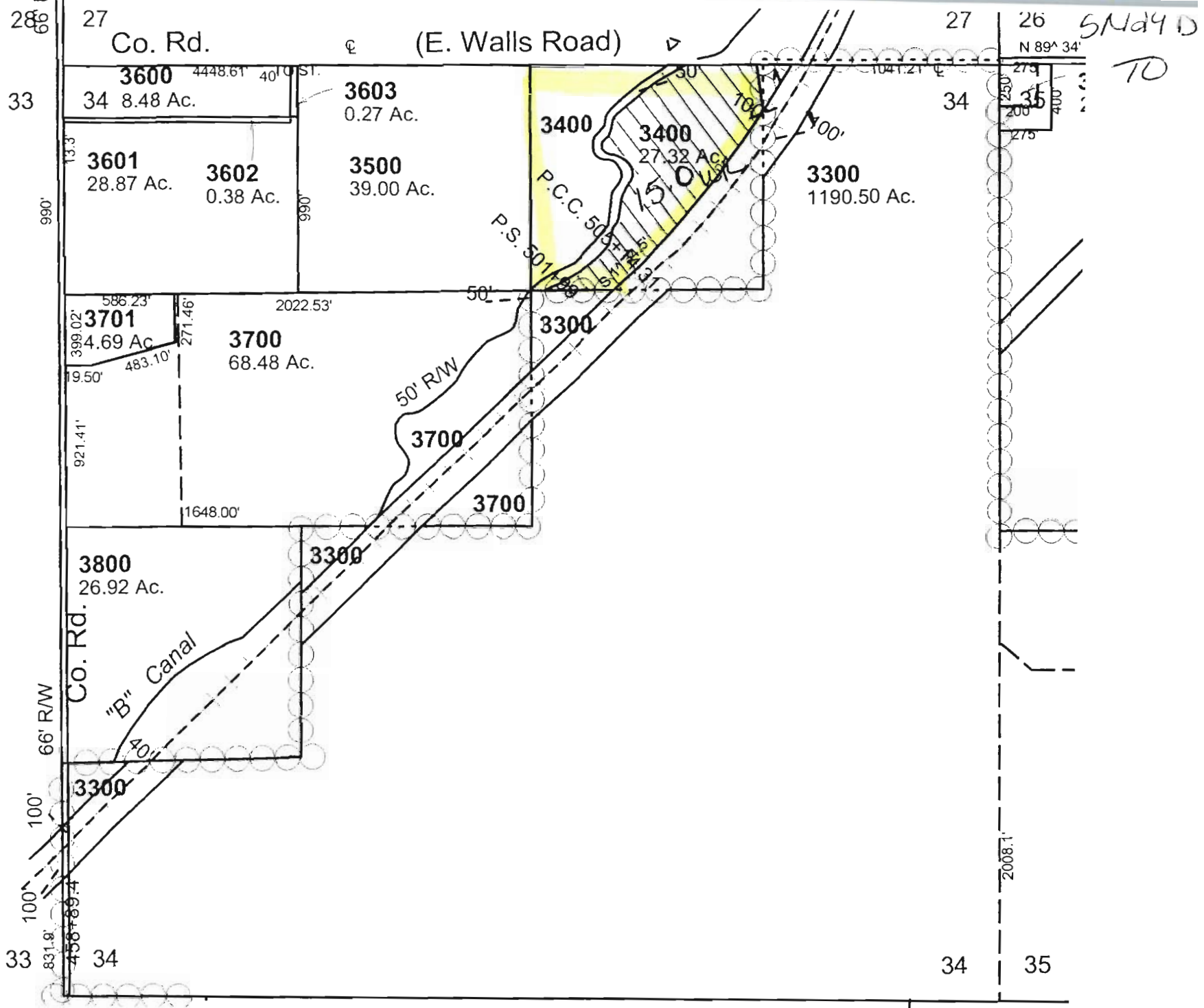
WATER RESOURCES DEPT
 SALEM, OREGON

T 10724

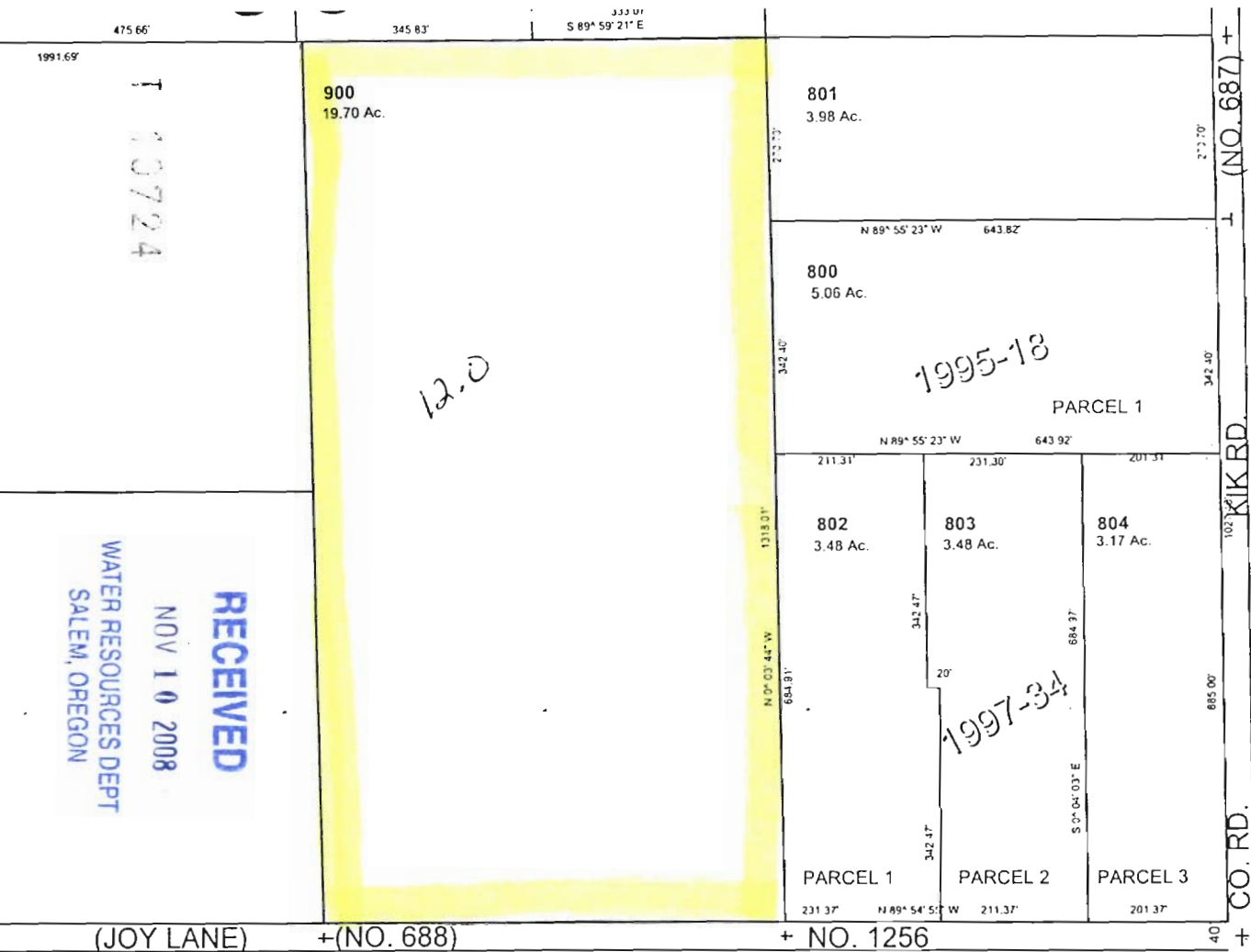
110724

RECEIVED
NOV 10 2008
WATER RESOURCES DEPT
SALEM, OREGON

See Map 5N 29 33



TO 4N2834B 900



RECEIVED
 NOV 10 2008
 WATER RESOURCES DEPT
 SALEM, OREGON

10724

1995-18

1997-34

12.0

Ctr. Sec.

PARTITION PLAT 2007-

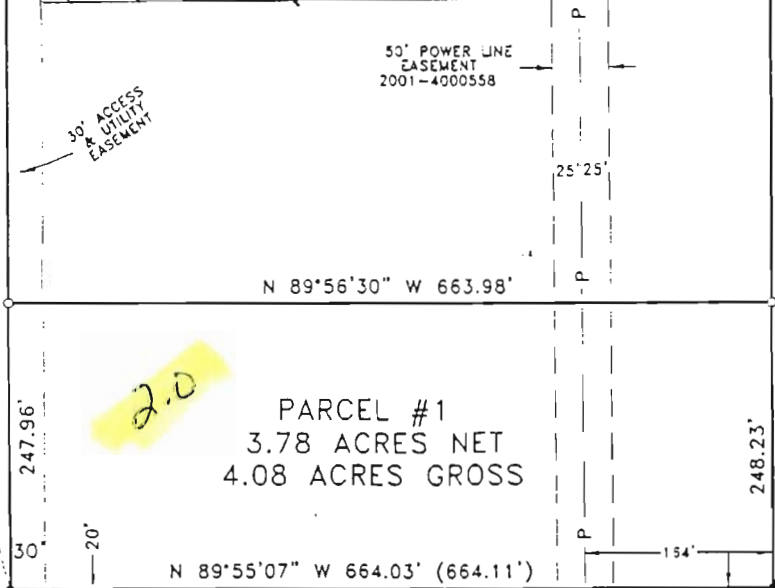
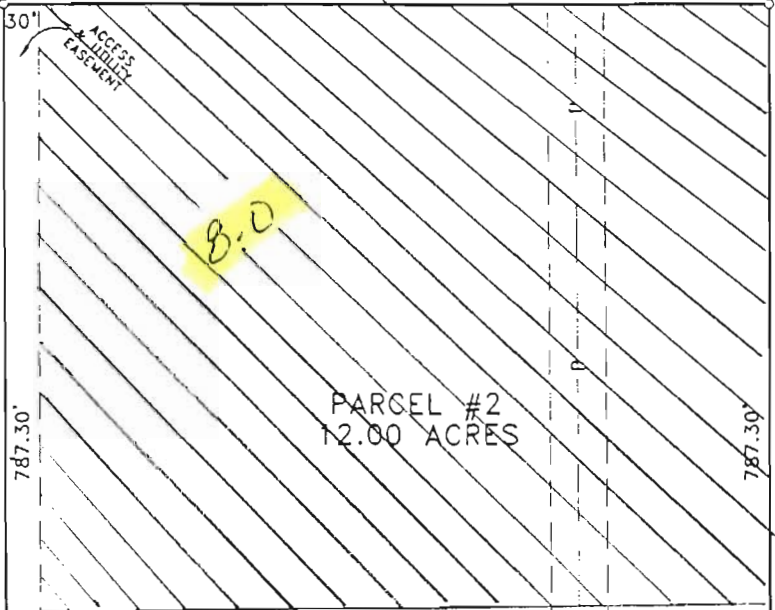
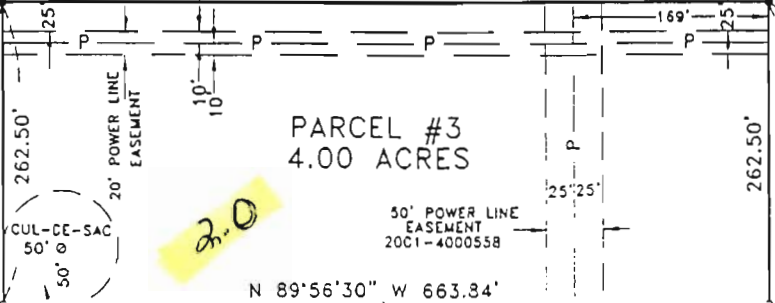
IN SE 1/4 OF NW 1/4, SEC. 34, T 5 N, R 28 E, W.M, UMATILLA COUNTY, OREGON #LD-5N-721-07

NW COR. W 1/2 SE 1/4 NW 1/4 SEC. 34

NE COR. W 1/2 SE 1/4 NW 1/4 SEC. 34

FND. 1/2" IRON P. SET BY ME IN REV. SURVEY FOR UNIVER

N 89°56'30" W 663.79' (663.92')



BEARING BASE MY 1993 SURVEY FOR LIND
N 0°03'14" W 1297.76' (1297.77')

N 0°03'52" W 1298.03' (1298.01')

SUNSHINE LANE

JOY LANE (CO. RD. #1256)

RECEIVED

NOV 10 2008

WATER RESOURCES DEPT
SALEM, OREGON

FND. 5/8" IRON P. SET BY ME IN REV. SURVEY FOR UNIVER

APP
UMA
APPRO
UMAT
UMA
APPR
UMAT
UMAT
TAXES
APPR
UMAT

S

I 10724

This map was prepared for assessment purposes only.



NW 14/ SEC 34 T 1 N R 28E WM UMATILLA COUNTY, OR

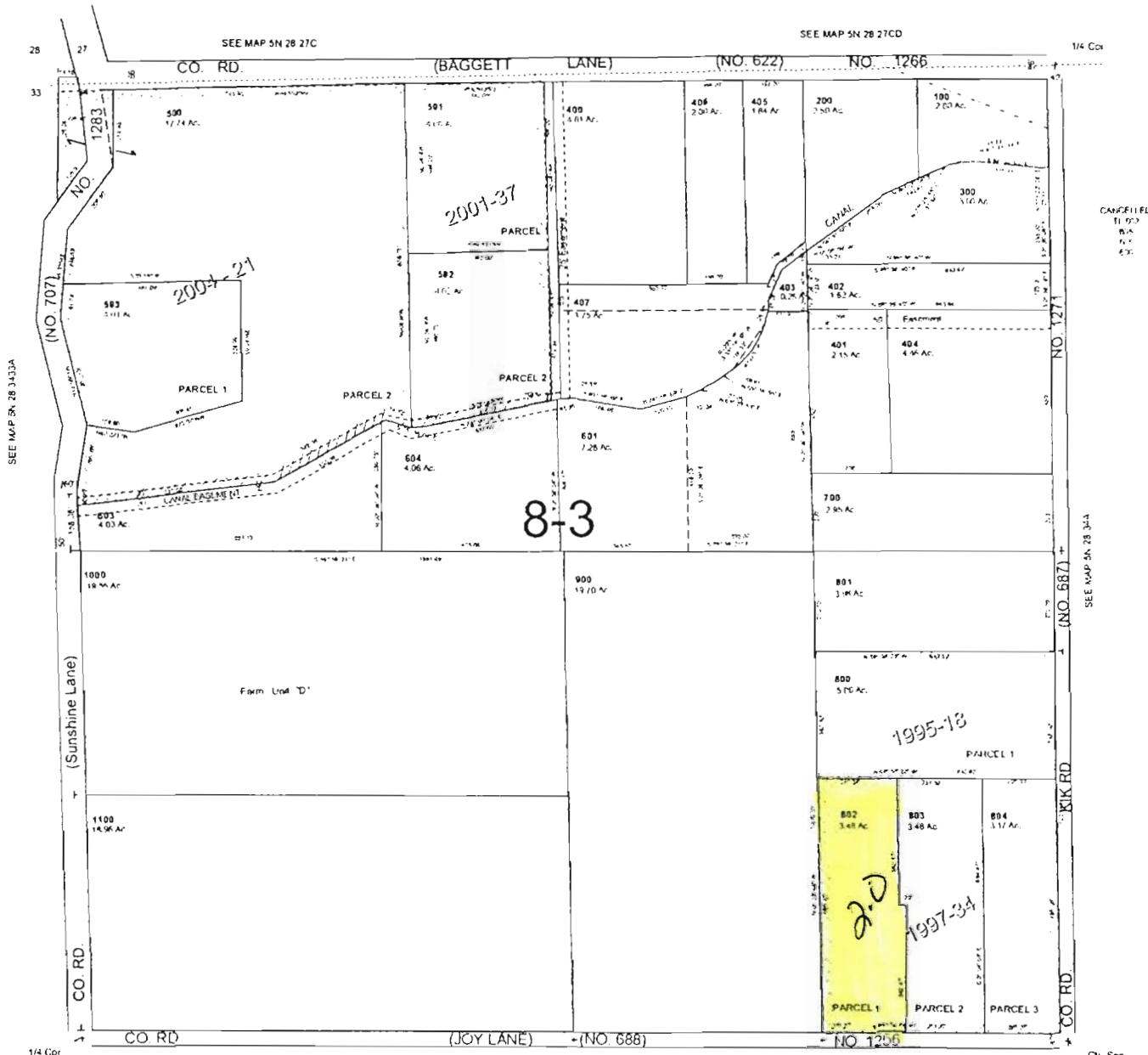
SCALE: 1" = 200'

4/24/03

TO

5N2834B

AERIAL PHOTO NO. NZ-1P-104



RECEIVED
NOV 10 2008
WATER RESOURCES DEPT
SALEM, OREGON

5N2834B

This map was prepared for assessment purposes only.



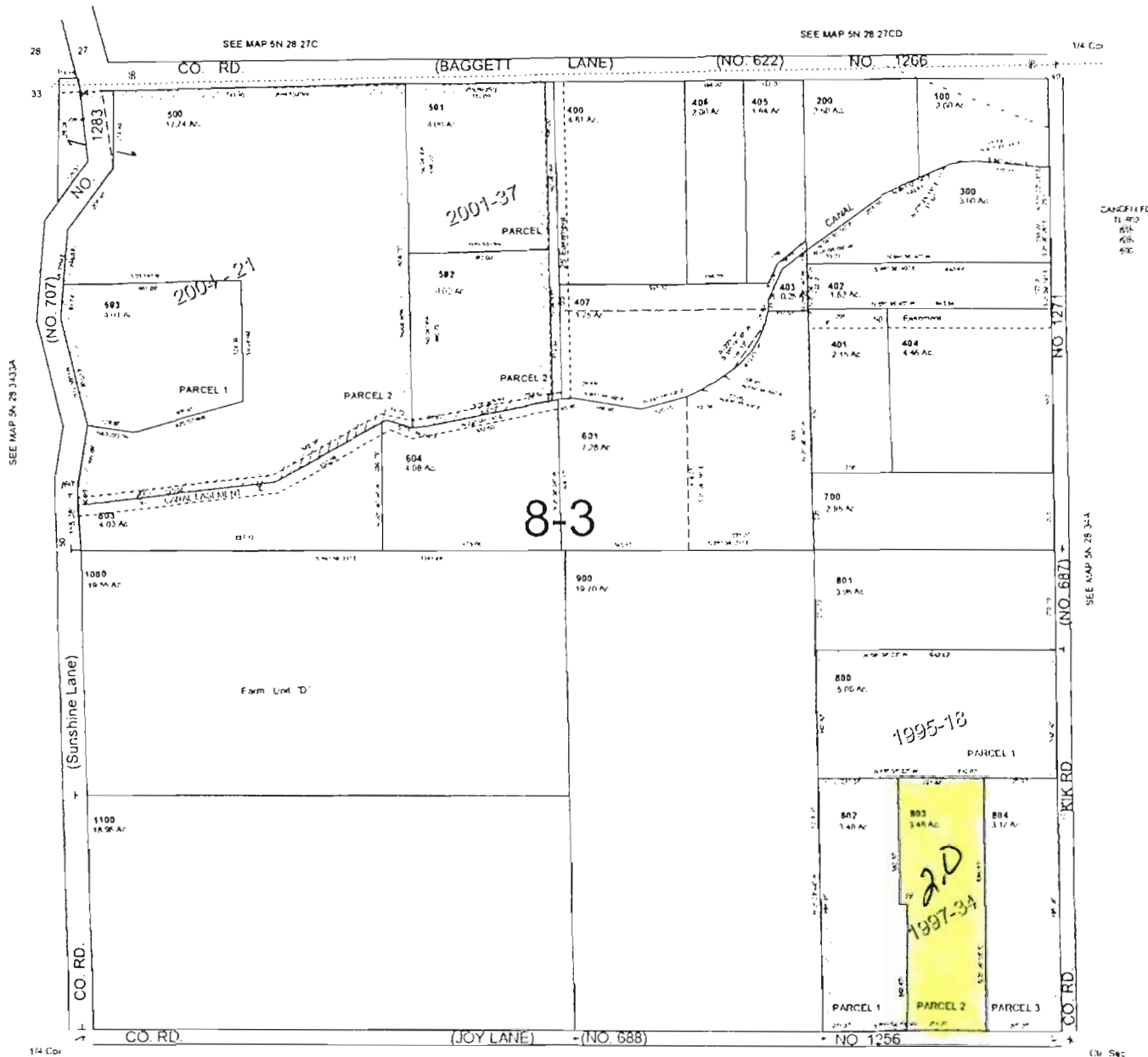
NW 14/ SEC 34 T 1 N R 28E WM UMATILLA COUNTY, OR

SCALE: 1" = 200'

9/29/03

TO 5N2834B

AERIAL PHOTO NO. NZ-1P-104



10724

WATER RESOURCES DEPT
SALEM, OREGON

RECEIVED
NOV 10 2008

1/4 Cor

SEE MAP 5N 28 34C

1/4 Cor

5N2834B

This map was prepared for Assessment purposes only.

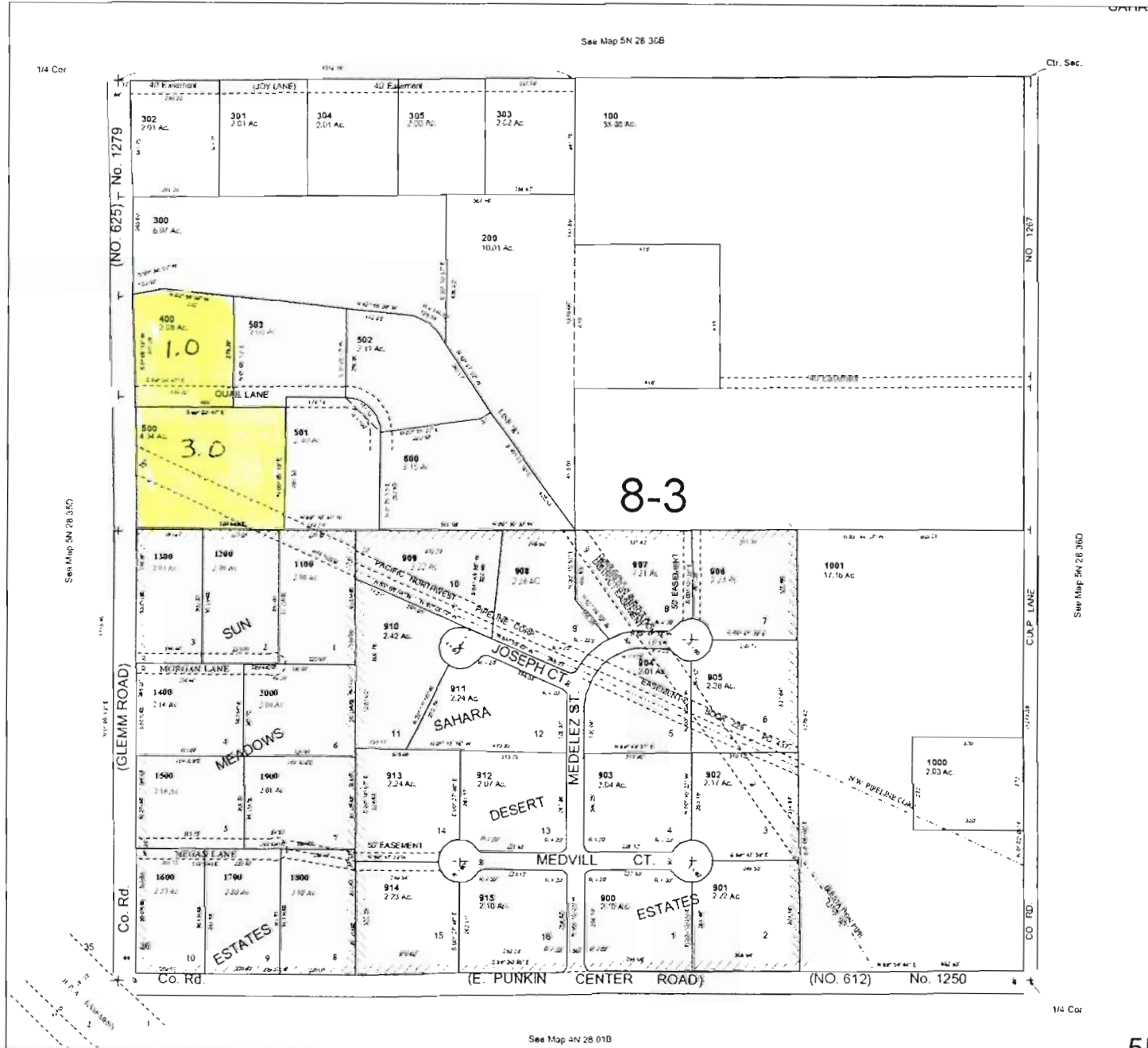


SW1/4 SEC 36 T5N R28E WM UMATILLA COUNTY, OR

SCALE: 1" = 200'

TO
3/06/03

5N2836C



10724

WATER RESOURCES DEPT
SALEM, OREGON

NOV 10 2008

RECEIVED

5N2836C

This map was prepared for Assessment & Taxation purposes and has not been prepared or is suitable for legal, engineering or surveying purposes

SE1/4 SEC 4 T 4 R 28 E WM UMATILLA COUNTY, OR

SCALE: 1" = 200'

12/20/06

From

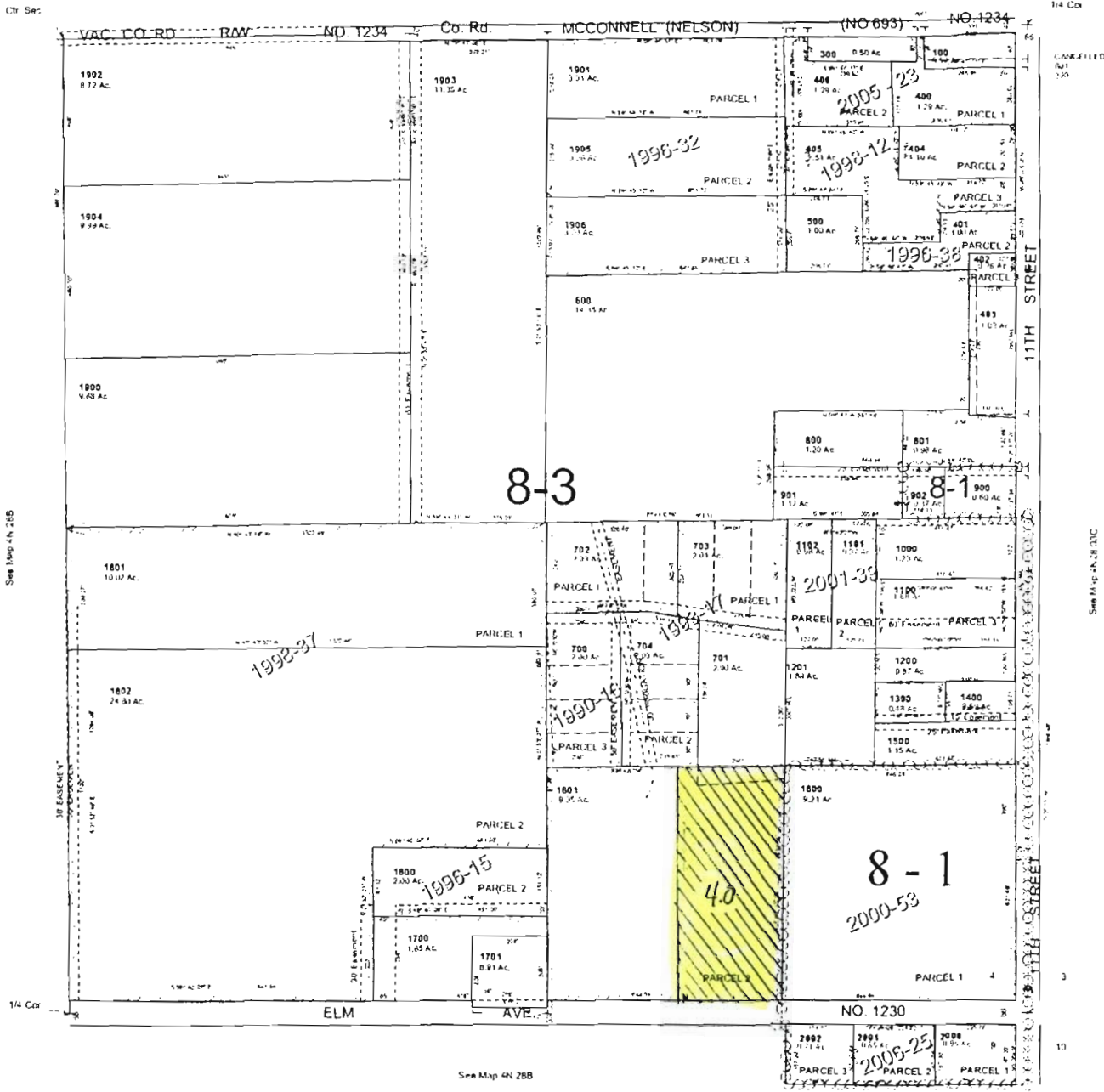
4N28C)

Aerial Photo NZ-1P-120



See Map 4N 28B

T 10724



City Sec

1/4 Cor

See Map 4N 28B

See Map 4N 28B

1/4 Cor

See Map 4N 28B

1/4

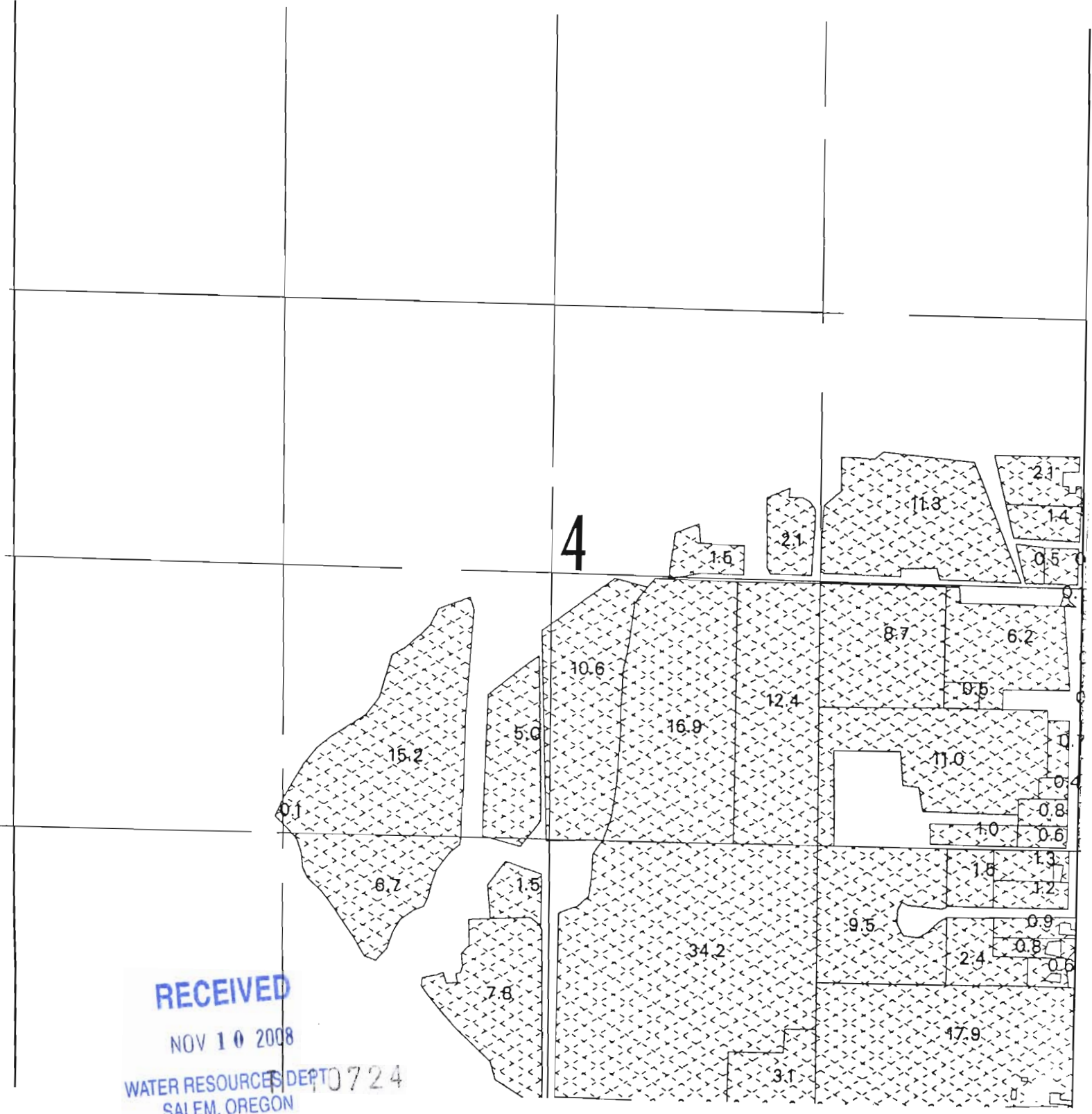
WATER RESOURCES DEPT
SALEM, OREGON

NOV 10 2008

RECEIVED

4N2804D

TOWNSHIP 4 N., RANGE 28 E., W.M.



RECEIVED
NOV 10 2008
WATER RESOURCES DEPT 0724
SALEM, OREGON

SCALE 1 inch = 660 feet



This map was prepared for assessment purposes

NW1/4 SEC 31 T10N R29E WM UMATILLA COUNTY SCALE 1"=200'

5N 29 31B
AERIAL PHOTO NO 1P-101

TO

T 10724



RECEIVED
NOV 10 2008
WATER RESOURCES DEPT
SALEM, OREGON

5N 29 31B

UMATILLA COUNTY

1"=100'

SUNLAND ESTATES

Acres 1010 No. NZ-2P-

REPLAT OF BLK 5

SUNLAND ESTATES

REPLAT OF LTS 17-20, BLK 1, LTS 1-9, BLK 4
LTS 1-13, BLK 6 SUNLAND ESTATES

ALDRIDGE ADDITION

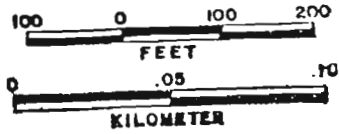
4N 28 16AD

UMATILLA

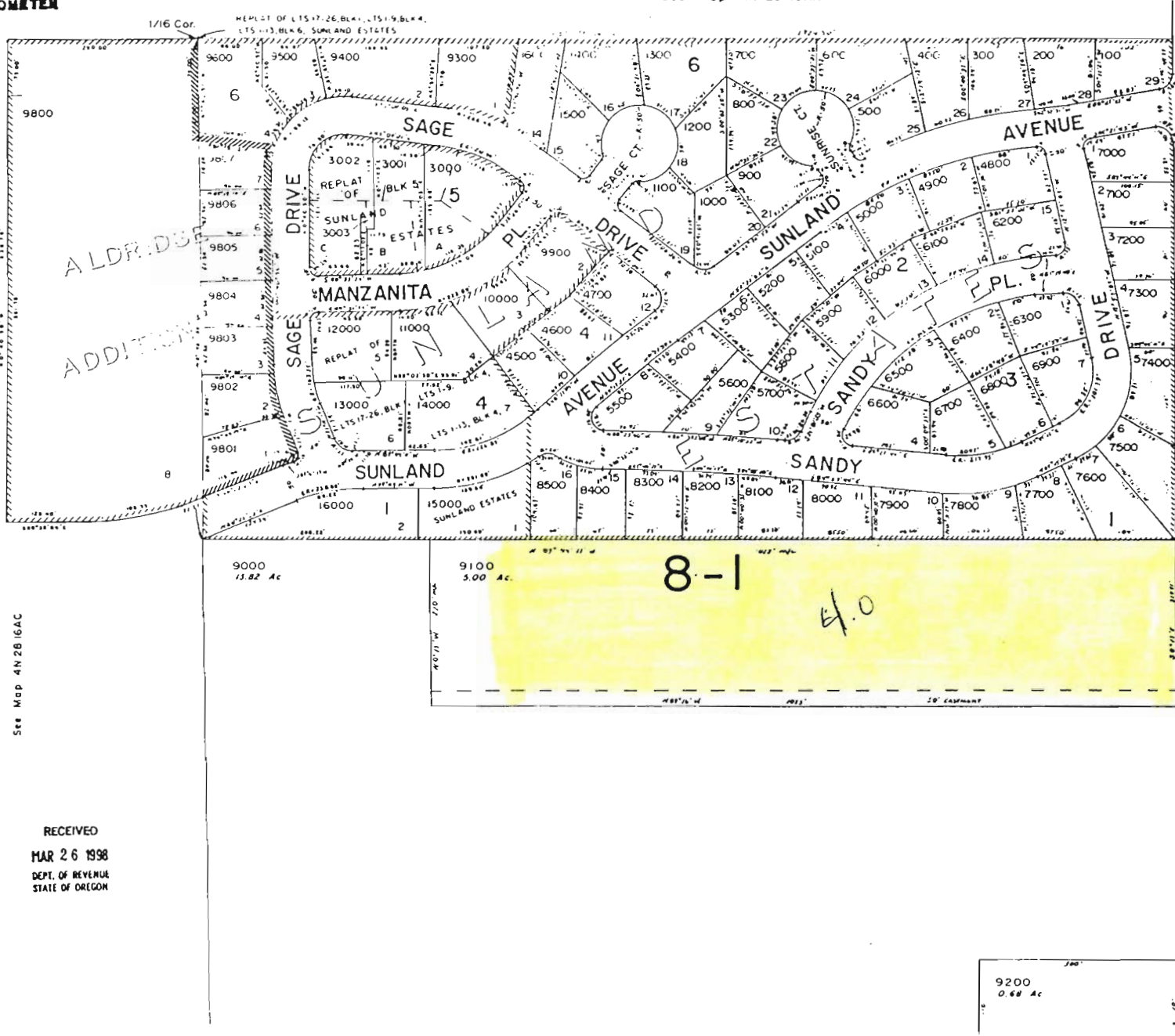
FROM

See Map 4N 28 16AA

SCALE 1:2400



T 10724



ALDRIDGE
ADDITION

CANCELLED

- TL 3601
- 3100
- 3200
- 3300
- 3400
- 3500
- 3600
- 3700
- 3800
- 3900
- 4000
- 4100
- 4200
- 4300
- 4400
- 4500
- 4600
- 4700
- 4800
- 4900
- 5000
- 5100
- 5200
- 5300
- 5400
- 5500
- 5600
- 5700
- 5800
- 5900
- 6000
- 6100
- 6200
- 6300
- 6400
- 6500
- 6600
- 6700
- 6800
- 6900
- 7000
- 7100
- 7200
- 7300
- 7400
- 7500
- 7600
- 7700
- 7800
- 7900
- 8000
- 8100
- 8200
- 8300
- 8400
- 8500
- 8600
- 8700
- 8800
- 8900
- 9000
- 9100
- 9200

See Map 4N 28 15BC

(With St. Hermiston)

BUTLER CREEK

4N2816A

1/4 Cor.

RECEIVED
NOV 10 2008
WATER RESOURCES DEPT
SALEM, OREGON

See Map 4N 28 16AC

RECEIVED
MAR 26 1998
DEPT. OF REVENUE
STATE OF OREGON

9200
0.68 Ac

9100
3.00 Ac

9000
15.82 Ac



Oregon

Theodore R. Kulongoski, Governor

Water Resources Department
North Mall Office Building
725 Summer Street NE, Suite A
Salem, OR 97301-1266
503-986-0900
FAX 503-986-0904

October 5, 2007

CHUCK WILCOX
HERMISTON IRRIGATION DISTRICT
366 E. HURLBURT
HERMISTON, OREGON 97838

Dear Mr. Wilcox:

This letter is to inform you that I have added an additional parcel to the maps and draft certificate for water use within the Hermiston Irrigation District. I added acres in Township 4 North, Range 28 East, Section 16, SENE, taxlot 9100 in response to a request from Delores Glynn. There are 4.0 acres showing for that tax lot now. The acreage is diminished because of the number of mobile homes on the property.

A revised map for the section is attached. This land will be included on the next set of draft maps and certificates that are produced for your review. If you have additional questions or concerns, please contact me again.

Sincerely,

Mary S. Grainey
Engineer/CWRE

cc. Michael Ladd, Regional Manager
Ms. Delores Glynn
21666 SE Smokey Ln
Eagle Creek, OR 97022

RECEIVED

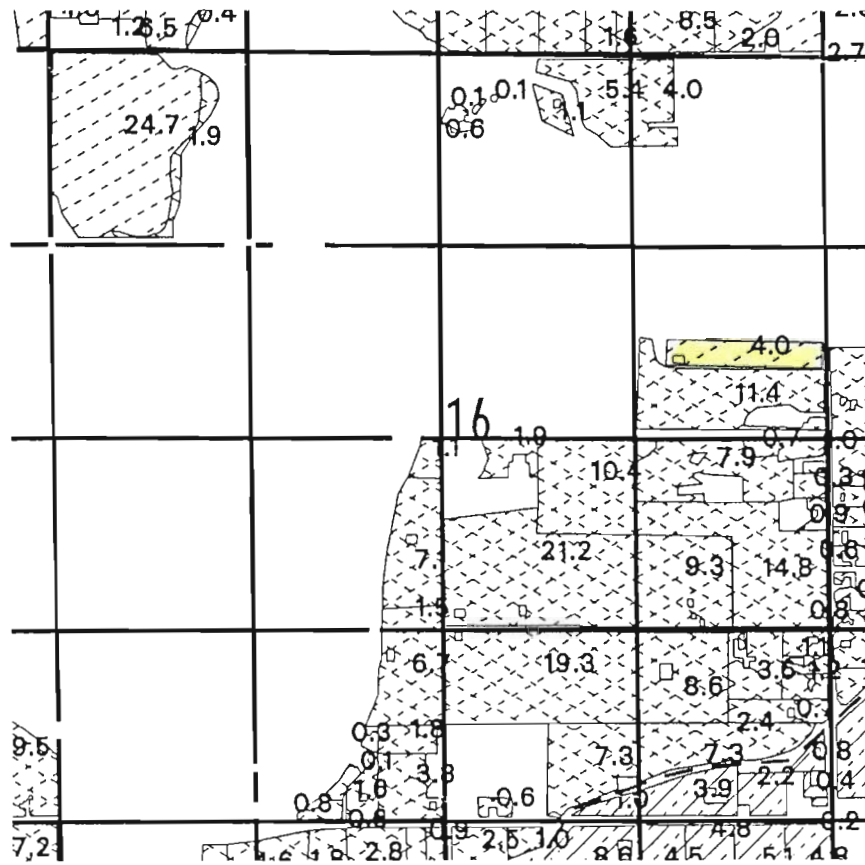
NOV 10 2008

WATER RESOURCES DEPT
SALEM, OREGON

OCT 10 2007

T 0724

TOWNSHIP 4 N., RANGE 28 E., W.M.



RECEIVED

NOV 10 2008

WATER RESOURCES DEPT
SALEM, OREGON

SCALE 1 inch = 1320 feet



T 10724

This map was prepared for assessment purposes

SE1/4 NE1/4 SEC .5 T4NR28E WM

From

4N2816AL

UMATILLA COUNTY

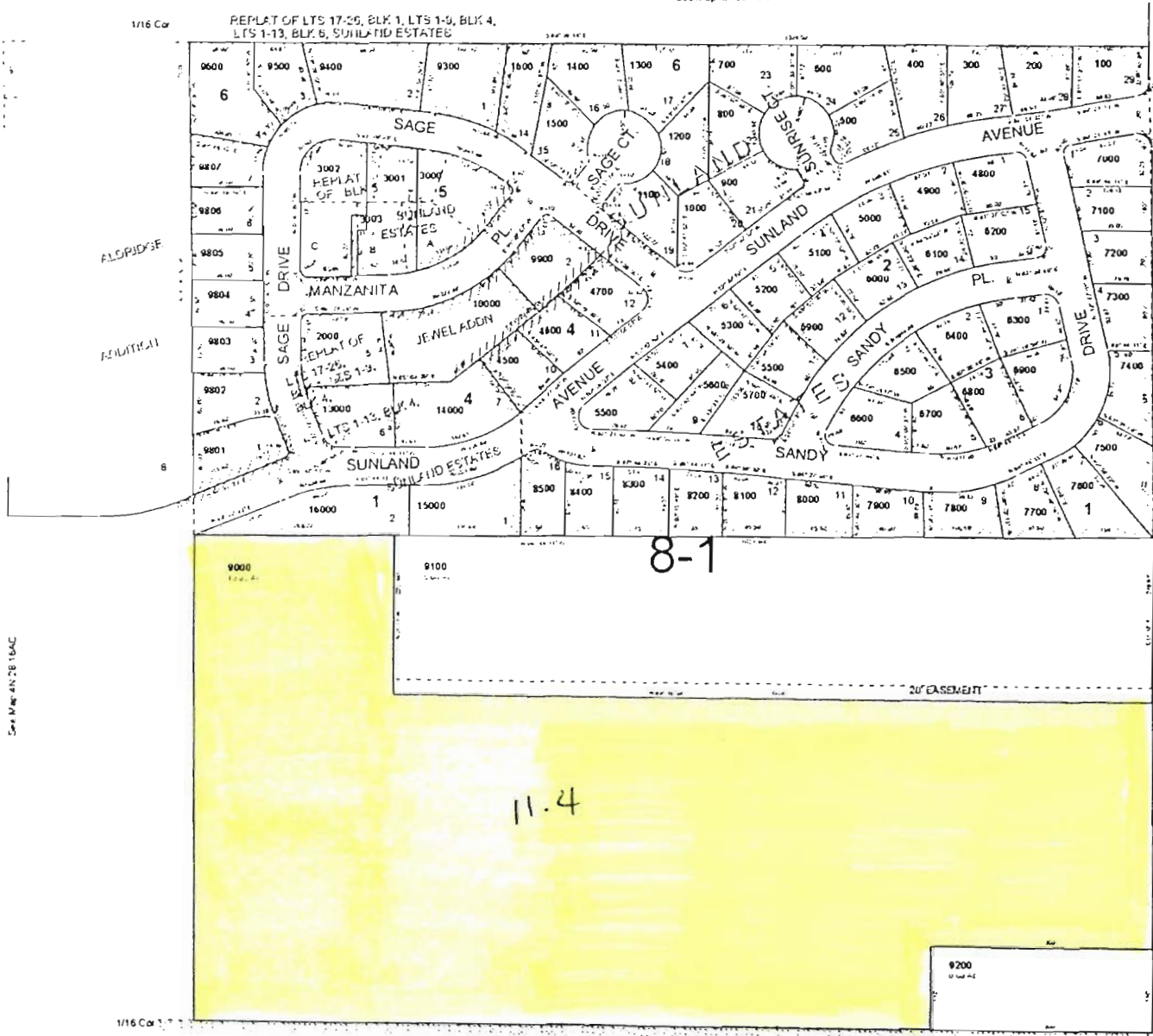
SCALE 1"=100'

SUNLAND ESTATES
AERIAL PHOTO NZ-2P-25
REPLAT OF BLK 5 SUNLAND ESTATES
REPLAT OF LOTS 17-20BLK 1, LTS 1-9 BLK 4
LTS 1-13 BLK 6 SUNLAND ESTATES
ALDRIDGE ESTATES
JEWEL ADD

See Map 4N 28 16AA

1/16 Cor
REPLAT OF LOTS 17-20, BLK 1, LTS 1-9, BLK 4,
LTS 1-13, BLK 6, SUNLAND ESTATES

1/16 Cor



LANDS

11	1000
12	1100
13	1200
14	1300
15	1400
16	1500
17	1600
18	1700
19	1800
20	1900
21	2000
22	2100
23	2200
24	2300
25	2400
26	2500
27	2600
28	2700
29	2800
30	2900
31	3000
32	3100
33	3200
34	3300
35	3400
36	3500
37	3600
38	3700
39	3800
40	3900
41	4000
42	4100
43	4200
44	4300
45	4400
46	4500
47	4600
48	4700
49	4800
50	4900
51	5000
52	5100
53	5200
54	5300
55	5400
56	5500
57	5600
58	5700
59	5800
60	5900
61	6000
62	6100
63	6200
64	6300
65	6400
66	6500
67	6600
68	6700
69	6800
70	6900
71	7000
72	7100
73	7200
74	7300
75	7400
76	7500
77	7600
78	7700
79	7800
80	7900
81	8000
82	8100
83	8200
84	8300
85	8400
86	8500
87	8600
88	8700
89	8800
90	8900
91	9000
92	9100
93	9200
94	9300
95	9400
96	9500
97	9600
98	9700
99	9800
100	9900
101	10000

See Map 4N 28 16BC

BUTTERCREEK ROAD (11th St. Hermiston)

See Map 4N 28 16D

4N2816AD

T 10724

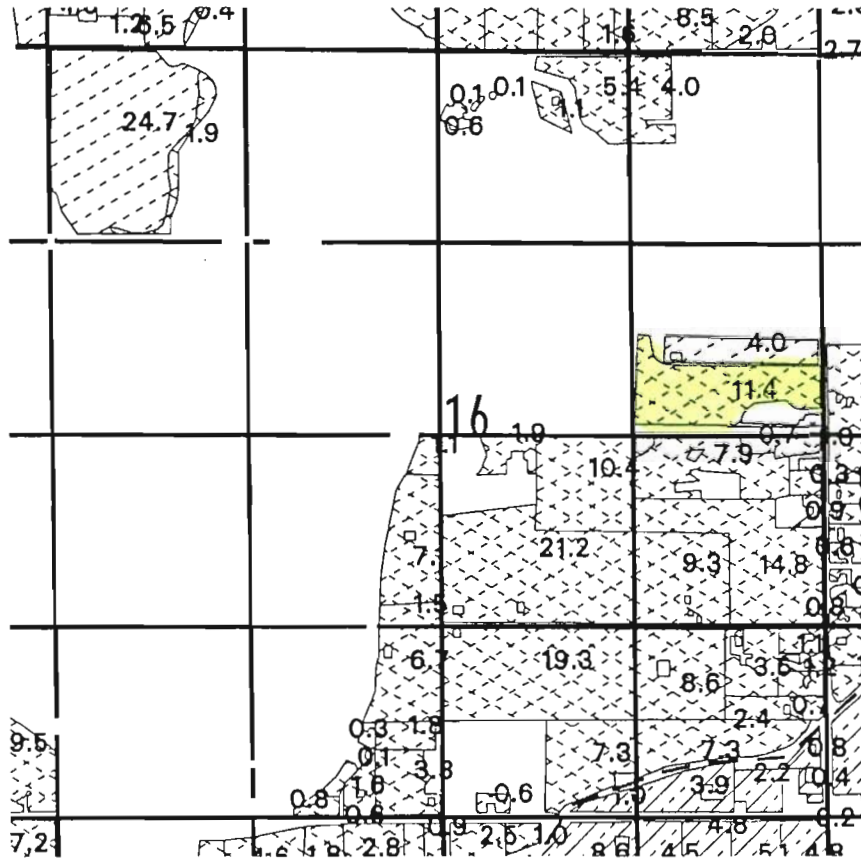
WATER RESOURCES DEPT
SALEM, OREGON

NOV 10 2008

RECEIVED

See Map 4N 28 16AC

TOWNSHIP 4 N., RANGE 28 E., W.M.



RECEIVED

NOV 10 2008

WATER RESOURCES DEPT
SALEM, OREGON

SCALE 1 inch = 1320 feet



T 10724

This map was prepared for Assessment purposes only.



NE 1/4 SEC 26 T 5N R 28 E WM
UMATILLA COUNTY, OR
SCALE: 1"=200'

12103

5N2826A

AERIAL PHOTO NO 1P-103

T 10724
T 10724

To

See Map 5N 2811

1/4 Cor.

CANCELLED

PREVIOUS TRANSFER

3 AF

2,24A 6 AF

Tax Lot 200 17.18 A 2

9.6A @ 6 AF

1.8A @ 6 AF

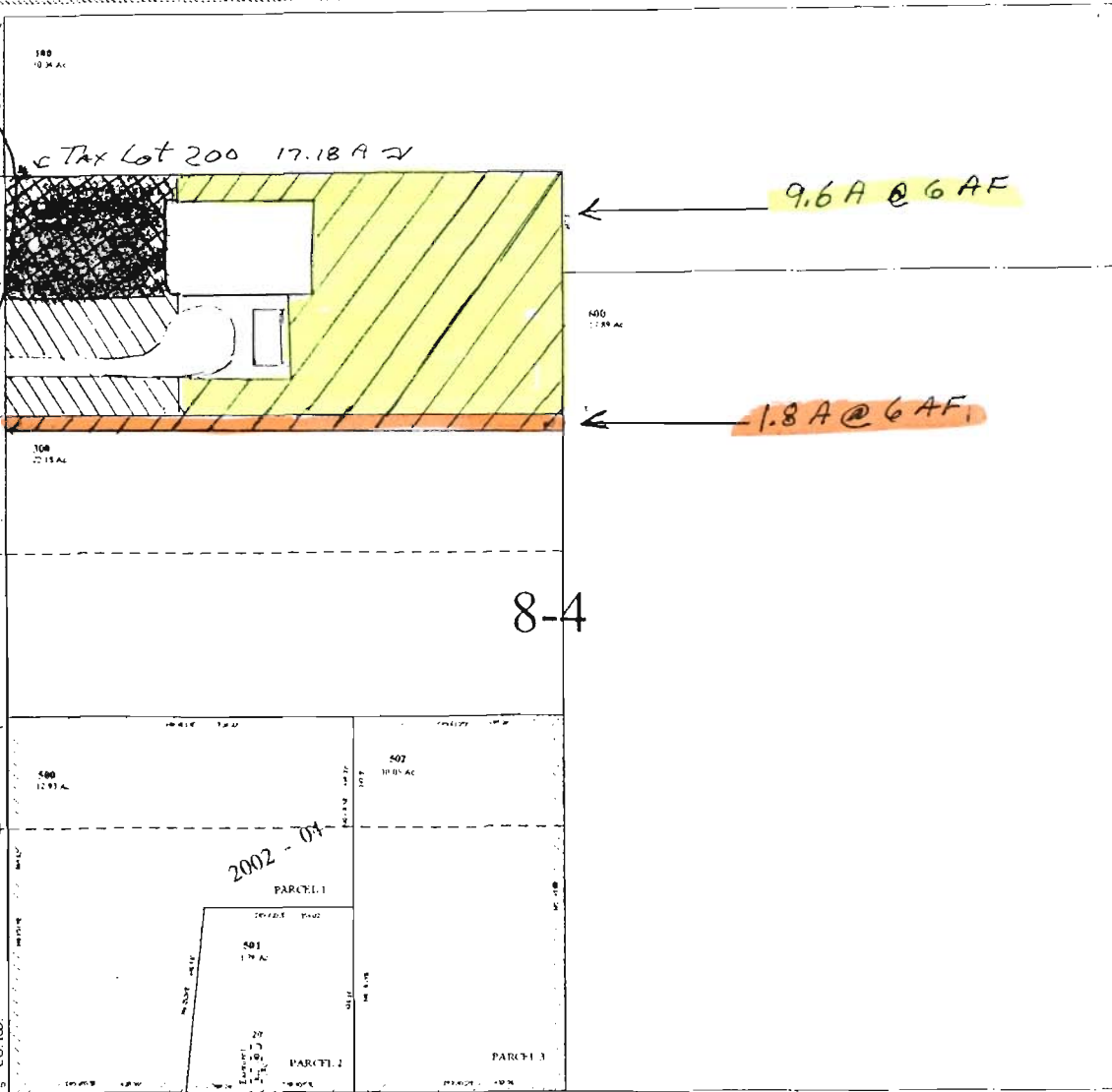
8-4

See Map 5N 28 788

RECEIVED

NOV 10 2008

WATER RESOURCES DEPT
SALEM, OREGON



5N2826A

map was prepared for Assessment purposes only.



NE 1/4 SEC 26 T 5N R 28 E WM
UMATILLA COUNTY, OR
SCALE: 1"=200'

92103

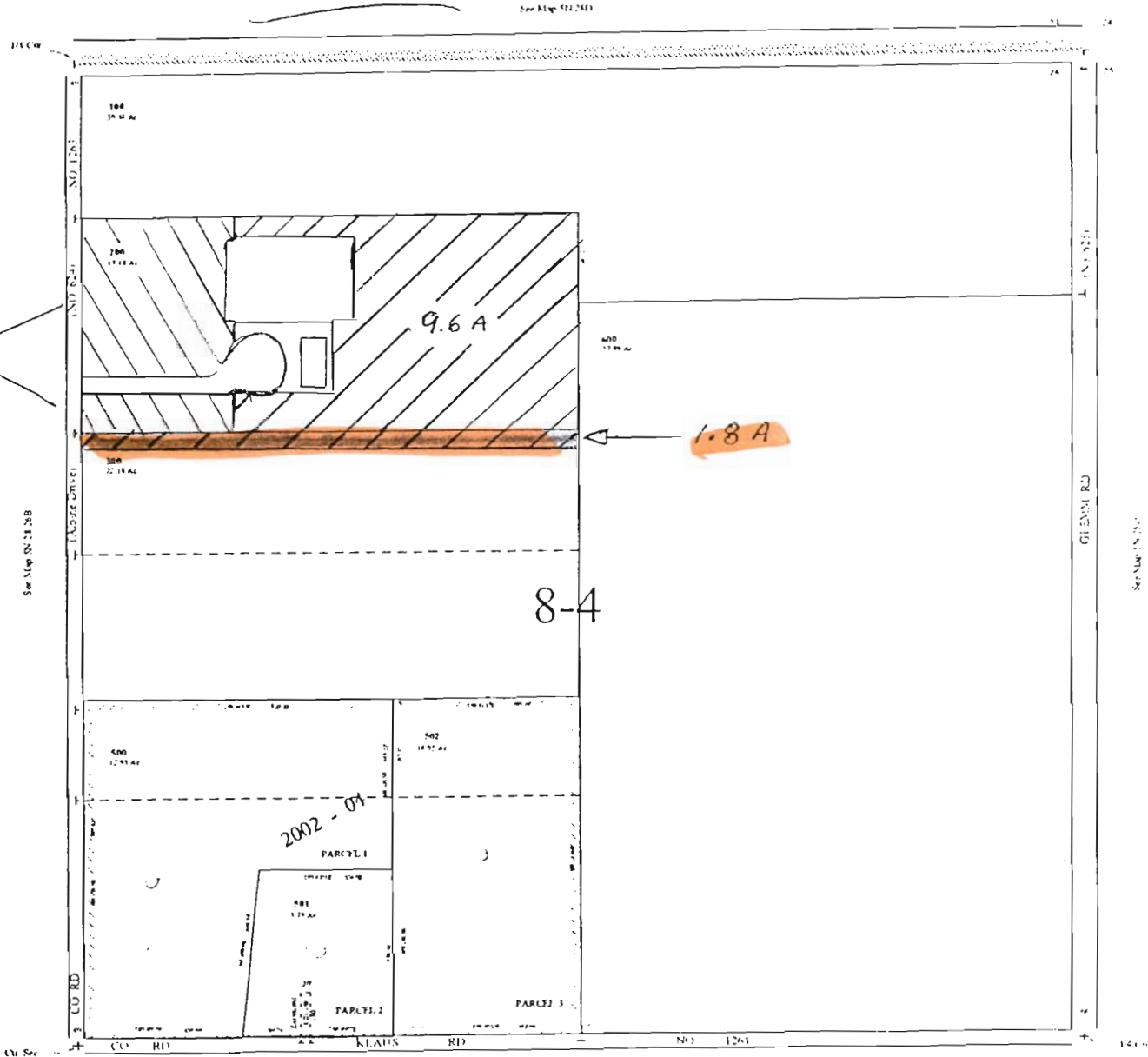
5N2826A

AERIAL PHOTO NO. 1P-103

T 10724

TO

AREA COVERED IN PREVIOUS TRANSFER



RECEIVED

NOV 10 2008

WATER RESOURCES DEPT
SALEM, OREGON

5N2826A