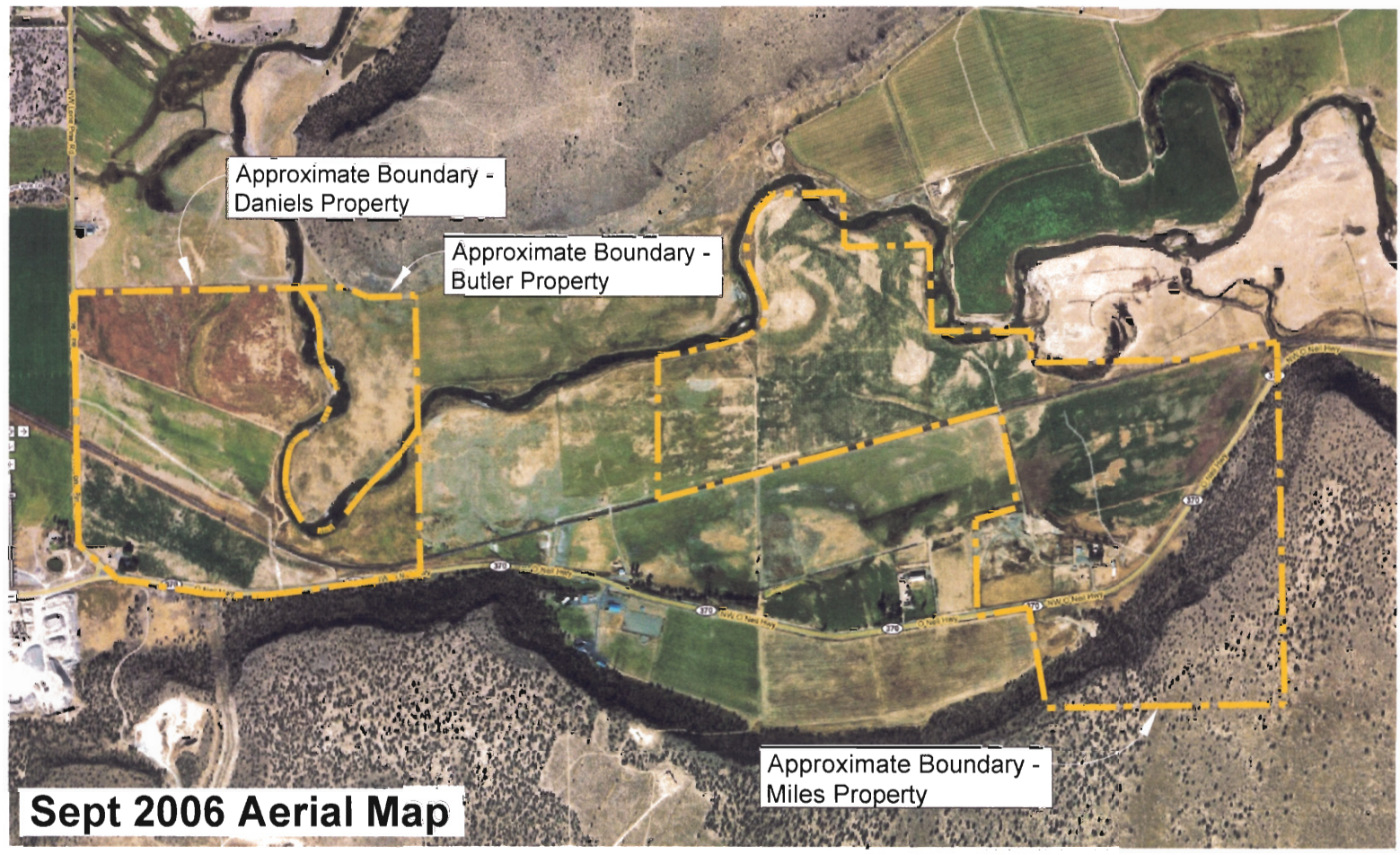
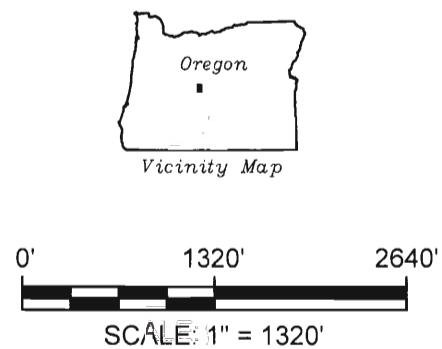


June 2005 Aerial Map



Sept 2006 Aerial Map

WATER TRANSFER MAP
LOW LINE DITCH CO.
TAX LOT 200
 Located in NW¼ - SW¼ of Section 8
 T15S, R16E, W.M. ~ Crook County, Oregon



RECEIVED
 NOV 21 2008
 WATER RESOURCES DEPT
 SALEM, OREGON



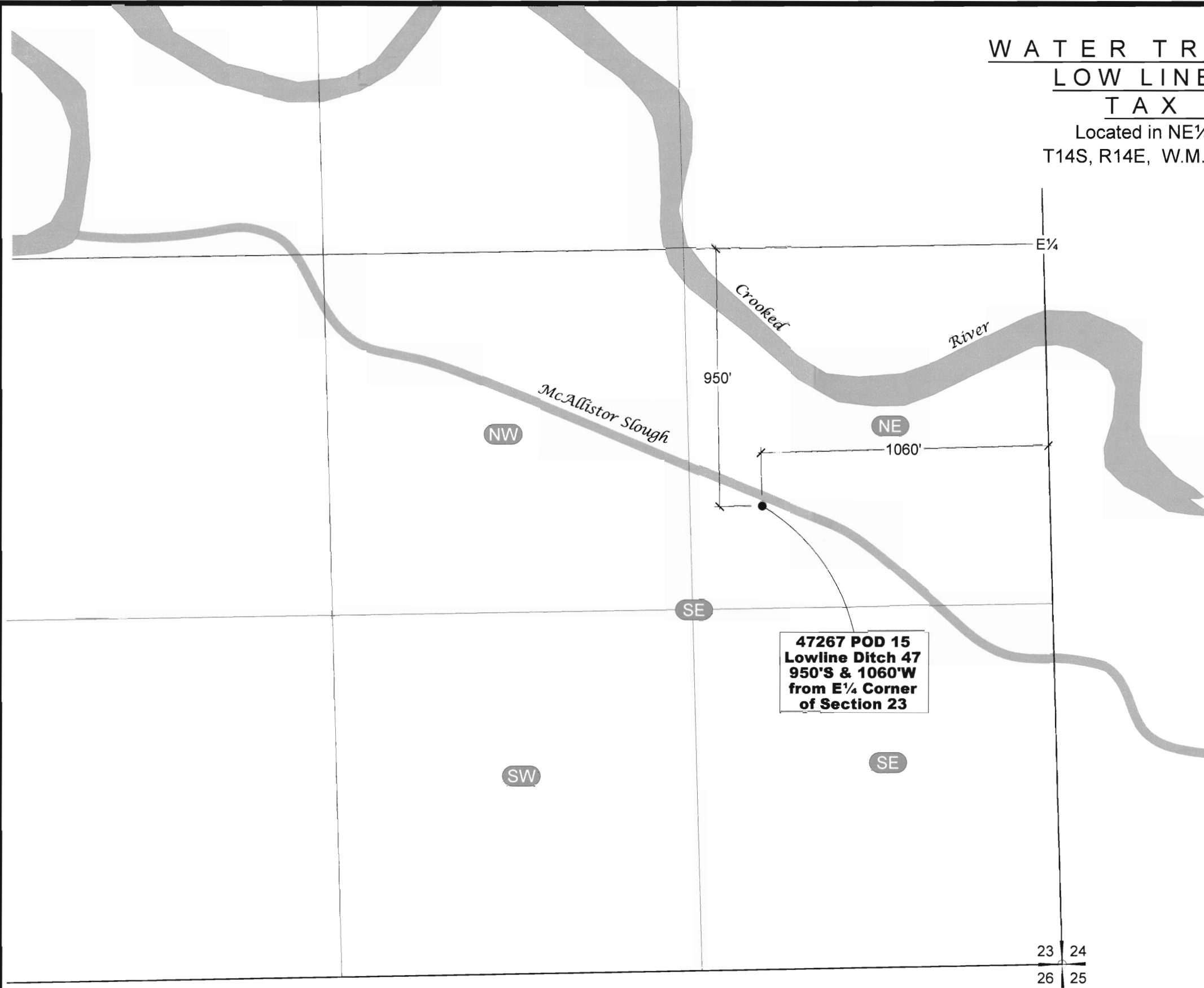
Certificate C-47267 Additional POD - Use Map
 Transfer Map
 Crook County, Oregon

DESIGNED BY	J. Newton	DRAWN BY	S. Schenck	DATE:	Oct 2008	PROJECT NO.	1047-105	FIGURE	3
-------------	-----------	----------	------------	-------	----------	-------------	----------	--------	---

G:\1047\105\Cad\Water\1047105_F1_WtrRightTran_2 13:42 08/25/2008 SS

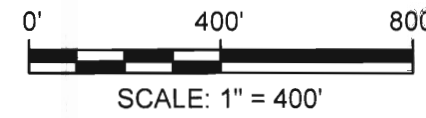
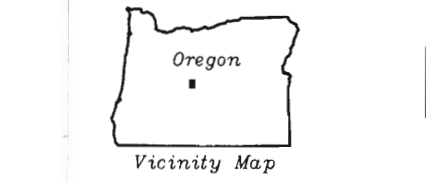
WATER TRANSFER MAP
LOW LINE DITCH CO.
TAX LOT 102

Located in NE¼ - SE¼ of Section 23
 T14S, R14E, W.M. ~ Crook County, Oregon



47267 POD 15
Lowline Ditch 47
950'S & 1060'W
from E¼ Corner
of Section 23

Certified Water Rights Examiner
 418 WRE
 DAVID J. NEWTON
 JAN 16, 1996
 STATE OF OREGON



RECEIVED
 NOV 21 2008
 WATER RESOURCES DEPT
 SALEM, OREGON

T 10732



NEWTON
CONSULTANTS INC.
 Earth, Water and Rock Specialists
 Ph: 541 504-9960 Fax: 541 504-9961

Certificate C-47267 Additional POD Location Map
 Transfer Map
 Crook County, Oregon

DESIGNED BY: **J. Newton**

DRAWN BY: **S. Schenck**

DATE: **June 2008**

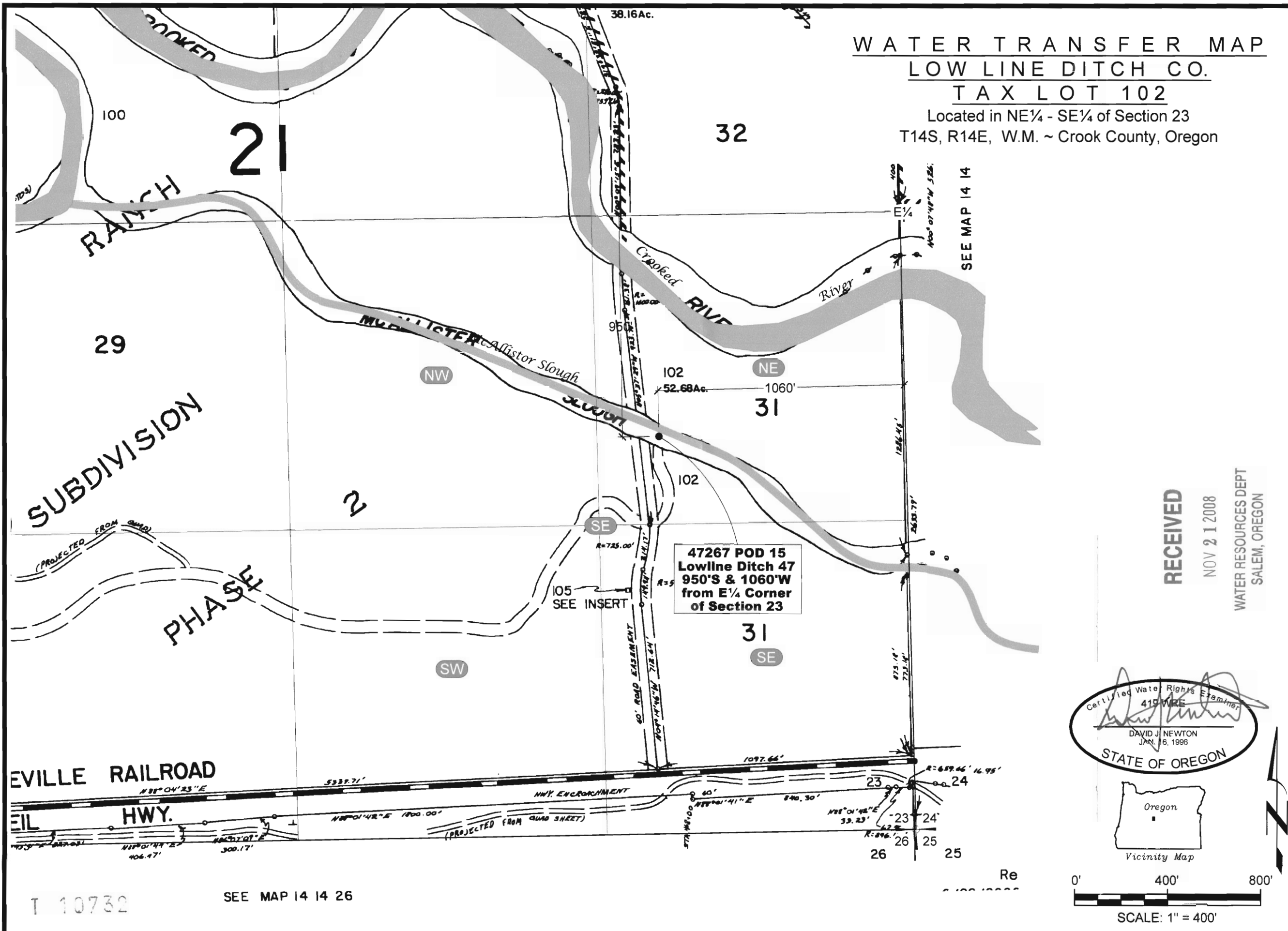
PROJECT NO. **1047-105**

FIGURE **1**

G:\1000\1047\105\Cad\Water\W1047105_F1_WtrRightTran_2_13:42_08/25/2008 SS

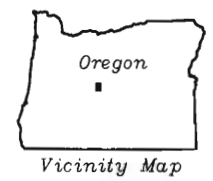
**WATER TRANSFER MAP
LOW LINE DITCH CO.
TAX LOT 102**

Located in NE¼ - SE¼ of Section 23
T14S, R14E, W.M. ~ Crook County, Oregon



RECEIVED
NOV 21 2008
WATER RESOURCES DEPT
SALEM, OREGON

Certified Water Rights Examiner
David J. Newton
419 WRE
DAVID J. NEWTON
JAN 16, 1996
STATE OF OREGON



0' 400' 800'
SCALE: 1" = 400'

Certificate C-47267 Additional POD Location Map
Transfer Map
Crook County, Oregon

NEWTON CONSULTANTS INC.
Earth, Water and Rock Specialists
Ph: 541-504-9960 Fax: 541-504-9961

DESIGNED BY:	J. Newton
DRAWN BY:	S. Schenck
DATE:	June 2008
PROJECT NO.:	1047-105
FIGURE:	1

C:\1000\1047\105\Water\1047105_F1_Wright\ran_2 13:42 08/25/2008 SS

T 10732

SEE MAP 14 14 26