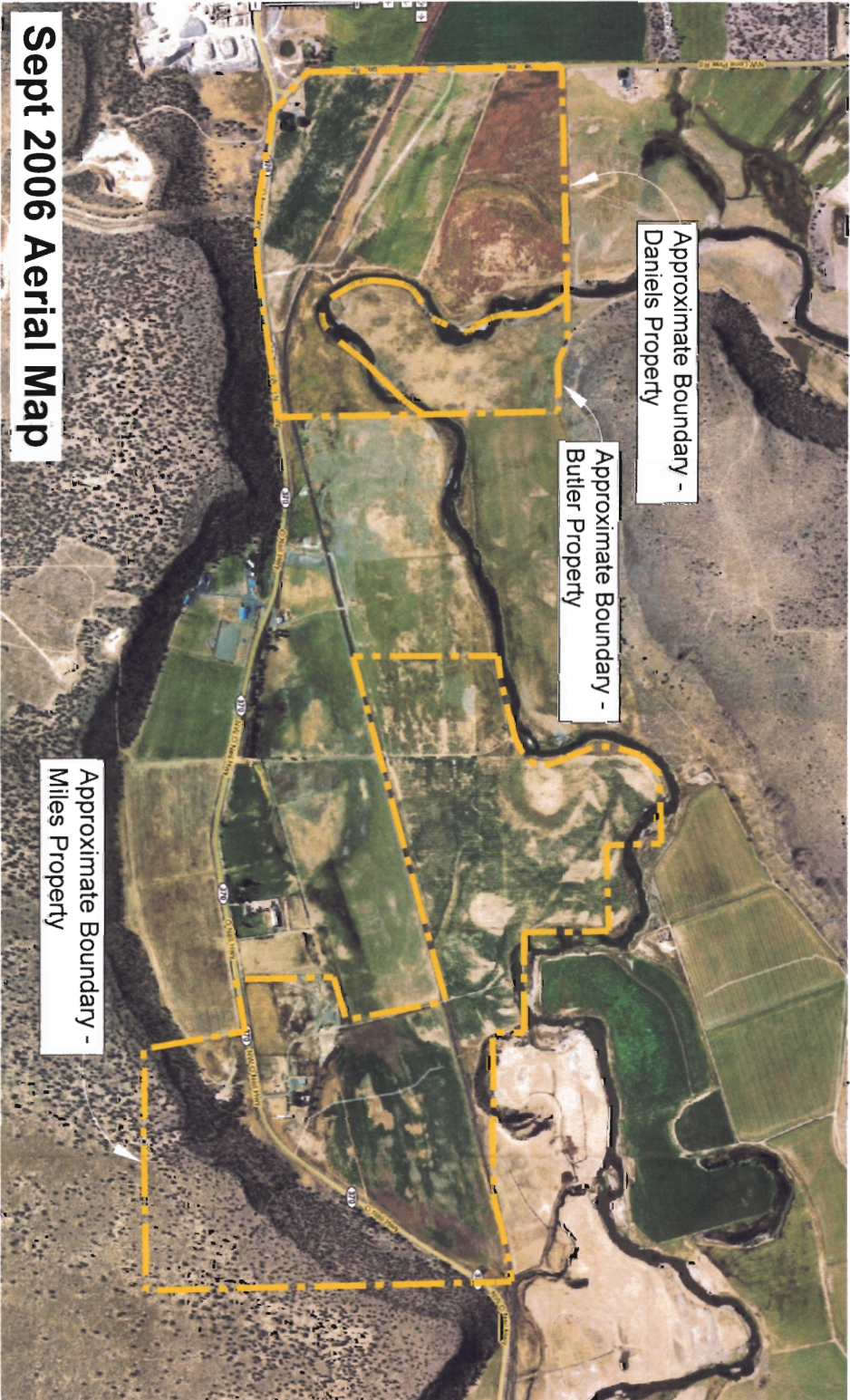


June 2005 Aerial Map

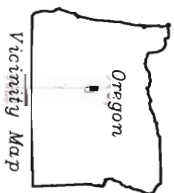


Sept 2006 Aerial Map

WATER TRANSFER MAP  
 DANIELS/MILES PROPERTY  
 TAX LOT 106, 200, 201 & 205  
 Located in SW $\frac{1}{4}$  - SW $\frac{1}{4}$  of Section 20 &  
 Located in SE $\frac{1}{4}$  - SW $\frac{1}{4}$  of Section 20 &  
 Located in NE $\frac{1}{4}$  - NW $\frac{1}{4}$  & SW $\frac{1}{4}$  - NW $\frac{1}{4}$  of Section 29  
 T14S, R14E, W.M.  
 Crook County, Oregon

RECEIVED  
 NOV 21 2008

WATER RESOURCES DEPT  
 SALEM, OREGON



**NEWTON**  
 CONSULTANTS INC.  
 Earth, Water and Rock Specialists  
 Ph: 541 504-9960 Fax: 541 504-9961



Certificate C-80795 Primary Rights - Use Map  
 Transfer Map  
 Crook County, Oregon

DESIGNED BY  
 J. Newton

DRAWN BY  
 S. Schenck

DATE:  
 Oct 2008

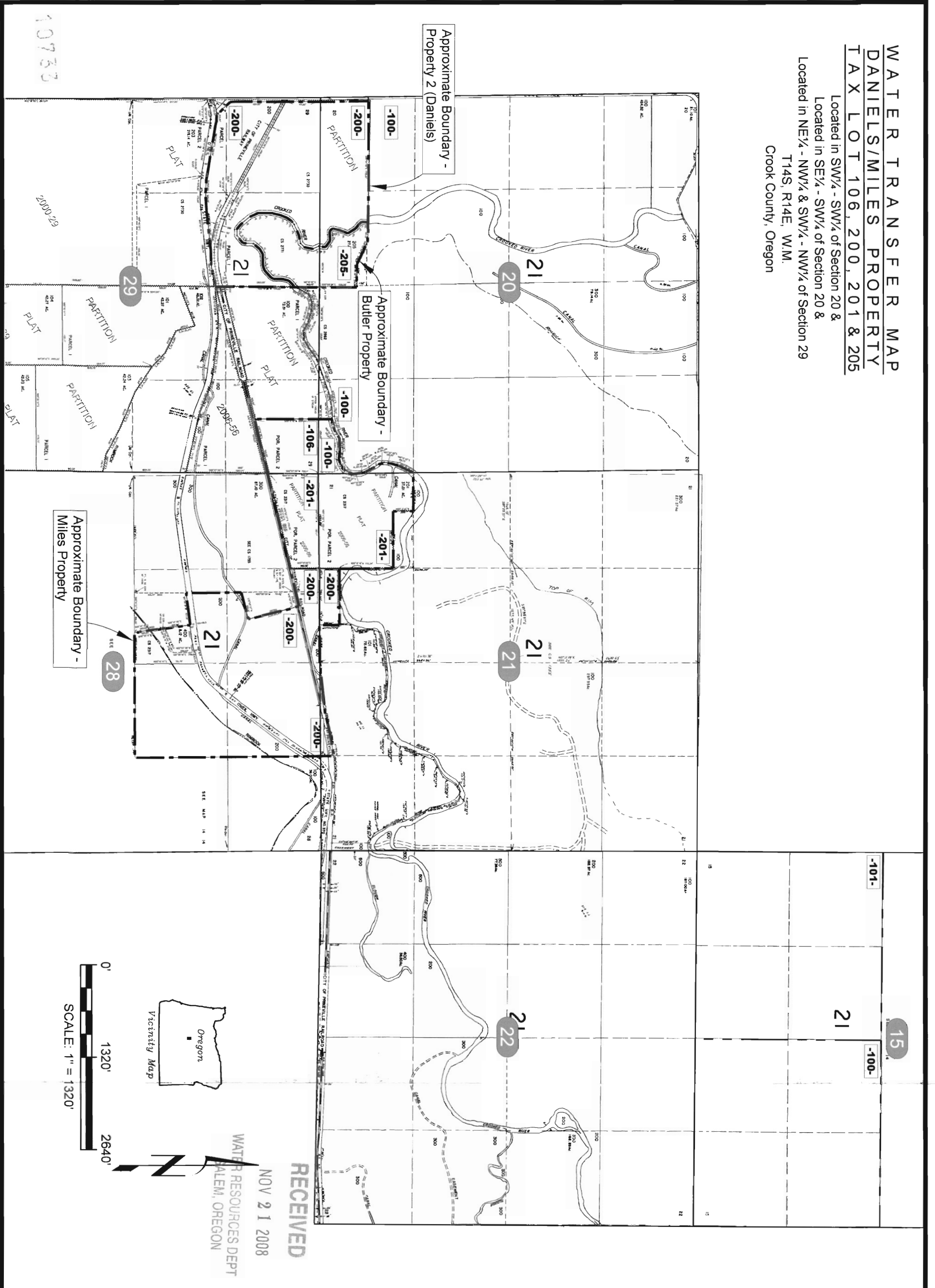
PROJECT NO.  
 1047-105

FIGURE 4

0753

**WATER TRANSFER MAP  
DANIELS/MILES PROPERTY  
TAX LOT 106, 200, 201 & 205**

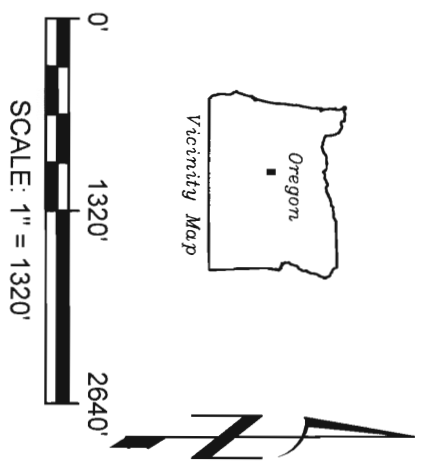
Located in SW<sup>1</sup>/<sub>4</sub> - SW<sup>1</sup>/<sub>4</sub> of Section 20 &  
 Located in SE<sup>1</sup>/<sub>4</sub> - SW<sup>1</sup>/<sub>4</sub> of Section 20 &  
 Located in NE<sup>1</sup>/<sub>4</sub> - NW<sup>1</sup>/<sub>4</sub> & SW<sup>1</sup>/<sub>4</sub> - NW<sup>1</sup>/<sub>4</sub> of Section 29  
 T14S, R14E, W.M.  
 Crook County, Oregon



**NEWTON CONSULTANTS INC.**  
 Earth, Water and Rock Specialists  
 Ph 541 504-9960 Fax 541 504-9961

Certificate C-80795 Primary Rights - Tax Lot Map  
 Transfer Map  
 Crook County, Oregon

DESIGNED BY: <b>J. Newton</b>	DRAWN BY: <b>S. Schenck</b>	DATE: June 2008	PROJECT NO. 1047-105	FIGURE 3
----------------------------------	--------------------------------	--------------------	-------------------------	-------------



**LEGEND**

- 80795 "TO" Primary Water Rights Certificate ID Number
- Water Rights Type
- Acres in Qtr-Qtr Section by Water Right

- Railroad Tracks
- 200- Tax Lot ID Number

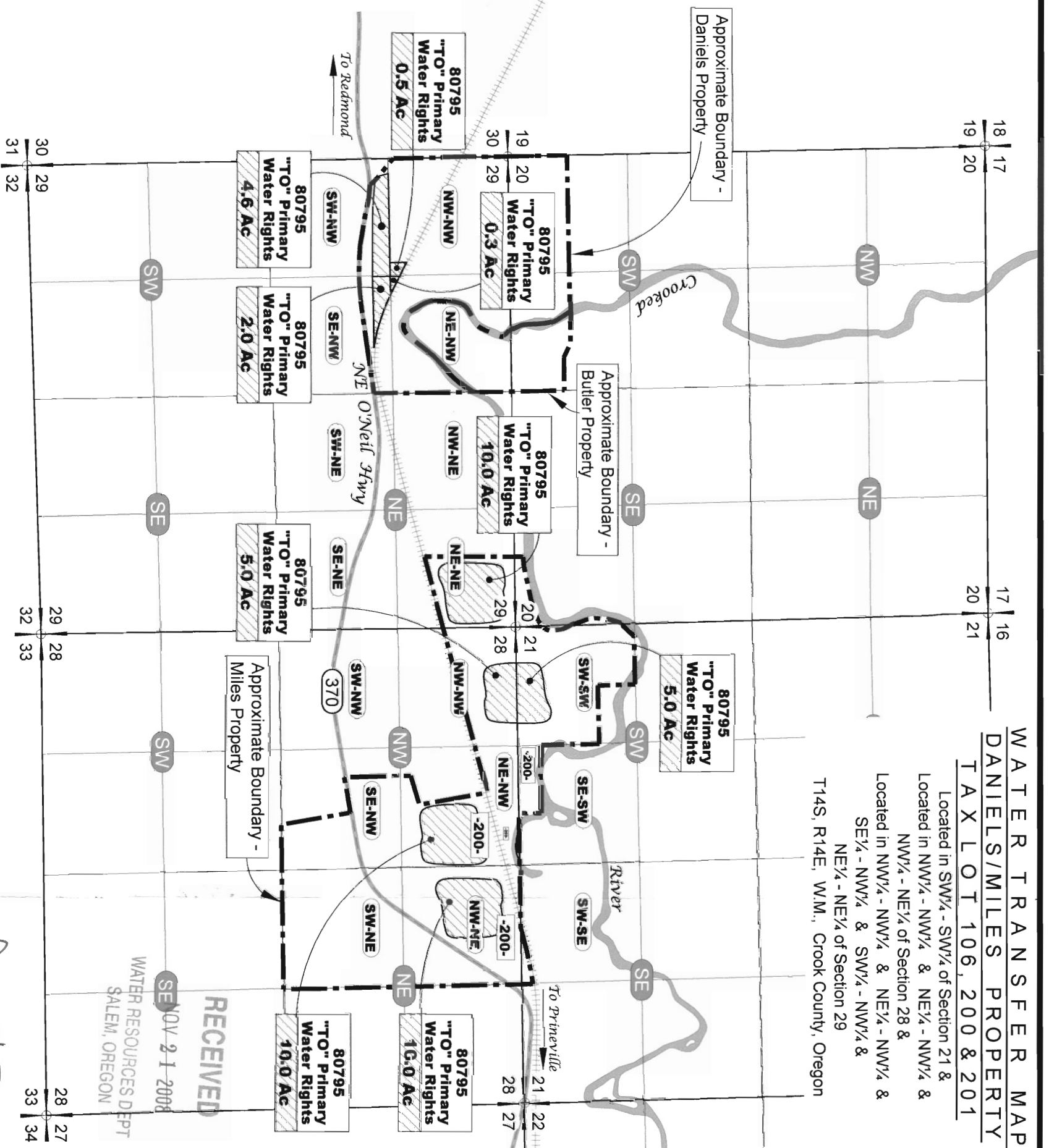
**NOTES**

1. This map was prepared for the purpose of identifying the location of water rights only and is not intended to provide legal dimensions or locations of property ownership lines.

80795 "TO"  
Primary Rights Per Qtr-Qtr

Section	Qtr-Qtr	Acres
21	SW-SW	5.0
28	NW-NW	5.0
	NE-NW	10.0
	NE-NE	10.0
29	NE-NE	10.0
	NW-NW	0.5
	NE-NW	0.3
	SE-NW	2.0
	SW-NW	4.6
		47.4

10733



**WATER TRANSFER MAP**  
**DANIELS/MILES PROPERTY**  
**TAX LOT 106, 200 & 201**  
Located in SW<sup>1</sup>/<sub>4</sub> - SW<sup>1</sup>/<sub>2</sub> of Section 21 &  
Located in NW<sup>1</sup>/<sub>4</sub> - NW<sup>1</sup>/<sub>4</sub> & NE<sup>1</sup>/<sub>4</sub> - NW<sup>1</sup>/<sub>4</sub> &  
NW<sup>1</sup>/<sub>4</sub> - NE<sup>1</sup>/<sub>2</sub> of Section 28 &  
Located in NW<sup>1</sup>/<sub>4</sub> - NW<sup>1</sup>/<sub>4</sub> & NE<sup>1</sup>/<sub>4</sub> - NW<sup>1</sup>/<sub>4</sub> &  
SE<sup>1</sup>/<sub>4</sub> - NW<sup>1</sup>/<sub>4</sub> & SW<sup>1</sup>/<sub>4</sub> - NW<sup>1</sup>/<sub>4</sub> &  
NE<sup>1</sup>/<sub>4</sub> - NE<sup>1</sup>/<sub>4</sub> of Section 29  
T14S, R14E, W.M., Crook County, Oregon

STATE OF OREGON  
Certified Water Rights Examiner  
DAVID J. NEWTON  
JAN 16, 1996

RECEIVED  
NOV 21 2008  
WATER RESOURCES DEPT  
SALEM, OREGON

**Certificate C-80795 Primary Rights "TO" Map**  
**Transfer Map**  
**Crook County, Oregon**



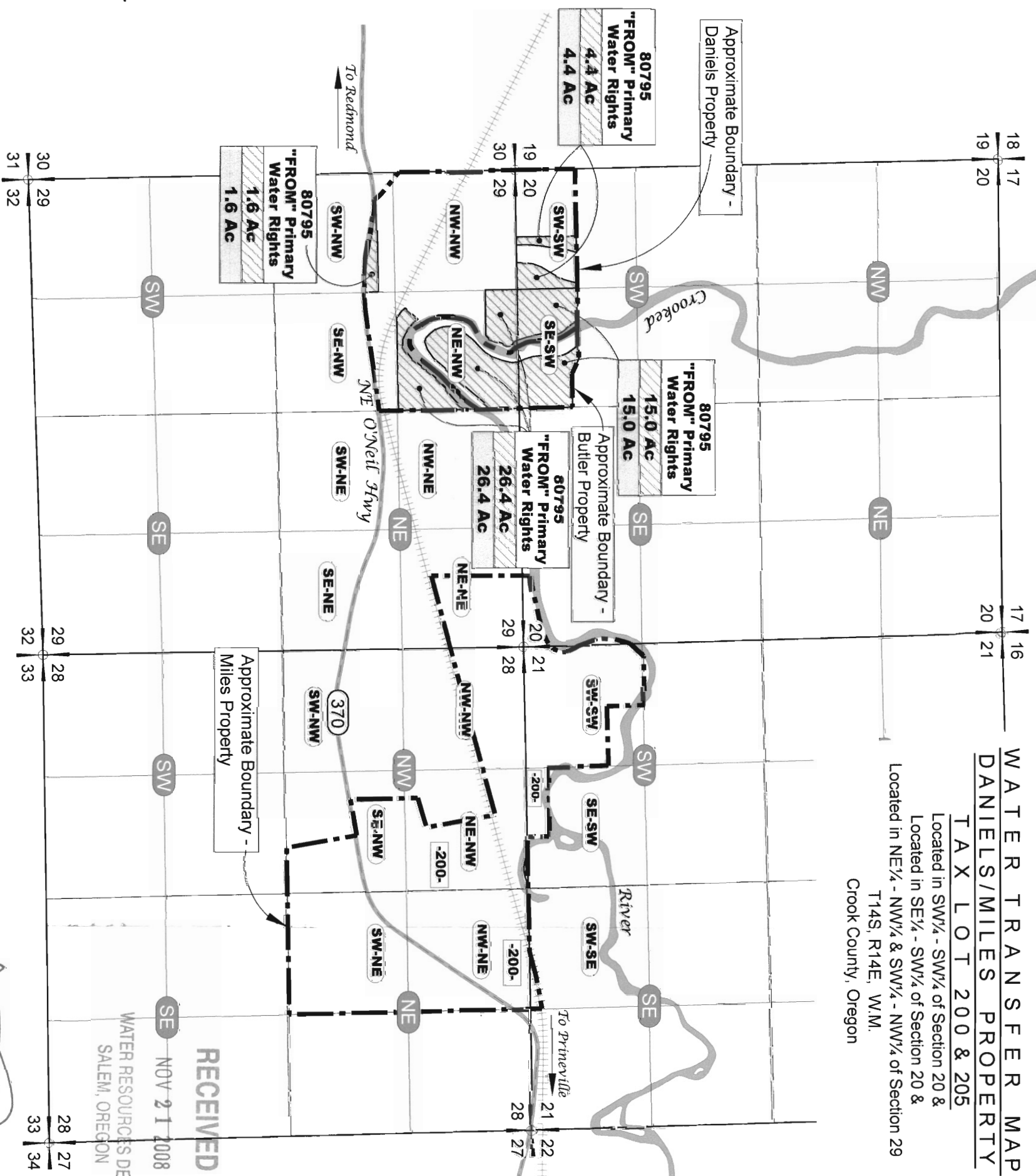
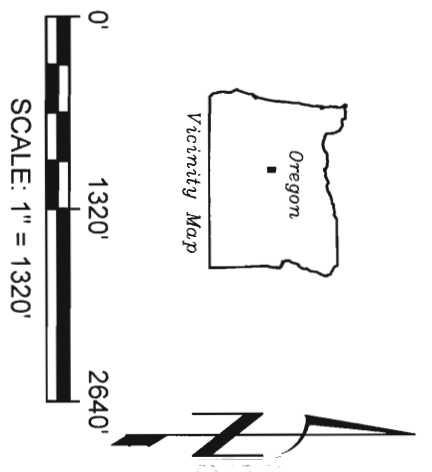
10733

Section	Qtr-Qtr	Acres
20	SW-SW	4.4
20	SE-SW	15.0
29	NE-NW	26.4
29	SW-NW	1.6
Primary Rights Per Qtr-Qtr		47.4

**NOTES**  
 1. This map was prepared for the purpose of identifying the location of water rights only and is not intended to provide legal dimensions or locations of property ownership lines.

**LEGEND**

- Water Rights Certificate ID Number
- Water Rights Type
- Acres in Qtr-Qtr Section by Water Right
- "FROM" Acres Involved in Transfer
- Railroad Tracks
- Tax Lot ID Number



**WATER TRANSFER MAP**  
**DANIELS/MILES PROPERTY**  
**TAX LOT 200 & 205**  
 Located in SW<sup>1</sup>/<sub>4</sub> - SW<sup>1</sup>/<sub>4</sub> of Section 20 &  
 Located in SE<sup>1</sup>/<sub>4</sub> - SW<sup>1</sup>/<sub>4</sub> of Section 20 &  
 Located in NE<sup>1</sup>/<sub>4</sub> - NW<sup>1</sup>/<sub>4</sub> & SW<sup>1</sup>/<sub>4</sub> - NW<sup>1</sup>/<sub>4</sub> of Section 29  
 T14S, R14E, W.M.  
 Crook County, Oregon

**RECEIVED**  
 NOV 21 2008  
 WATER RESOURCES DEP  
 SALEM, OREGON

State of Oregon  
 David J. Newton  
 JAN 16, 1995

**Certificate C-80795 Primary Rights "FROM" Map**  
**Transfer Map**  
**Crook County, Oregon**



DESIGNED BY: J. Newton	DRAWN BY: S. Schenck	DATE: June 2008	PROJECT NO. 1047-105	FIGURE 1
---------------------------	-------------------------	--------------------	-------------------------	-------------