

DESCHUTES COUNTY SEC.24 T14S R13E

SCALE - 1" = 400'



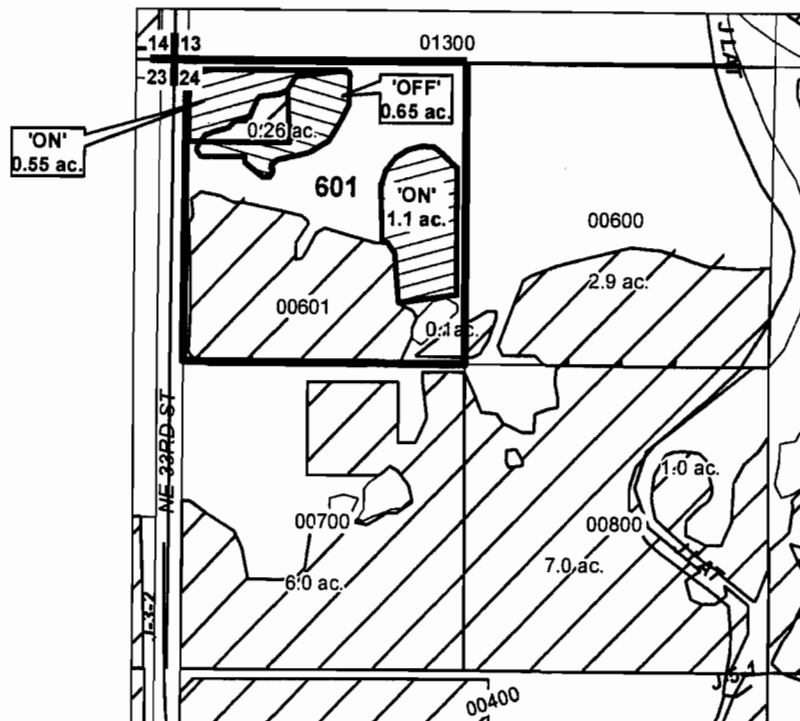
NW 1/4 OF THE NW 1/4

RECEIVED

NOV 28 2008

WATER RESOURCES DEPT
SALEM, OREGON

DISTRICT INTERNAL
NOTICE #: T-2008-016



"OFF" / "ON" MAP

	EXISTING WATER RIGHTS
	OFF LANDS
	ON LANDS



APPLICATION FOR WATER RIGHTS TRANSFER
DON R. & JUDIE A. DUNN / DON R. & JUDIE A. DUNN (0.55)
COID / DON R. & JUDIE A. DUNN (1.0)

TAXLOT #:601

T 10741

1.65 ACRES

DATE: 07-02-08

FILE: E:\TRANSFER\WRTRANS08\DUNN

DESCHUTES COUNTY SEC.12 T15S R12E

RECEIVED

SCALE - 1" = 400'

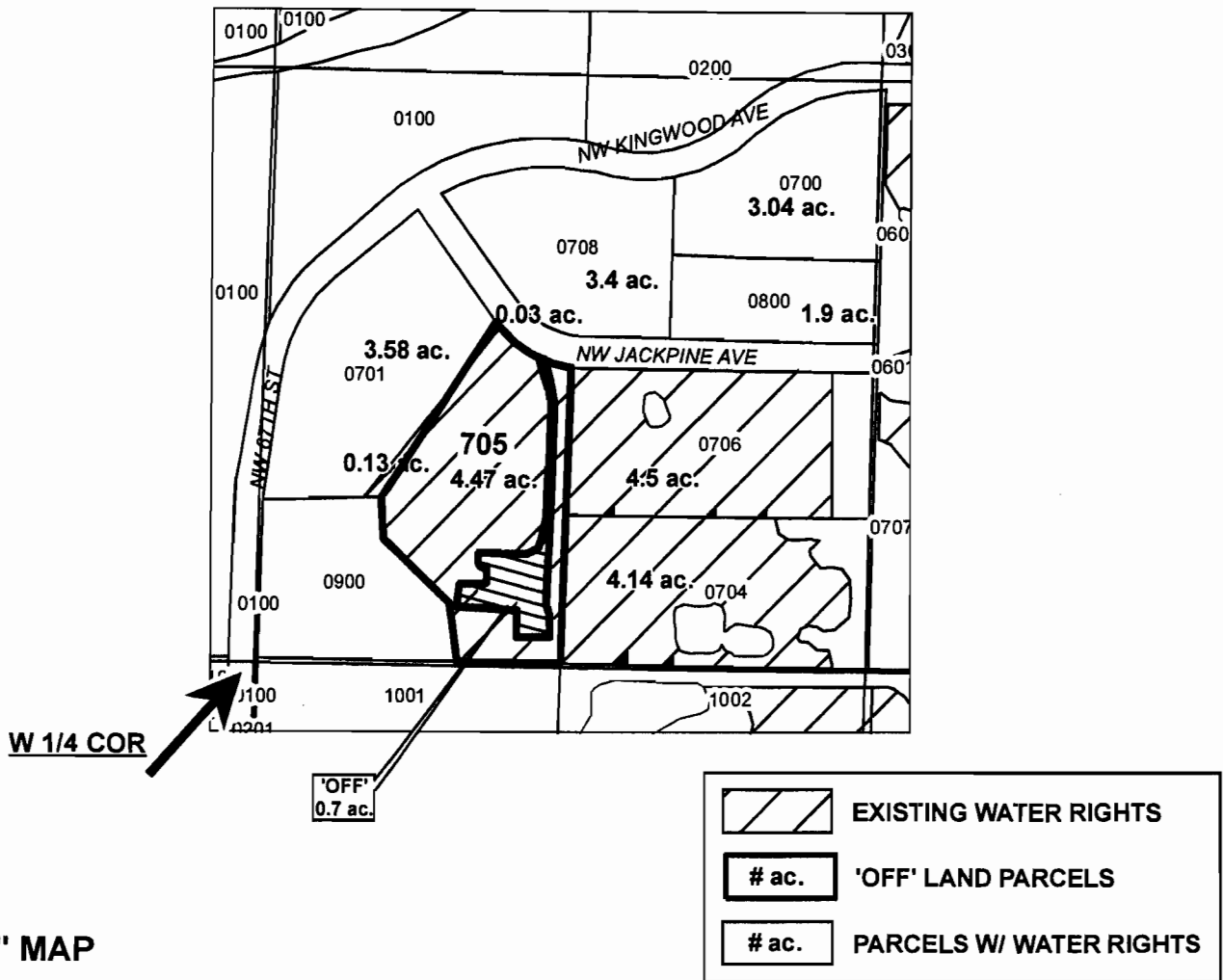
NOV 28 2008

WATER RESOURCES DEPT
SALEM, OREGON



SW 1/4 OF THE NW 1/4

DISTRICT INTERNAL
NOTICE #: T-2008-020



"OFF" MAP

CENTRAL OREGON



IRRIGATION DISTRICT

APPLICATION FOR WATER RIGHTS TRANSFER

COID / GREGORY P. & PHYLLIS HORN

TAXLOT #: 705

0.7 ACRES

DATE: 07-21-08

T 10747

FILE: E:\TRANSFER\WRTRANS08\COID_151212_705

DESCHUTES COUNTY SEC.12 T15S R12E

SCALE - 1" = 400'



NW 1/4 OF THE SE 1/4

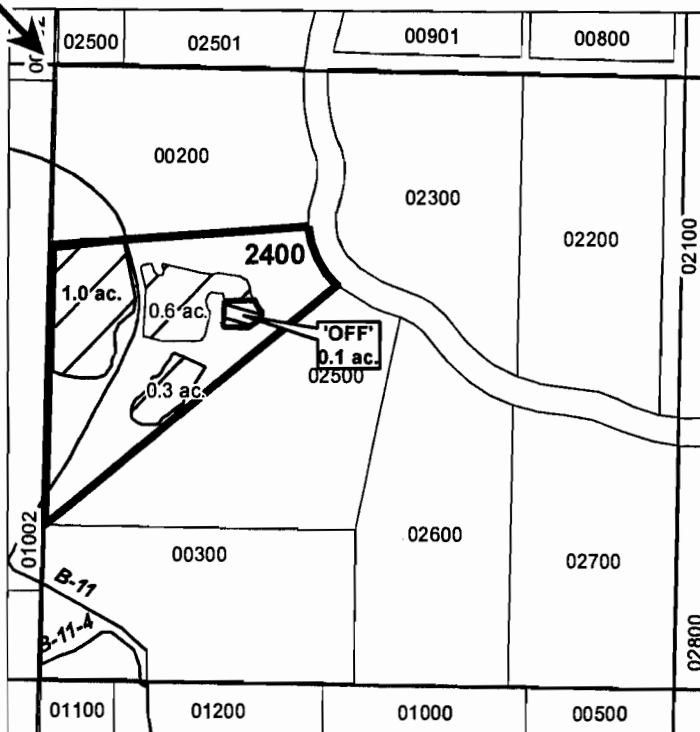
RECEIVED

NOV 28 2008



WATER RESOURCES DEPT
SALEM, OREGON

DISTRICT INTERNAL
NOTICE #: T-2008-016

C 1/4 COR



"OFF" MAP

	EXISTING WATER RIGHTS
	OFF LANDS



APPLICATION FOR WATER RIGHTS TRANSFER

COID / DON R. & JUDIE A. DUNN

TAXLOT #: 2400

0.1 ACRES

T 10741

DATE: 07-02-08

FILE: E:\TRANSFER\WR\TRANSORCOID_151212_2400

DESCHUTES COUNTY SEC.12 T15S R12E

SCALE - 1" = 400'



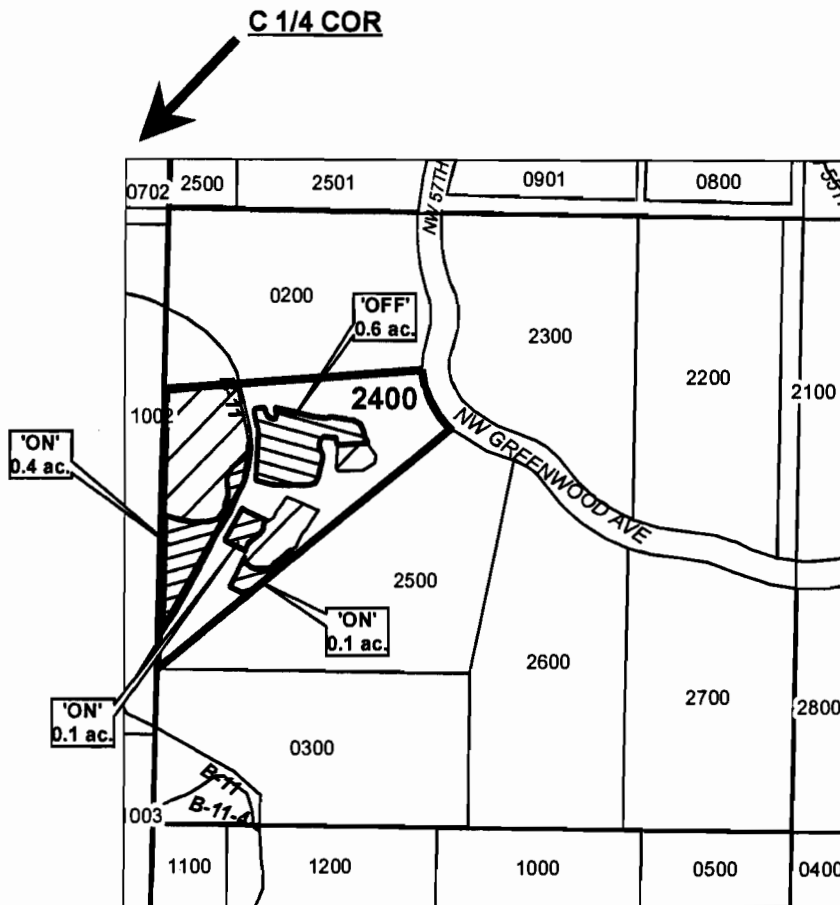
NW 1/4 OF THE SE 1/4

RECEIVED

NOV 28 2008

WATER RESOURCES DEPT
SALEM, OREGON

DISTRICT INTERNAL
NOTICE #: T-2008-009



	EXISTING WATER RIGHTS
	OFF LANDS
	ON LANDS

"OFF" / "ON" MAP



APPLICATION FOR WATER RIGHTS TRANSFER

JAMES L. & CINDI L. SMITH / JAMES L. & CINDI L. SMITH

TAXLOT #: 2400

0.6 ACRES

DATE: 03-31-08

T 10741

FILE: E:\TRANSFER\WRTRANS08\SMITH_J

DESCHUTES COUNTY SEC.12 T15S R12E

RECEIVED

NOV 28 2008

WATER RESOURCES DEPT
SALEM, OREGON

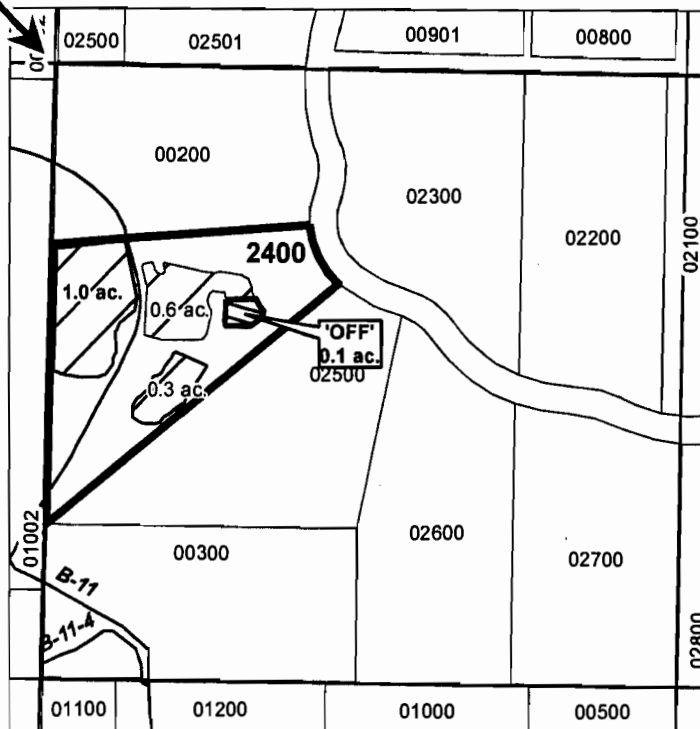
SCALE - 1" = 400'



NW 1/4 OF THE SE 1/4

DISTRICT INTERNAL
NOTICE #: T-2008-016

C 1/4 COR



"OFF" MAP



APPLICATION FOR WATER RIGHTS TRANSFER

COID / DON R. & JUDIE A. DUNN

TAXLOT #: 2400

T 10741

0.1 ACRES

DATE: 07-02-08

FILE E:\TRANSFER\WRTRANS08\COID_151212_2400

DESCHUTES COUNTY SEC.11 T16S R12E

RECEIVED

NOV 28 2008

WATER RESOURCES DEPT
SALEM, OREGON

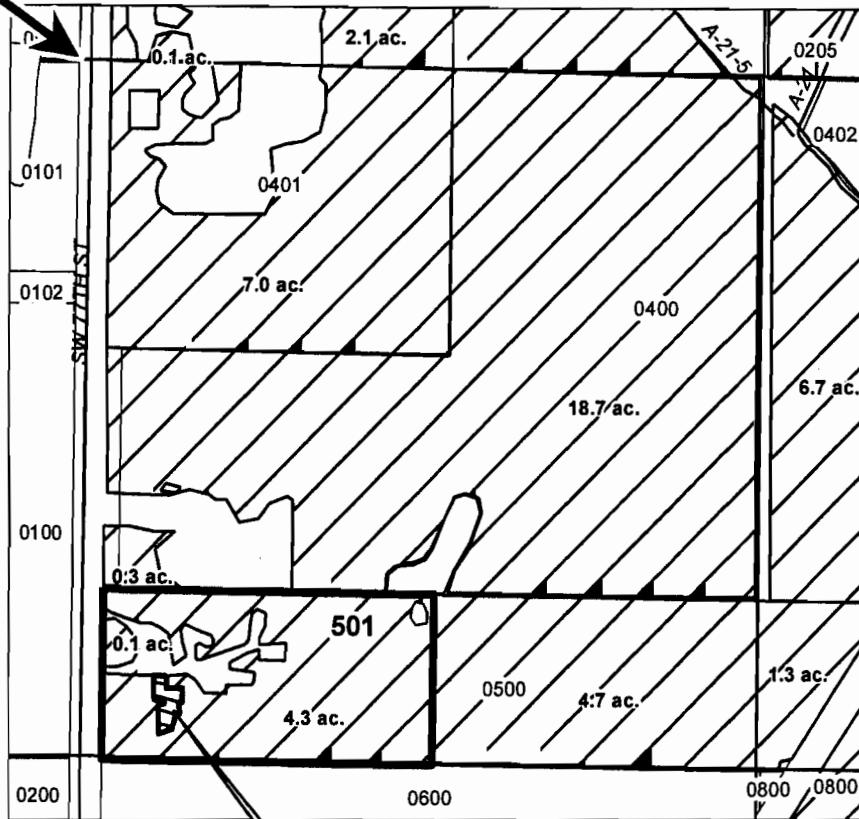
SCALE - 1" = 400'



NW 1/4 OF THE SW 1/4

DISTRICT INTERNAL
NOTICE #: T-2008-016

W 1/4 COR



'OFF'
0.1 ac.

	EXISTING WATER RIGHTS
	OFF LANDS

"OFF" MAP



APPLICATION FOR WATER RIGHTS TRANSFER

COID / DON R. & JUDIE A. DUNN

TAXLOT #: 501

T 10741

0.1 ACRES

DATE: 07-02-08

FILE: E:\TRANSFER\WRTRANS08\COID_161211_501

DESCHUTES COUNTY SEC.11 T17S R12E

SCALE - 1" = 400'



NW 1/4 OF THE NE 1/4

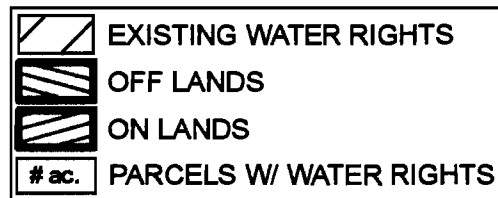
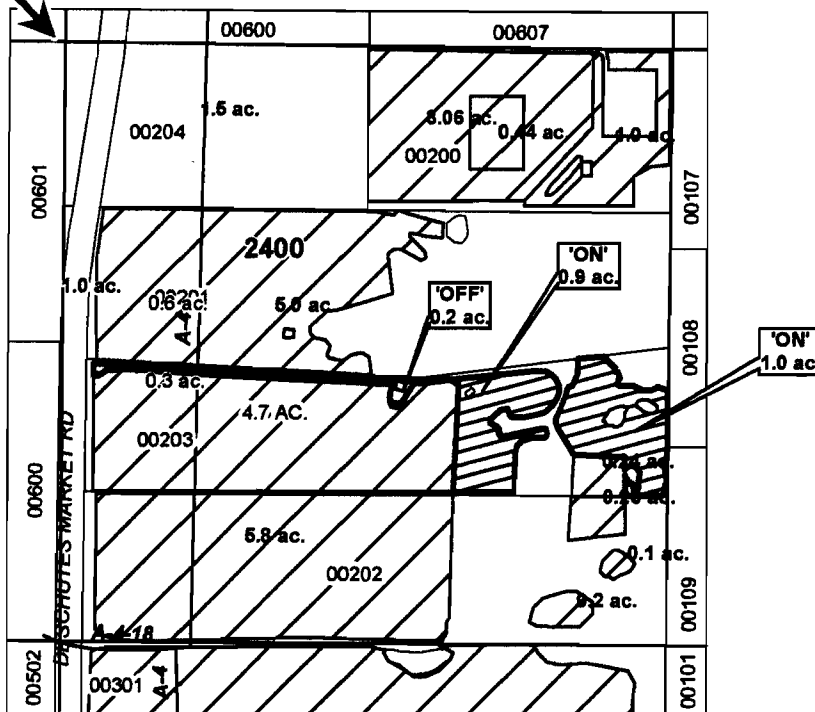
RECEIVED

NOV 28 2008

WATER RESOURCES DEPT
SALEM, OREGON

DISTRICT INTERNAL
NOTICE #: T-2008-020

N 1/4 COR



"OFF" / "ON" MAP



APPLICATION FOR WATER RIGHTS TRANSFER
COID / GREGORY P. & PHYLLIS HORN (1.7 AC.)
GREGORY P. & PHYLLIS HORN / GREGORY P. & PHYLLIS HORN (0.2 AC.)

TAXLOT #: 203

T 10741

1.9 ACRES

DATE: 07-21-08

FILE: E:\TRANSFER\WR\TRANSFER\HORN

DESCHUTES COUNTY SEC.21, 22 T17S R14E

RECEIVED

NOV 28 2008

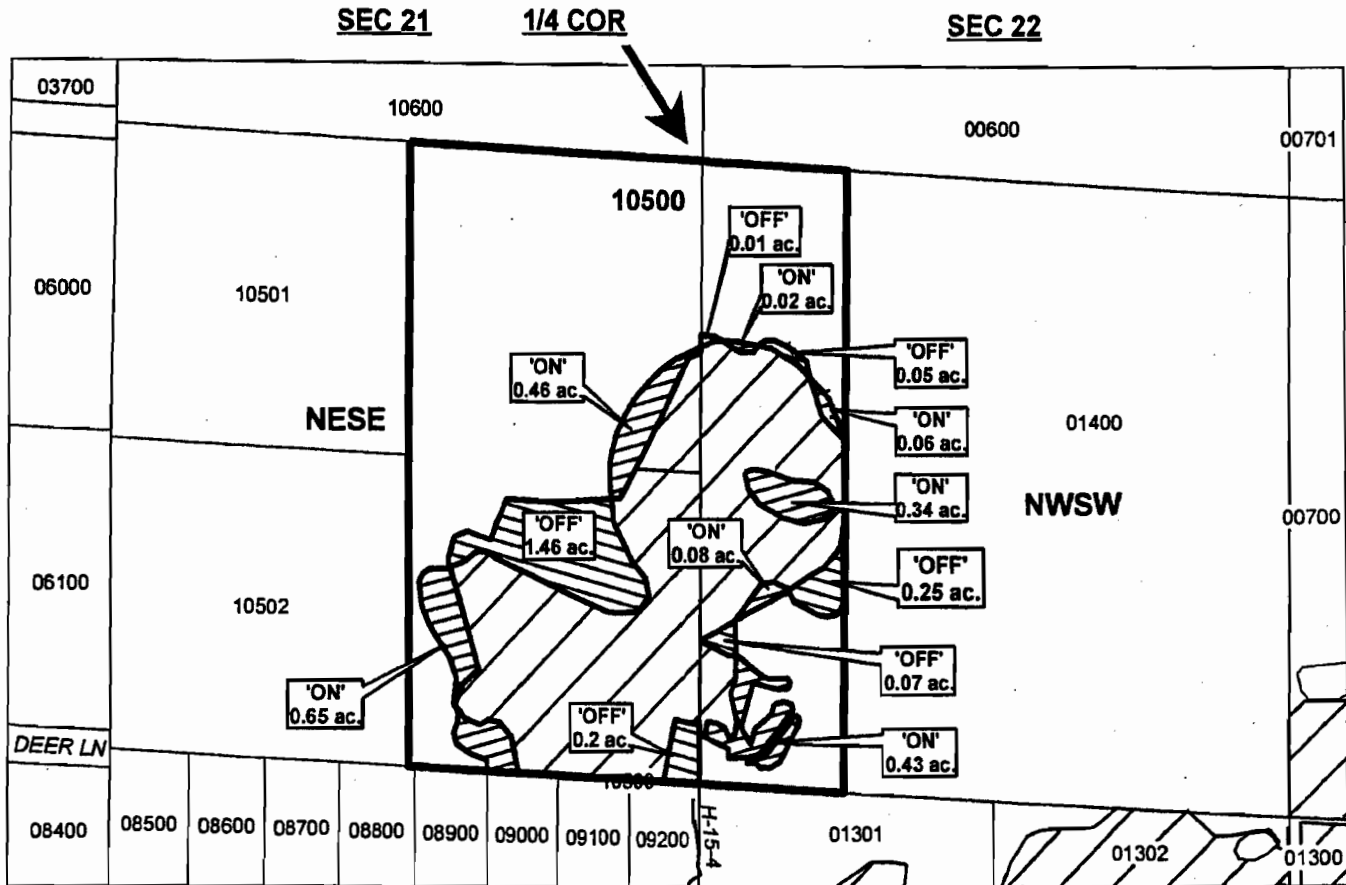
WATER RESOURCES DEPT
SALEM, OREGON

SCALE - 1" = 400'



NE 1/4 OF THE SE 1/4 (SEC 21) & NW 1/4 OF THE SW 1/4 (SEC 22)

DISTRICT INTERNAL
NOTICE #: T-2008-018



	EXISTING WATER RIGHTS
	OFF LANDS
	ON LANDS

"OFF / ON" MAP



APPLICATION FOR WATER RIGHTS TRANSFER

ZAC W. & TECKLA A. FOXHOVEN / ZAC W. & TECKLA A. FOXHOVEN

TAXLOT #: 10500

DATE: 09-23-08

T 10741

2.04 ACRES

FILE: E:\TRANSFER\WRTRANS08\FOXHOVEN

DESCHUTES COUNTY
SEC.01 T18S R13E

RECEIVED

SCALE - 1" = 400'

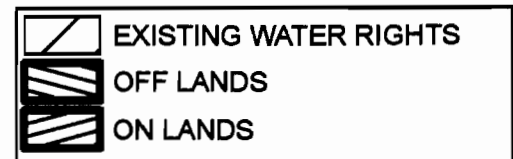
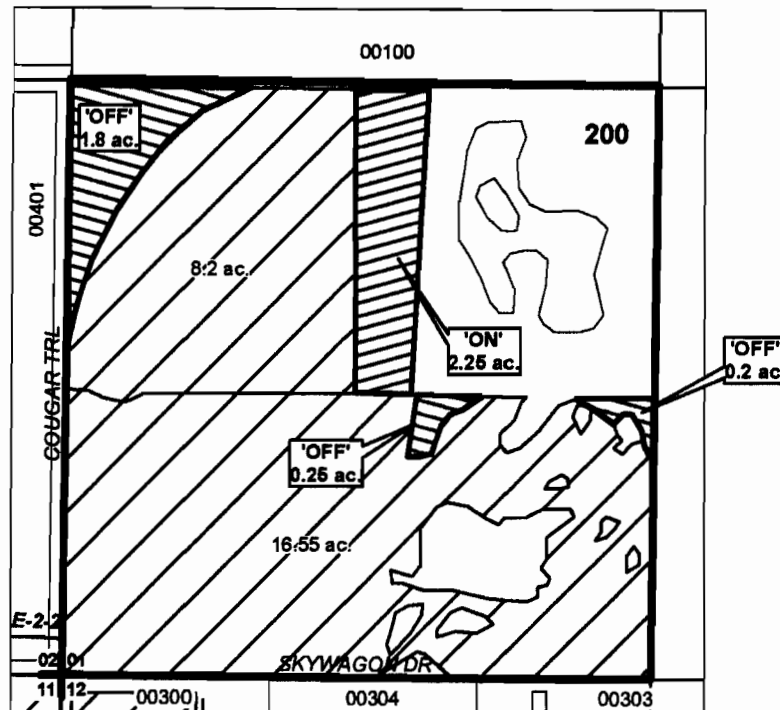
NOV 28 2008



WATER RESOURCES DEPT
SALEM, OREGON

SW 1/4 OF THE SW 1/4

DISTRICT INTERNAL
NOTICE #: T-2008-019



"OFF" / "ON" MAP



APPLICATION FOR WATER RIGHTS TRANSFER

SCOTT GOODRICH / SCOTT GOODRICH

TAXLOT #: 200

2.25 ACRES

DATE: 08-11-08

T 10741

FILE: E:\TRANSFER\WTR\TRANS\GOOODRICH

DESCHUTES COUNTY SEC.10, 11 T18S R13E

RECEIVED

NOV 28 2008

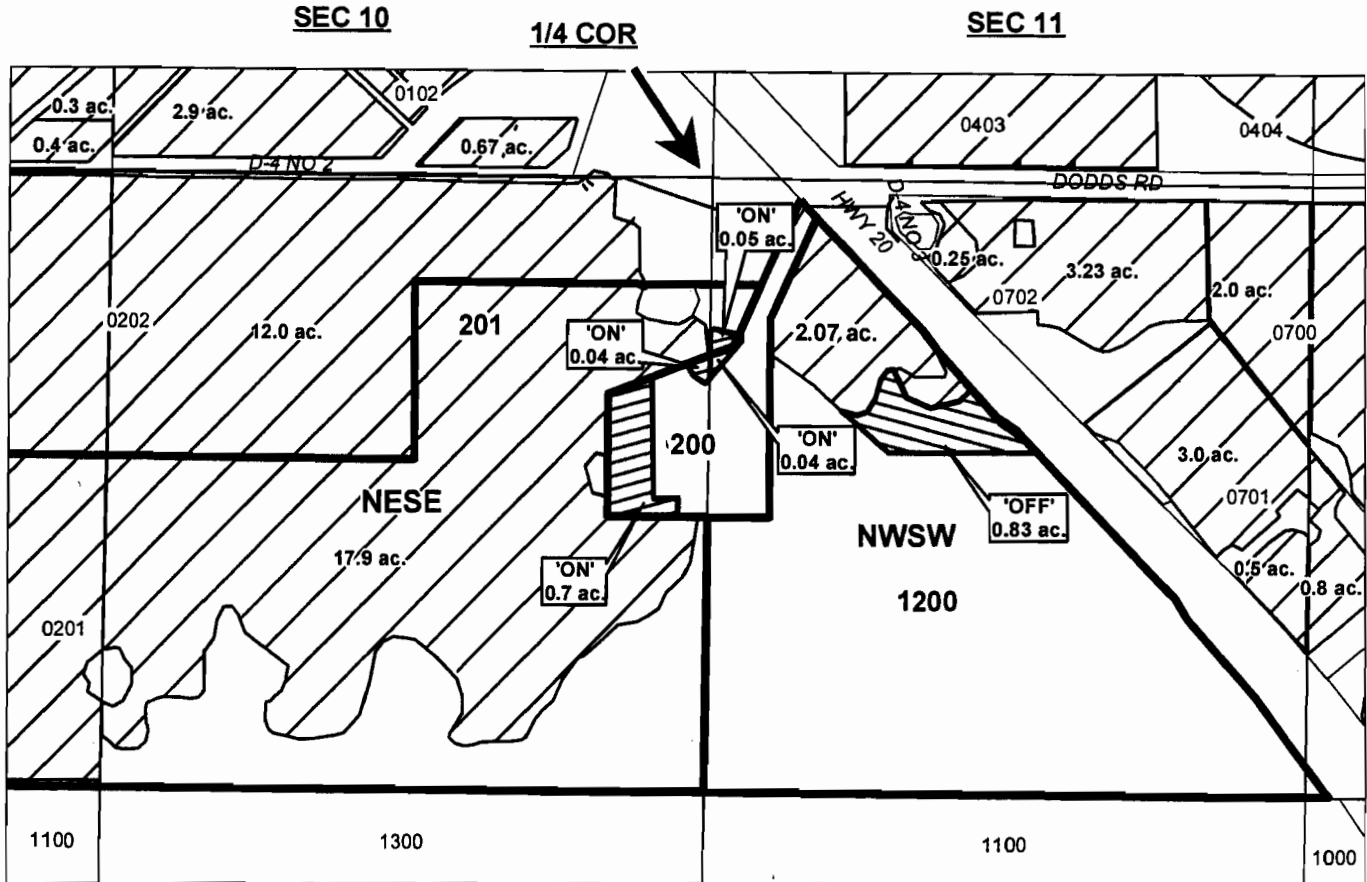
WATER RESOURCES DEPT
SALEM, OREGON

SCALE - 1" = 400'



NE 1/4 OF THE SE 1/4 (SEC. 10) ; NW 1/4 OF THE SW 1/4 (SEC 11)

DISTRICT INTERNAL
NOTICE #: T-2008-015



	EXISTING WATER RIGHTS
	OFF LANDS
	ON LANDS

"OFF / ON" MAP



APPLICATION FOR WATER RIGHTS TRANSFER

WILLIAM & COLLEEN FAULKNER / WILLIAM & COLLEEN FAULKNER

TAXLOT #: 200, 201, 1200 T 10741

0.83 ACRES

DATE: 07-28-08

FILE: E:\TRANSFER\WR\TRANS08\FAULKNER

DESCHUTES COUNTY SEC.24 T14S R13E

SCALE - 1" = 400'



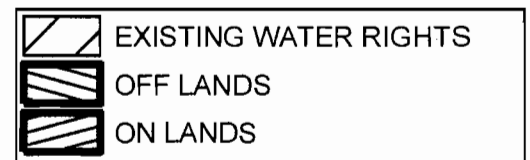
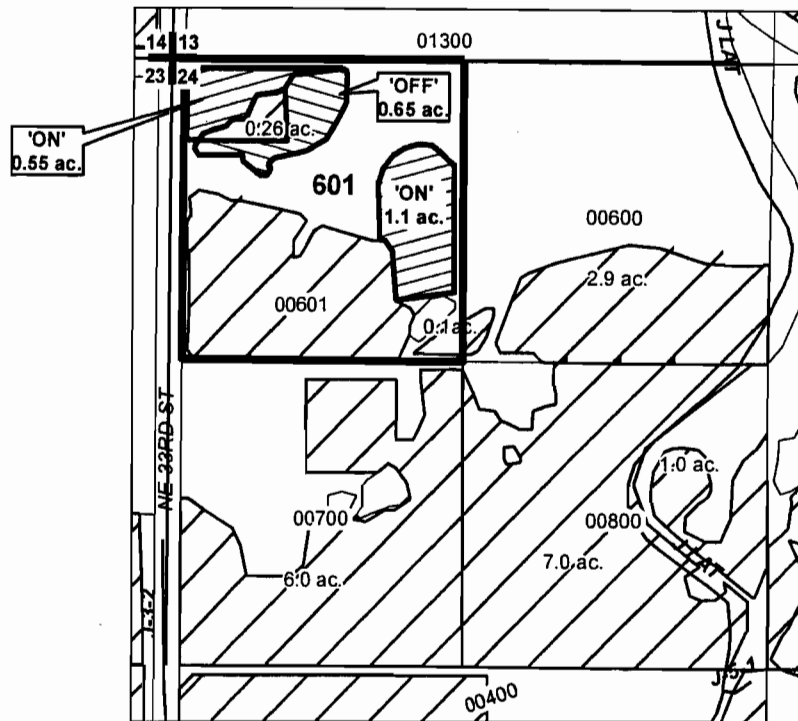
NW 1/4 OF THE NW 1/4

RECEIVED

NOV 28 2008

WATER RESOURCES DEPT
SALEM, OREGON

DISTRICT INTERNAL
NOTICE #: T-2008-016



"OFF" / "ON" MAP



APPLICATION FOR WATER RIGHTS TRANSFER
DON R. & JUDIE A. DUNN / DON R. & JUDIE A. DUNN (0.55)
COID / DON R. & JUDIE A. DUNN (1.0)

TAXLOT #:601

1.65 ACRES

DATE: 07-02-08

T 10741

FILE: E:TRANSFER\WRTRANS08\DUNN

DESCHUTES COUNTY SEC.12 T15S R12E

SCALE - 1" = 400'

RECEIVED

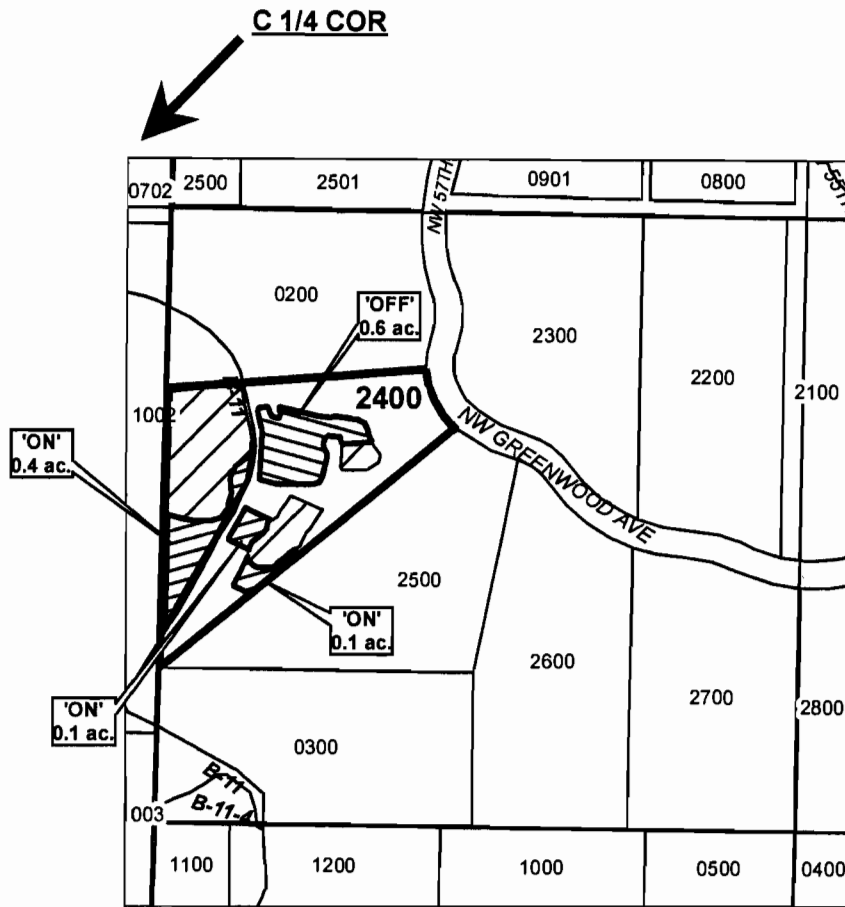
NOV 28 2008

WATER RESOURCES DEPT
SALEM, OREGON



NW 1/4 OF THE SE 1/4

DISTRICT INTERNAL
NOTICE #: T-2008-009



"OFF" / "ON" MAP

	EXISTING WATER RIGHTS
	OFF LANDS
	ON LANDS



APPLICATION FOR WATER RIGHTS TRANSFER

JAMES L. & CINDI L. SMITH / JAMES L. & CINDI L. SMITH

TAXLOT #: 2400

0.6 ACRES

DATE: 03-31-08

T 10741

FILE: E:\TRANSFER\WR\TRANS08\SMITH_J

DESCHUTES COUNTY SEC.11 T17S R12E

SCALE - 1" = 400'

RECEIVED

NOV 28 2008

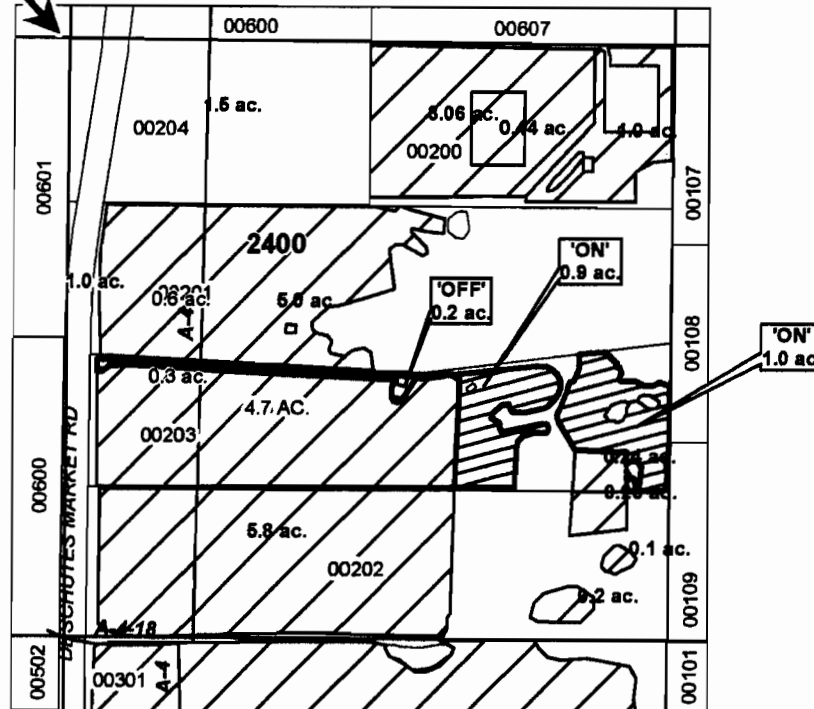
WATER RESOURCES DEPT
SALEM, OREGON



NW 1/4 OF THE NE 1/4

DISTRICT INTERNAL
NOTICE #: T-2008-020

N 1/4 COR



"OFF" / "ON" MAP

	EXISTING WATER RIGHTS
	OFF LANDS
	ON LANDS
	PARCELS W/ WATER RIGHTS



APPLICATION FOR WATER RIGHTS TRANSFER
COID / GREGORY P. & PHYLLIS HORN (1.7 AC.)
GREGORY P. & PHYLLIS HORN / GREGORY P. & PHYLLIS HORN (0.2 AC.)

TAXLOT #: 203

1.9 ACRES

DATE: 07-21-08

FILE: E:\TRANSFER\WATER\TRANS08\HORN

T 10741

DESCHUTES COUNTY SEC.21, 22 T17S R14E

RECEIVED

SCALE - 1" = 400'

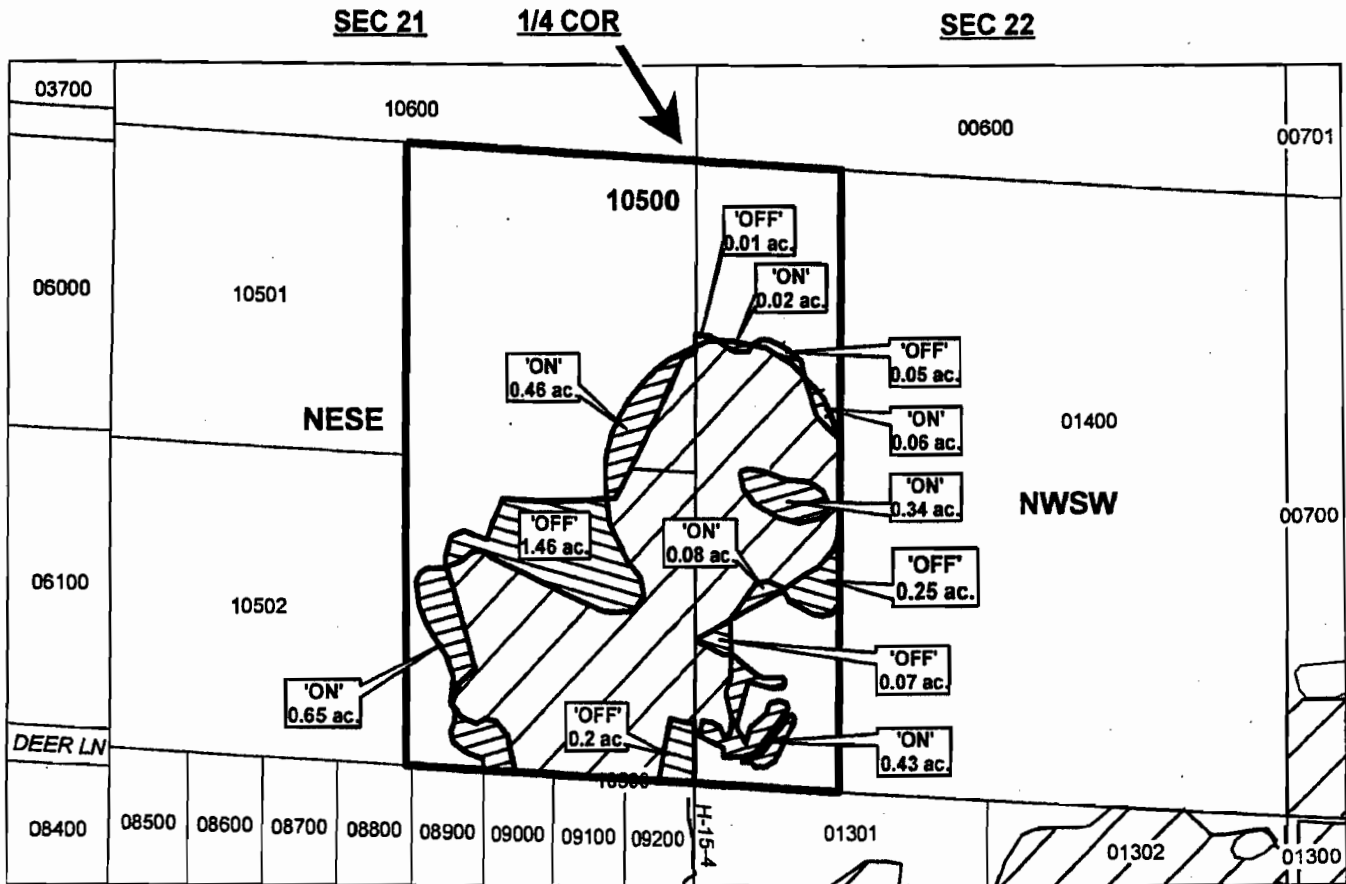
NOV 28 2008

WATER RESOURCES DEPT
SALEM, OREGON

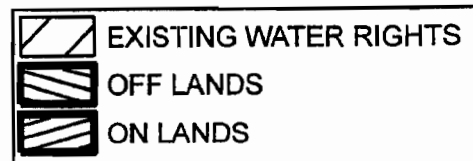


NE 1/4 OF THE SE 1/4 (SEC 21) & NW 1/4 OF THE SW 1/4 (SEC 22)

DISTRICT INTERNAL
NOTICE #: T-2008-018



"OFF / ON" MAP



CENTRAL OREGON



IRRIGATION DISTRICT

APPLICATION FOR WATER RIGHTS TRANSFER

ZAC W. & TECKLA A. FOXHOVEN / ZAC W. & TECKLA A. FOXHOVEN

TAXLOT #: 10500 T 10741

2.04 ACRES

DATE: 09-23-08

FILE: E:\TRANSFER\WRTRANS08\FOXHOVEN

DESCHUTES COUNTY SEC.01 T18S R13E

RECEIVED

SCALE - 1" = 400'

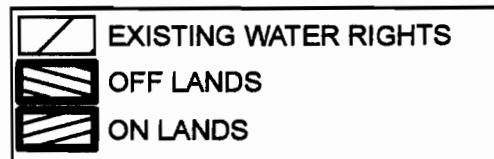
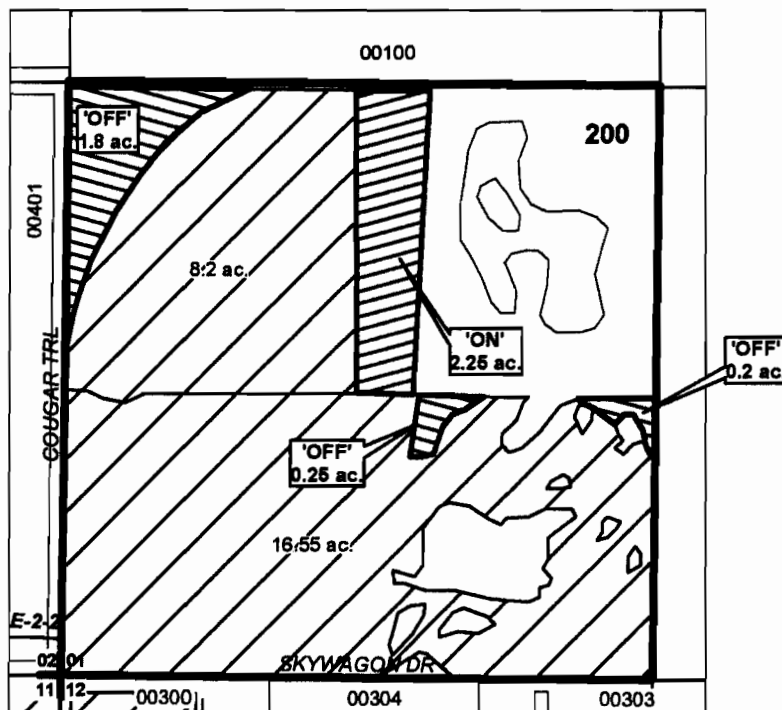
NOV 28 2008



WATER RESOURCES DEPT
SALEM, OREGON

SW 1/4 OF THE SW 1/4

DISTRICT INTERNAL
NOTICE #: T-2008-019



"OFF" / "ON" MAP



APPLICATION FOR WATER RIGHTS TRANSFER

SCOTT GOODRICH / SCOTT GOODRICH

TAXLOT #: 200

T 10741

2.25 ACRES

DATE: 08-11-08

FILE: E:\TRANSFER\WR\TRANSFER\GOODRICH

DESCHUTES COUNTY SEC.10, 11 T18S R13E

RECEIVED

NOV 28 2008

WATER RESOURCES DEPT
SALEM, OREGON

SCALE - 1" = 400'



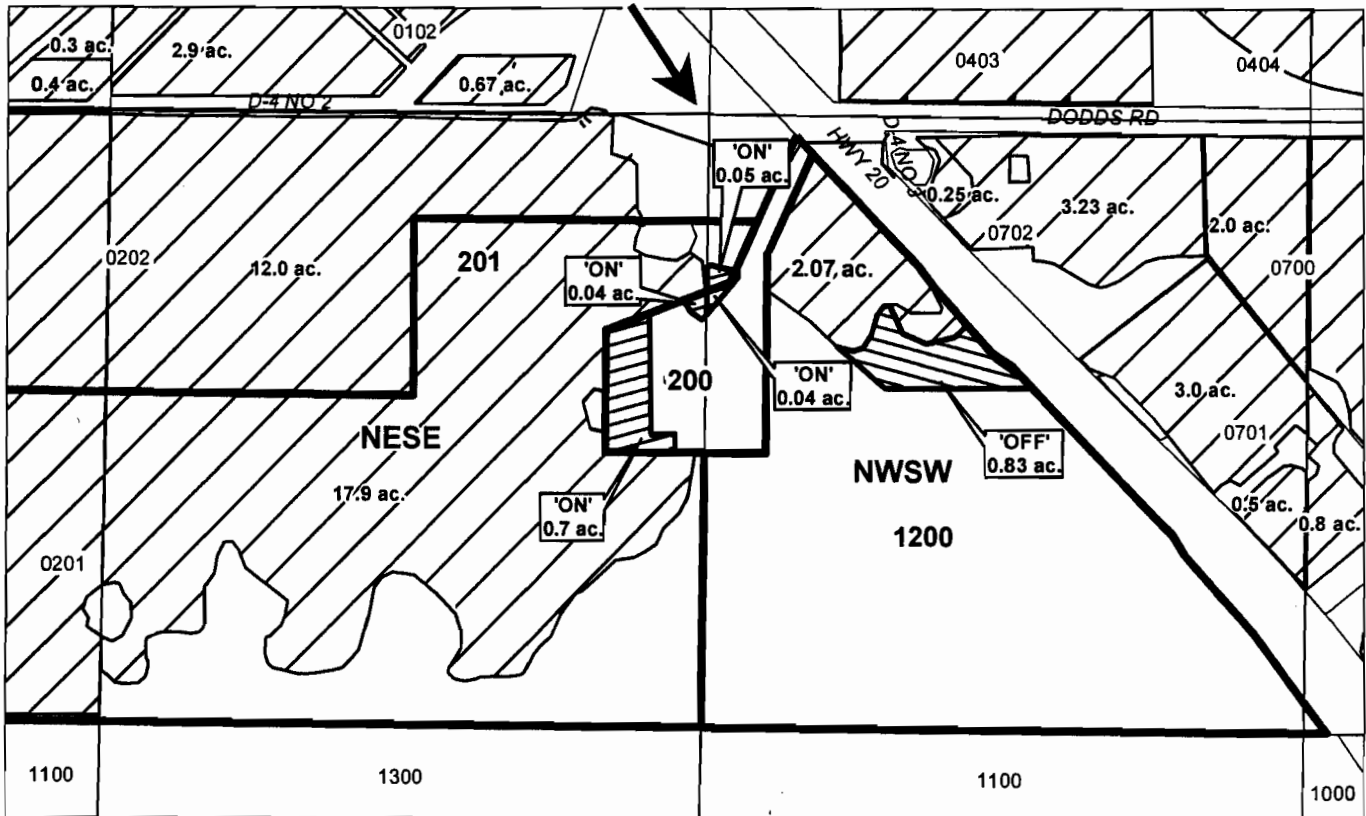
NE 1/4 OF THE SE 1/4 (SEC. 10) ; NW 1/4 OF THE SW 1/4 (SEC 11)

DISTRICT INTERNAL
NOTICE #: T-2008-015

SEC 10

1/4 COR

SEC 11



"OFF / ON" MAP

	EXISTING WATER RIGHTS
	OFF LANDS
	ON LANDS



APPLICATION FOR WATER RIGHTS TRANSFER

WILLIAM & COLLEEN FAULKNER / WILLIAM & COLLEEN FAULKNER

TAXLOT #: 200, 201, 1200 ; 10741

0.83 ACRES

DATE: 07-28-08

FILE: E:\TRANSFER\WR\TRANS08\FAULKNER