







T 10746

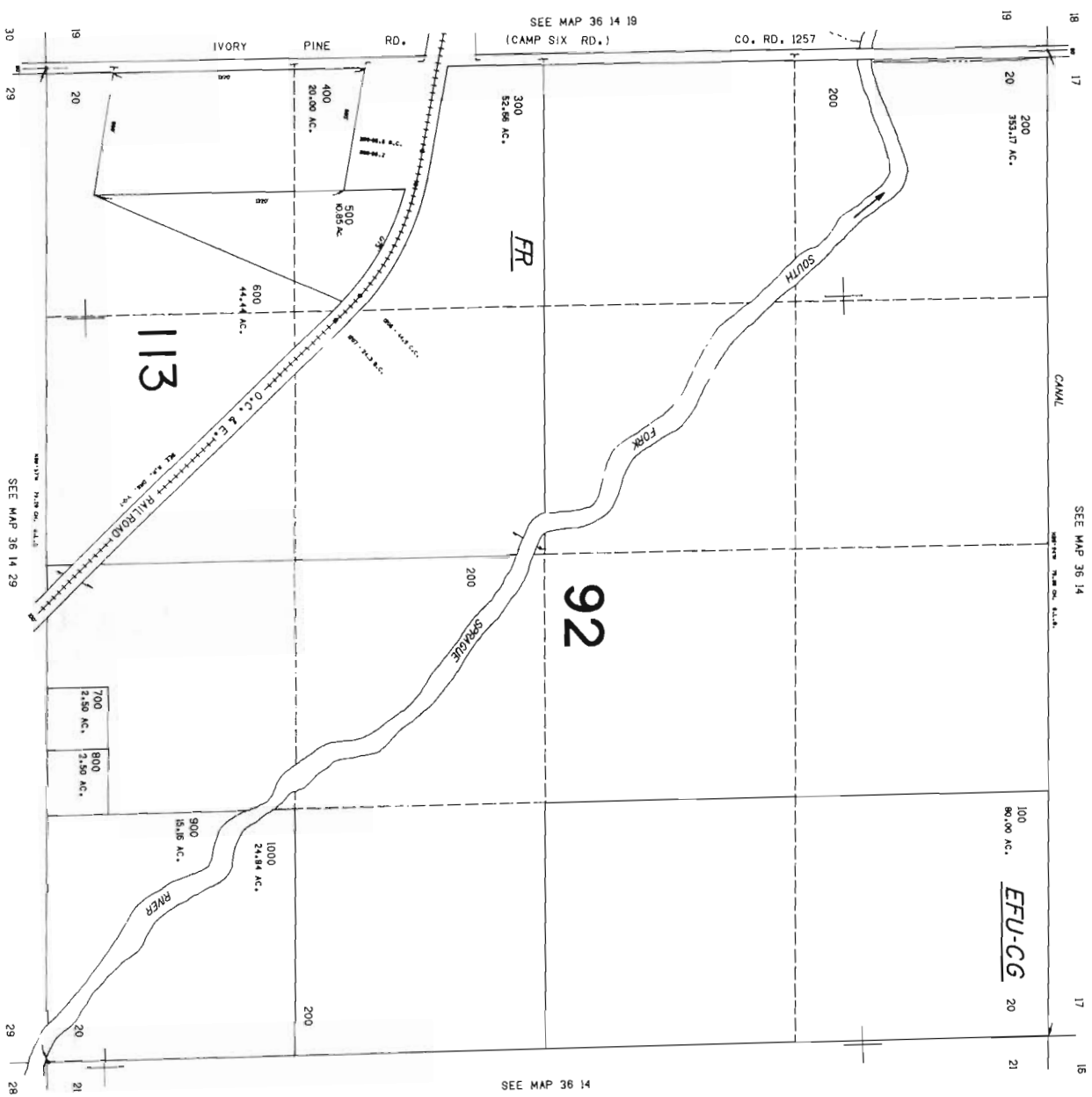
DEC 08 2008

WATER RESOURCES DEPT  
 SALEM, OREGON

THIS MAP WAS PREPARED FOR ASSESSMENT PURPOSE ONLY.

KLAMATH COUNTY

1"=400'



RECEIVED

DEC 08 2008

WATER RESOURCES DEPT  
SALEM, OREGON

T 10746

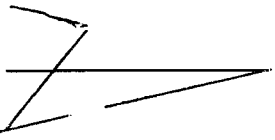
36 14 20



*Edmond S. Bradley*

10746

29



WATER RESOURCES DEPT  
SALEM, OREGON

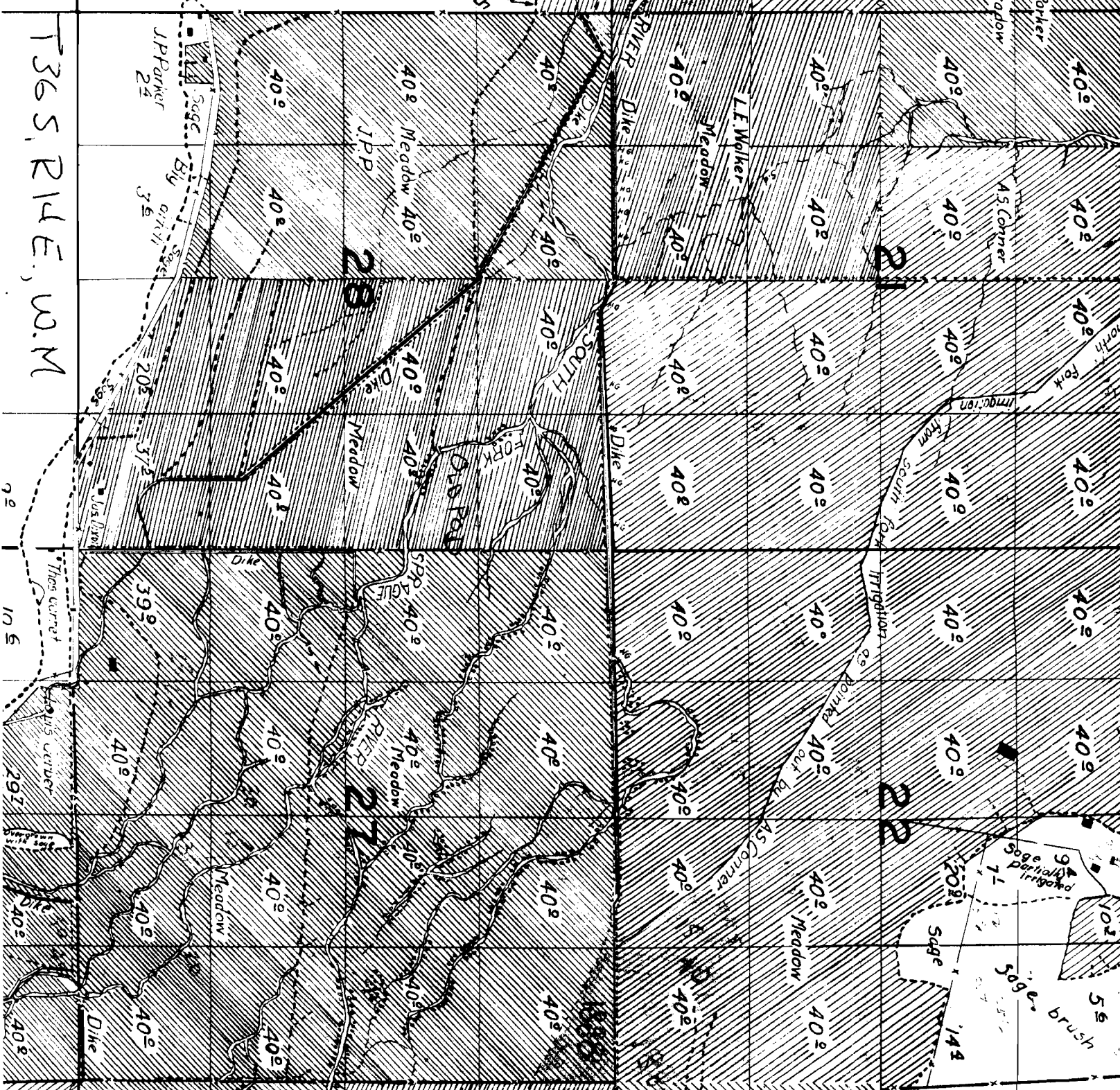
DEC 08 2008

RECEIVED

GW Morgan

Trace of ditch

1365, R14E, W.3M



92

105

297

405

405