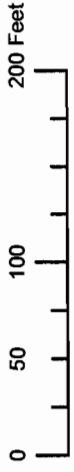


NE 1/4 NW 1/4 SECTION 26 T02N R10E WM
HOOD RIVER COUNTY

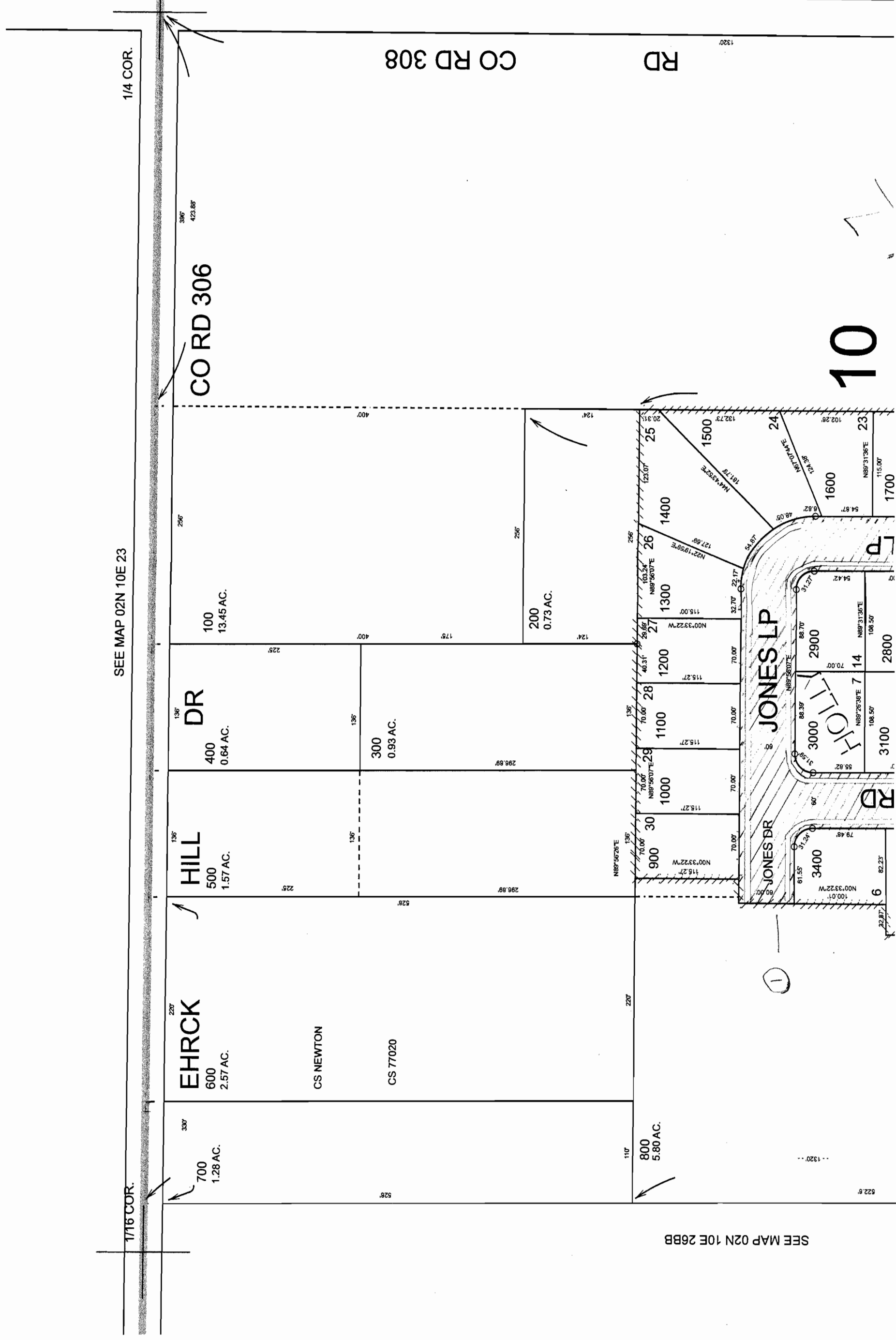
02N 10E

CANCEL

MAP PREPARED FOR
PLANNING PURPOSE ONLY



1" = 100'



1/4 COR.

SEE MAP 02N 10E 23

1/16 COR.



SEE MAP 02N 10E 26BB

SEE MAP 02N 10E 26

RECEIVED
DEC 11 2008
WATER RESOURCES DEPT
SALEM, OREGON

1107780

10

Map Legend
Man Symbols

SE1/4 SECTION 22 T.2N. R.10E. W.M.
HOOD RIVER COUNTY

1"=100'

THIS MAP WAS PREPARED FOR
ASSESSMENT PURPOSE ONLY

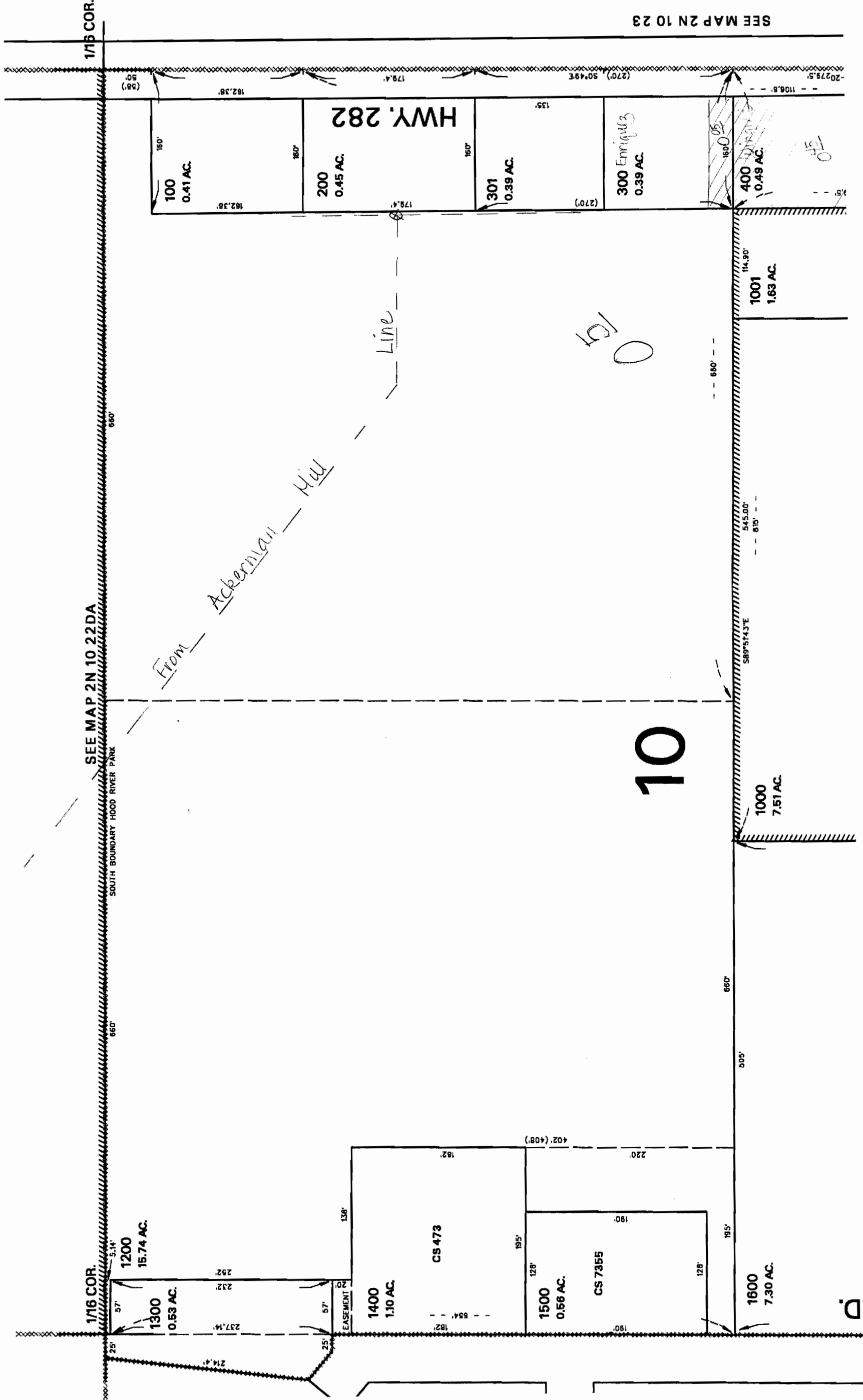
2N 10 22DI

CANCELLED
600
1100
1501

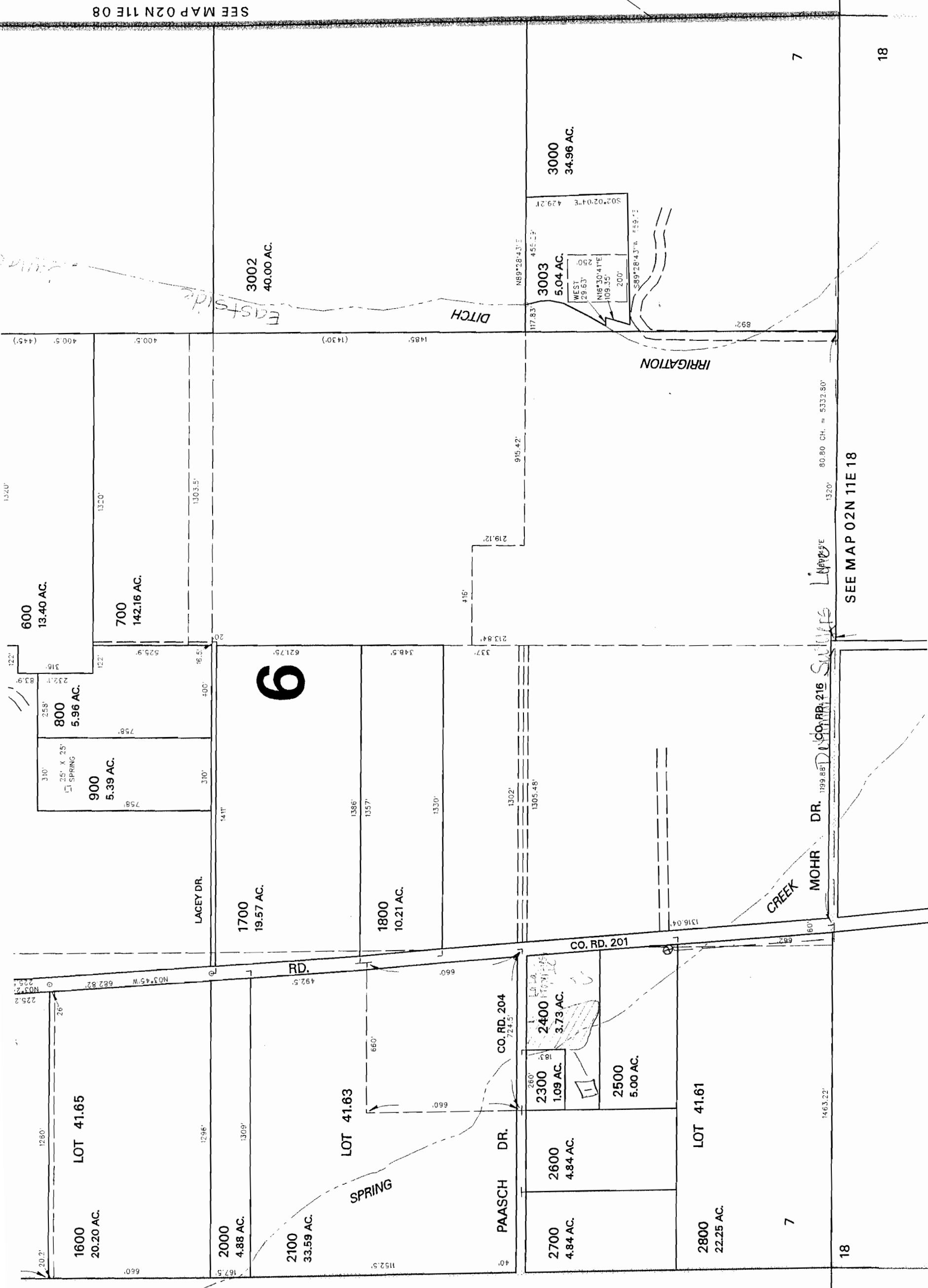
RECEIVED

DEC 1 1 2008

WATER RESOURCES DEPT
SALEM, OREGON



SEE MAP 02N



Map Legend	
Map Symbols	⊗ Valve
---	Pipeline
---	Property Line
Water Right Certificate	
C-81340	
①	Transfer To
②	Transfer From
East Fork Irrigation District	
Hood River, Oregon	
Section 2N-11E-07	
Scale 1" = 400' cms	

RECEIVED

DEC 11 2008

WATER RESOURCES DEPT
SALEM, OREGON

REVISED: JD
02/24/03

02N 11E 07

2

3

7

18

7

18

7

18

7

18

7

18

7

18

7

18

7

18

7

18

7

18

7

18

7

18

7

18

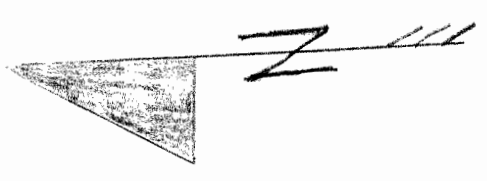
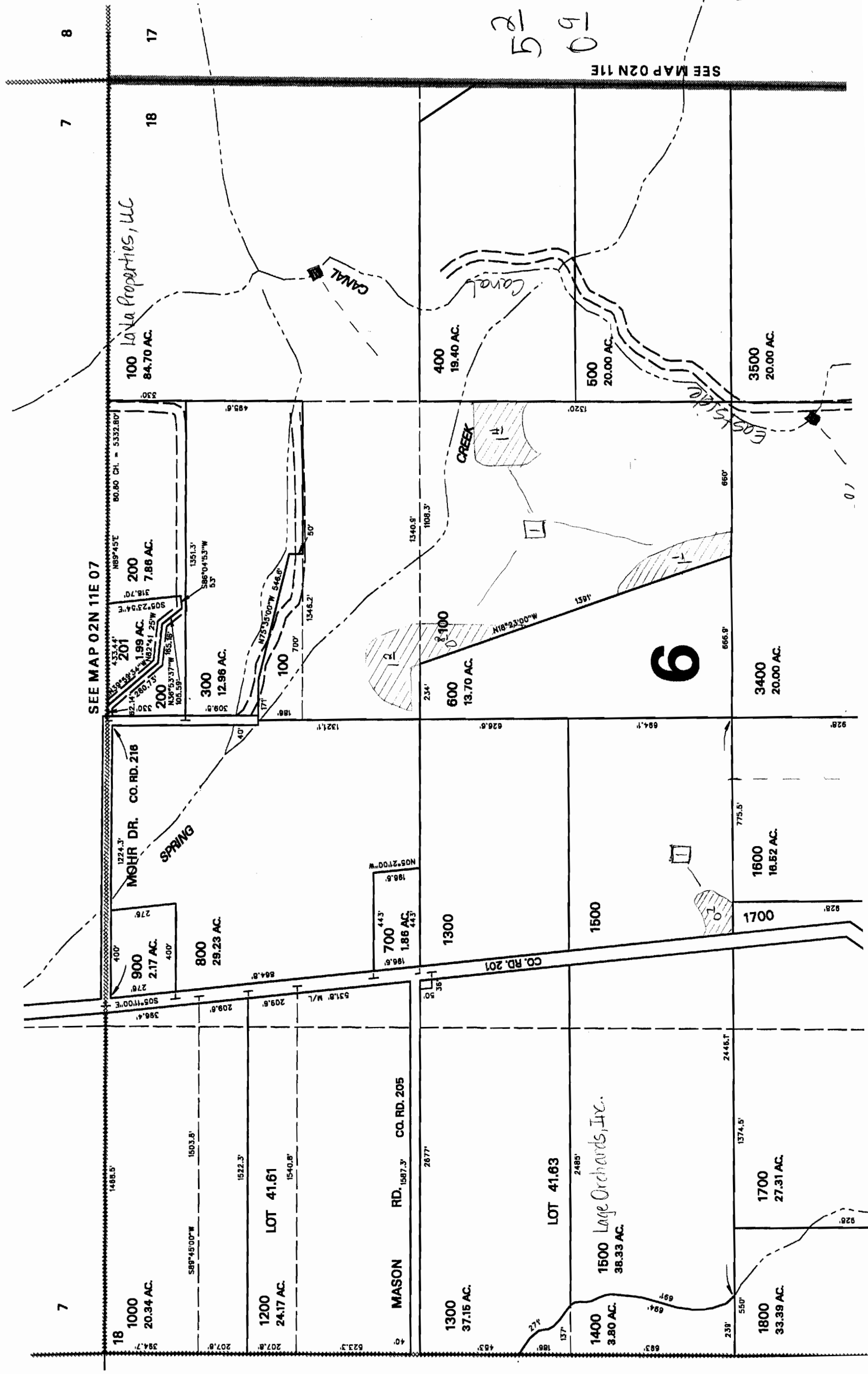
SECTION 18 T.02N. R.11E. W.M.
HOOD RIVER COUNTY

02N 11E 18

CANCELLED NO.
1100
2500

THIS MAP WAS PREPARED FOR
ASSESSMENT PURPOSE ONLY

1" = 400'



5² transfer to
09 transfer from

RECEIVED

DEC 1 1 2008
WATER RESOURCES DEPT
SALEM, OREGON

SEE MAP 02N 11E

SEE MAP 02N 11E 07

RECEIVED

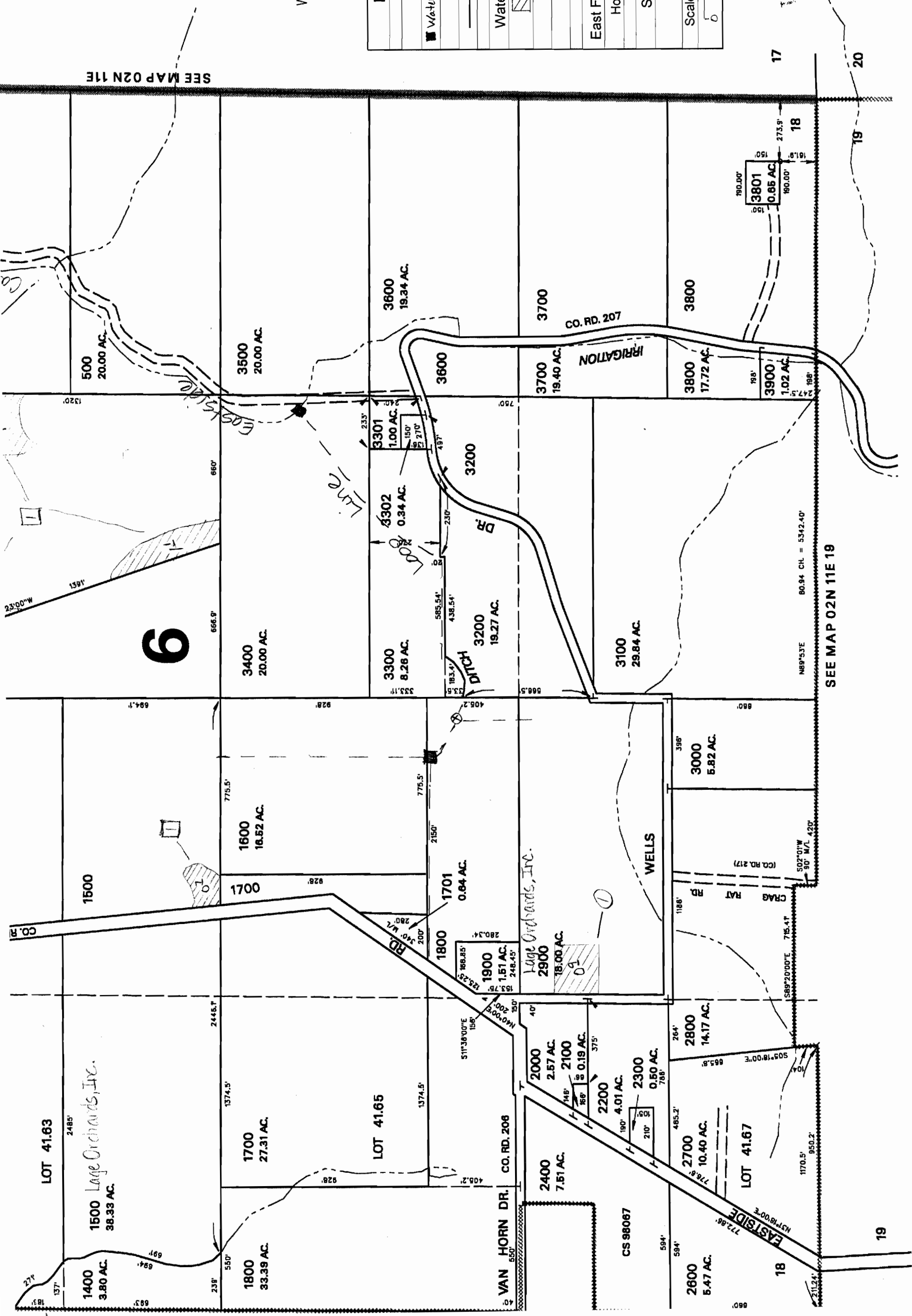
DEC 11 2008

WATER RESOURCES DEPT
SALEM, OREGON

Map Legend	
Map Symbols	
Water box	⊗ Valve
---	Pipeline
---	Property Line
Water Right Certificate	
	C-81340
	Transfer To
	Transfer From
East Fork Irrigation District	
Hood River, Oregon	
Section 2N-11E-18	
Scale 1" = 400' cms	

REVISED: JD
02/25/03

02N 11E 18



SEE MAP 02N 11E

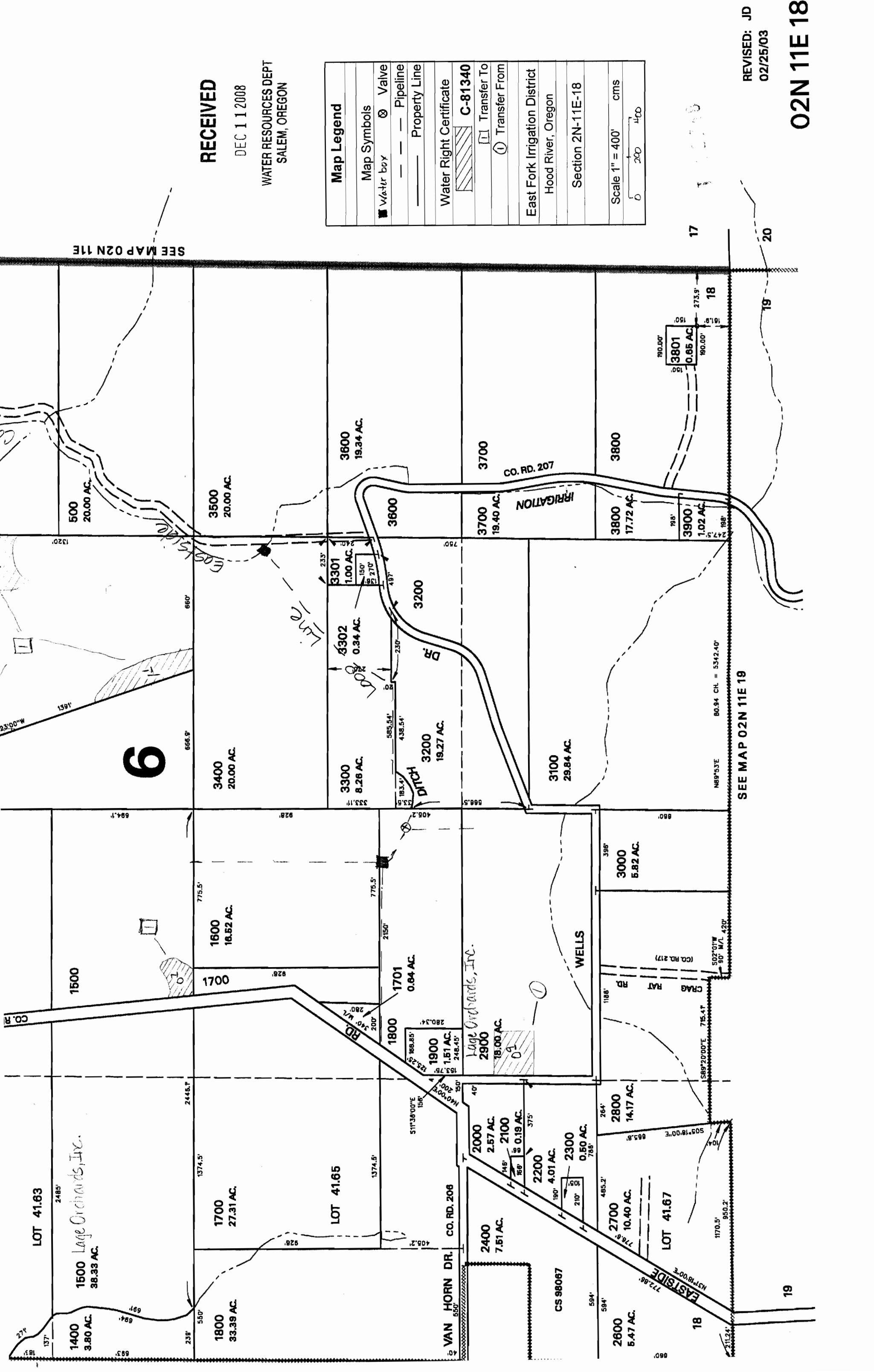
SEE MAP 02N 11E 19

6

19

17

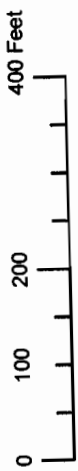
20



02N 10E 25 B

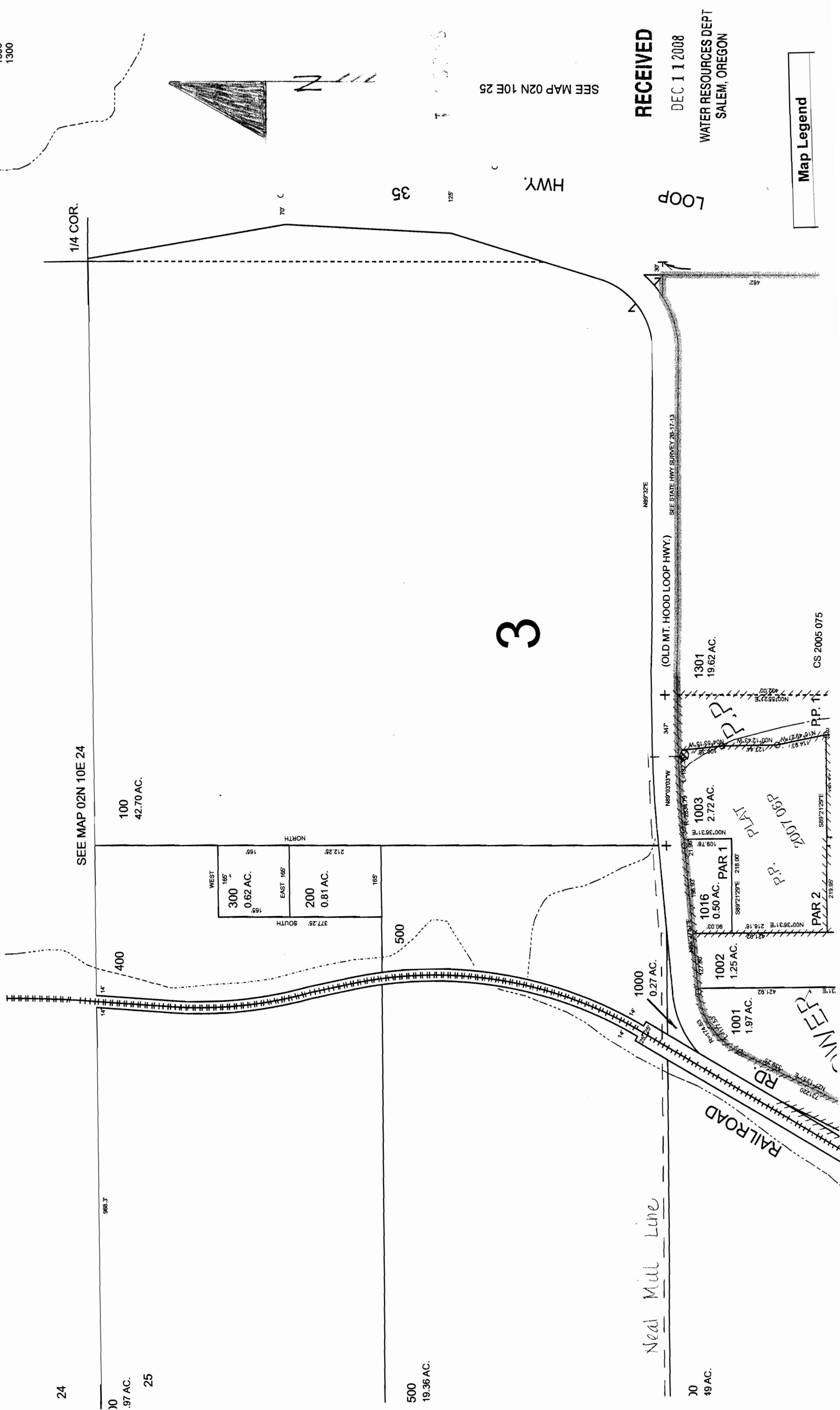
NW 1/4 SECTION 25 T02N R10E WM
HOOD RIVER COUNTY

1" = 200'



D FOR ONLY

CANCELLED NOS.
1400
1500
1200
1303
1300



SEE MAP 02N 10E 24

1/4 COR.

100
42.70 AC.

30
.97 AC.
25

WEST 165°		EAST 165°	
300 0.62 AC.	200 0.81 AC.	165°	165°
SOUTH 377.25'		NORTH 212.25'	

500
19.36 AC.

3

SEE MAP 02N 10E 25

RECEIVED

DEC 11 2008

WATER RESOURCES DEPT
SALEM, OREGON

Map Legend

Neal Mill Line

30
49 AC.

CS 2005 075

02N 10E 24

ED FOR
ONLY

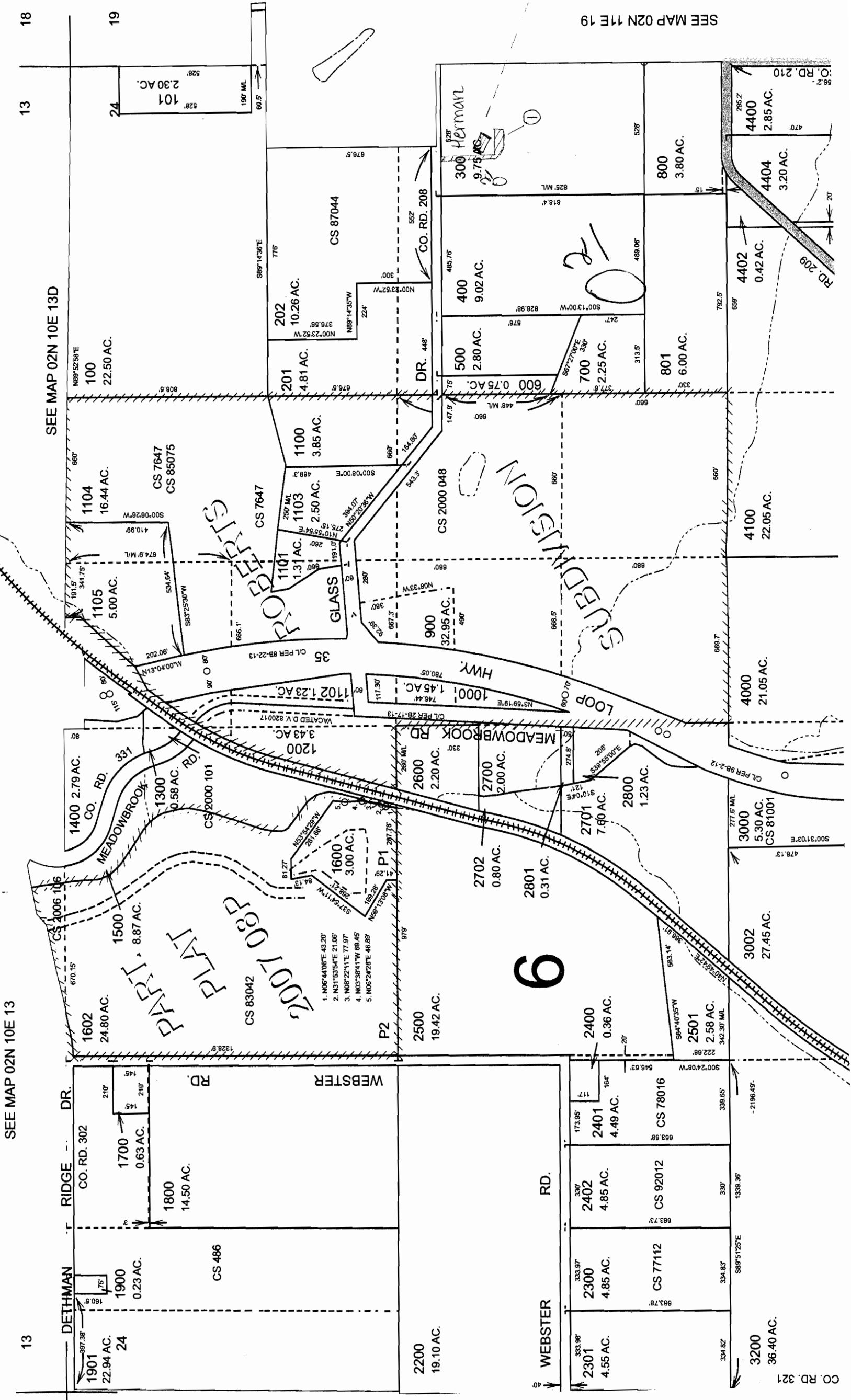
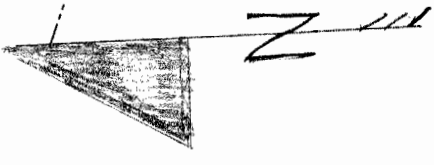


SECTION 24 T02N R10E WM
HOOD RIVER COUNTY

1" = 400'

CANCELLED NOS.

- 200
- 2000
- 2100
- 2790
- 2890
- 2900
- 3502
- 4200
- 100
- 900
- 300
- 500
- 700
- 800
- 801
- 600
- 4000
- 4100
- 1601



SEE MAP 02N 11E 19

SEE MAP 02N 10E 13

SEE MAP 02N 10E 13D

RECEIVED

DEC 11 2008

WATER RESOURCES DEPT
SALEM, OREGON

Cray Rat Line

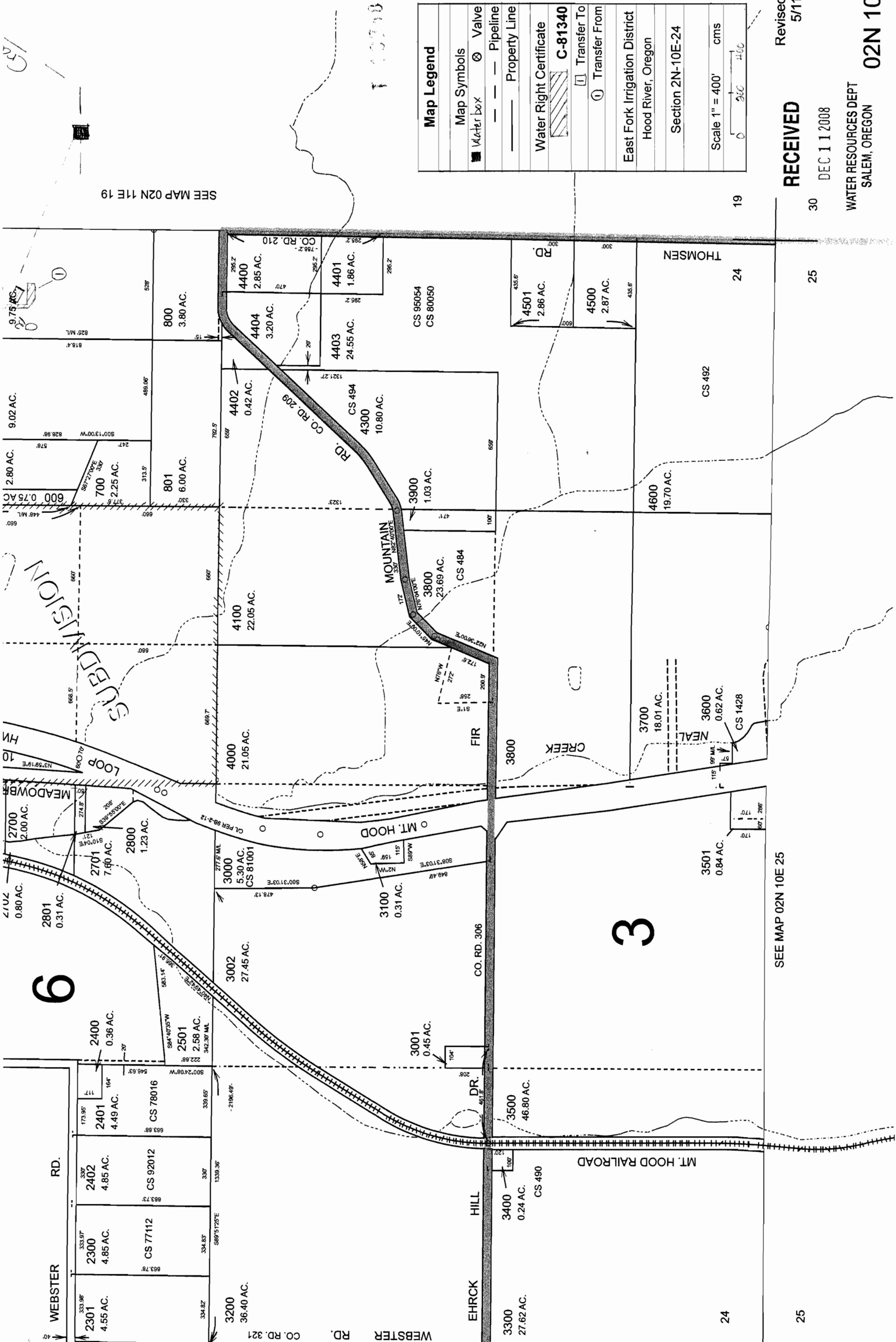
ROBERTS STREETS

SUBMISSION

PART 1
2007 0321 PLAT

6

CO. RD. 321



SEE MAP 02N 11E 19

SEE MAP 02N 10E 25

Map Legend	
Map Symbols	Water box
— — — — —	Pipeline
— — — — —	Property Line
Water Right Certificate	
	C-81340
	Transfer To
	Transfer From
East Fork Irrigation District	
Hood River, Oregon	
Section 2N-10E-24	
Scale 1" = 400' cms	

RECEIVED

Revised CMS
5/11/2007

DEC 11 2008

WATER RESOURCES DEPT
SALEM, OREGON

02N 10E 24

6

3

25

24

25

24

19