

**Township 2 South, Ranges 3 & 4 East (W.M.)**

**Application for a Permit Amendment**  
**Permit G-11134**

Iseli Nursery  
 Clackamas County, Oregon

**LEGEND**

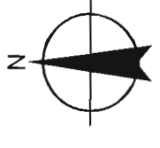
- Existing and Proposed Additional Points of Appropriation (POA) for Permit G-11134
- ▨ Proposed Place of Use (POU) for Permit G-11134
- ⊕ Tax Lots (Tax lots owned by permit holder are labeled)
- Roads
- Watercourses
- Waterbodies

**POA LOCATION DESCRIPTIONS**

- Well 1** - Located 525 feet South and 2,165 feet East from the NW corner of Section 7, Township 2 South, Range 4 East (W.M.)
- Well 2** - Located 535 feet South and 2,335 feet East from the NW corner of Section 7, Township 2 South, Range 4 East (W.M.)
- Well 3** - Located 810 feet South and 2,610 feet East from the NW corner of Section 7, Township 2 South, Range 4 East (W.M.)
- Well 4** - Located 1,050 feet South and 1,460 feet East from the NW corner of Section 8, Township 2 South, Range 4 East (W.M.)
- Well 5** - Located 2,600 feet South and 2,350 feet East from the NW corner of Section 8, Township 2 South, Range 4 East (W.M.)
- Well 7** - Located 60 feet South and 2,600 feet East from the NW corner of Section 7, Township 2 South, Range 4 East (W.M.)
- Well 8** - Located 1,360 feet South and 2,330 feet West from the NE corner of Section 8, Township 2 South, Range 4 East (W.M.)
- Well 9** - Located 85 feet South and 1,015 feet East from the NW corner of Section 8, Township 2 South, Range 4 East (W.M.)

**DISCLAIMER**

This map was prepared for the purpose of identifying the location of a water right only and it is not intended to provide legal dimensions or location of property ownership lines.

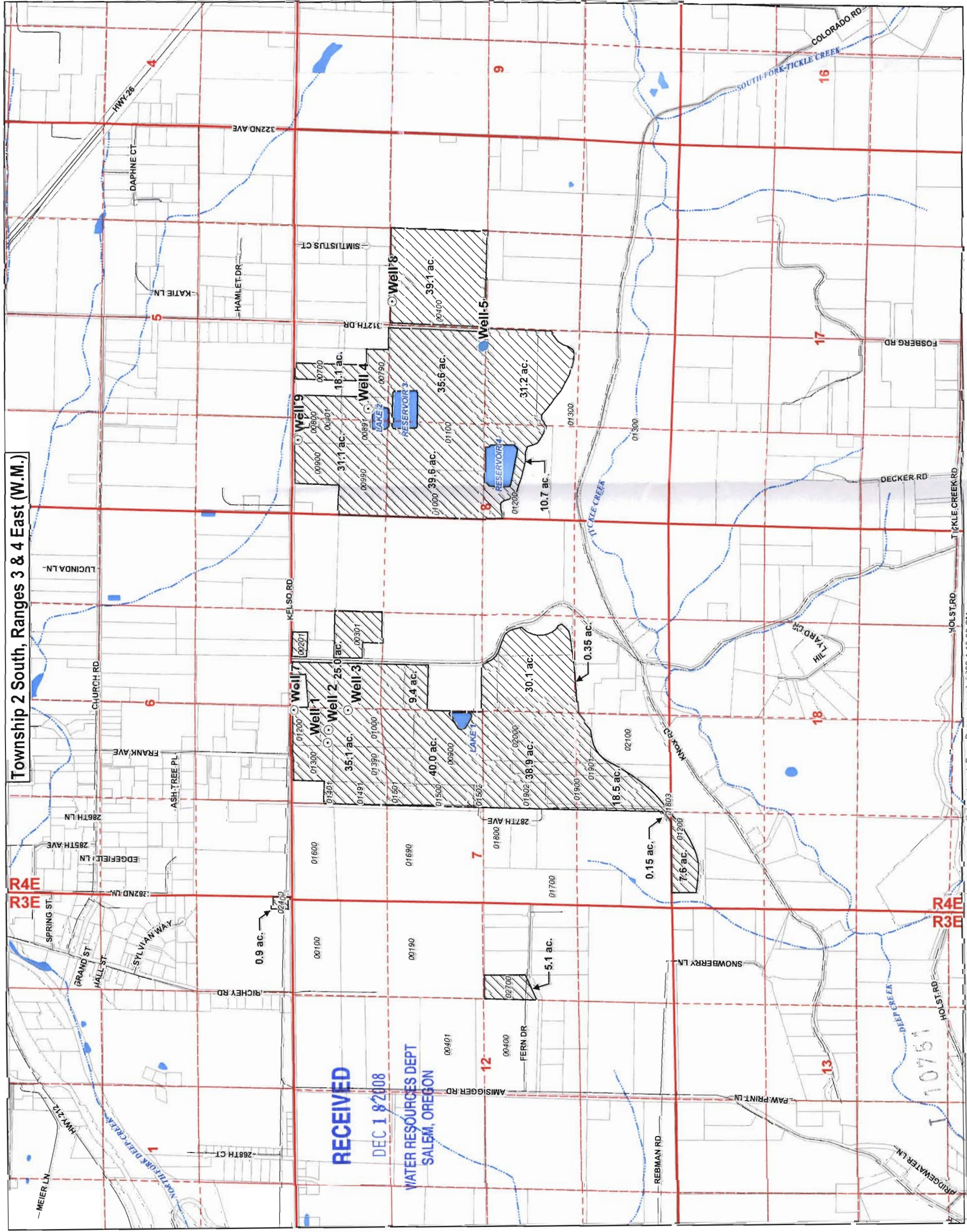


**Scale**  
 1:15,840

0 660 1320 1980 2640  
 1 inch equals 1,320 feet

**MAP NOTES:**

Projection: Oregon State Plane North Zone  
 Datum: North American Datum of 1983  
 Date: December 12, 2008  
 Data Sources: Clackamas County GIS,  
 Oregon Geospatial Data Clearinghouse



File Path: I:\289 - Iseli Nursery Project\_GIS\Project\_Templates\Permit\_G-11134.mxd, Date: December 12, 2008 1:13:32 PM