

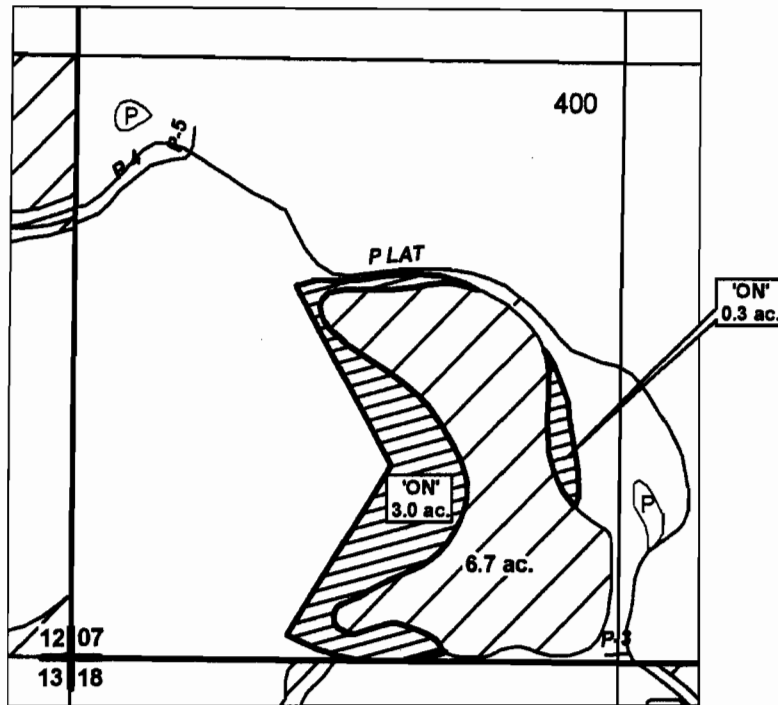
CROOK COUNTY
SEC.07 T15S R15E

SCALE - 1" = 400'



SW 1/4 OF THE SW 1/4

DISTRICT INTERNAL
NOTICE #: T-2008-046



	EXISTING WATER RIGHTS
	'ON' LANDS

"OFF / ON" MAP

T 10755



APPLICATION FOR WATER RIGHTS TRANSFER

COID / WADE R. & JANICE L. AND WILMA E. FLEGEL

TAXLOT #: 400

3.3 ACRES

DATE: 12-02-08

FILE: E:\TRANSFER\WRTRANS08\FLEGEL

DESCHUTES COUNTY SEC.35 T16S R12E

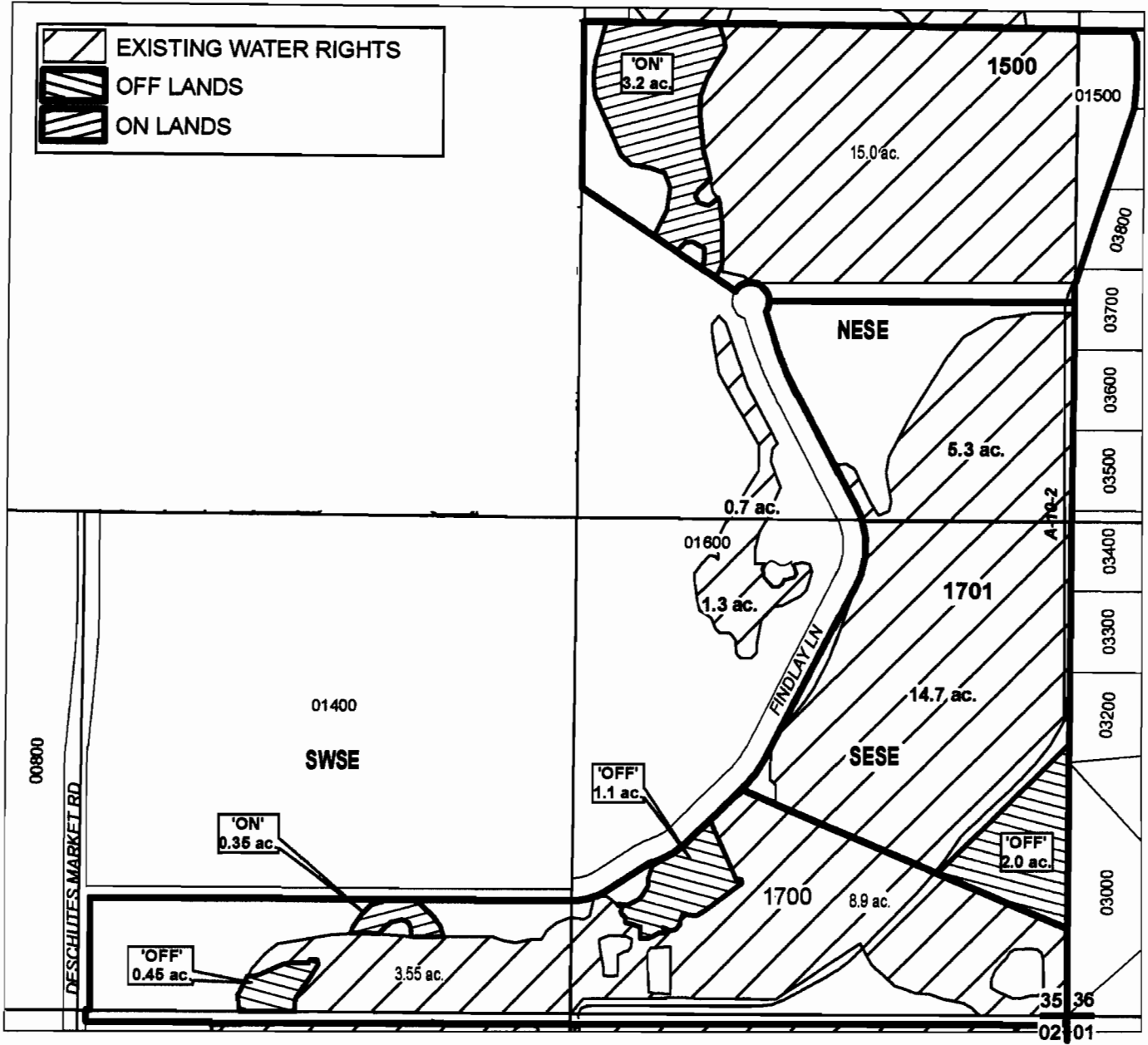
SCALE - 1" = 400'



DISTRICT INTERNAL
NOTICE #: T-2008-017

SE 1/4

"OFF / ON" MAP



CENTRAL OREGON



IRRIGATION DISTRICT

APPLICATION FOR WATER RIGHTS TRANSFER

DAVID & MADELINE HOLMBERG; CREAGER, et al/
DAVID & MADELINE HOLMBERG; SHADOAN, et al

TAXLOT #: 1500, 1700, 1701

3.55 ACRES

DATE: 12-5-08

FILE: EATRANSFERWRTRANS08HOLMBERG

T 10755

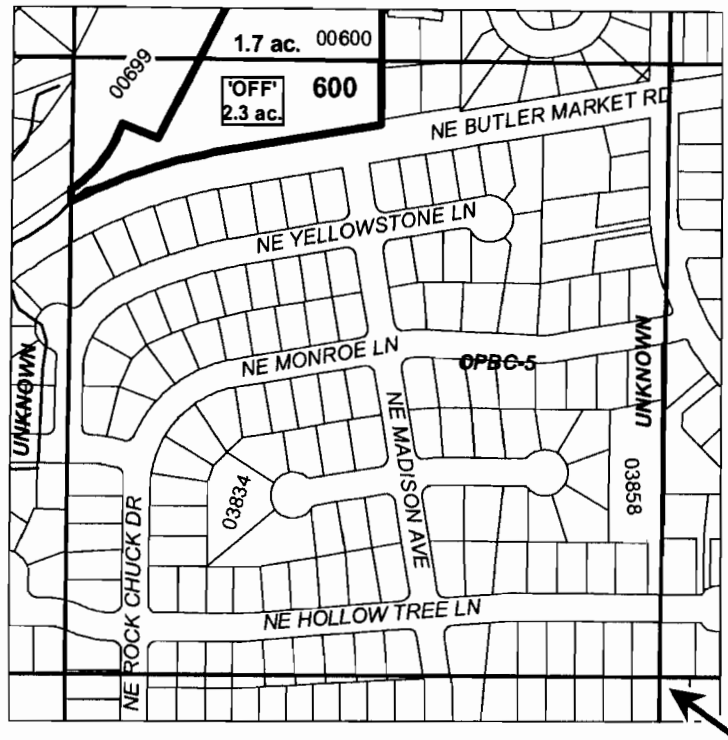
DESCHUTES COUNTY SEC.22 T17S R12E

SCALE - 1" = 400'



SE 1/4 OF THE SW 1/4

DISTRICT INTERNAL
NOTICE #: T-2008-044



E 1/4 COR

T 17S55

"OFF" MAP

# ac.	'OFF' LAND PARCELS
# ac.	PARCELS W/ WATER RIGHTS



APPLICATION FOR WATER RIGHTS TRANSFER

COID/ MICHAEL S. & PATRICIA L. HANNEN

TAXLOT #: 600

2.3 ACRES

DATE: 12-03-08

FILE: E:\TRANSFER\WRTRANS08\171222_SESW_COID

DESCHUTES COUNTY SEC.26 T17S R12E

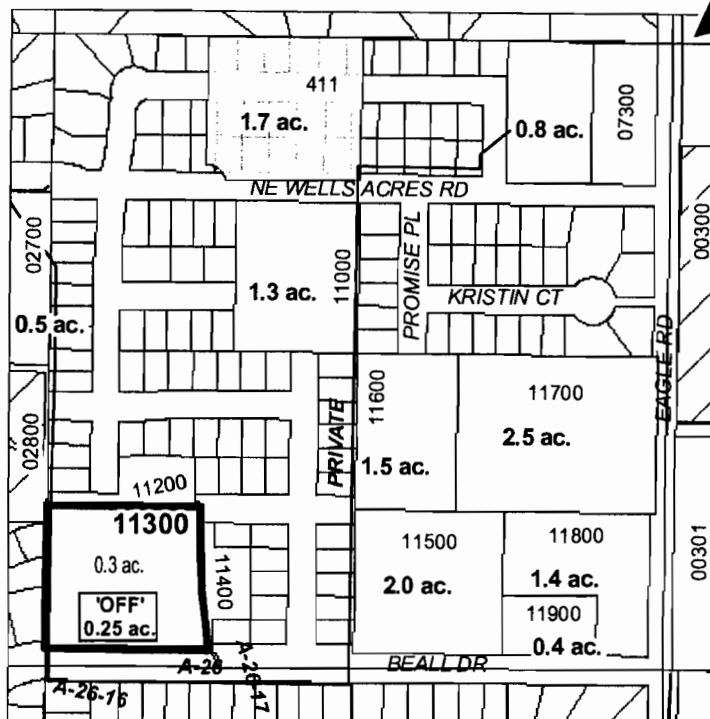
SCALE - 1" = 400'



NE 1/4 OF THE NW 1/4

DISTRICT INTERNAL
NOTICE #: T-2008-044

N 1/4 COR



T 17S55

"OFF" MAP

# ac.	'OFF' LAND PARCELS
# ac.	PARCELS W/ WATER RIGHTS



APPLICATION FOR WATER RIGHTS TRANSFER

COID/ MICHAEL S. & PATRICIA L. HANNEN

TAXLOT #: 11300

0.25 ACRES

DATE: 12-03-08

FILE: E:\TRANSFER\WRTRANS08\COID_171226_OFF4

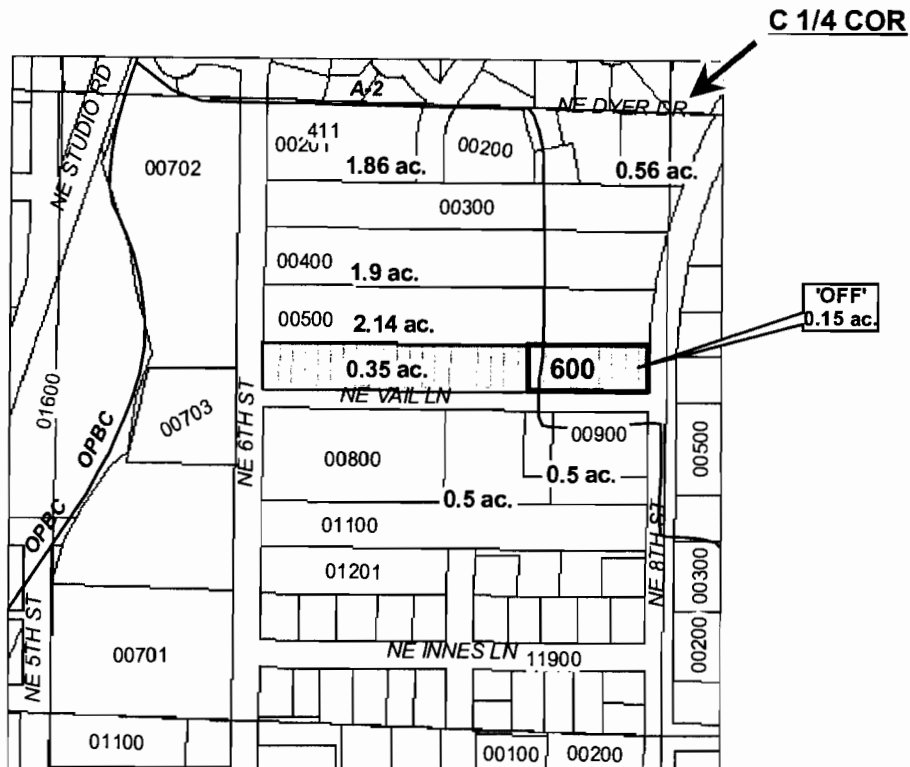
DESCHUTES COUNTY SEC.28 T17S R12E

SCALE - 1" = 400'



NE 1/4 OF THE SW 1/4

DISTRICT INTERNAL
NOTICE #: T-2008-044



T 13755

"OFF" MAP

# ac.	'OFF' LAND PARCELS
# ac.	PARCELS W/ WATER RIGHTS



APPLICATION FOR WATER RIGHTS TRANSFER

COID/ MICHAEL S. & PATRICIA L. HANNEN

TAXLOT #: 600

0.15 ACRES

DATE: 12-03-08

FILE: E:\TRANSFERWRTRANS08\COID_171228_NESW

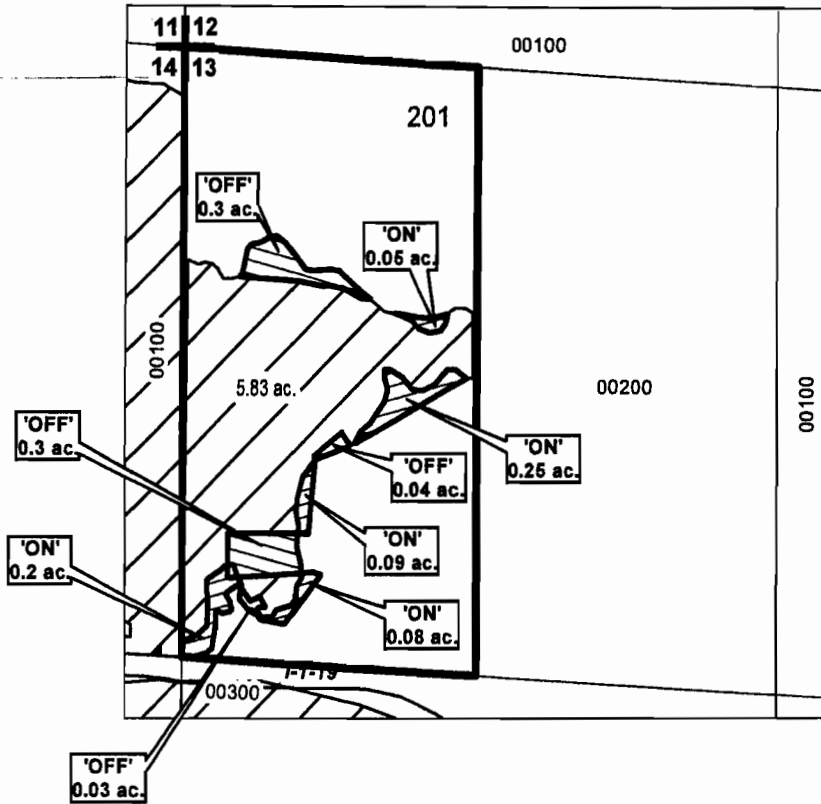
DESCHUTES COUNTY SEC.13 T17S R14E

SCALE - 1" = 400'



NW 1/4 OF THE NW 1/4

DISTRICT INTERNAL
NOTICE #: T-2008-040



T 10755

"OFF / ON" MAP

	EXISTING WATER RIGHTS
	OFF LANDS
	ON LANDS



APPLICATION FOR WATER RIGHTS TRANSFER

BEND ASSOCIATES LIMITED PARTNERSHIP /
BEND ASSOCIATES LIMITED PARTNERSHIP

TAXLOT #: 201

0.67 ACRES

DATE: 10-28-08

FILE: E:\TRANSFER\WRTRANS08\BEND_ASSO

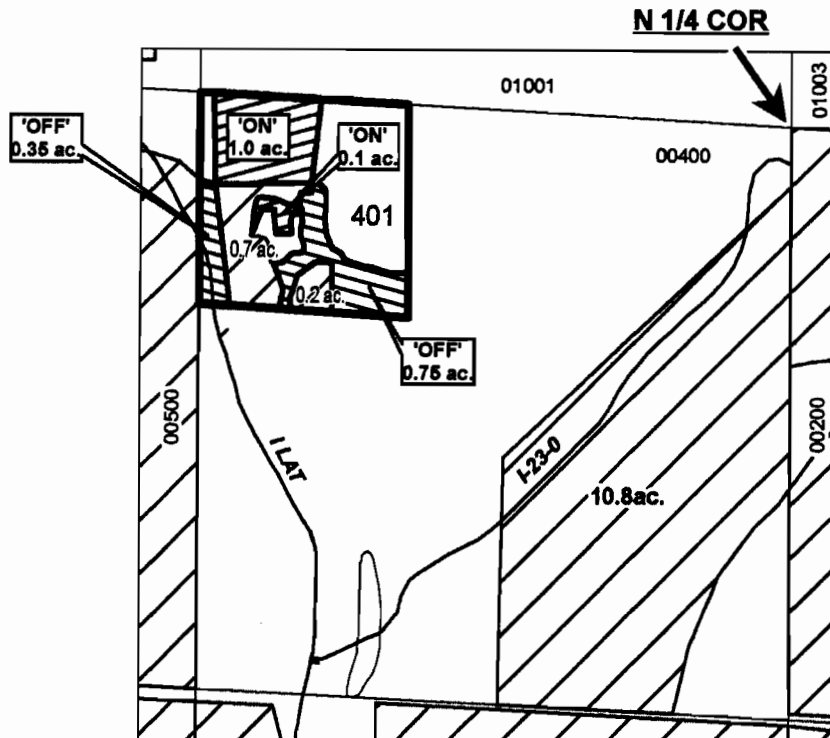
DESCHUTES COUNTY SEC.14 T17S R14E




SCALE - 1" = 400'



NE 1/4 OF THE NW 1/4

DISTRICT INTERNAL
NOTICE #: T-2008-034



-  EXISTING WATER RIGHTS
-  OFF LANDS
-  ON LANDS

"OFF / ON" MAP

10755



APPLICATION FOR WATER RIGHTS TRANSFER

CHRISSIE D. SCHRADER, JR & GAIL M. SCHRADER /
CHRISSIE D. SCHRADER, JR & GAIL M. SCHRADER

TAXLOT #: 401

1.1 ACRES

DATE: 10-14-08

FILE: E:\TRANSFER\WR\TRANS08\SCHRADER

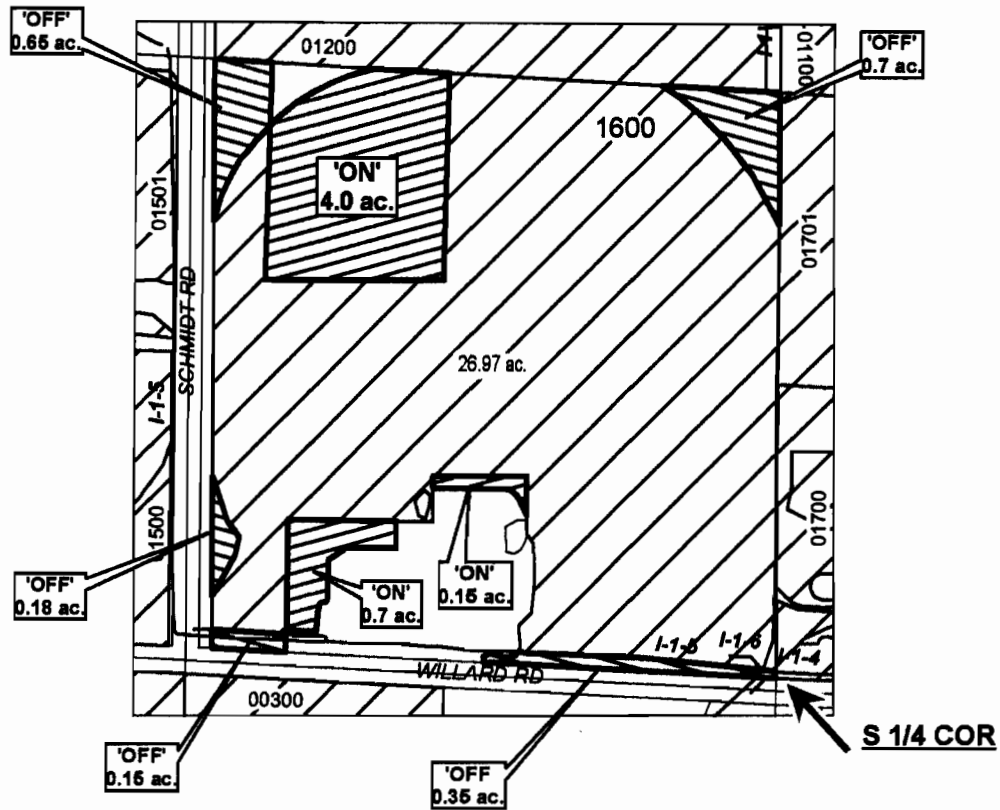
DESCHUTES COUNTY SEC.24 T17S R14E

SCALE - 1" = 400'



SE 1/4 OF THE SW 1/4

DISTRICT INTERNAL
NOTICE #: T-2008-044



T 10755



"OFF / ON" MAP



APPLICATION FOR WATER RIGHTS TRANSFER

MICHAEL S. & PATRICIA L. HANNEN; COID /
MICHAEL S. & PATRICIA L. HANNEN

TAXLOT #: 1600

4.85 ACRES

DATE: 12-02-08

FILE: E:\TRANSFER\WR\TRANS08\HANNEN

DESCHUTES COUNTY SEC.26 T17S R12E

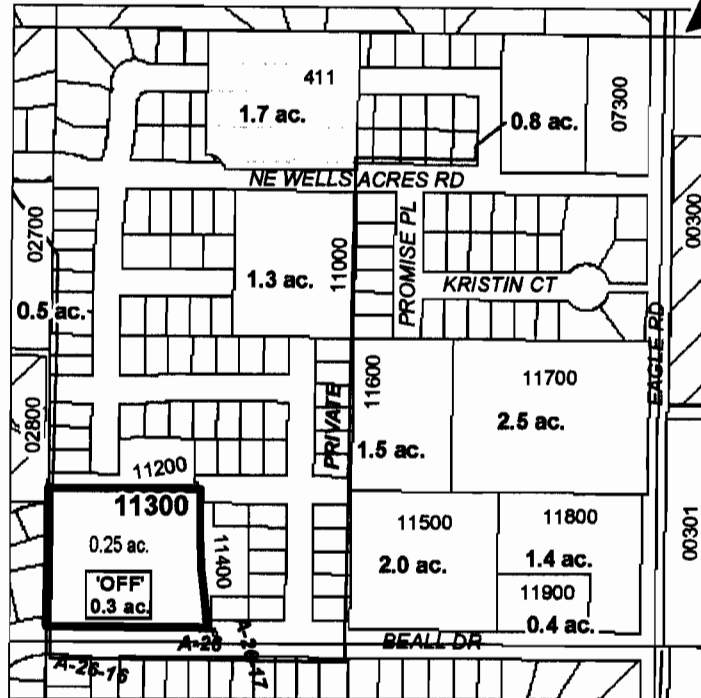
SCALE - 1" = 400'



NE 1/4 OF THE NW 1/4

DISTRICT INTERNAL
NOTICE #: T-2008-046

N 1/4 COR



# ac.	'OFF' LAND PARCELS
# ac.	PARCELS W/ WATER RIGHTS

T 10755

"OFF" MAP



APPLICATION FOR WATER RIGHTS TRANSFER

COID/ WADE R. & JANICE L. FLEGEL, AND WILMA E. FLEGEL

TAXLOT #: 11300

0.3 ACRES

DATE: 12-01-08

FILE: E:\TRANSFER\WR\TRANS08\COID_171226_OFF3

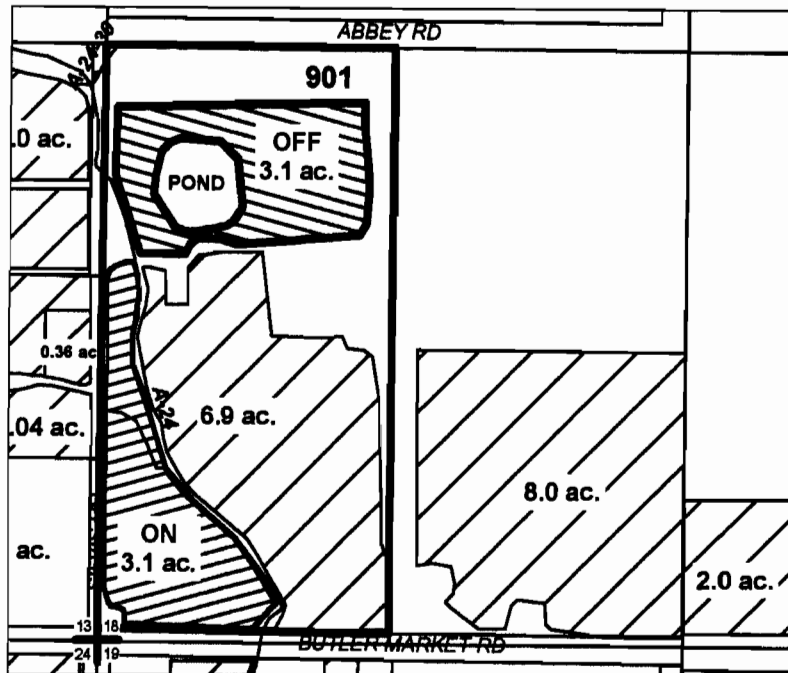
DESCHUTES COUNTY SEC.18 T17S R13E

SCALE - 1" = 400'



SW 1/4 OF THE SW 1/4

DISTRICT INTERNAL
NOTICE #: T-2008-045



	EXISTING WATER RIGHTS
	OFF LANDS
	ON LANDS
	# ac. PARCELS W/ WATER RIGHTS

T 13755

"OFF" / "ON" MAP



APPLICATION FOR WATER RIGHTS TRANSFER

GARY D. EVERETT & JOAN STEELHAMMER /
GARY D. EVERETT & JOAN STEELHAMMER

TAXLOT #: 901

3.1 ACRES

DATE: 02-22-06

FILE: E:\TRANSFER\WRTRANS07\EVERETT.PDF

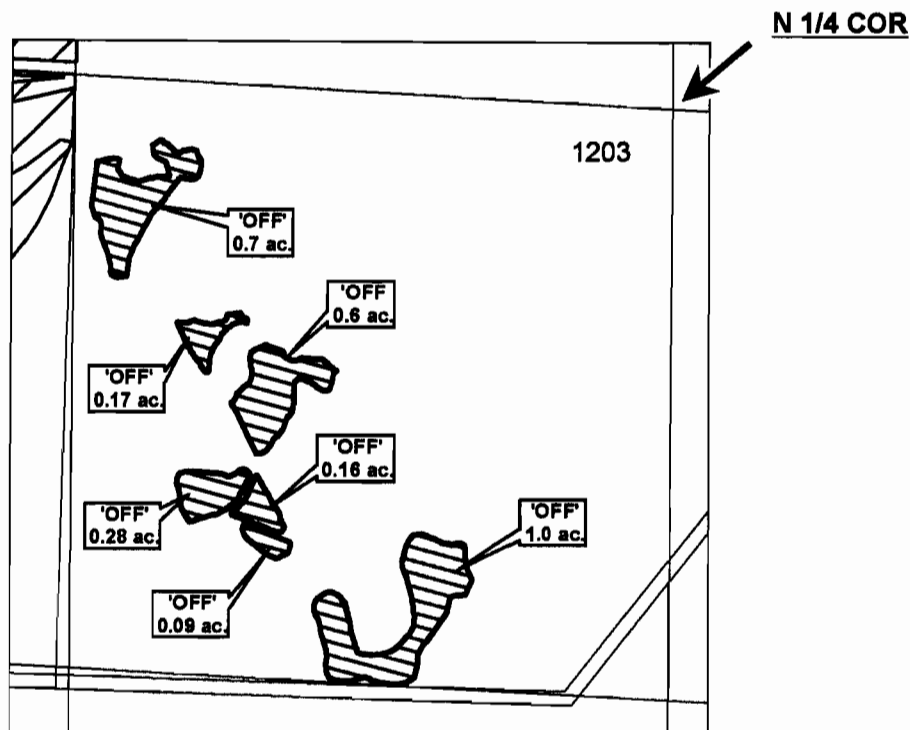
DESCHUTES COUNTY SEC.16 T18S R14E

SCALE - 1" = 400'



NE 1/4 OF THE NW 1/4

DISTRICT INTERNAL
NOTICE #: T-2008-046



"OFF" MAP

T 18755



CENTRAL OREGON



IRRIGATION DISTRICT

APPLICATION FOR WATER RIGHTS TRANSFER

COID / WADE R. & JANICE L. FLEGEL AND WILMA E. FLEGEL

TAXLOT #:1203

3.0 ACRES

DATE: 12-02-08

FILE: E:\TRANSFER\WRTRANS08\COID_181416_1203

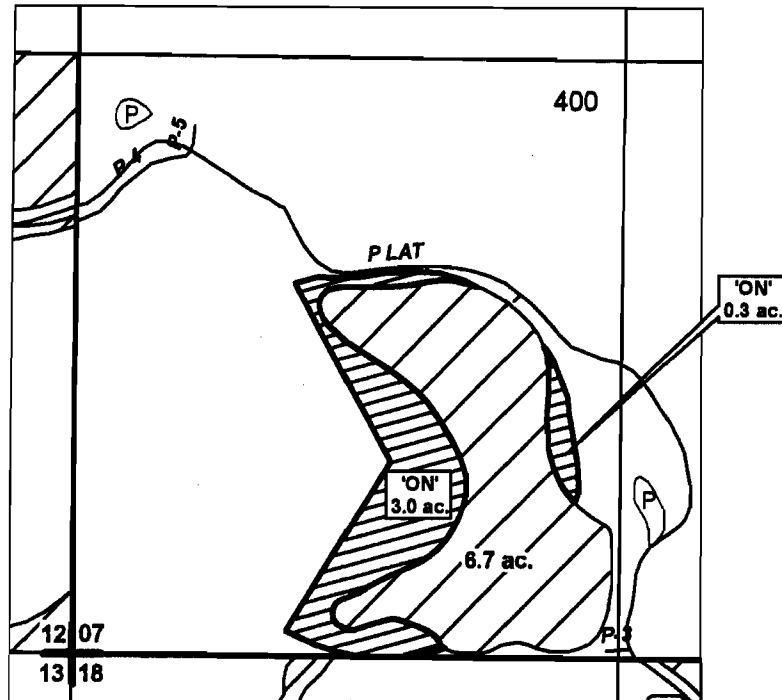
CROOK COUNTY SEC.07 T15S R15E

SCALE - 1" = 400'



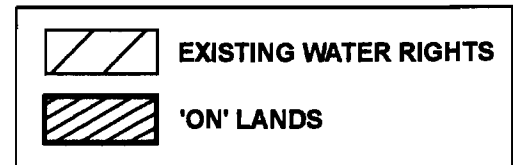
SW 1/4 OF THE SW 1/4

DISTRICT INTERNAL
NOTICE #: T-2008-046



"OFF / ON" MAP

T 16755



APPLICATION FOR WATER RIGHTS TRANSFER

COID / WADE R. & JANICE L. AND WILMA E. FLEGEL

TAXLOT #: 400

3.3 ACRES

DATE: 12-02-08

FILE: E:\TRANSFER\WR\TRANS08\FLEGEL

DESCHUTES COUNTY SEC.35 T16S R12E

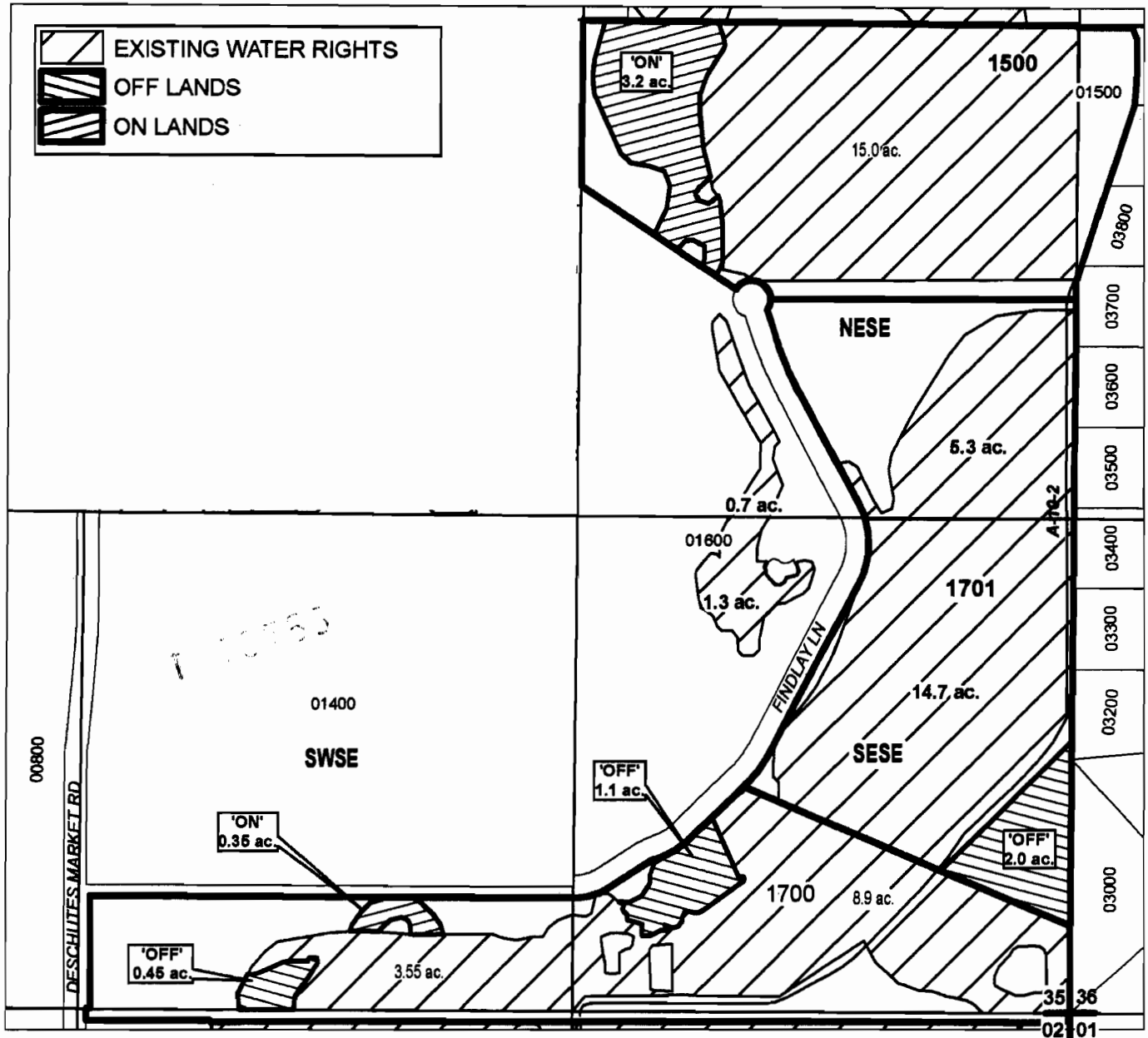
SCALE - 1" = 400'



DISTRICT INTERNAL
NOTICE #: T-2008-017

SE 1/4

"OFF / ON" MAP



CENTRAL OREGON



IRRIGATION DISTRICT

APPLICATION FOR WATER RIGHTS TRANSFER

DAVID & MADELINE HOLMBERG; CREAGER, et al/
DAVID & MADELINE HOLMBERG; SHADOAN, et al

TAXLOT #: 1500, 1700, 1701

3.55 ACRES

DATE: 12-5-08

FILE: E:\TRANSFER\WRTRANS08\HOLMBERG

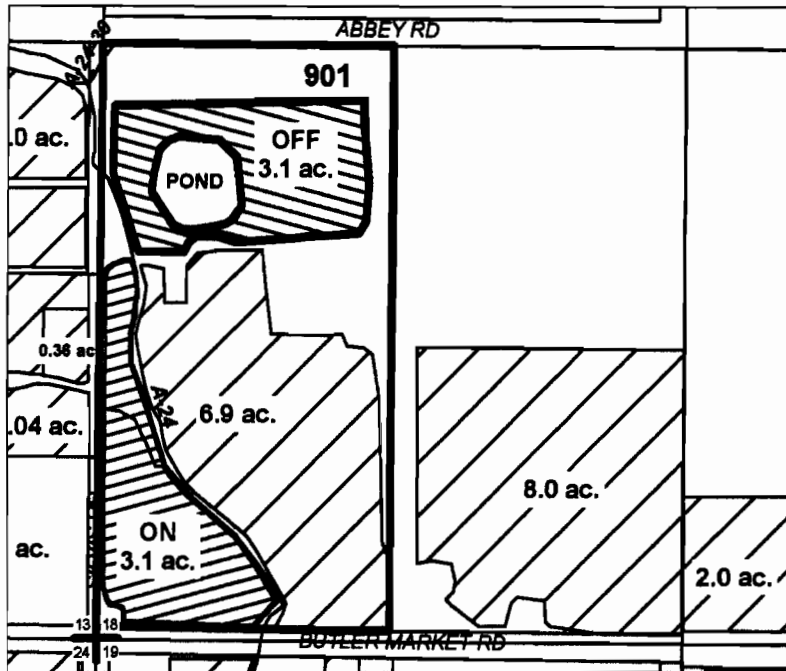
DESCHUTES COUNTY SEC.18 T17S R13E

SCALE - 1" = 400'



SW 1/4 OF THE SW 1/4

DISTRICT INTERNAL
NOTICE #: T-2008-045



	EXISTING WATER RIGHTS
	OFF LANDS
	ON LANDS
	PARCELS W/ WATER RIGHTS

"OFF" / "ON" MAP



APPLICATION FOR WATER RIGHTS TRANSFER

GARY D. EVERETT & JOAN STEELHAMMER /
GARY D. EVERETT & JOAN STEELHAMMER

TAXLOT #: 901

3.1 ACRES

DATE: 02-22-06

FILE: E:\TRANSFER\WR\TRANS07\EVERETT.PDF

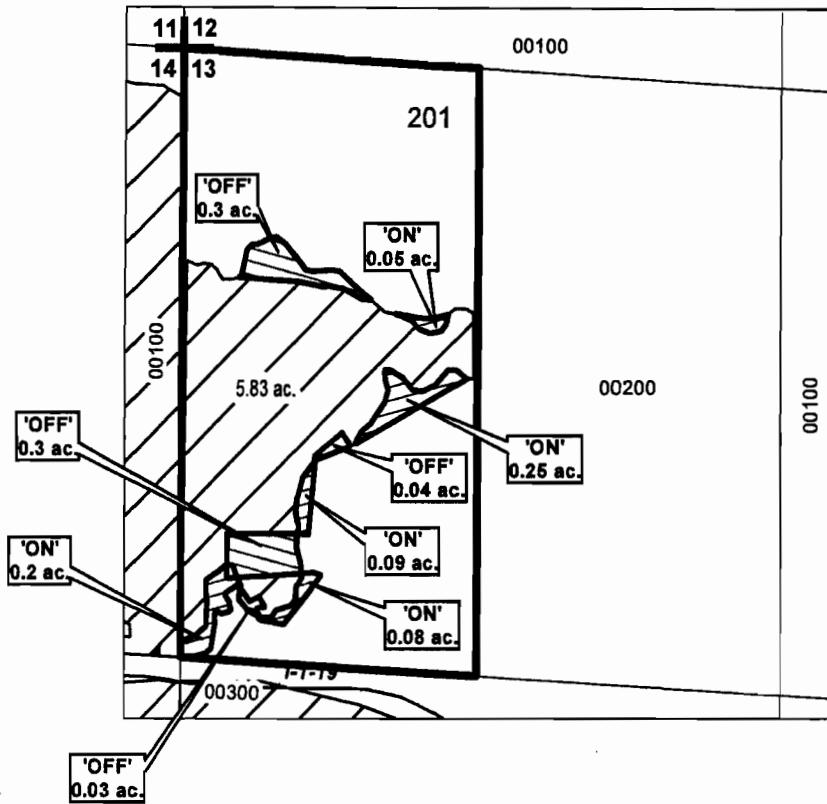
DESCHUTES COUNTY SEC.13 T17S R14E

SCALE - 1" = 400'



NW 1/4 OF THE NW 1/4

DISTRICT INTERNAL
NOTICE #: T-2008-040



	EXISTING WATER RIGHTS
	OFF LANDS
	ON LANDS

"OFF / ON" MAP

T 10755



APPLICATION FOR WATER RIGHTS TRANSFER

BEND ASSOCIATES LIMITED PARTNERSHIP /
BEND ASSOCIATES LIMITED PARTNERSHIP

TAXLOT #: 201

0.67 ACRES

DATE: 10-28-08

FILE: E:\TRANSFER\WRTRANS08\BEND_ASSO

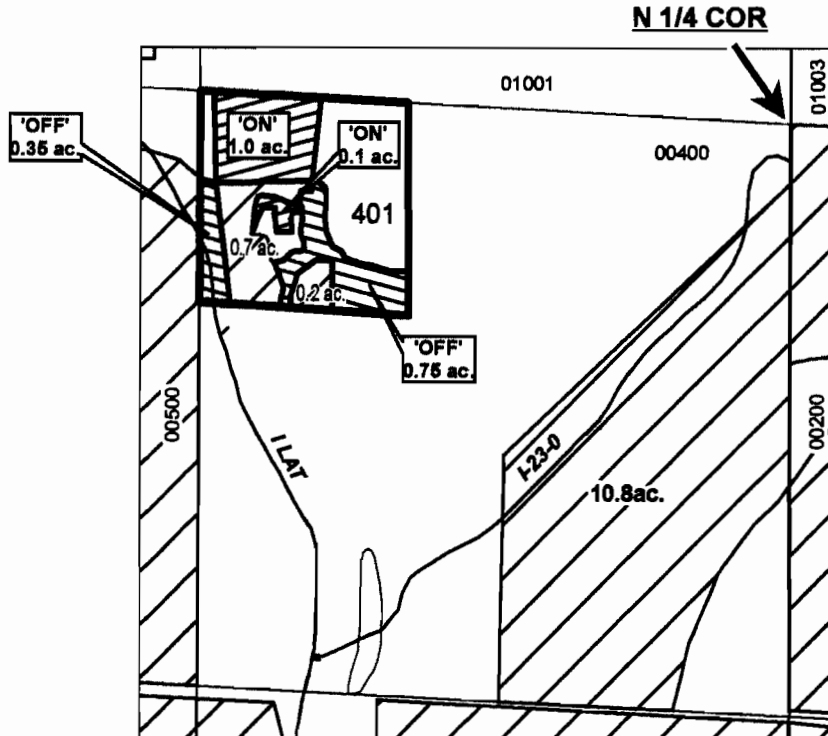
DESCHUTES COUNTY SEC.14 T17S R14E

SCALE - 1" = 400'



NE 1/4 OF THE NW 1/4

DISTRICT INTERNAL
NOTICE #: T-2008-034



T 17S55

	EXISTING WATER RIGHTS
	OFF LANDS
	ON LANDS

"OFF / ON" MAP



APPLICATION FOR WATER RIGHTS TRANSFER

CHRISSIE D. SCHRADER, JR & GAIL M. SCHRADER /
CHRISSIE D. SCHRADER, JR & GAIL M. SCHRADER

TAXLOT #: 401

1.1 ACRES

DATE: 10-14-08

FILE: E:\TRANSFER\WR\TRANS008\SCHRADER

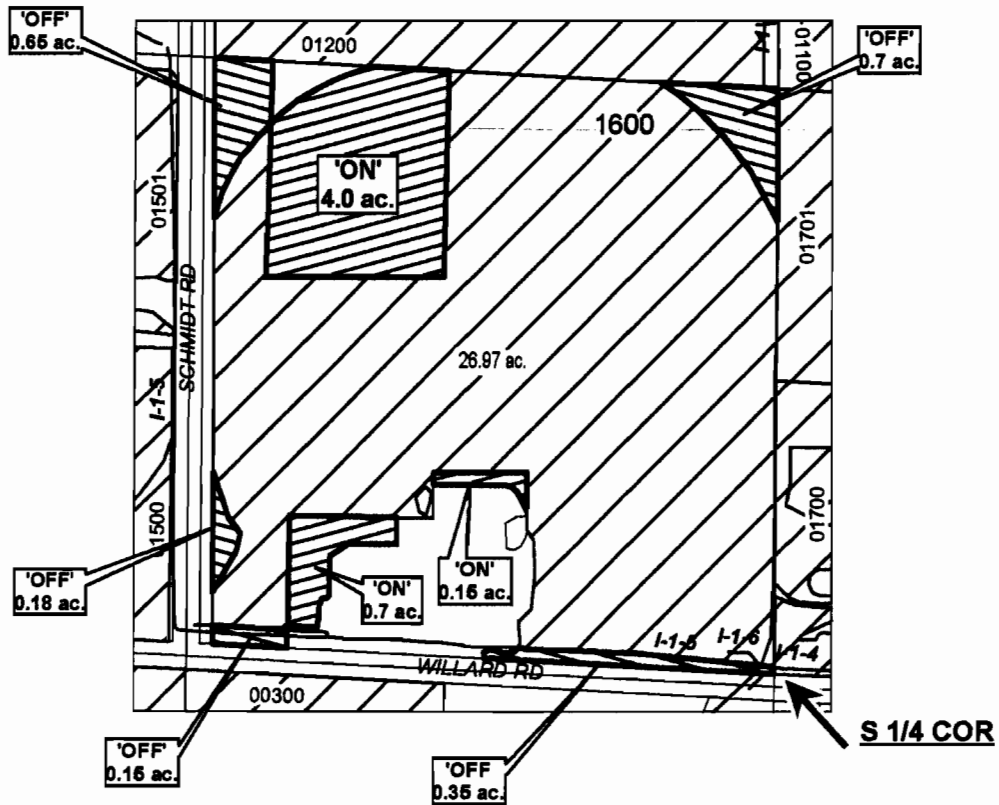
DESCHUTES COUNTY SEC.24 T17S R14E

SCALE - 1" = 400'



SE 1/4 OF THE SW 1/4

DISTRICT INTERNAL
NOTICE #: T-2008-044



	EXISTING WATER RIGHTS
	OFF LANDS
	ON LANDS

T 20755

"OFF / ON" MAP



APPLICATION FOR WATER RIGHTS TRANSFER

MICHAEL S. & PATRICIA L. HANNEN; COID /
MICHAEL S. & PATRICIA L. HANNEN

TAXLOT #: 1600

4.85 ACRES

DATE: 12-02-08

FILE: E:\TRANSFER\WRTRANS08\HANNEN