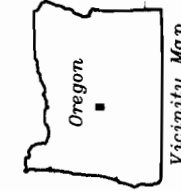
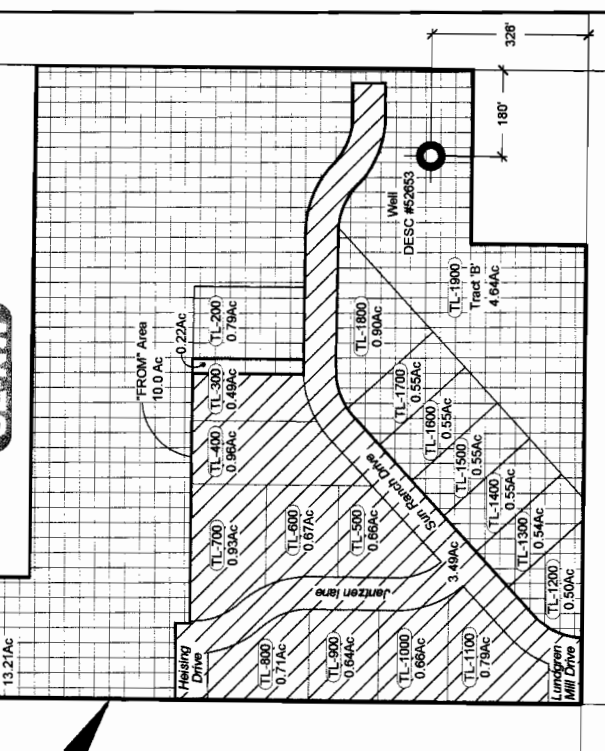


SE-W



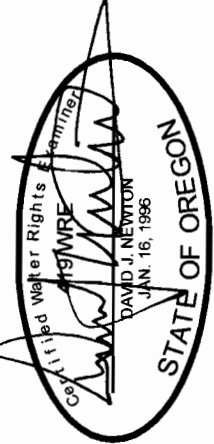
EXPLANATION

	"FROM" Acres
	"TO" Acres
	"REMAINING" Acres

WATER TRANSFER MAP

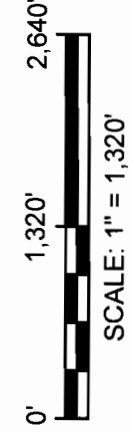
"FROM" Areas
 Located in SE 1/4 - NW 1/4 of Section 4, T15S, R10E, W.M.
 Partial Tax Lot for 300, and Tax Lots 400, 500,
 600, 700, 800, 900, 1000, 1100
 and Portions of Heising Drive, Jantzen Lane,
 Sun Ranch Drive, and Lundgren Mill Drive.
 Deschutes County, Oregon

"TO" Areas
 Located in NE 1/4 - NW 1/4 of Section 15, T15S, R10E, W.M.
 Tax Lot 1401, Deschutes County, Oregon



NOTES

1. This map was prepared for the purpose of identifying the location of water rights only and is not intended to provide legal dimensions or locations of property ownership lines.



DESIGNED BY: **K. Turner**
 DRAWN BY: **S. Schenck**
 DATE: **Dec 2008**
 PROJECT NO: **1055-104**
 FIGURE **1**



NEWTON CONSULTANTS INC.
 Earth, Water and Rock Specialists
 Ph: 541 504-9960 Fax: 541 504-9961

Water Rights Transfer Application Map
 Dutch Pacific Properties, LP
 Sisters, Deschutes County, Oregon

RECEIVED
 DEC 23 2008
 WATER RESOURCES DEPT
 SALEM, OREGON