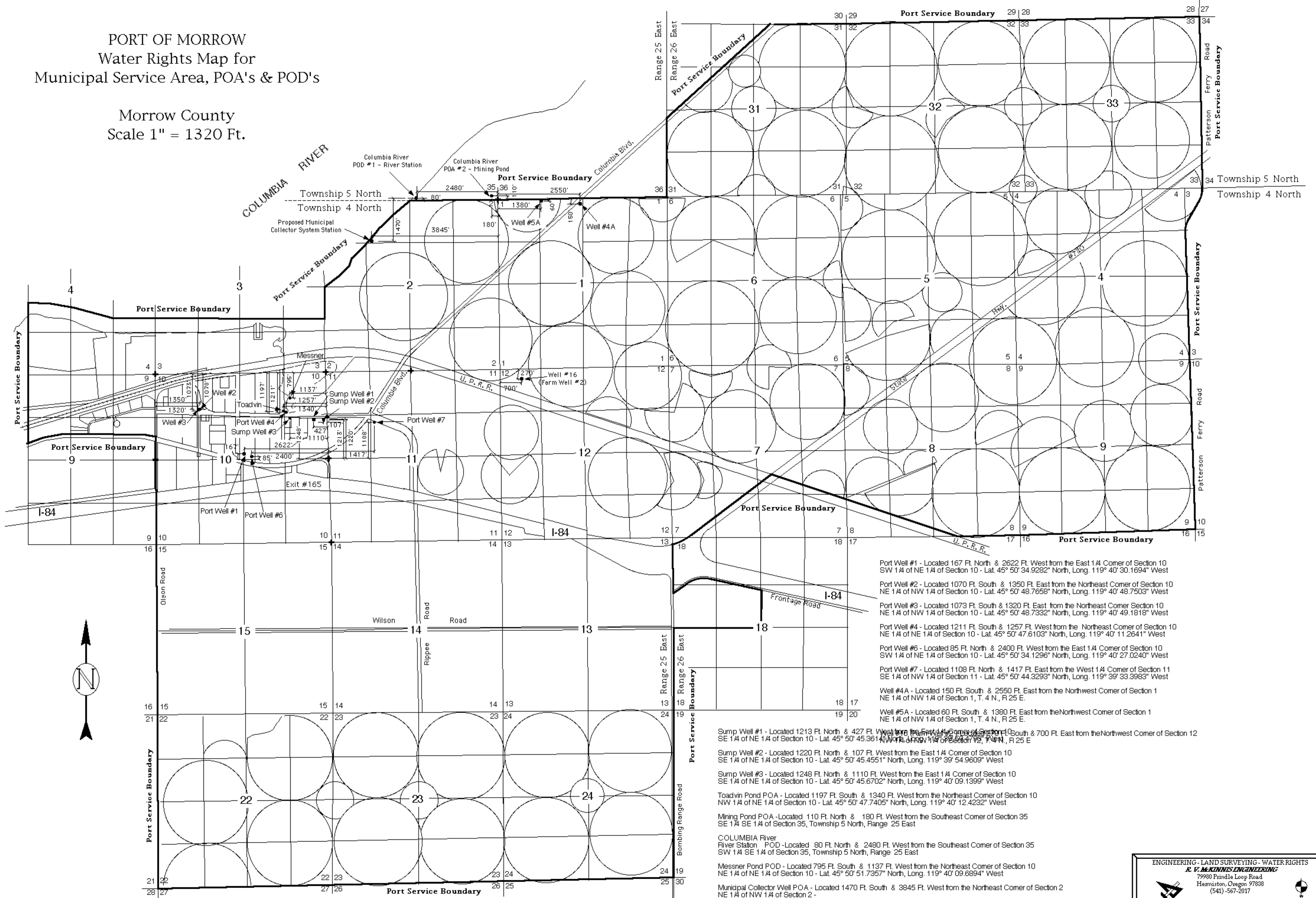


PORT OF MORROW
Water Rights Map for
Municipal Service Area, POA's & POD's

Morrow County
Scale 1" = 1320 Ft.



- Port Well #1 - Located 167 Ft. North & 2622 Ft. West from the East 1/4 Corner of Section 10 SW 1/4 of NE 1/4 of Section 10 - Lat. 45° 50' 34.9282" North, Long. 119° 40' 30.1694" West
- Port Well #2 - Located 1070 Ft. South & 1350 Ft. East from the Northeast Corner of Section 10 NE 1/4 of NW 1/4 of Section 10 - Lat. 45° 50' 48.7658" North, Long. 119° 40' 48.7503" West
- Port Well #3 - Located 1073 Ft. South & 1320 Ft. East from the Northeast Corner Section 10 NE 1/4 of NW 1/4 of Section 10 - Lat. 45° 50' 48.7332" North, Long. 119° 40' 49.1818" West
- Port Well #4 - Located 1211 Ft. South & 1257 Ft. West from the Northeast Corner of Section 10 NE 1/4 of NE 1/4 of Section 10 - Lat. 45° 50' 47.6103" North, Long. 119° 40' 11.2641" West
- Port Well #6 - Located 85 Ft. North & 2400 Ft. West from the East 1/4 Corner of Section 10 SW 1/4 of NE 1/4 of Section 10 - Lat. 45° 50' 34.1296" North, Long. 119° 40' 27.0240" West
- Port Well #7 - Located 1108 Ft. North & 1417 Ft. East from the West 1/4 Corner of Section 11 SE 1/4 of NW 1/4 of Section 11 - Lat. 45° 50' 44.3293" North, Long. 119° 39' 33.3983" West
- Well #4A - Located 150 Ft. South & 2550 Ft. East from the Northwest Corner of Section 1 NE 1/4 of NW 1/4 of Section 1, T. 4 N., R. 25 E.
- Well #5A - Located 60 Ft. South & 1380 Ft. East from the Northwest Corner of Section 1 NE 1/4 of NW 1/4 of Section 1, T. 4 N., R. 25 E.

- Sump Well #1 - Located 1213 Ft. North & 427 Ft. West from the East 1/4 Corner of Section 10 SE 1/4 of NE 1/4 of Section 10 - Lat. 45° 50' 45.3614" North, Long. 119° 40' 12.1471" West
- Sump Well #2 - Located 1220 Ft. North & 107 Ft. West from the East 1/4 Corner of Section 10 SE 1/4 of NE 1/4 of Section 10 - Lat. 45° 50' 45.4551" North, Long. 119° 39' 54.9609" West
- Sump Well #3 - Located 1248 Ft. North & 1110 Ft. West from the East 1/4 Corner of Section 10 SE 1/4 of NE 1/4 of Section 10 - Lat. 45° 50' 45.6702" North, Long. 119° 40' 09.1399" West
- Toadwin Pond POA - Located 1197 Ft. South & 1340 Ft. West from the Northeast Corner of Section 10 NW 1/4 of NE 1/4 of Section 10 - Lat. 45° 50' 47.7405" North, Long. 119° 40' 12.4232" West
- Mining Pond POA - Located 110 Ft. North & 180 Ft. West from the Southeast Corner of Section 35 SE 1/4 of NE 1/4 of Section 35, Township 5 North, Range 25 East
- COLUMBIA River River Station - Located 80 Ft. North & 2480 Ft. West from the Southeast Corner of Section 35 SW 1/4 of NE 1/4 of Section 35, Township 5 North, Range 25 East
- Messner Pond POD - Located 795 Ft. South & 1137 Ft. West from the Northeast Corner of Section 10 NE 1/4 of NE 1/4 of Section 10 - Lat. 45° 50' 51.7357" North, Long. 119° 40' 09.6894" West
- Municipal Collector Well POA - Located 1470 Ft. South & 3845 Ft. West from the Northeast Corner of Section 2 NE 1/4 of NW 1/4 of Section 2 -



ENGINEERING - LAND SURVEYING - WATER RIGHTS
R. V. MCKINIS ENGINEERING
 79980 Prindle Loop Road
 Hemiston, Oregon 97838
 (541)-567-2017