

Amended map received 5/22/08 by email

MILLS TO CORREA

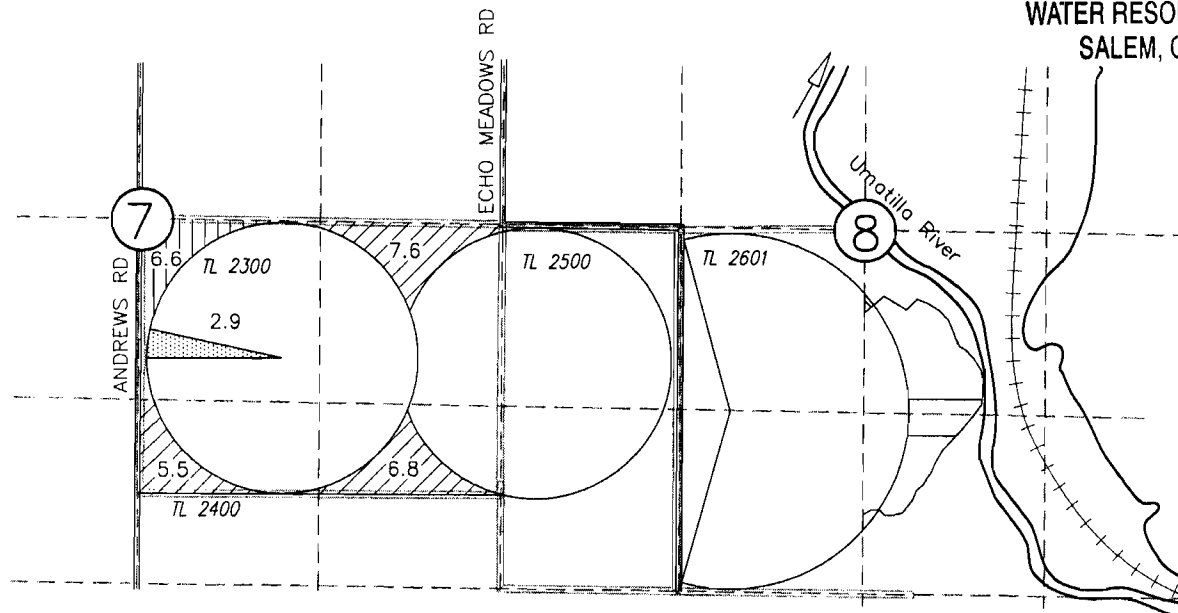
ONE YEAR
 TEMPORARY WATER RIGHT TRANSFER APPLICATION
 MAP UMATILLA COUNTY

RECEIVED

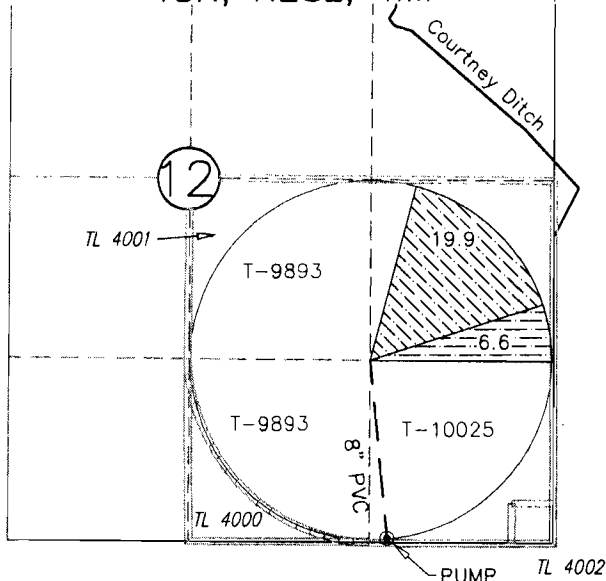
JAN 15 2009

T3N, R29E, WM

WATER RESOURCES DEPT
 SALEM, OREGON

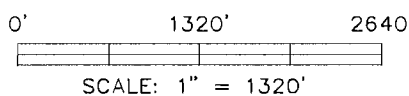
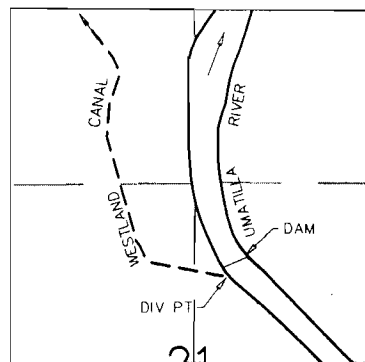


T3N, R28E, WM



FROM	TO
19.9 UMATILLA RIVER DECREE VOL 3 PAGE 127 IN THE NAME OF FRED ANDREWS, 12/31/1870	19.9
6.6 UMATILLA RIVER DECREE VOL 15 PAGE 378, 12/31/1900	6.6
2.9 UMATILLA RIVER DECREE VOL 15 PAGE 378, 12/31/1900 NOT INVOLVED IN THIS TRANSFER	

T.3N., R.29E., W.M.



SCALE: 1" = 1320'

NOTE:
 THE PURPOSE OF THIS MAP IS TO IDENTIFY THE APPROXIMATE LOCATION OF THE WATER RIGHT. IT IS NOT INTENDED TO PROVIDE INFORMATION RELATIVE TO THE LOCATION OF PROPERTY OWNERSHIP BOUNDARY LINES.

DIV PT LCT N.76°45'56"E. 2913.19' FROM W.1/4 COR. SEC 21

DRAWING: F:\30-08-016 - Porfily Water Rights Consulting\00 Misc Engineering\Cad\078\3522078TR M TO C.DWG
 PRINTED BY: rwillard on 05/21/08 01:19 PM

T 13770