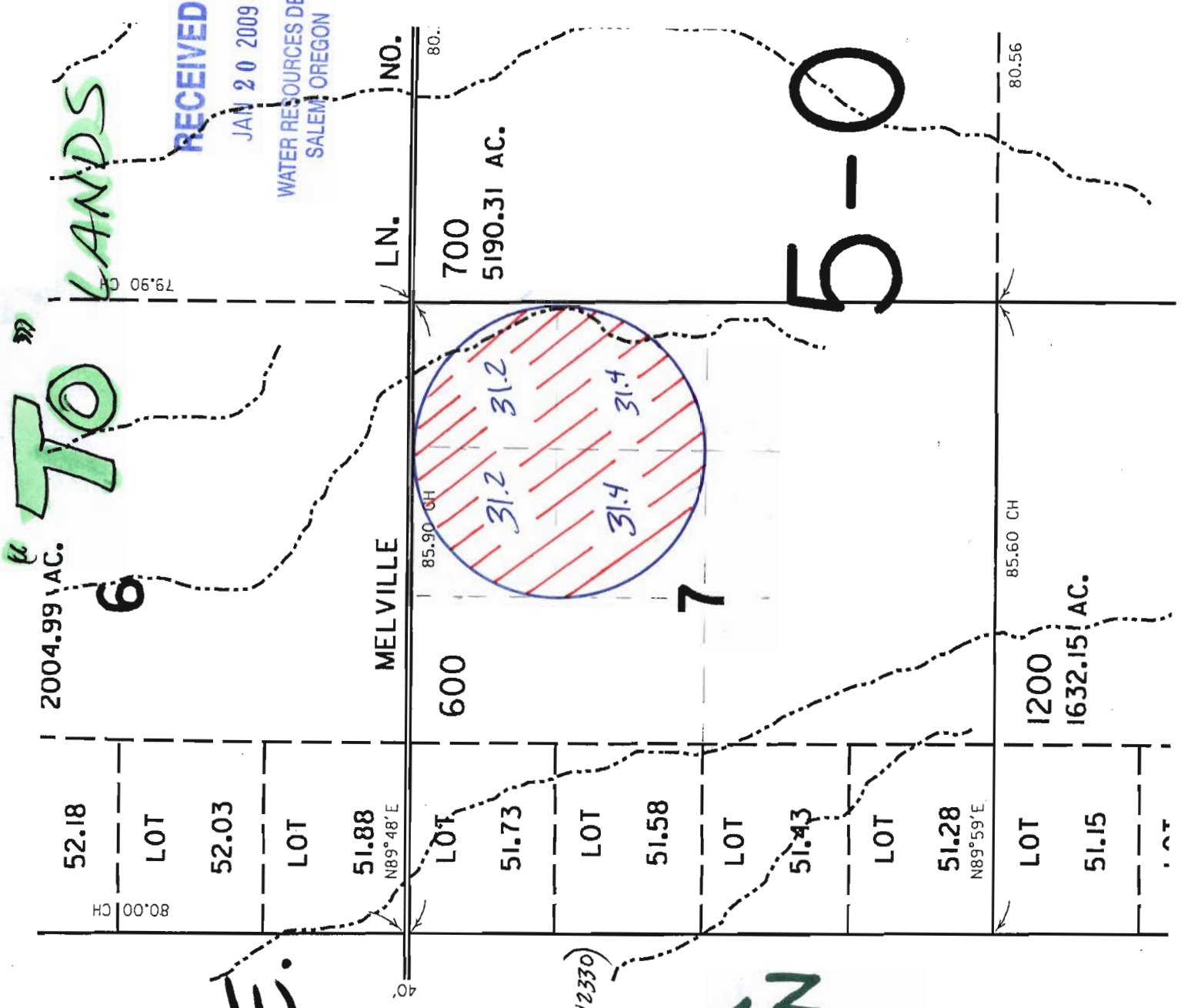


1 10771



T. 1N.,
R. 27E.

SCALE:
1" = 1320'

PROPOSED
TO LANDS (CERT. 42330)



Proposed place of use

- NE 1/4, NE 1/4 31.2
- NW 1/4, NE 1/4 31.2
- SW 1/4, NE 1/4 31.4
- SE 1/4, NE 1/4 31.4

T. 1N., R. 27E., Sec 7 W. 10

T.L. 600

RECEIVED

JAN 20 2009

WATER RESOURCES DEPT
SALEM, OREGON

TO LANDS

5-0