



Scale 1" = 1320'



Township 36 South, Range 14 E. W.M.

Old POD - 2680 E from NW corner, Section 27

New POD - 2160 N & 10 W from SE corner, Section 27

RECEIVED

JAN 20 2008

WATER RESOURCES DEPT
SALEM, OREGON

10775

TL 100

TL 3300

TL 3400

TL 1000

36S 14E

Old POD

TL 3500

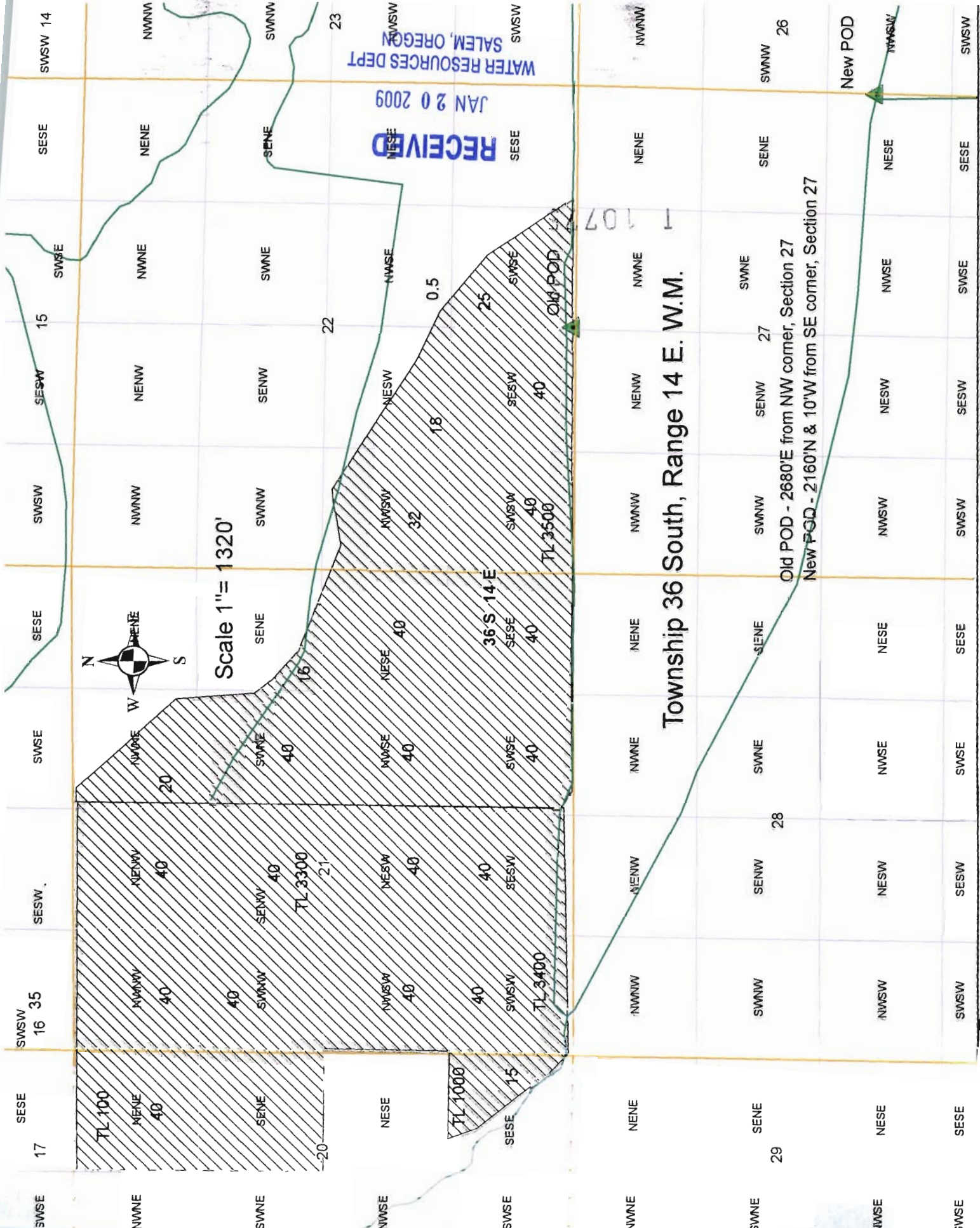
RECEIVED
JAN 20 2009
WATER RESOURCES DEPT
SALEM, OREGON



Scale 1" = 1320'

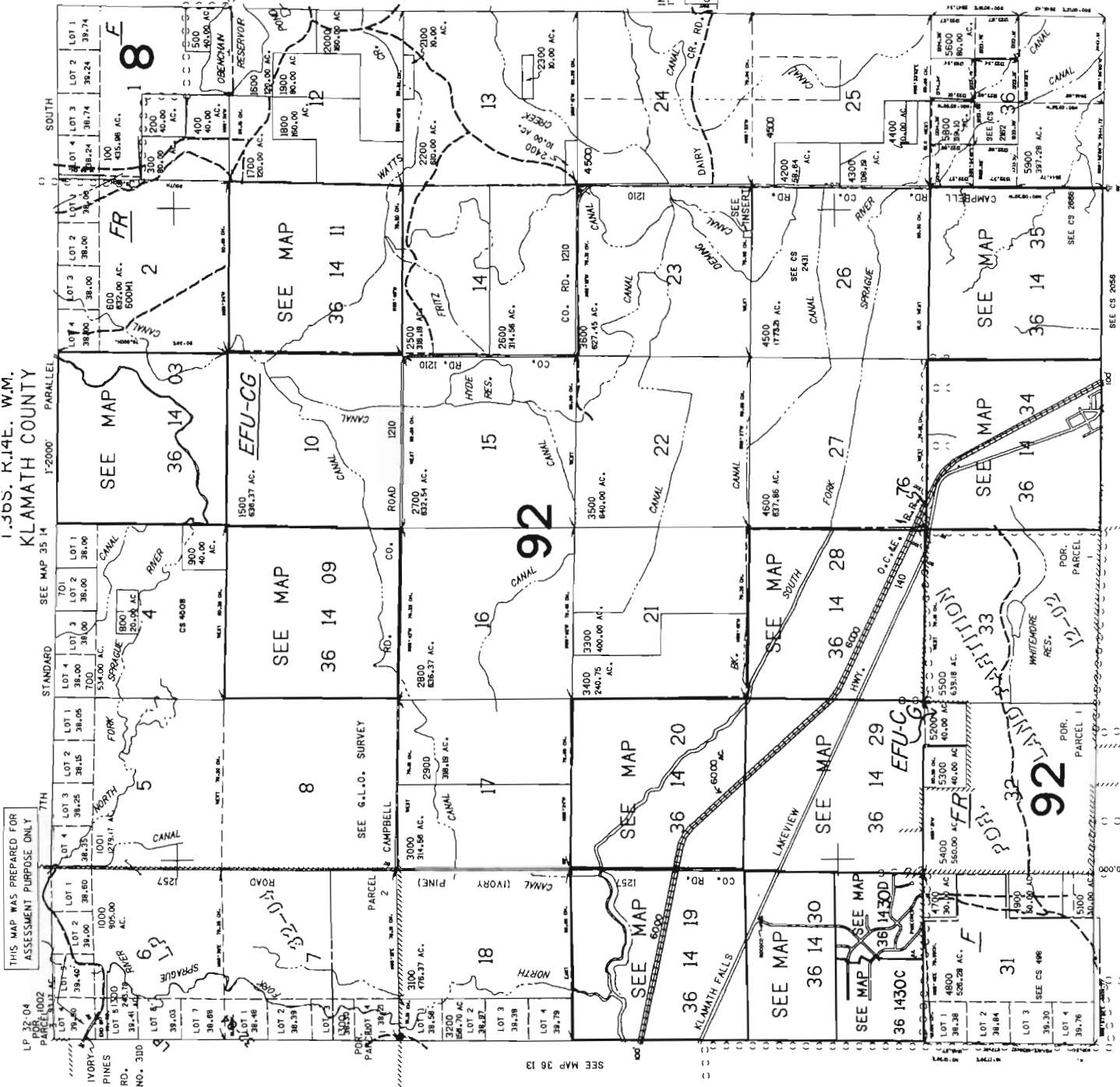
Township 36 South, Range 14 E. W.M.

Old POD - 2680'E from NW corner, Section 27
New POD - 2160'N & 10'W from SE corner, Section 27



I.JOB. K.J4E. W.M.
KLAMATH COUNTY

CANCELLED NO.



10775

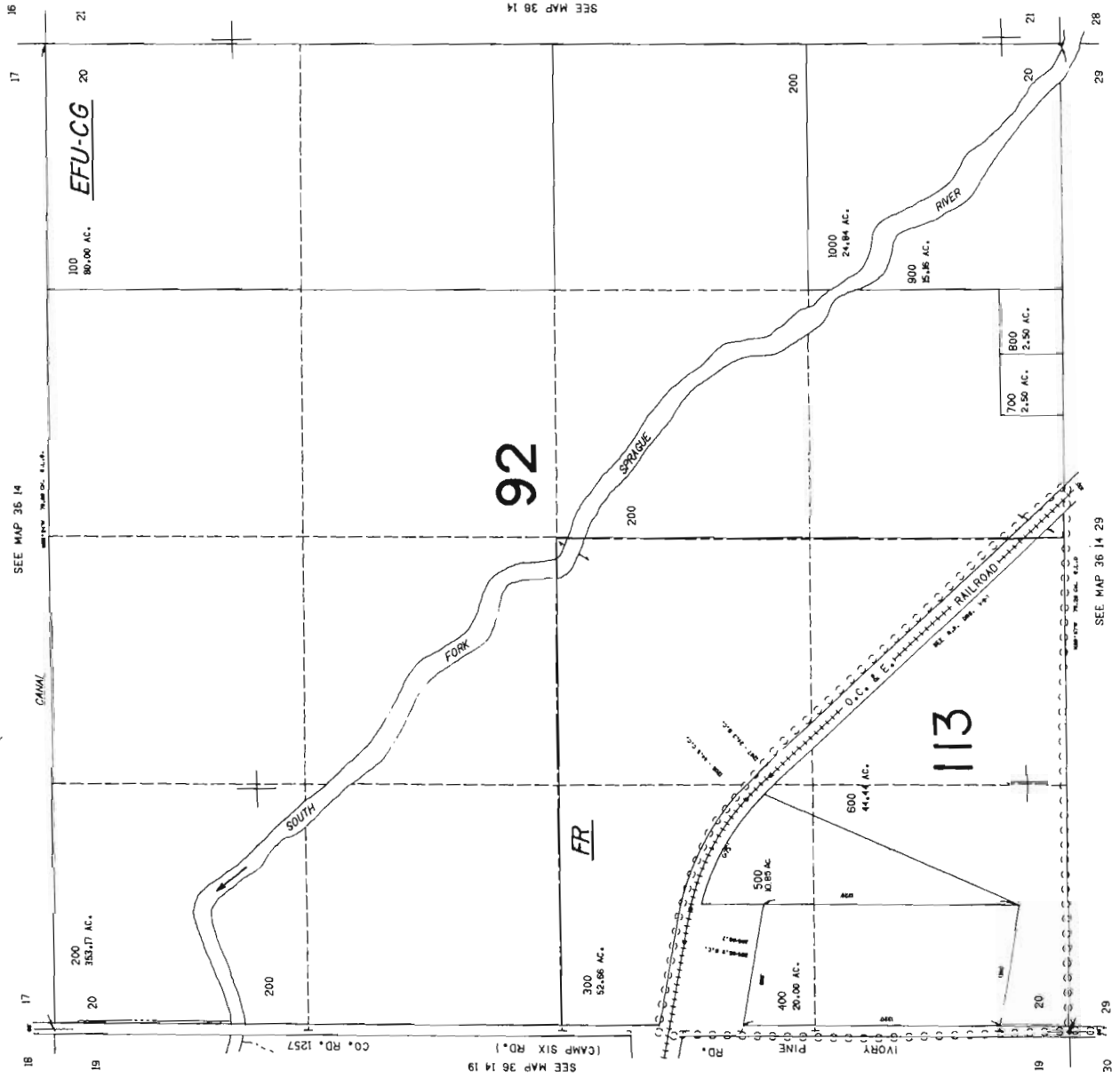
RECEIVED

JAN 20 2009

WATER RESOURCES DEPT
SALEM, OREGON

KLAMATH COUNTY
1"=400'

THIS MAP WAS PREPARED FOR
ASSESSMENT PURPOSE ONLY



RECEIVED
JAN 20 2009
WATER RESOURCES DEPT
SALEM, OREGON

1 10775

278,000