

Temporary Transfer Maps

Map Source:

Geo-Spatial Solutions

Color Codes:

<i>FROM Acres:</i>	<i>Pink</i>	<i>79442 (1905 Priority w/79440)</i>
<i>FROM Acres</i>	<i>Green</i>	<i>76113 (1965 Priority w/79440)</i>

<i>TO Acres:</i>	<i>Purple</i>	<i>79442 (1905 Priority w/79440)</i>
<i>TO Acres:</i>	<i>Yellow</i>	<i>76113 (1965 Priority w/79440)</i>

RECEIVED

FEB 19 2009

WATER RESOURCES DEPT
SALEM, OREGON

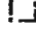














T 10784

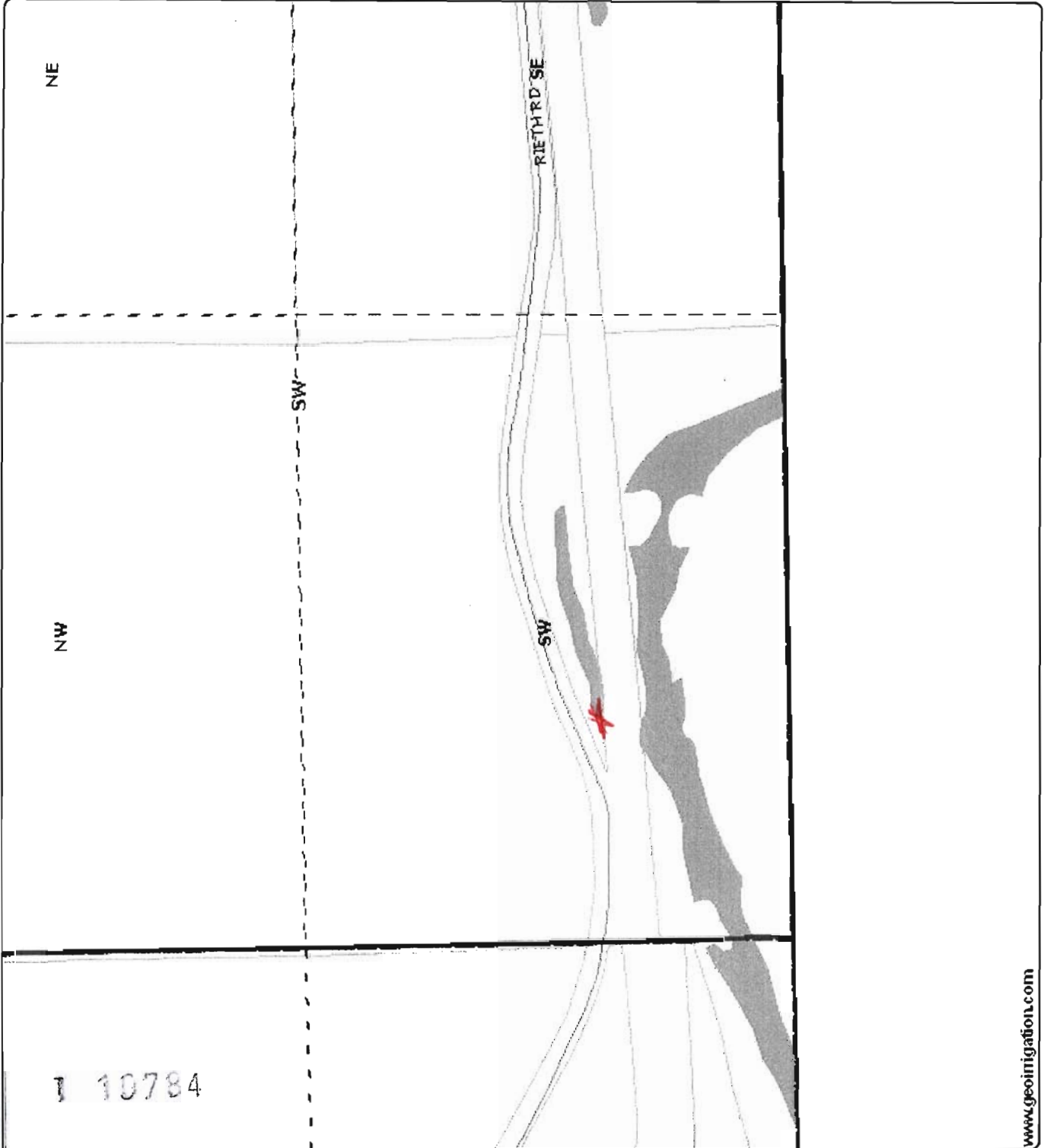
Stanfield Irrigation District

Point of Delivery - T 3N R
30E SEC 31

Located 380' North and
650' East from the SW Corner of
Section 31

10784

-  District Boundary
-  Highways
-  Major Roads
-  Roads
-  Road Labels
-  Township Range
-  Sections
-  Section Labels
-  Quarters
-  Quarter Labels
-  Quarter Quarters
-  Quarter Quarter Labels
-  Taxlots
-  NHD Waterbody
-  NHD Stream/River Area



RECEIVED
FEB 19 2009
WATER RESOURCES DEPT
SALEM, OREGON



Scale 1" = 400'
Created: 2/16/2009

Stanfield Irrigation District

T 3N R29 SEC 04

Tx Lt 500 - 7.0 ; TxLt 1300 - 6.0;
TxLt 1400 - 7.0; TxLt 1501 - 4.0

- District Boundary
- Highways
- Major Roads
- Roads
- Road Labels
- Township Range
- Sections
- Section Labels
- Quarters
- Quarter Labels
- Quarter Quarters
- Quarter Quarter Labels
- Lot Labels
- Taxlots
- POU District Primary
- POD District Supplemental
- NHD Waterbody
- NHD Stream/River Area

RECEIVED

FEB 19 2009

WATER RESOURCES DEPT
SALEM, OREGON



Scale 1" = 400'
Created: 2/16/2009



www.geoinformation.com

DISCLAIMER: This map is intended for display purposes only and is not intended for any legal representations. There are no warranties, expressed or implied, that accompany this product.

T 10784

Stanfield Irrigation District

T 3N R 29E SEC 05
 TX LT 400 - 12.0; TX LT 1201 -
 4.6

- District Boundary
- Highways
- Major Roads
- Roads
- Road Labels
- Township Range
- Sections
- Section Labels
- Quarters
- Quarter Labels
- Quarter Quarters
- Quarter Quarter Labels
- Lot Labels
- Taxlots
- POU District Primary
- POU District Supplemental
- NHD Waterbody
- NHD Stream/River Area

RECEIVED

FEB 19 2009

WATER RESOURCES DEPT
 SALEM, OREGON



Scale 1" = 400'
 Created: 2/16/2009



www.geoinformation.com

DISCLAIMER: This map is intended for display purposes only and is not intended for any legal representations. There are no warranties, expressed or implied, that accompany this product.

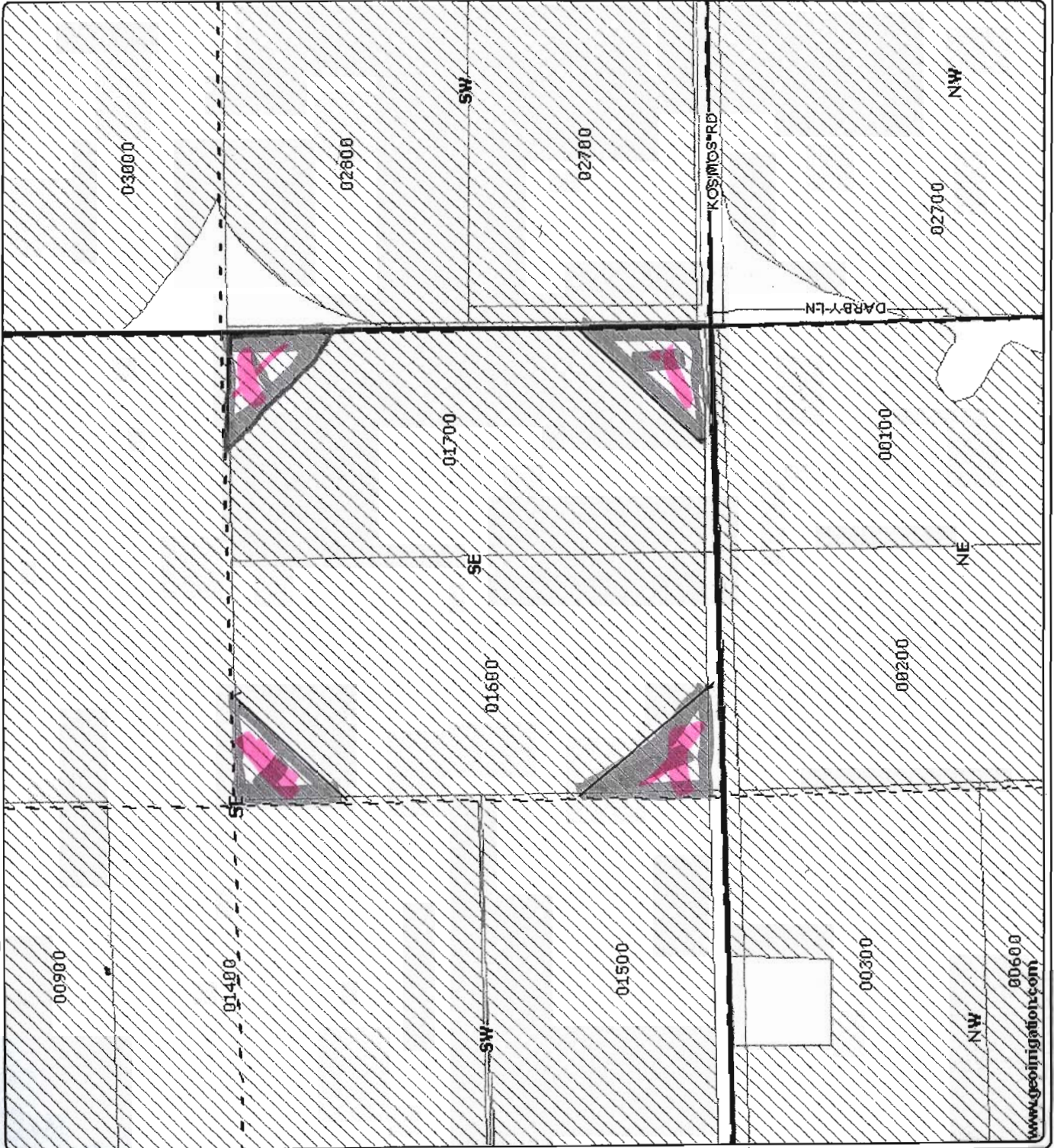
Stanfield Irrigation District

T 4N R 29E SEC 11
 TX LT 1600 - 2.0; TX LT 1700 -
 2.0

- District Boundary
- Highways
- Major Roads
- Roads
- Road Labels
- Township Range
- Sections
- Section Labels
- Quarters
- Quarter Labels
- Quarter Quarters
- Quarter Quarter Labels
- Lot Labels
- Taxlots
- POU District Primary
- POU District Supplemental
- NHD Waterbody
- NHD Stream/River Area

RECEIVED
 FEB 19 2009
 WATER RESOURCES DEPT
 SALEM, OREGON

Scale 1" = 400'
 Created: 2/16/2009



00600
 www.geoinformation.com

DISCLAIMER: This map is intended for display purposes only and is not intended for any legal representations. There are no warranties, expressed or implied, that accompany this product.

Stanfield Irrigation District

T 4N R 29E SEC 23
 TX LT 100 - 3.29; TX LT 2800 -
 .6; TX LT 2800 6.7

- District Boundary
- Highways
- Major Roads
- Roads
- Road Labels
- Township Range
- Sections
- Section Labels
- Quarters
- Quarter Labels
- Quarter Quarters
- Quarter Quarter Labels
- Lot Labels
- Taxlots
- POU District Primary
- POD District Supplemental
- NHD Waterbody
- NHD Stream/River Area

RECEIVED

FEB 19 2009

WATER RESOURCES DEPT
 SALEM, OREGON



Scale 1" = 400'
 Created: 2/16/2009



www.geoimaging.com

DISCLAIMER: This map is intended for display purposes only and is not intended for any legal representations. There are no warranties, expressed or implied, that accompany this product.

T 10734

Stanfield Irrigation District

T 4N R 29E SEC 28
TX LT 2000 - 9.0

- District Boundary
- Highways
- Major Roads
- Roads
- Road Labels
- Township Range
- Sections
- Section Labels
- Quarters
- Quarter Labels
- Quarter Quarters
- Quarter Quarter Labels
- Lot Labels
- Taxlots
- POU District Primary
- POU District Supplemental
- NHD Waterbody
- NHD Stream/River Area

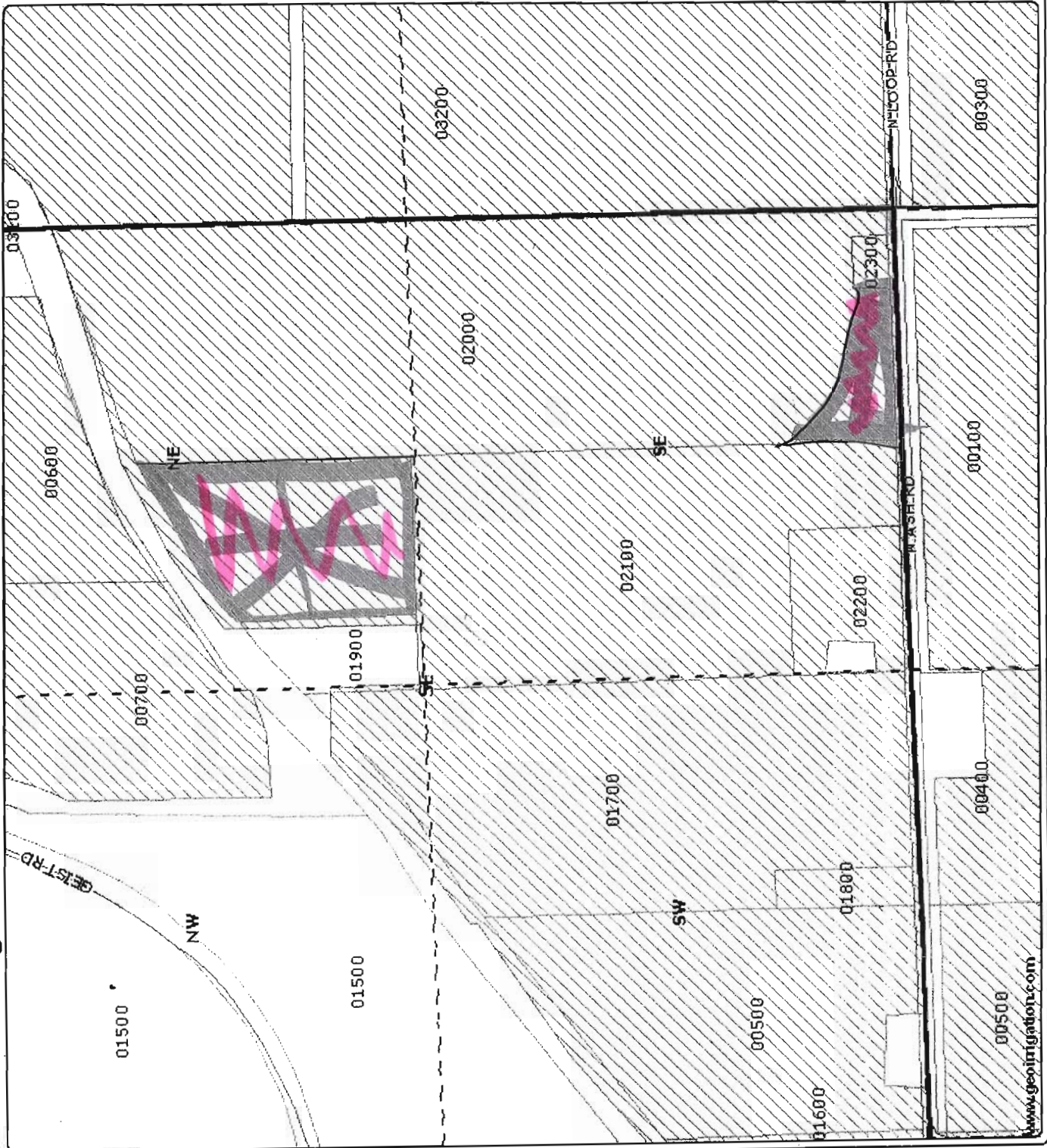
RECEIVED

FEB 19 2009

WATER RESOURCES DEPT
SALEM, OREGON



Scale 1" = 400'
Created: 2/16/2009



www.stanfieldirrigation.com

DISCLAIMER: This map is intended for display purposes only and is not intended for any legal representations. There are no warranties, expressed or implied, that accompany this product.

T 10784

Stanfield Irrigation District

T 4N R 29E SEC 33
 TX LT 300 - 5.0; TX LT 1801 -
 10.37

- District Boundary
- Highways
- Major Roads
- Roads
- Road Labels
- Township Range
- Sections
- Section Labels
- Quarters
- Quarter Labels
- Quarter Quarters
- Quarter Quarter Labels
- Lot Labels
- Taxlots
- POU District Primary
- POU District Supplemental
- NHD Waterbody
- NHD Stream/River Area

RECEIVED

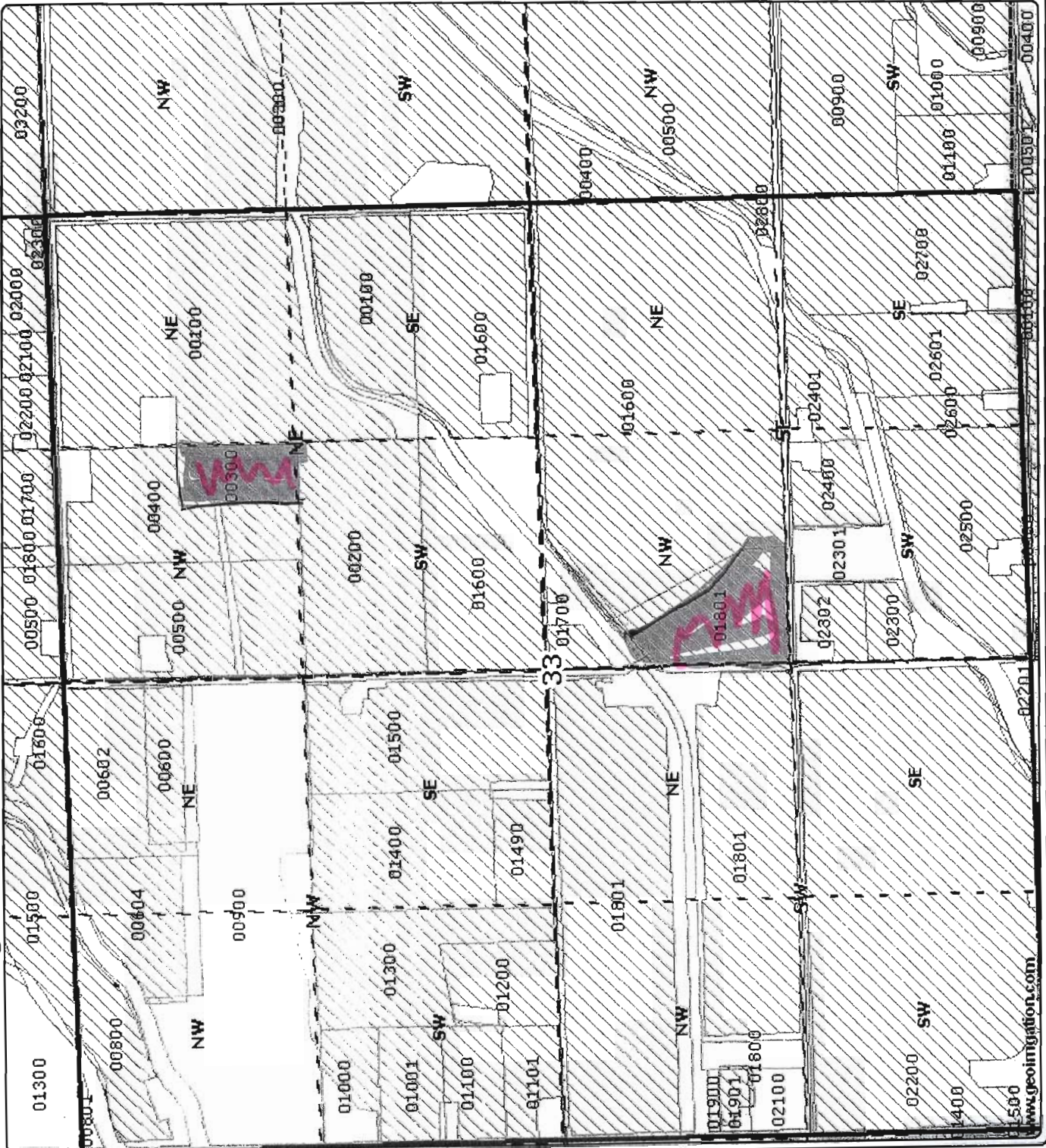
FEB 19 2009

WATER RESOURCES DEPT
 SALEM, OREGON



Scale 1" = 800'

Created: 2/16/2009



DISCLAIMER: This map is intended for display purposes only and is not intended for any legal representations. There are no warranties, expressed or implied, that accompany this product.

10734

Stanfield Irrigation District

T 4N R 29E SEC 34
 TX LT 300 - 5.37; TX LT 500 -
 3.14; TX LT 600 - 8.83

- District Boundary
- Highways
- Major Roads
- Roads
- Road Labels
- Township Range
- Sections
- Section Labels
- Quarters
- Quarter Labels
- Quarter Quarters
- Quarter Quarter Labels
- Lot Labels
- Taxlots
- POU District Primary
- POU District Supplemental
- NHD Waterbody
- NHD Stream/River Area

RECEIVED

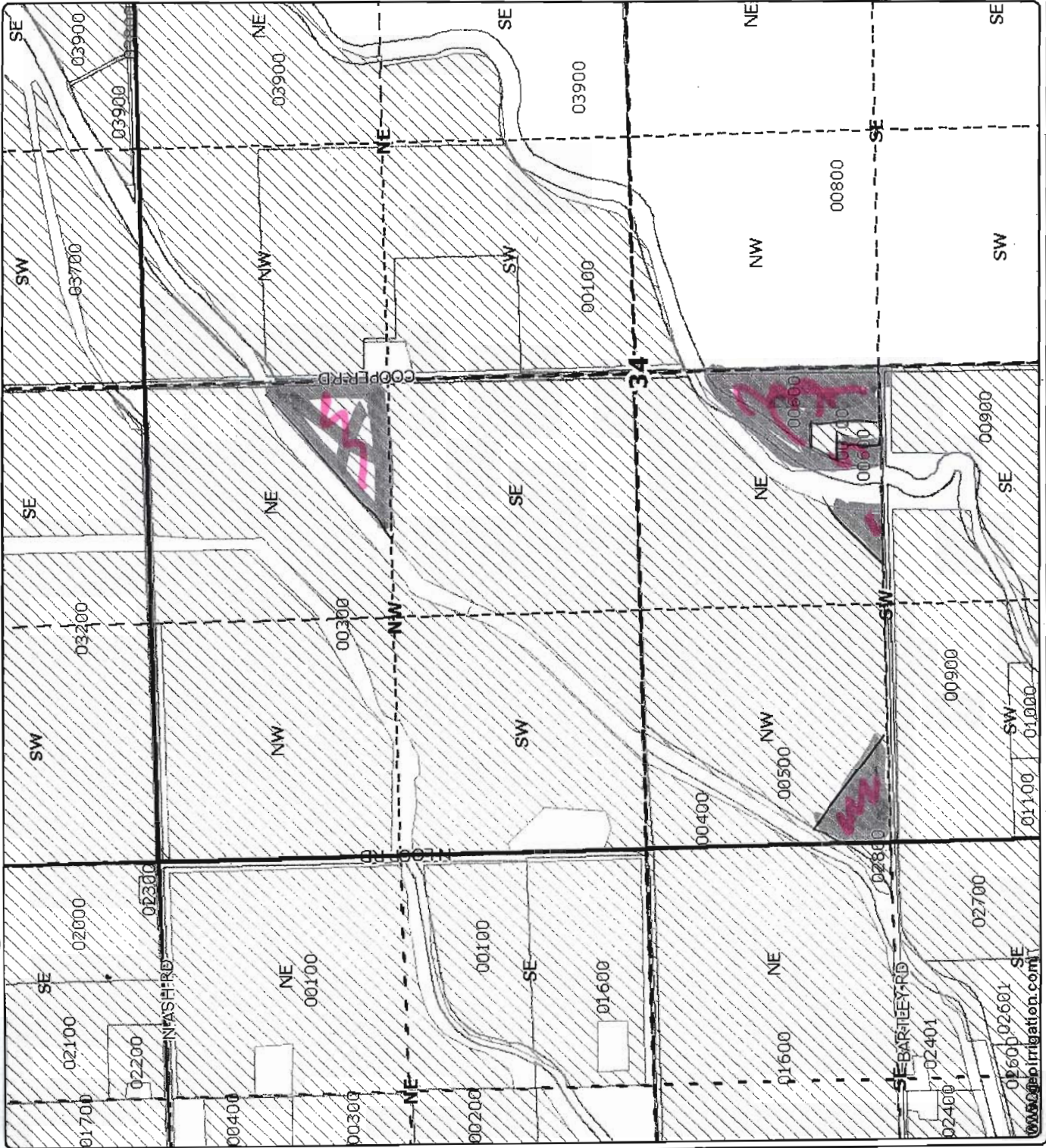
FEB 19 2009

WATER RESOURCES DEPT
 SALEM, OREGON



Scale 1" = 800'

Created: 2/16/2009



DISCLAIMER: This map is intended for display purposes only and is not intended for any legal representations. There are no warranties, expressed or implied, that accompany this product.

T 10784

Stanfield Irrigation District

T 4 R29E SEC 34

1905 - 95.30acs ; 1965 - 6.7acs

- District Boundary
- Highways
- Major Roads
- Roads
- Road Labels
- Township Range
- Sections
- Section Labels
- Quarters
- Quarter Labels
- Quarter Quarters
- Quarter Quarter Labels
- Lot Labels
- Taxlots
- POU District Primary
- POU District Supplemental
- NHD Waterbody
- NHD Stream/River Area

RECEIVED

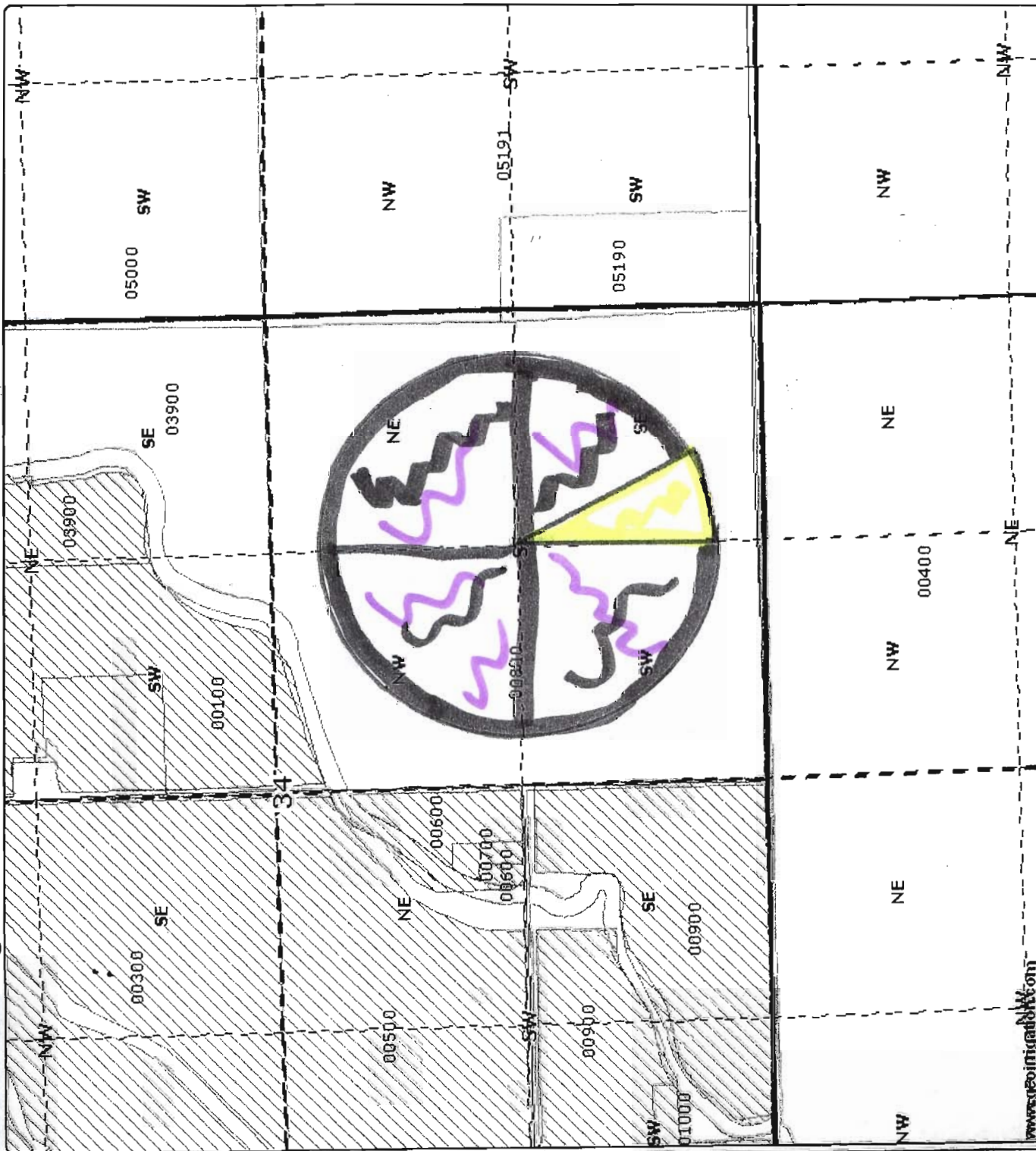
FEB 19 2009

WATER RESOURCES DEPT
SALEM, OREGON



Scale 1" = 800'

Created: 2/16/2009



www.geoimaging.com
DISCLAIMER: This map is intended for display purposes only and is not intended for any legal representations. There are no warranties, expressed or implied, that accompany this product.

T 10784



STANFIELD IRRIGATION DISTRICT



February 19, 2009

Subject: Transfer Application w/Interior # Tt-A-2009 - Mills

To Whom It May Concern:

I, Ray Kopacz, Stanfield Irrigation District, state, on behalf of the landowners involved in this 2009 irrigation season District temporary transfer, that several portions of the transfer contain supplemental water right from groundwater and, for the record, state that these portions will not be used on either the FROM lands or TO lands during the 2008 season.

Those water rights are described as portions of the following Certificate numbers:

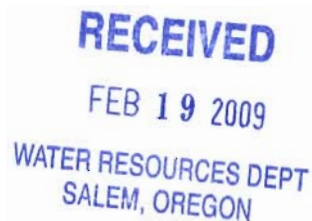
38733 – 37834 – 53479 – 55238 – 74882 - 74883

These portions are supplemental to either of the two (2) Districts primary underlying (1905 or 1965) Stanfield Irrigation District rights being transferred.

The map that accompanies the application describes the locations of these six (6) groundwater rights that will not be used.

Thank you,

Ray Kopacz – District Manager



100 W COE – P O BOX 416 • STANFIELD OREGON • 97875
PHONE: 541-449-3272 • FAX: 541-449-1239

T 10784

Certificate # 74883 Lands not to be watered

4 N 29 E 34	300 NE NW	5.37
4 N 29 E 34	800 NE SW	8.83
4 N 29 E 34	500 NE SW	1.34
4 N 29 E 34	500 NW SW	1.80

Certificate #74882 Land not to be watered

4 N 29 E 28	2200 NE SE	6.00
4 N 29 E 28	2200 SE SE	3.00

Certificate # 53479 Land not to be watered

4 N 29 E 32 27	3200 SE SW	1.3
----------------	------------	-----

T 10784

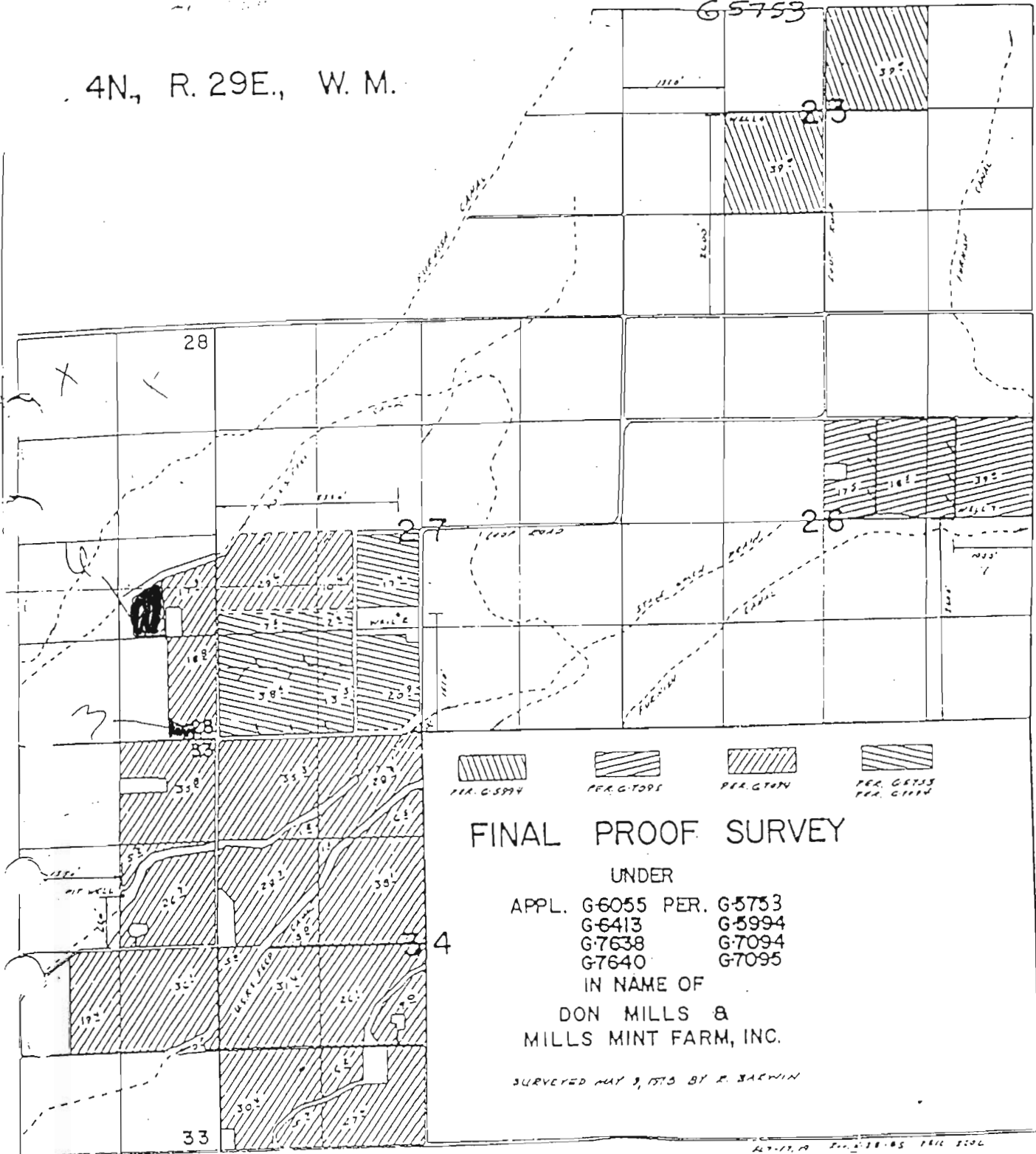
RECEIVED




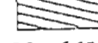
FEB 19 2009

WATER RESOURCES DEPT
SALEM, OREGON

4N., R. 29E., W. M.

G 5753 53479



- 
 PER. G-5994
- 
 PER. G-7095
- 
 PER. G-7094
- 
 PER. G-7093
 PER. G-7092

FINAL PROOF SURVEY

UNDER

APPL. G-6055 PER. G-5753
 G-6413 G-5994
 G-7638 G-7094
 G-7640 G-7095

IN NAME OF

DON MILLS &
 MILLS MINT FARM, INC.

SURVEYED MAY 9, 1973 BY R. BAERWIN

T 10784.

4N 29E WM 28 TX LT 2200 NE SE 6.0
 4N 29E WM 29 TX LT 2200 SE SE 3.0

CERTIFICATE # 74882

RECEIVED

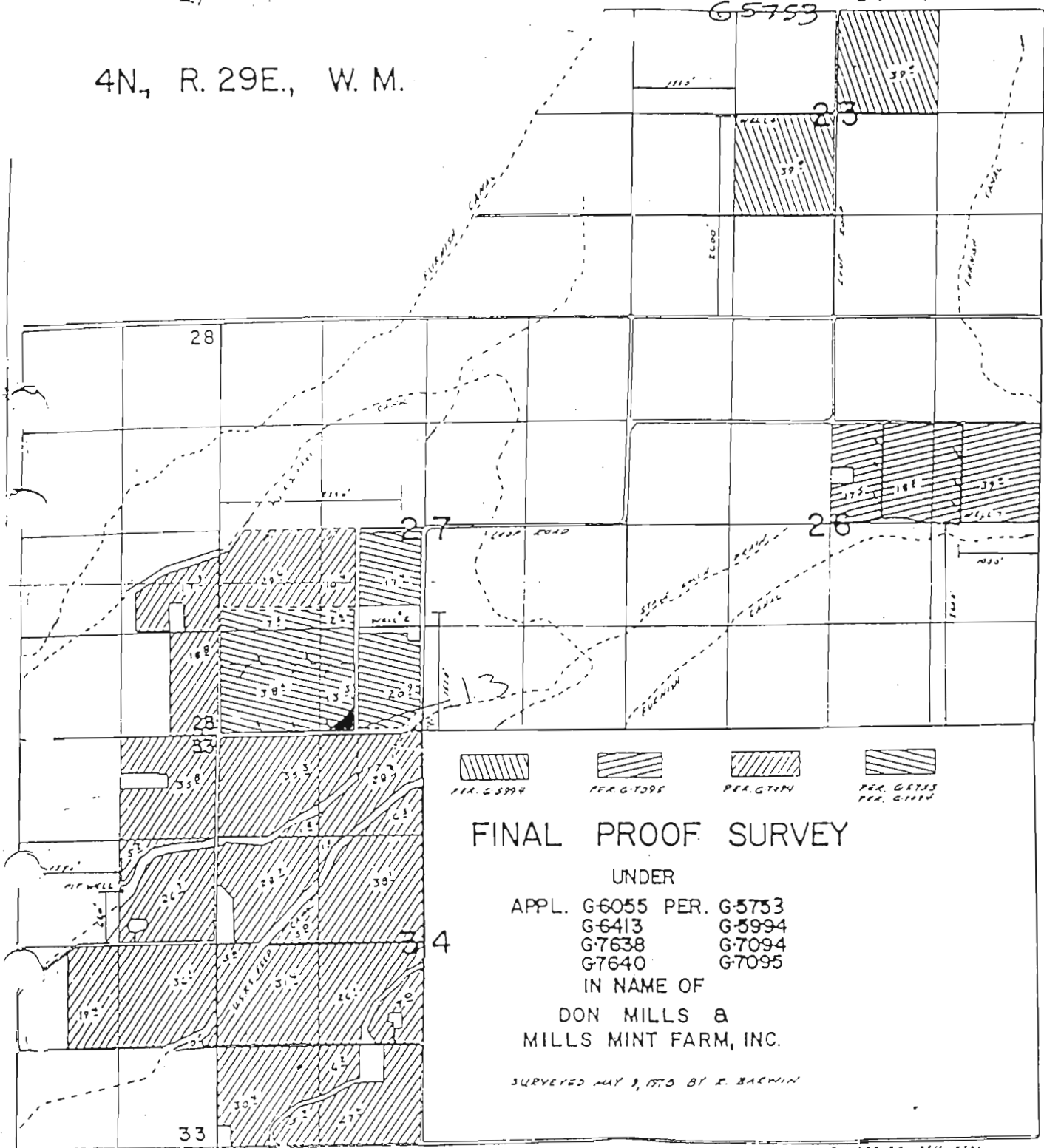
FEB 19 2009

WATER RESOURCES DEPT
 SALEM, OREGON

4N, R. 29E., W. M.

53479

G-5753



- 
 PER. G-5994
- 
 PER. G-7095
- 
 PER. G-7114
- 
 PER. G-7553
 PER. G-7114

FINAL PROOF SURVEY

UNDER

APPL. G-6055 PER. G-5753
 G-6413 G-5994
 G-7638 G-7094
 G-7640 G-7095

IN NAME OF

DON MILLS &
 MILLS MINT FARM, INC.

SURVEYED JUL 9, 1973 BY E. BACWIN

4N 29E WM 27 TX LT 3200 SE SW 1.3
 CERTIFICATE # 53479

RECEIVED

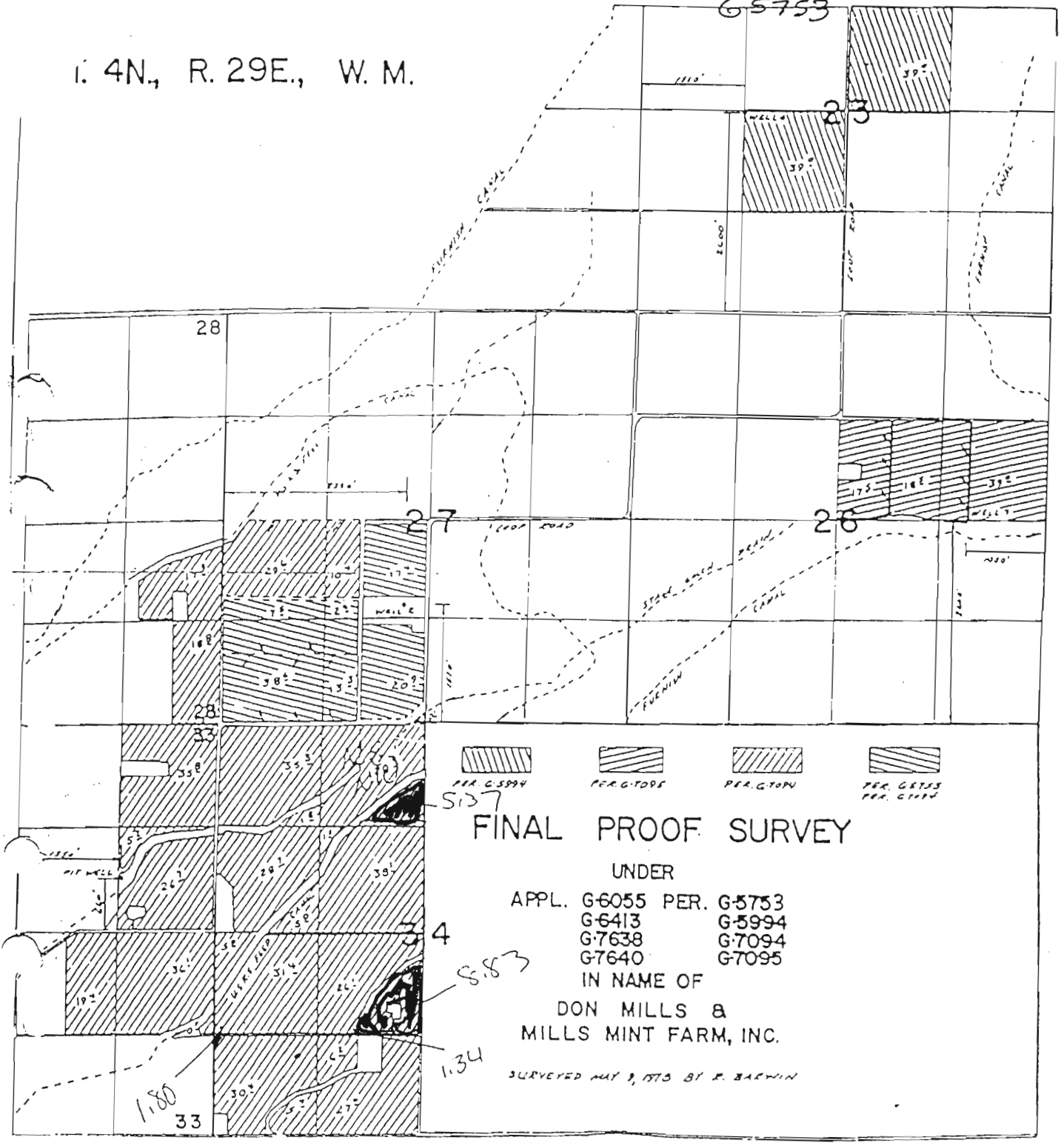
FEB 19 2009

WATER RESOURCES DEPT
 SALEM, OREGON

T 10784

1. 4N., R. 29E., W. M.

G 5753 53479



-  PER. G-5994
-  PER. G-7095
-  PER. G-7094
-  PER. G-5753
PER. G-5754

FINAL PROOF SURVEY

UNDER

APPL. G-6055 PER. G-5753
 G-6413 G-5994
 G-7638 G-7094
 G-7640 G-7095

IN NAME OF

DON MILLS &
 MILLS MINT FARM, INC.

SURVEYED MAY 9, 1975 BY P. BARWIN

4N 29E WM 34 TX LT 300 NENW 5.37
 4N 29E WM 34 TX LT 800 NENW 8.83
 4N 29E WM 34 TX LT 500 NENW 1.34
 4N 29E WM 34 TX LT 500 NENW 1.80

CERTIFICATE # 74883

RECEIVED

FEB 19 2009

WATER RESOURCES DEPT
 SALEM, OREGON

T-10784