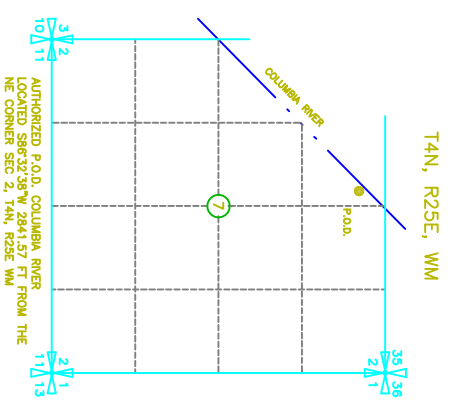


2009 BAKER PRODUCE SOUTH, INC  
 TEMPORARY TRANSFER APPLICATION  
 FROM MAP  
 INVOLVING CERTIFICATES 68536,  
 61848 & 61849  
 T2&3N, R26E WM  
 MORROW CO

- FROM**
- 303.1 AC PRIMARY COLUMBIA RIVER CERT 68536
  - 471.6 AC PRIMARY WELLS #1 & #3 CERT 61848 SUPPLEMENTAL WELL #2 & #3 CERT 61849
  - 228.6 AC PRIMARY WELLS #1 & #3 CERT 61848 SUPPLEMENTAL WELL #2 & #3 CERT 61849
  - 1003.3 AC

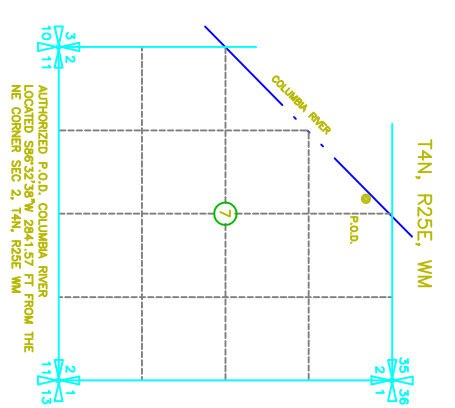
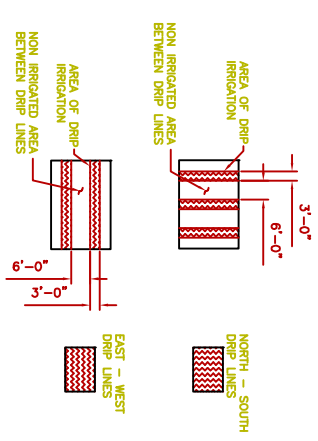
AUTHORIZED P.O.D. LOCATED S86°32'38"W 2841.57 FT FROM THE NE CORNER SEC 2, T4N, R25E WM  
 AUTHORIZED P.O.A. WELL #1 LOCATED 2470'N AND 2910'E FROM THE SW COR SEC 20 T2N, R26E, WM  
 WELL #2 LOCATED 100'S AND 1350'W FROM THE NE COR SEC 17 T2N, R26E, WM  
 WELL #3 LOCATED 30'S AND 30'W FROM THE E 1/2 COR SEC 18 T2N, R26E, WM



2009 BAKER PRODUCE SOUTH, INC  
 TEMPORARY TRANSFER APPLICATION  
 TO MAP  
 INVOLVING CERTIFICATES 68536,  
 61848 & 61849  
 T2&3N, R26E WM  
 MORROW CO

- TO**
- 303.1 AC PRIMARY COLUMBIA RIVER CERT 68536
  - 471.6 AC PRIMARY WELLS #1 & #3 CERT 61848 SUPPLEMENTAL WELL #2 & #3 CERT 61849
  - 228.6 AC PRIMARY WELLS #1 & #3 CERT 61848 SUPPLEMENTAL WELL #2 & #3 CERT 61849
  - 1003.3 AC

AUTHORIZED P.O.D. LOCATED S86°32'38"W 2841.57 FT FROM THE NE CORNER SEC 2, T4N, R25E WM  
 AUTHORIZED P.O.A. WELL #1 LOCATED 2470'N AND 2910'E FROM THE SW COR SEC 20 T2N, R26E, WM  
 WELL #2 LOCATED 100'S AND 1350'W FROM THE NE COR SEC 17 T2N, R26E, WM  
 WELL #3 LOCATED 30'S AND 30'W FROM THE E 1/2 COR SEC 18 T2N, R26E, WM



TL 400  
 FINLEY BUTTES  
 LANDFILL CO.