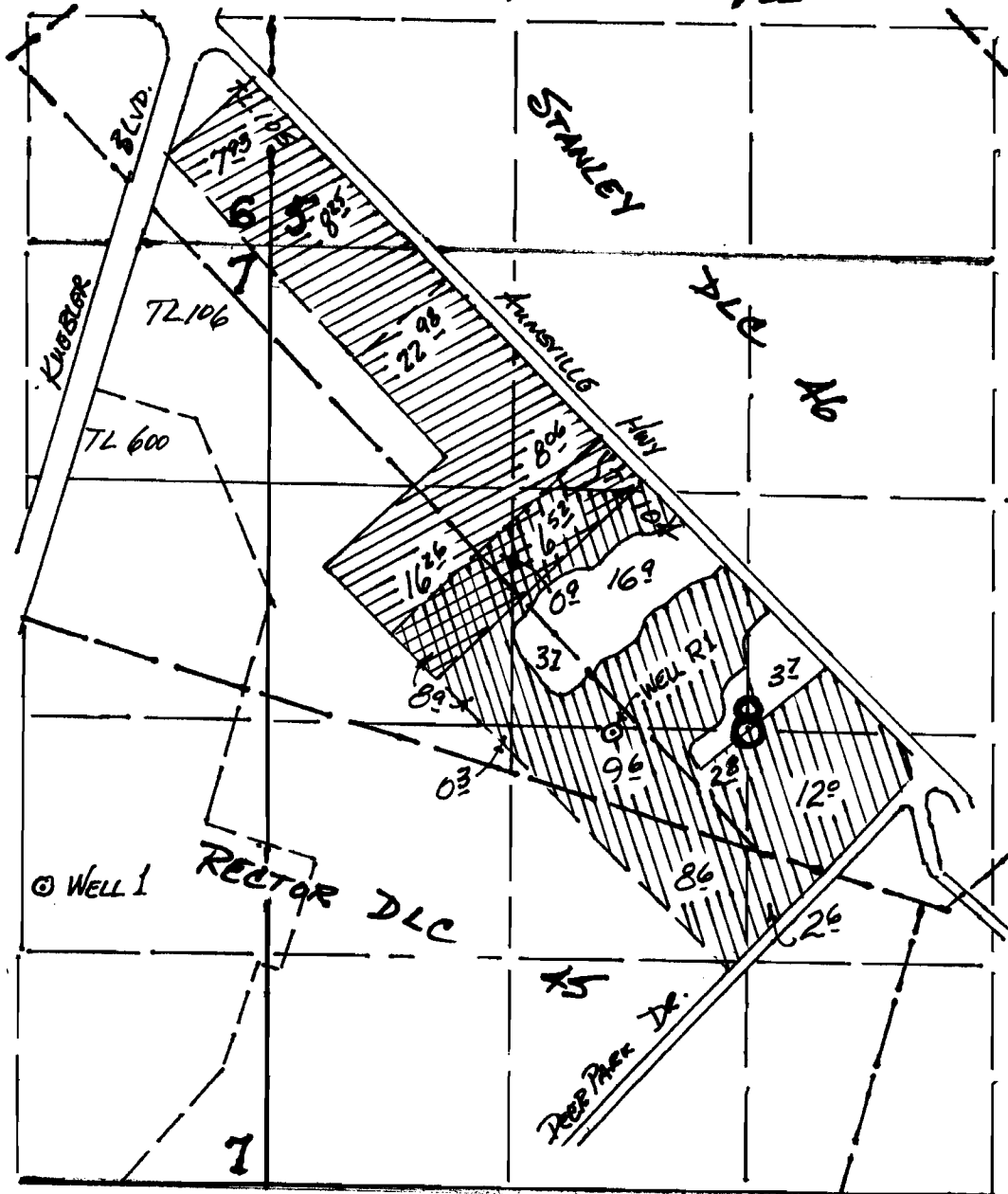


# T. 8 S., R. 2 W., W.M.



GR Reg#	Old Well	Location	New Well	Location
693	1	3610' S & 1220' W	R2	2700' S & 1900' E

Measurements from the SW Corner, Section 5

Revised Place of Use -  
Original Place of Use



T 10797

## Map to Accompany Application for Modification of Groundwater Registration GR693

in the name of

State of Oregon - Department of Corrections

