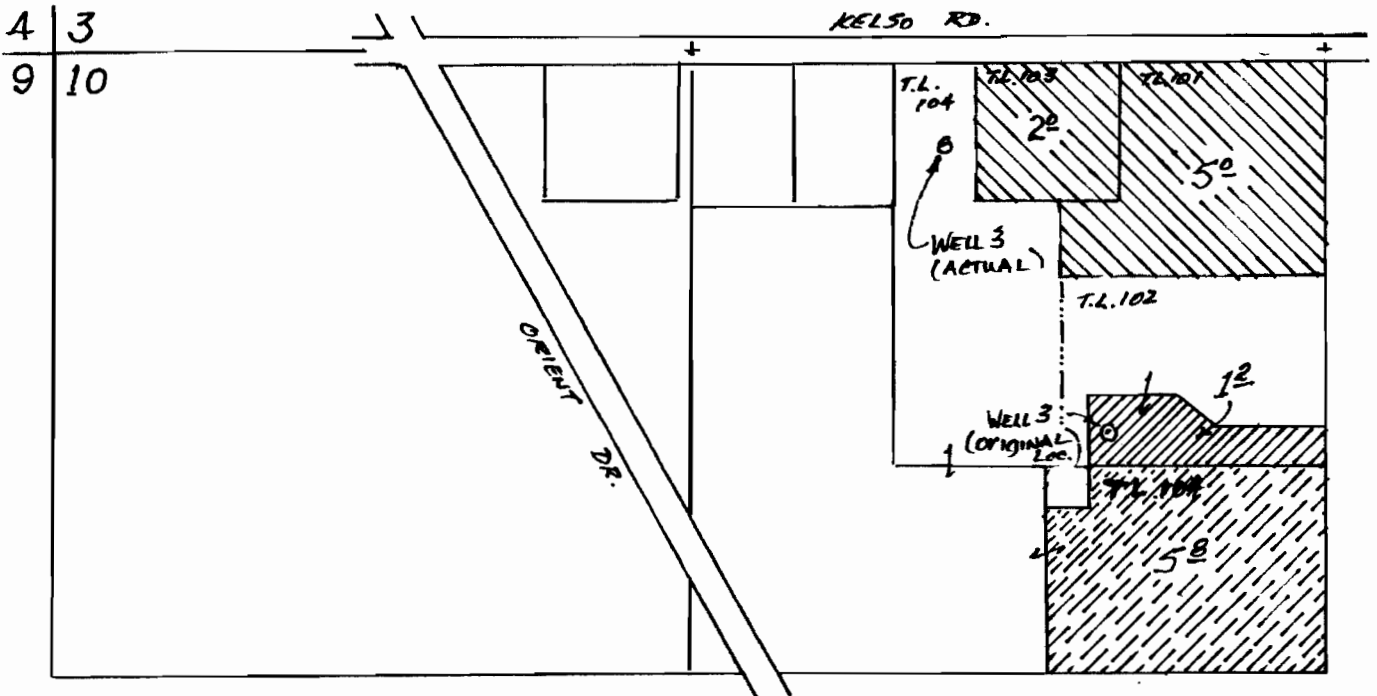
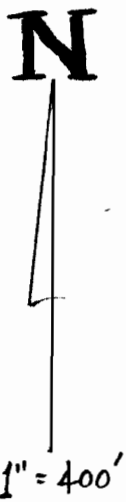





PERMIT AMENDMENT APPLICATION MAP  
 for PATTERSON NURSERY SALES, INC.  
 N 1/2 NW 1/4 Section 10, T.2S, R.4E, WM.  
 PERMIT G-12996



WELL LOCATIONS: ORIGINAL (PERMIT) - S. 29° 11' 50" W. - 929.66';  
 ACTUAL - 210' S. & 790' W., BOTH FROM N 1/4 COR., SEC. 10



-  "FROM" LAND
-  "TO" LAND
-  "TO" - DEFICIENCY IN RATE (PERMIT G-11792)

T 13801

02/2008 *APC*