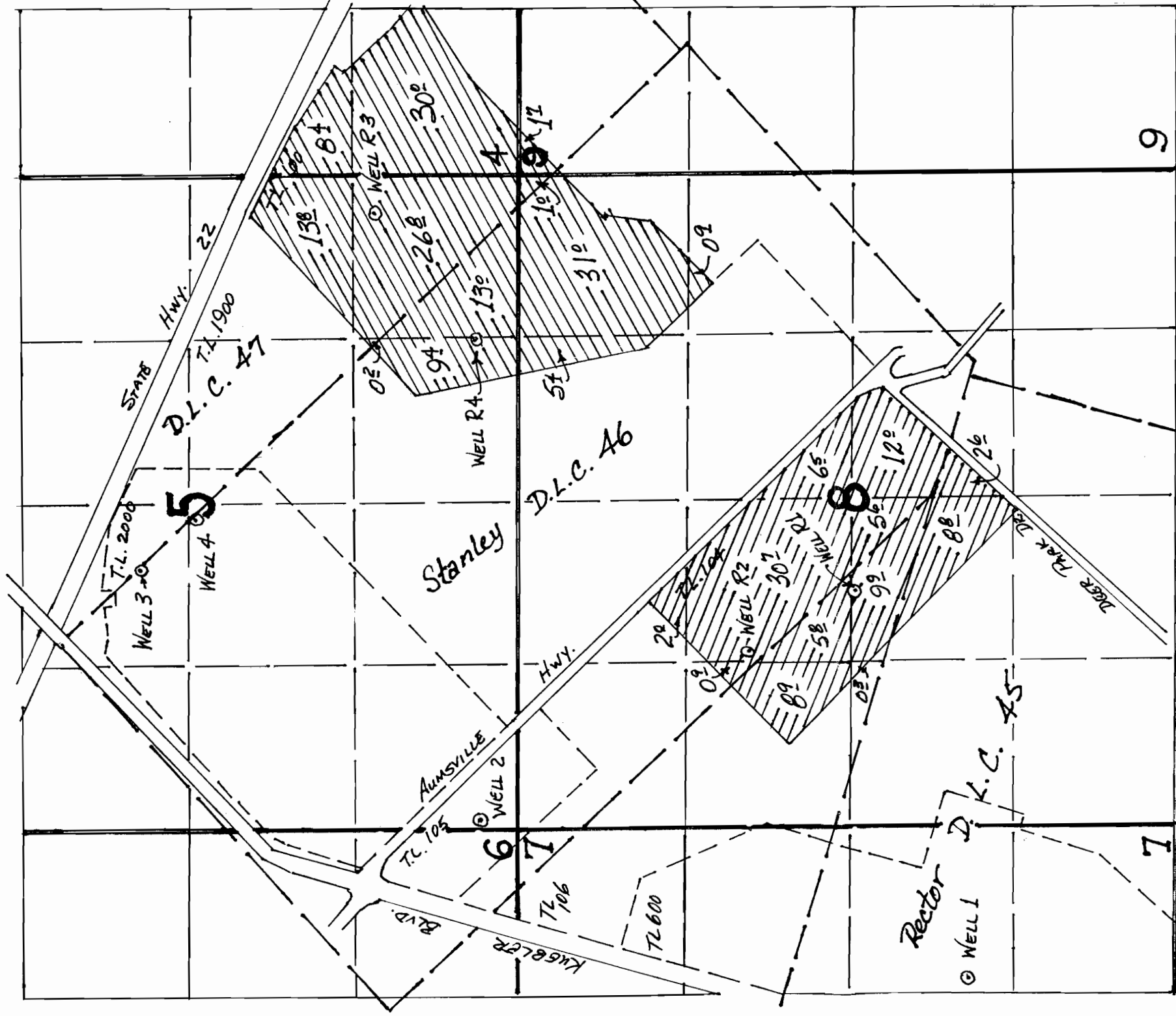


T 8 S, R. 2W, W.M.



1 10778

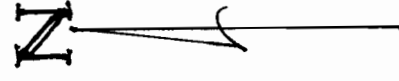
GR Reg#	Old Well	Location	New Well	Location
692	2	300°N & 80°E	R2	1840'S & 1420°E
691	3	3020°N & 2100°E	R3	1160°N & 4970°E
690	4	2580°N & 2520°E	R4	330°N & 3960°E

All measurements from the SW Corner, Section 5

Revised Places of Use – GR 690 & 691
GR 692



T 10778



1" = 1000'

Map to Accompany Applications for Modification of Groundwater Registrations GR690, 691, & 692

in the name of

State of Oregon – Department of Corrections