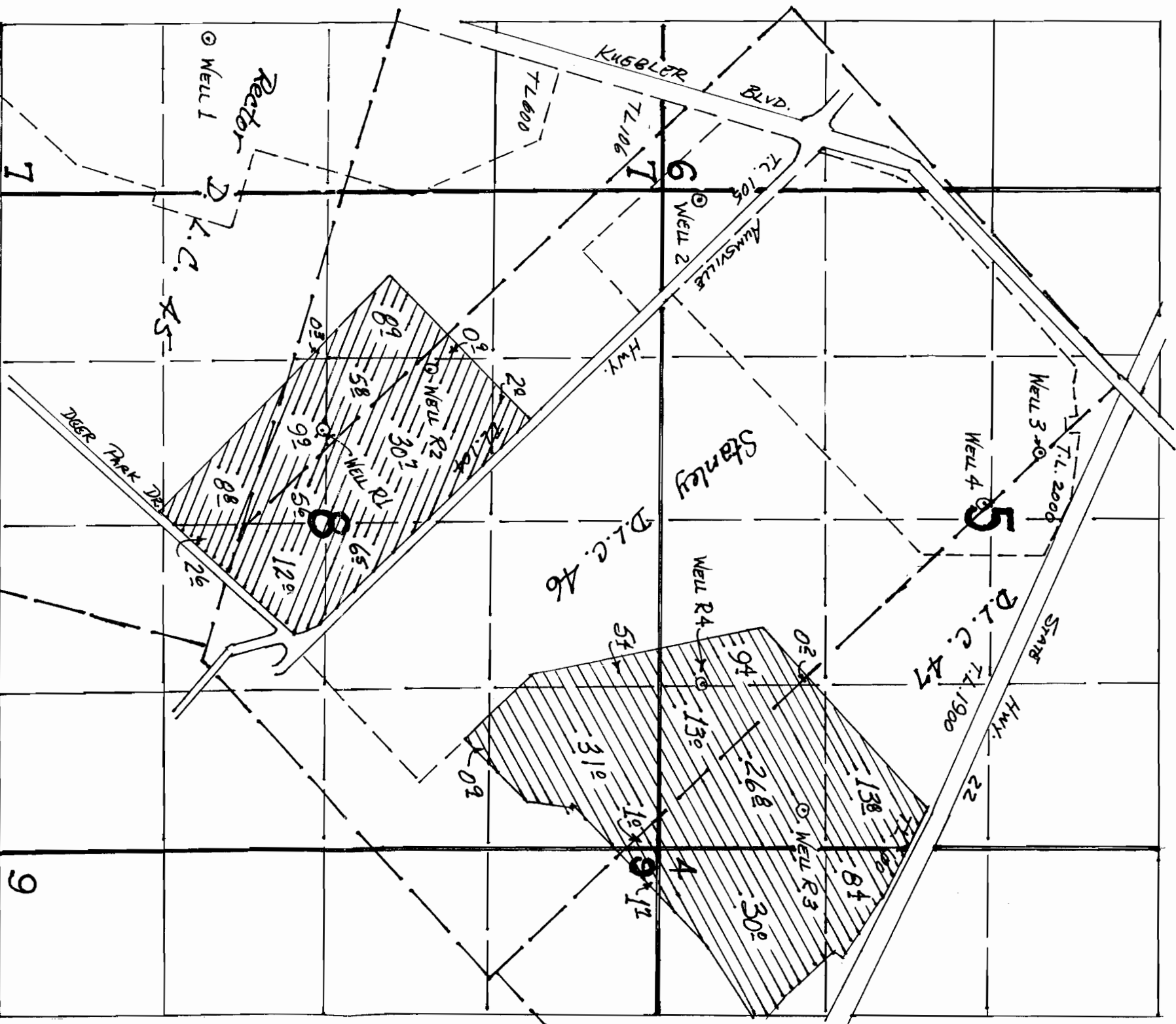


T.8 S. R. 2 W., W.M.



GR Reg#	Old Well	Location	New Well	Location
692	2	300°N & 80°E	R2	1840°S & 1420°E
691	3	3020°N & 2100°E	R3	1160°N & 4970°E
690	4	2580°N & 2520°E	R4	330°N & 3960°E

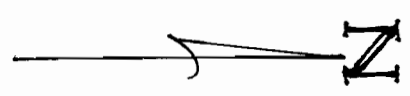
All measurements from the SW Corner, Section 5

Revised Places of Use – GR 690 & 691
GR 692



T 10803

1" = 1000'



Map to Accompany Applications for Modification
of Groundwater Registrations GR690, 691, & 692
in the name of
State of Oregon – Department of Corrections