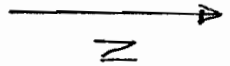


THIS MAP WAS PREPARED FOR ASSESSMENT PURPOSE ONLY

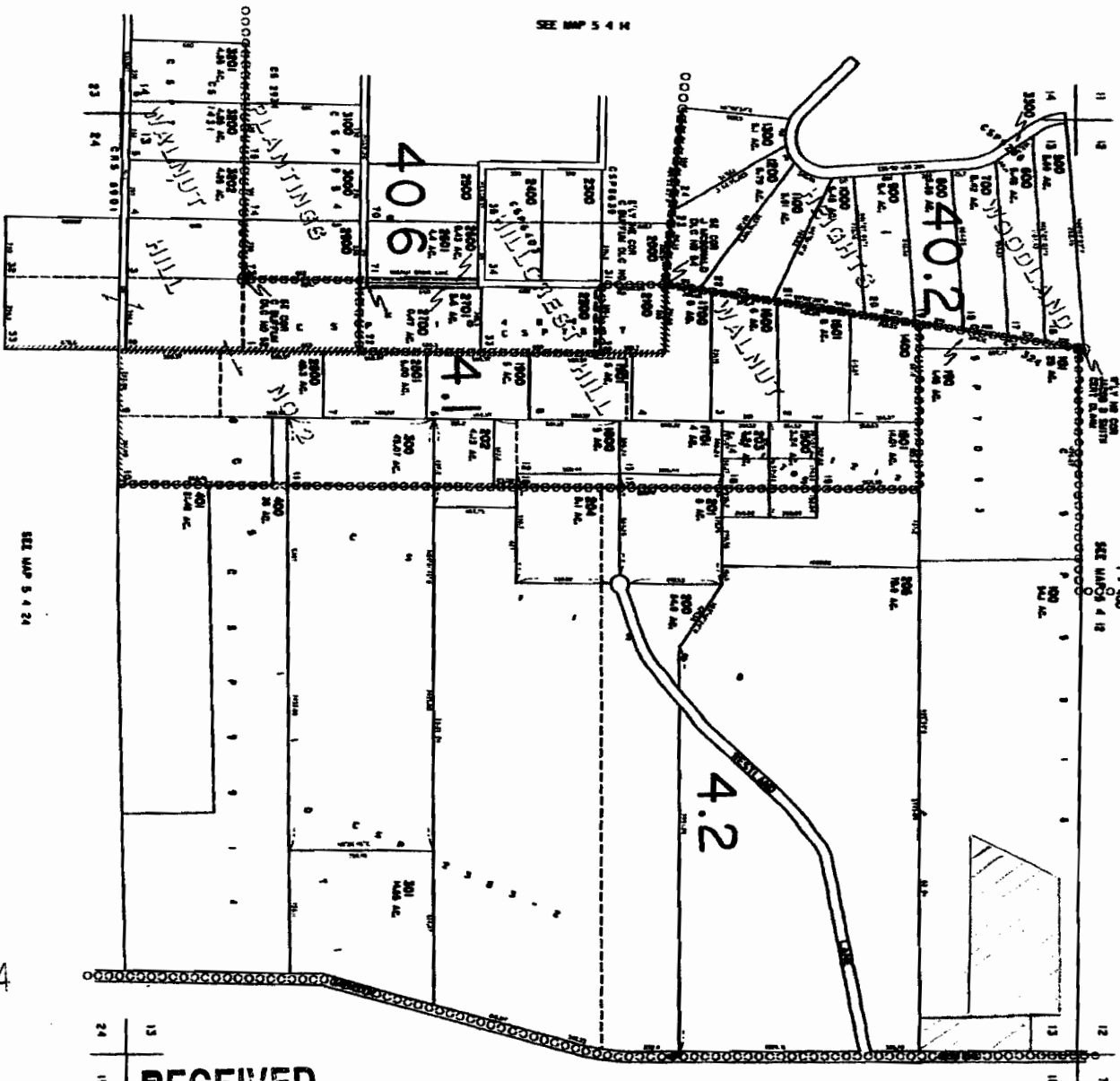
SECTION 13 T5S R4W W.M.
YAMHILL COUNTY

5 4 13



From: 11-2-01
NE 1/4 NE 1/4
Sec 13
T-5-S
R-4-W
W.M.

Scale 1" = 1000'



T 10824

RECEIVED

MAR 17 2009

WATER RESOURCES DEPT
SALEM, OREGON

5 4 13

CANCELLED