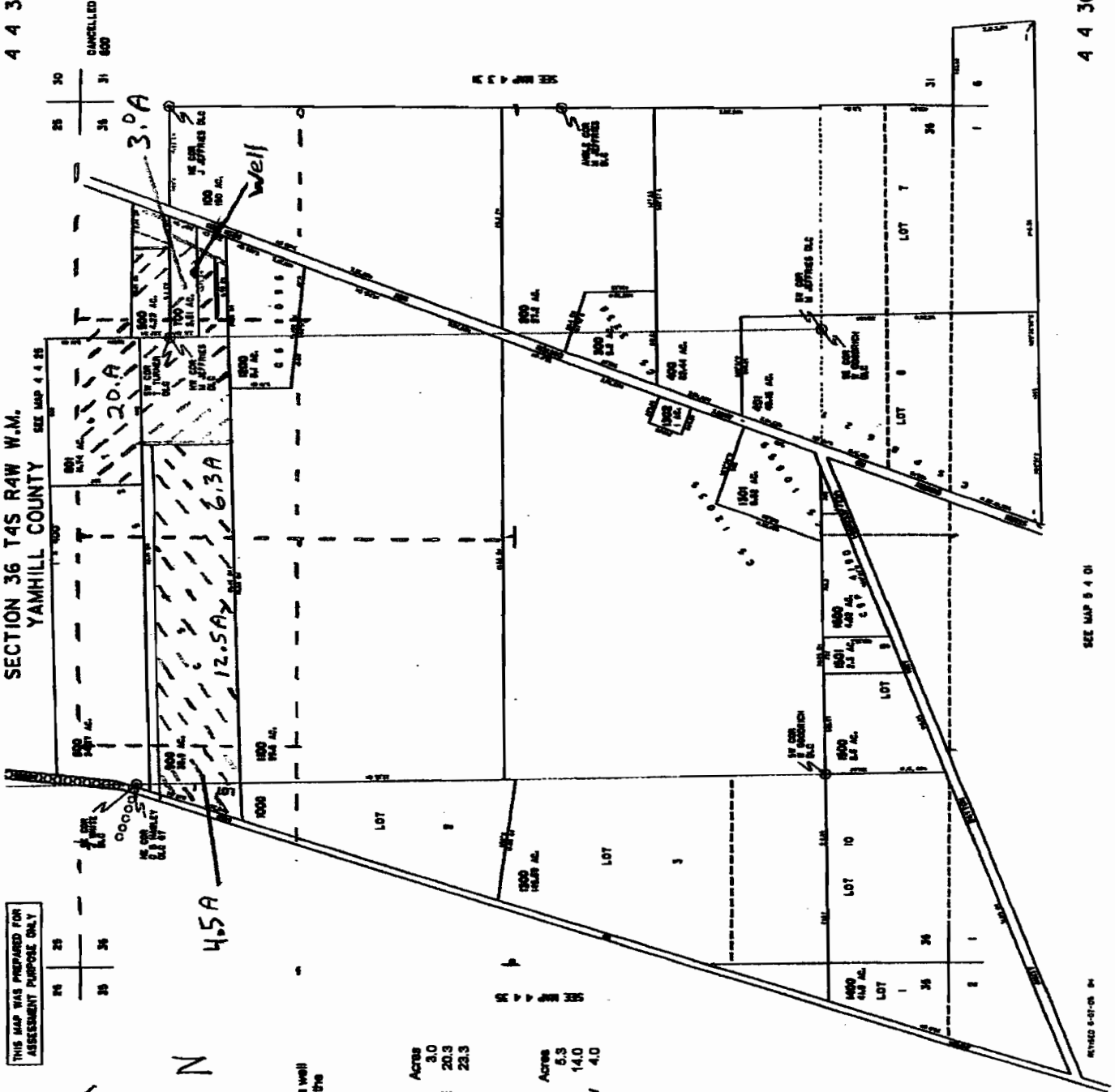


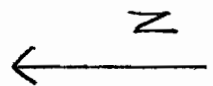
SECTION 36 T4S R4W W.M.
YAMHILL COUNTY

SEE MAP 4 4 25



THIS MAP WAS PREPARED FOR
ASSESSMENT PURPOSE ONLY

24 26
28 30



2008 Goodrich to Goodrich

Location of primary point of diversion, a well
970 feet west and 900 feet south from the
NE corner Section 36
T4S R4W

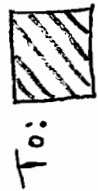
From

Township	Range	Mer	Section	1/4	Acres
48	4W	WM	36	NE	3.0
48	4W	WM	36	NW	20.3
Total					23.3

To

Township	Range	Mer	Section	1/4	Acres
48	4W	WM	36	NW	6.3
48	4W	WM	36	NE	14.0
48	4W	WM	36	NW	4.0

1 inch equals 1000 feet



To:



From:

SEE MAP 5 4 01

T 10823

RECEIVED

MAR 17 2009

WATER RESOURCES DEPT
SALEM, OREGON