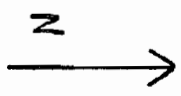


THIS MAP WAS PREPARED FOR ASSESSMENT PURPOSE ONLY

SECTION 31 T4S R3W W.M.
YAMHILL COUNTY
T. 43N

4 3 31



N.T.S. COM
RECYCLED
PAPER

2000 Kiewit to Korpenske

FROM:

Location of ordinary right of dedication is 800 feet south and 800 feet east from the NW corner of the SW 1/4 NE 1/4 Section 31 T4S R3W

Location of the easement right of appurtenance is a west located 100 feet north and 800 feet east of the NW corner of the NE 1/4 Section 31 T4S R3W Sec 30

From:

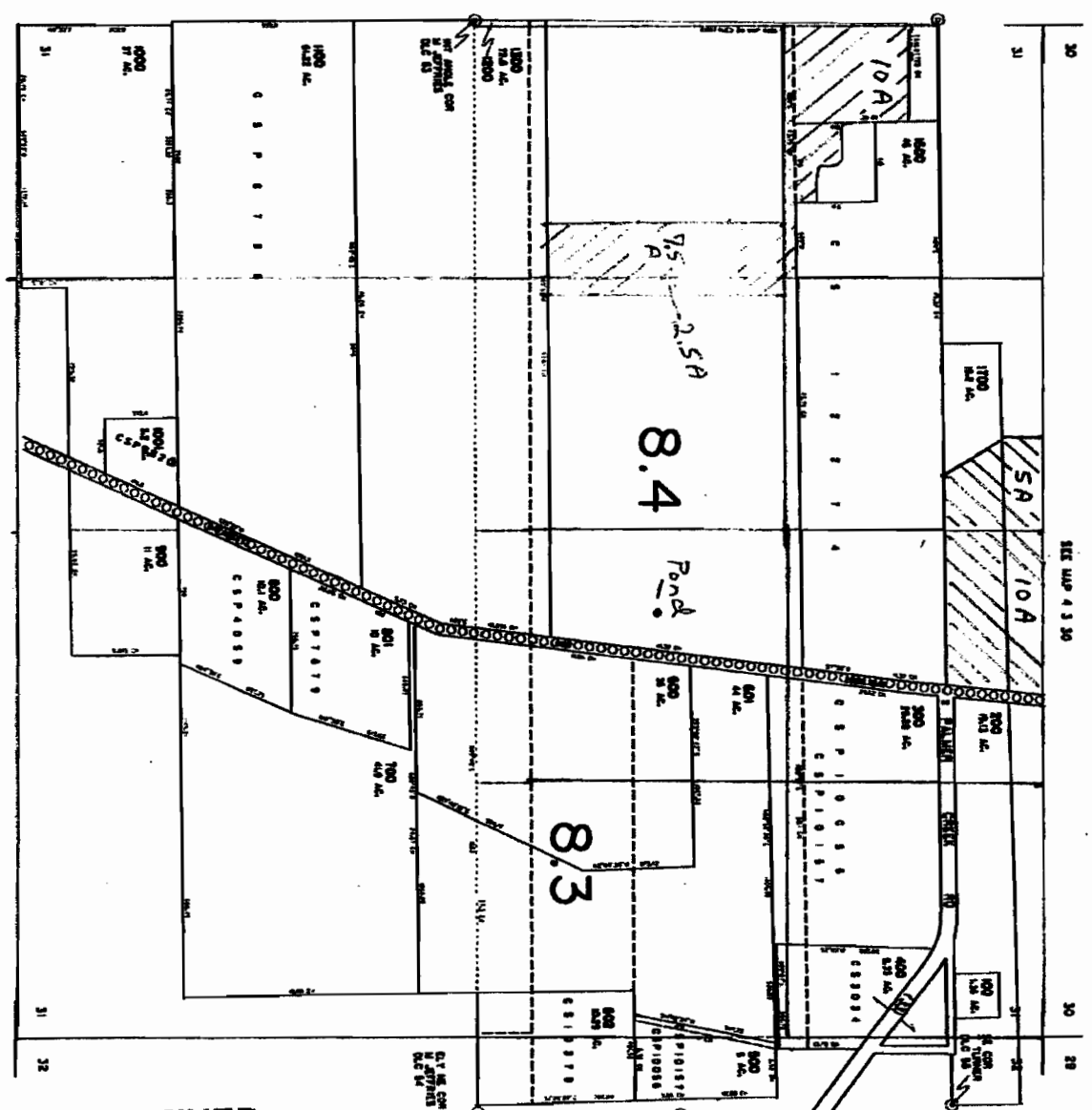
Township Range Mer Section 1/4 1/4 Acres
48 3W NW 10.0
48 3W NE 10.0
48 3W SW 10.0
48 3W SE 10.0
48 4W NW 11.0
48 4W NE 11.0
48 4W SW 11.0
48 4W SE 11.0
Total 84.0

Township Range Mer Section 1/4 1/4 Acres
48 3W NW 10.0
48 3W NE 10.0
48 3W SW 10.0
48 3W SE 10.0
48 4W NW 11.0
48 4W NE 11.0
48 4W SW 11.0
48 4W SE 11.0
Total 84.0

1 inch equals 1000 feet



From:



SEE MAP 5 3 06

RECEIVED

MAR 17 2009

WATER RESOURCES DEPT
SALEM, OREGON

CANCELLED
400
800

1 10821

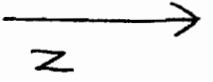
4 3 31

THIS MAP WAS PREPARED FOR
ASSESSMENT PURPOSE ONLY

SECTION 30 T4S R3W W.M.
YAMHILL COUNTY
1" = 400'

4 3 30

CANCELLED
600



2008 (revised to Magnitude
FROM)

Location of primary point of observation is 600 feet south
and 800 feet east from the NW corner of the
T4S R3W
T4S R3W

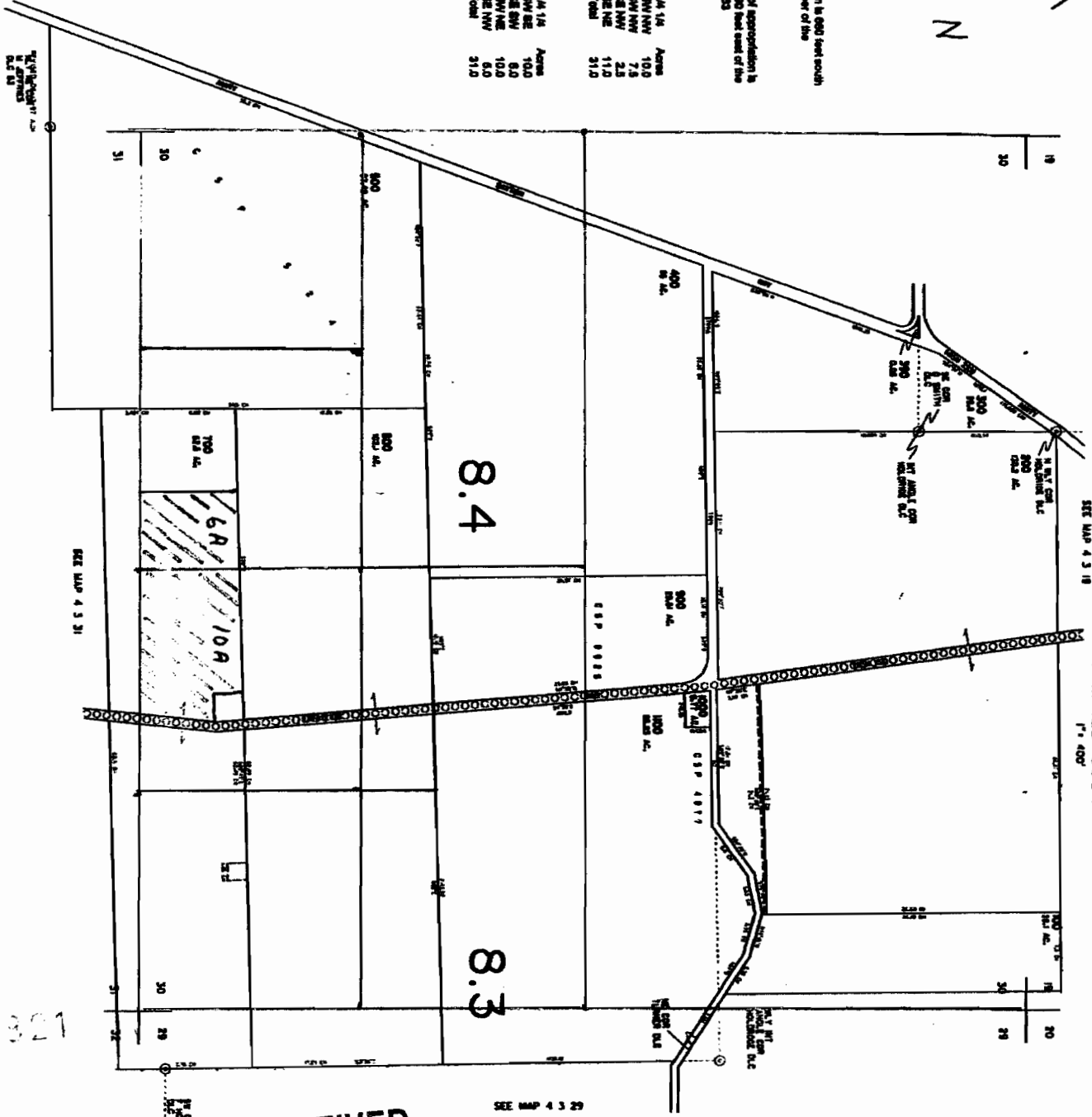
Location of the supplemental point of observation is
a well located 100 feet south and 800 feet east of the
NW corner of the M. Utilities DLI 03
T4S R4W Sec 30

From	To	Range	Mer	Section	Area
Township	48	31W	W44	14, 14	10.0
	48	31W	W44	31 NW NW	7.5
	48	31W	W44	31 SW NW	2.5
	48	31W	W44	31 SE NW	2.5
	48	41W	W44	30 NE NE	11.0
				Total	31.0

1 inch equals 1000 feet

To: 

From: 



RECEIVED

MAR 17 2009

WATER RESOURCES DEPT
SALEM, OREGON

4 3 30

T 10321

THIS MAP WAS PREPARED FOR ASSESSMENT PURPOSES ONLY

SECTION 36 T4S R4W W.M.
YAMHILL COUNTY

SEE MAP 4 4 25

SEE MAP 5 4 01

4 4 36



2000 Knotter to Montgomery

FROM

Location of primary point of observation is 800 feet south and 800 feet east from the NW corner of the SW 1/4 NE 1/4 Section 31 T4S R4W

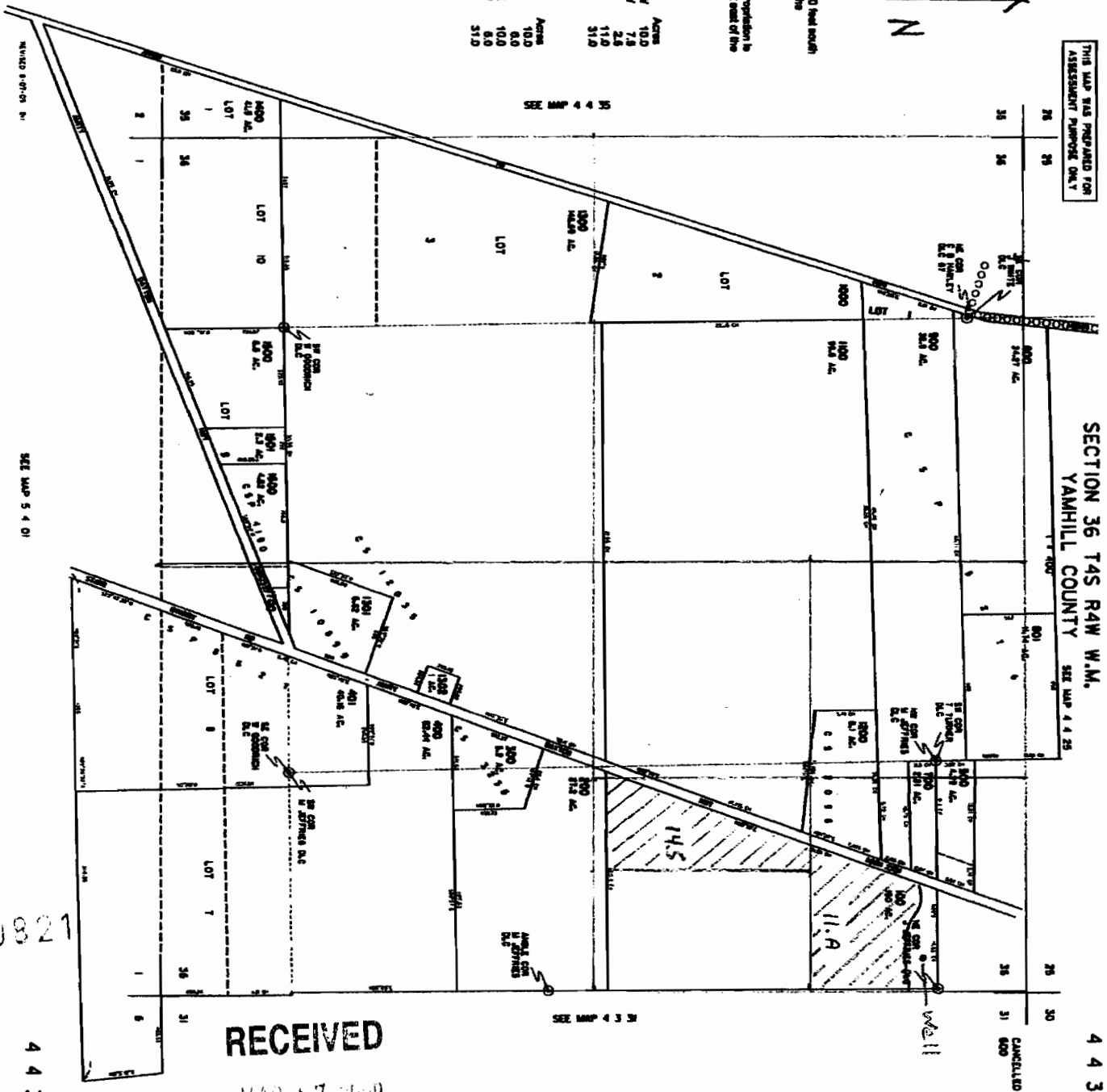
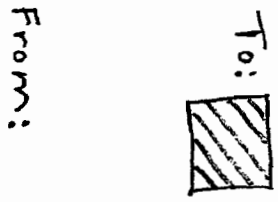
Location of the supplemental point of observation is a well located 100 feet south and 800 feet east of the NW corner of the NE 1/4 Section 31 T4S R4W Sec 28

TO

From	To	Area
48 NW 1/4	48 NW 1/4	10.0
48 SW 1/4	48 SW 1/4	10.0
48 SE 1/4	48 SE 1/4	10.0
48 NE 1/4	48 NE 1/4	10.0
48 NW 1/4	48 NW 1/4	10.0
48 SW 1/4	48 SW 1/4	10.0
48 SE 1/4	48 SE 1/4	10.0
48 NE 1/4	48 NE 1/4	10.0
Total	Total	40.0

From	To	Area
20 SW 1/4	20 SW 1/4	10.0
20 SE 1/4	20 SE 1/4	10.0
20 NW 1/4	20 NW 1/4	10.0
20 NE 1/4	20 NE 1/4	10.0
Total	Total	40.0

1 inch equals 1000 feet



RECEIVED

MAR 17 2009

WATER RESOURCES DEPT
SALEM, OREGON

4 4 36

1 10821