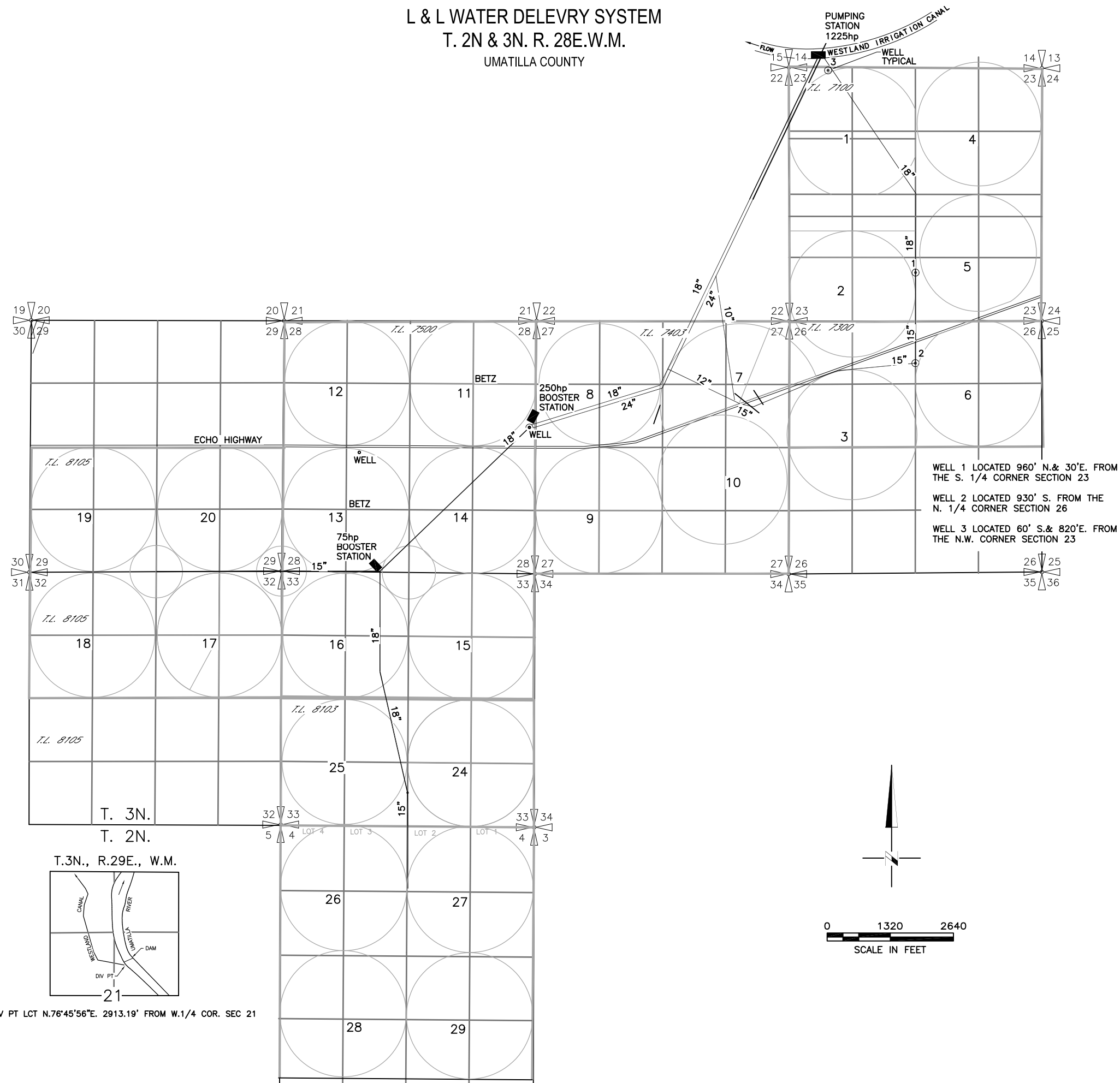
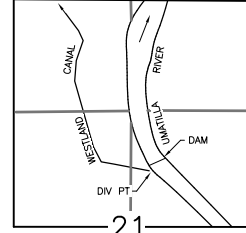


L & L WATER DELEVRY SYSTEM  
T. 2N & 3N. R. 28E.W.M.  
UMATILLA COUNTY



WELL 1 LOCATED 960' N.& 30'E. FROM THE S. 1/4 CORNER SECTION 23  
WELL 2 LOCATED 930' S. FROM THE N. 1/4 CORNER SECTION 26  
WELL 3 LOCATED 60' S.& 820'E. FROM THE N.W. CORNER SECTION 23

T.3N., R.29E., W.M.



DIV PT LCT N.76°45'56"E. 2913.19' FROM W.1/4 COR. SEC 21

