

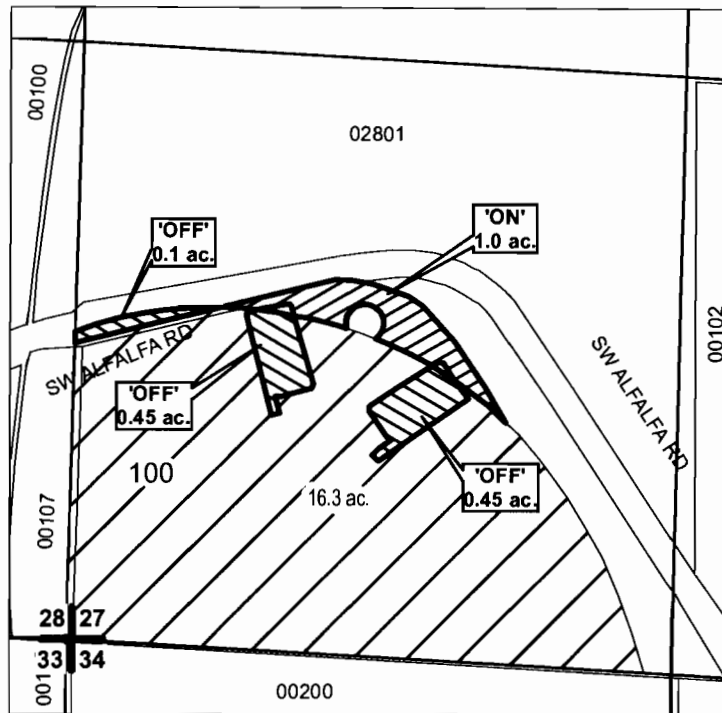
# CROOK COUNTY SEC.27 T16S R14E

SCALE - 1" = 400'



SW 1/4 OF THE SW 1/4

DISTRICT INTERNAL  
NOTICE #: T-2009-003



**RECEIVED**

MAR 30 2009

WATER RESOURCES DEPT  
SALEM, OREGON

	EXISTING WATER RIGHTS
	OFF LANDS
	ON LANDS

"OFF / ON" MAP T 10833



**APPLICATION FOR WATER RIGHTS TRANSFER**

**BRASADA RANCH, INC / BRASADA RANCH, INC**

**TAXLOT #: 100**

**1.0 ACRES**

DATE: 03-13-09

FILE: E:\TRANSFER\WRTRANS09\161427\_SW SW

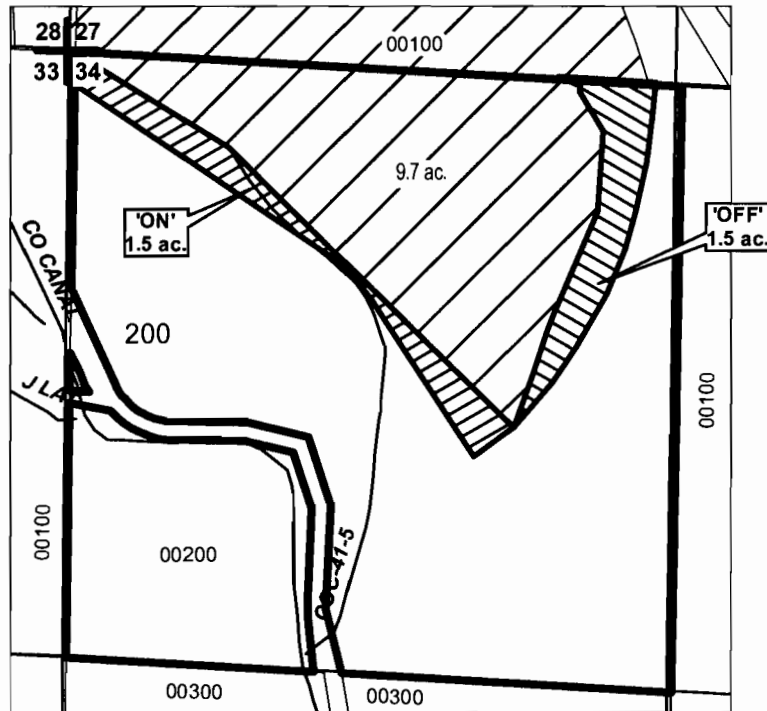
# CROOK COUNTY SEC.34 T16S R14E

SCALE - 1" = 400'



NW 1/4 OF THE NW 1/4

DISTRICT INTERNAL  
NOTICE #: T-2009-003



**RECEIVED**

MAR 30 2009

WATER RESOURCES DEPT  
SALEM, OREGON

	EXISTING WATER RIGHTS
	OFF LANDS
	ON LANDS

"OFF / ON" MAP T 10833



## APPLICATION FOR WATER RIGHTS TRANSFER

BRASADA RANCH, INC / BRASADA RANCH, INC

TAXLOT #: 200

1.5 ACRES

DATE: 03-13-09

FILE: E:\TRANSFER\WRTRANS09\161434\_NWNW