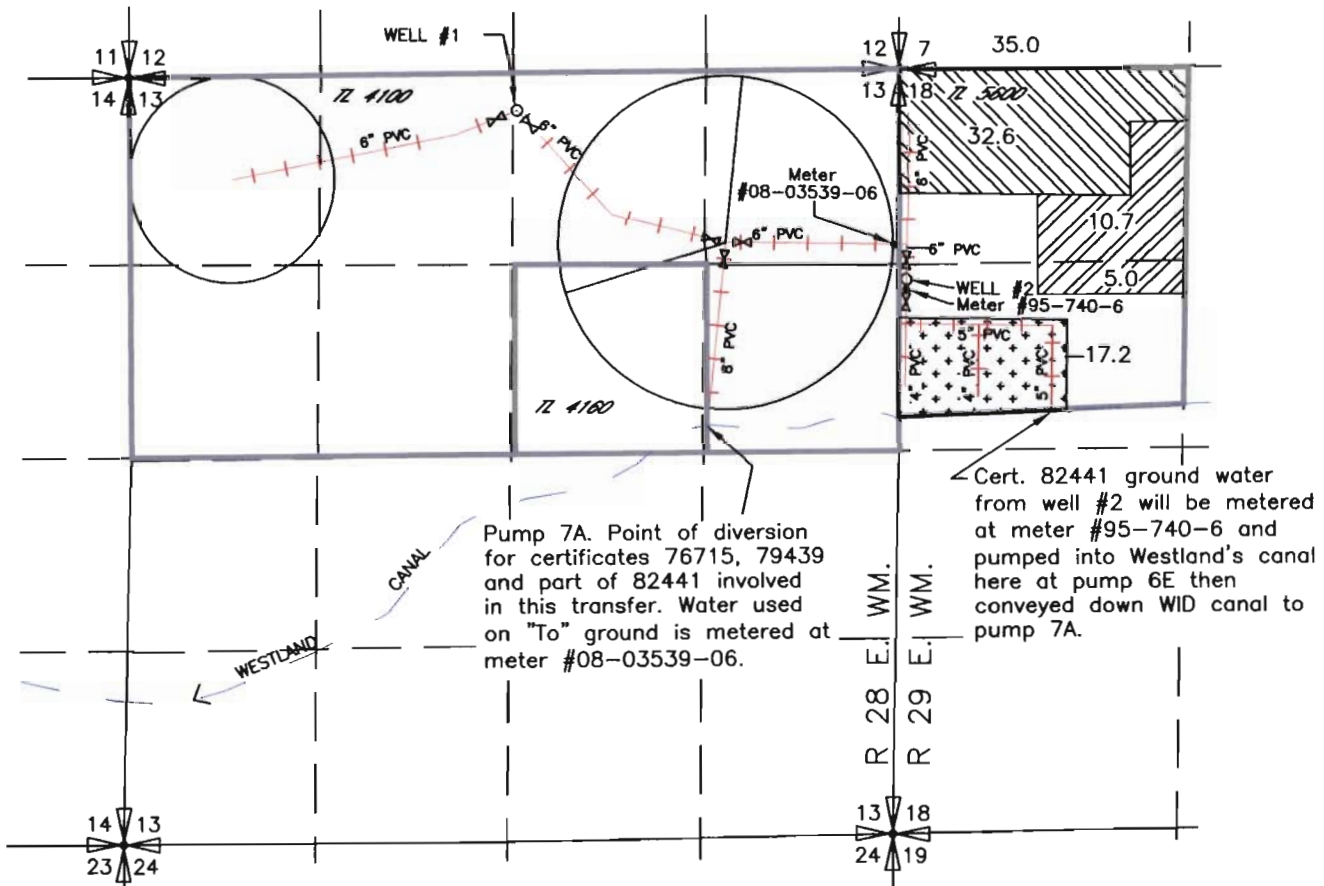


2009 WESTLAND IRRIGATION DISTRICT  
 TEMPORARY TRANSFER  
 DOUBLE M RANCH, INC - DOUBLE M RANCH INC  
 CERTIFICATES 76715, 79439 & 82441  
 T3N, R 28 & 29 E, W.M.

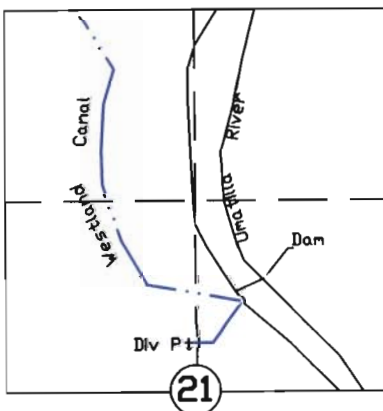
FROM



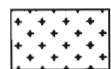



WELL #1 Located 270' South & 2540' West from the NE corner section 13, T3N, R28E, WM

T3N., R 29E., W.M.

WELL #2 Located 1450' South & 3160' West from the N 1/4 corner section 18, T3N, R29E, WM

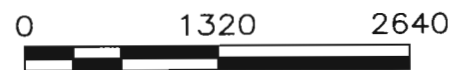


-  Primary Cert. 76715 & Supplemental Cert. 79439
-  Certificate 82441
-  Certificate 82441 not involved in this transfer
-  Control Valve

RECEIVED

MAR 26 2009

WATER RESOURCES DEPT  
 SALEM, OREGON



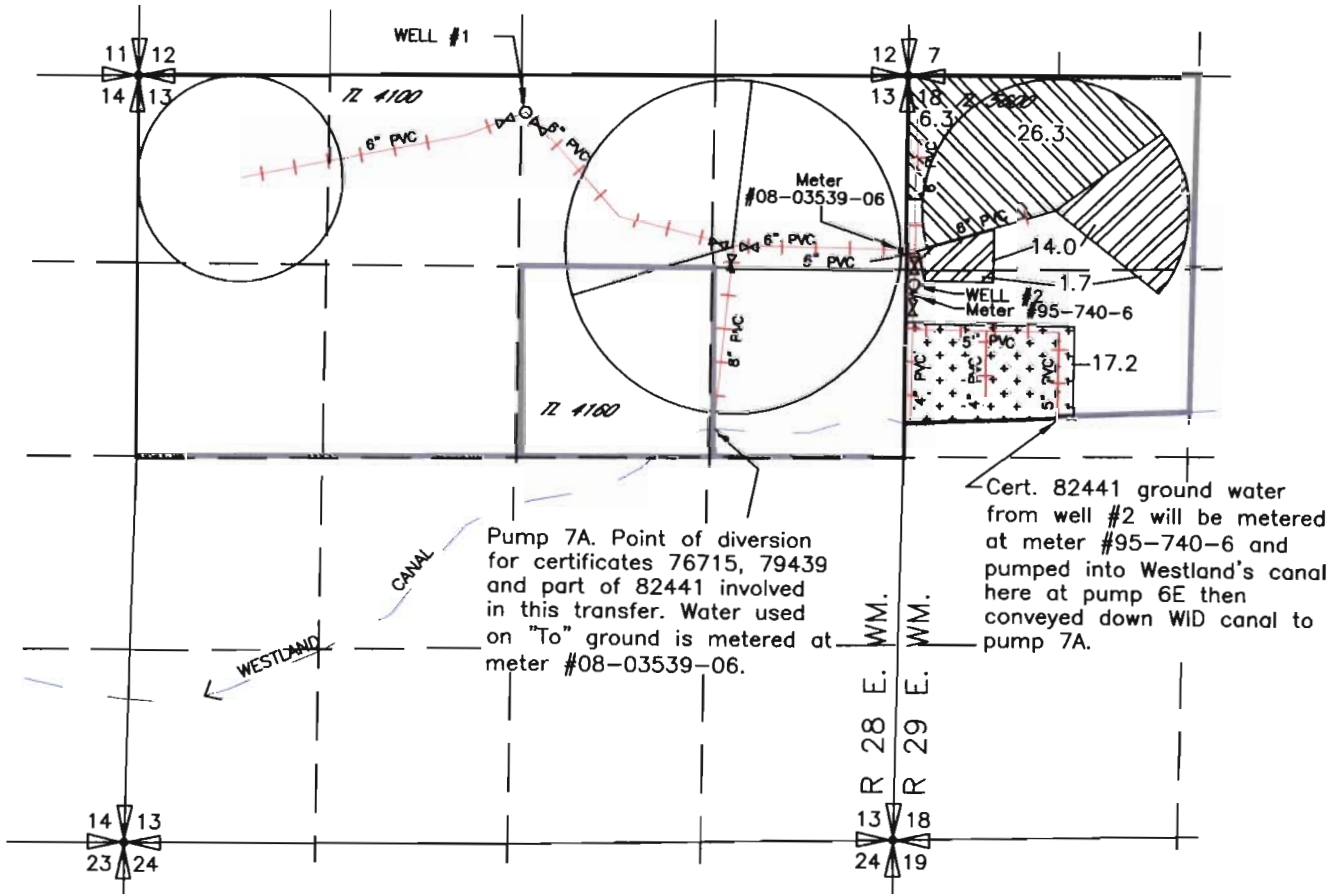
SCALE IN FEET

NOTE: THE PURPOSE OF THIS MAP IS TO IDENTIFY THE APPROXIMATE LOCATION OF THE WATER RIGHT. IT IS NOT INTENDED TO PROVIDE INFORMATION RELATIVE TO THE LOCATION OF PROPERTY OWNERSHIP BOUNDARY LINES.

T 10834

2009 WESTLAND IRRIGATION DISTRICT  
 TEMPORARY TRANSFER  
 DOUBLE M RANCH INC  
 CERTIFICATES 76715, 79439 & 82441  
 T3N, R 28 & 29 E, W.M.

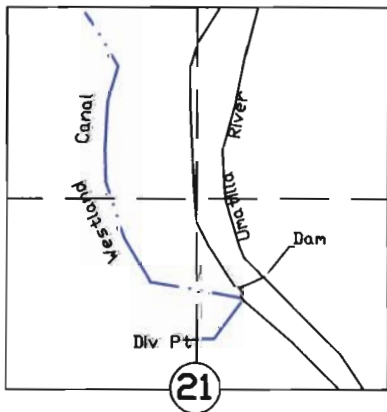
TO



Pump 7A. Point of diversion for certificates 76715, 79439 and part of 82441 involved in this transfer. Water used on "To" ground is metered at meter #08-03539-06.

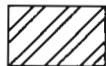
Cert. 82441 ground water from well #2 will be metered at meter #95-740-6 and pumped into Westland's canal here at pump 6E then conveyed down WID canal to pump 7A.

T3N., R 29E., W.M.



WELL #1 Located 270' South & 2540' West from the NE corner section 13, T3N, R28E, WM

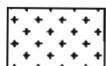
WELL #2 Located 1450' South & 3160' West from the N 1/4 corner section 18, T3N, R29E, WM



Primary Cert. 76715 & Supplemental Cert. 79439



Certificate 82441



Certificate 82441 not involved in this transfer

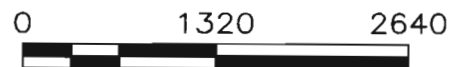


Control Valve

RECEIVED

MAR 26 2009

WATER RESOURCES DEPT  
 SALEM, OREGON



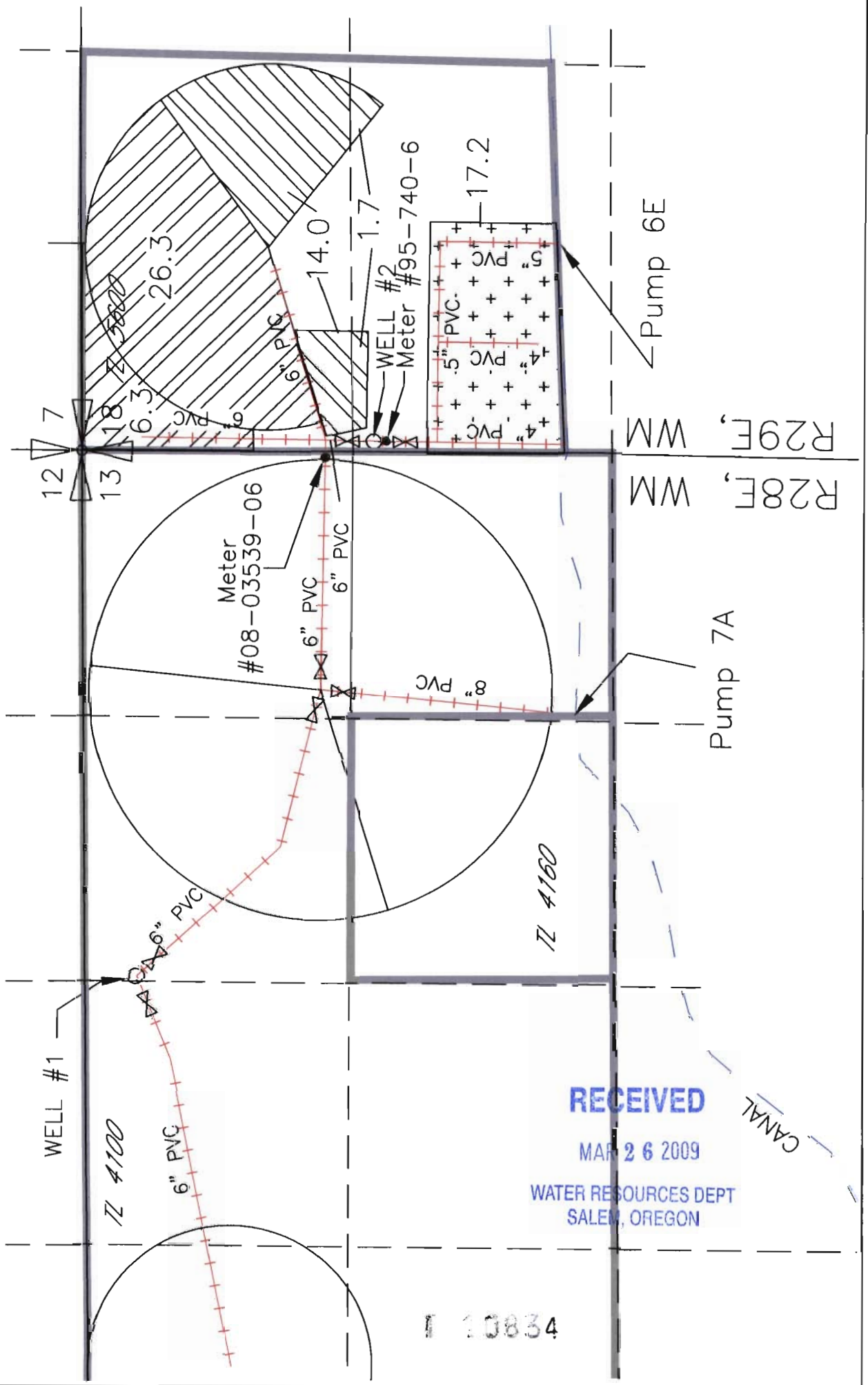
SCALE IN FEET

NOTE: THE PURPOSE OF THIS MAP IS TO IDENTIFY THE APPROXIMATE LOCATION OF THE WATER RIGHT. IT IS NOT INTENDED TO PROVIDE INFORMATION RELATIVE TO THE LOCATION OF PROPERTY OWNERSHIP BOUNDARY LINES.

1 0834

Double M Ranch, Inc.  
 Distribution System Map for 2009  
 Westland Irrigation District  
 Temporary Transfer.  
 T3N, R 28 & 29 E, W.M.

NOTE: THE PURPOSE OF THIS MAP IS TO IDENTIFY THE APPROXIMATE LOCATION OF THE WATER RIGHTS & WATER DELIVERY SYSTEM. IT IS NOT INTENDED TO PROVIDE INFORMATION RELATIVE TO THE LOCATION OF PROPERTY OWNERSHIP BOUNDARY LINES.



**RECEIVED**

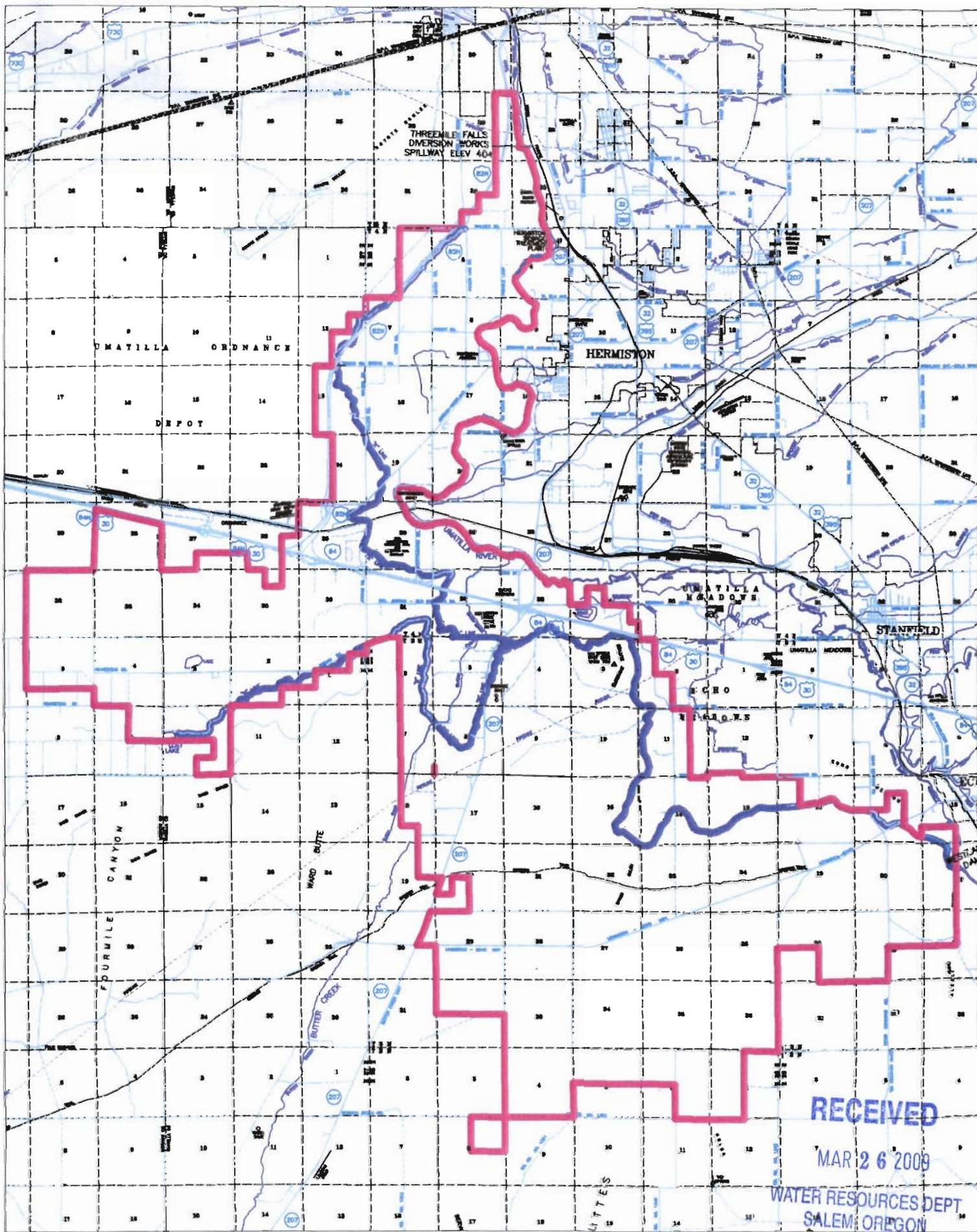
MAR 26 2009

WATER RESOURCES DEPT  
 SALEM, OREGON

1 10834



# Westland Irrigation District Boundary



T 10834