

WATER RIGHTS MAP J. A. COX RANCH 1883 ——— 1981

SECTION 1 LEGEND

= 1883 = 12 ACRES
 = 1914 = 68 ACRES
 = 1927 = 95.5 ACRES
 = EXACT POSITION OF WATER RIGHT UNKNOWN IN THIS 40 ACRE PIECE
 = 40 ACRE PIECE
 TOTAL WATER RIGHTS ACRES = 175.5
 = NO WATER RIGHTS FOUND ACRES

SECTION 12 LEGEND

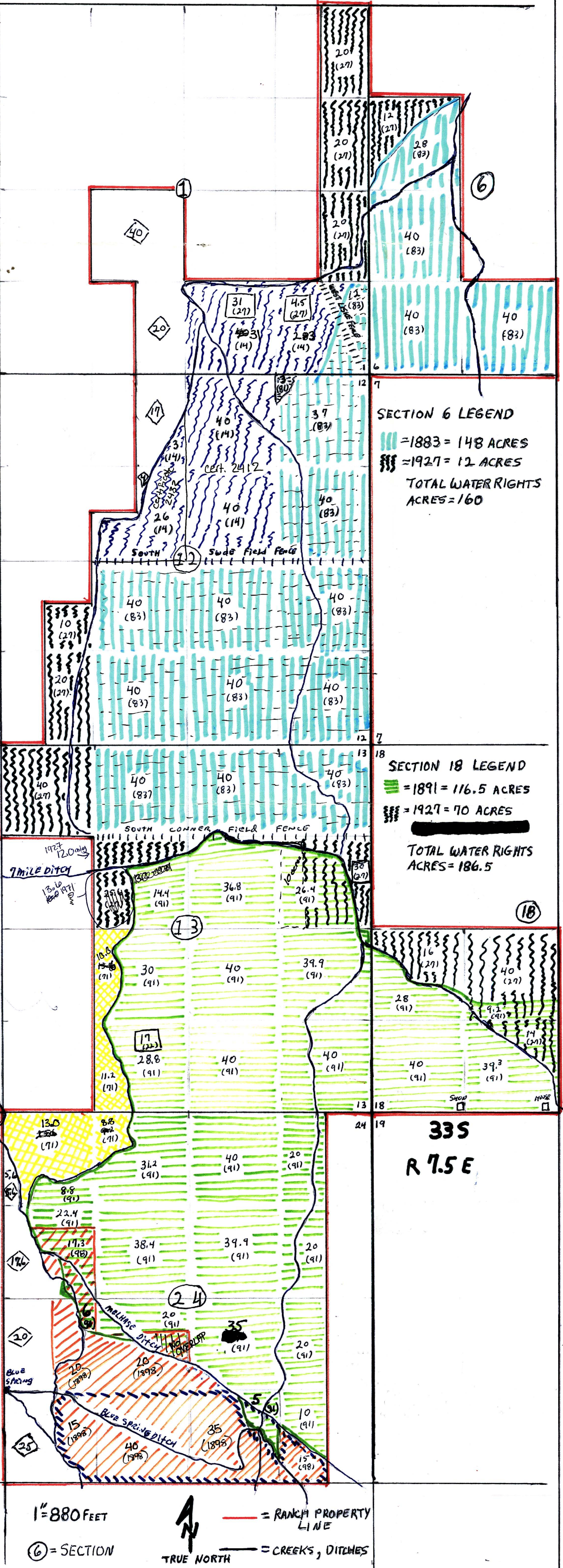
= 1883 = 317 ACRES
 = 1914 = 109 ACRES
 = 1927 = 30 ACRES
 = 1981 = 3 ACRES
 TOTAL WATER RIGHTS ACRES = 459

SECTION 13 LEGEND

= 1883 = 120 ACRES
 = 1891 = 296.3 ACRES
 = 1927 = 95.6 ACRES
 = 1971 = 2.5 ACRES
 = 1922 = 17 ACRES
 = EXACT POSITION OF WATER RIGHT UNKNOWN IN THIS 40 ACRE PIECE
 = THIS 40 ACRE PIECE
 TOTAL WATER RIGHTS ACRES = 553.9

SECTION 24 LEGEND

= 1891 = 316.7 ACRES 10900
 = 1898 = 167.3 ACRES 10900
 = 1928 = 100 ACRES 8679 (SUPPLEMENTAL RIGHTS)
 = 1971 = 56.6 ACRES
 = NO WATER RIGHTS FOUND ACRES
 TOTAL WATER RIGHTS ACRES = 610.8



SECTION 6 LEGEND

= 1883 = 148 ACRES
 = 1927 = 12 ACRES
 TOTAL WATER RIGHTS ACRES = 160

SECTION 18 LEGEND

= 1891 = 116.5 ACRES
 = 1927 = 70 ACRES
 TOTAL WATER RIGHTS ACRES = 186.5

1" = 880 FEET
 = SECTION
 = RANCH PROPERTY LINE
 = CREEKS, DITCHES
 TRUE NORTH

RANCH SUMMARY

TOTAL ACRES IN RANCH: 2085 TOTAL WATER RIGHTS ACRES: 2153
 TOTAL ACRES WITH NO WATER RIGHTS: 150 ACRES OVERLAPPED RIGHTS: 218
 TOTAL ACRES BY PRIORITY DATE:
 1883 = 597 1891 = 729.5 1898 = 167.3 1914 = 177 1922 = 17 1927 = 303.1 1928 = 100 1971 = 59.8
 1981 = 3