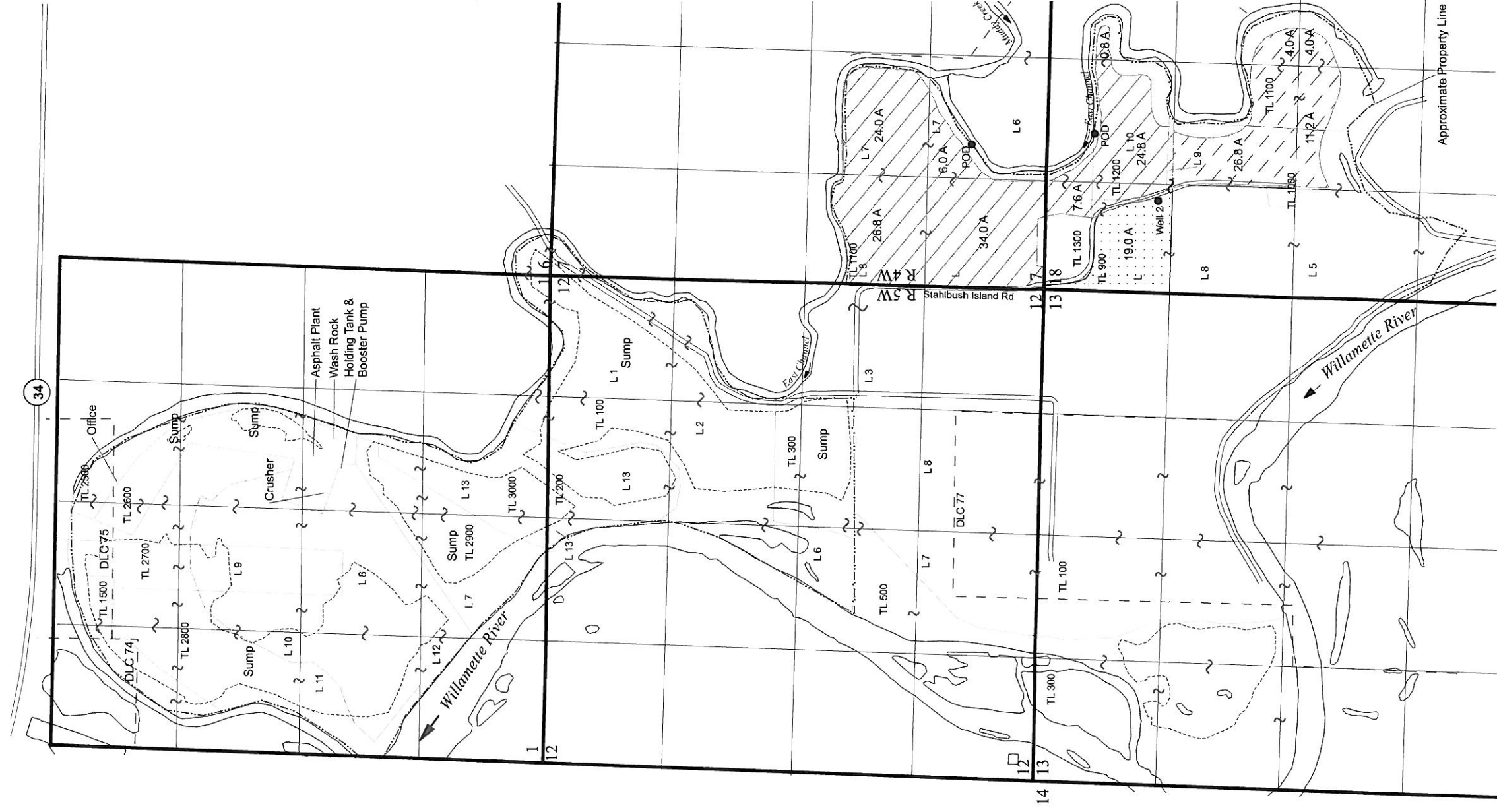

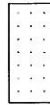


T12S, R4W & 5W, Sections 1, 6, 7, 12, & 18, WM  
 Linn County, Oregon  
 From Map



GR-2177 Well 2 located 1,190 ft S and 990 ft E from NW corner of Section 18  
 Certificate 28783 POD located in Lot 7 (SE SW) of Section 7 (No Specific Coordinates)  
 Certificate 28783 POD located in Lot 10 (NE NW) of Section 18 (No Specific Coordinates)

**From Lands**

-  Certificate 28783 (124.0 Acres)
-  GR-2177 (19.0 Acres)

THIS MAP IS NOT INTENDED TO  
 PROVIDE LEGAL DIMENSIONS OR  
 LOCATIONS OF PROPERTY  
 OWNERSHIP LINES.

April 1, 2009



**Remaining Rights**

-  Certificate 28783 (46.1 Acres)

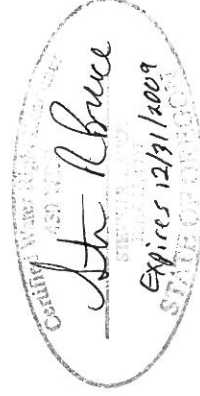


FIGURE 1

KNIFE RIVER  
 Corvallis, Oregon



1 inch = 1,320 feet

