

DESIGNED BY:	NMB	CHECKED BY:	TAM
DRAWN BY:	NMB	APPROVED BY:	TAM
LAST EDIT:	3/27/2009	PLOT DATE:	4/1/2009
DATE:	BY:	REV:	REVISION

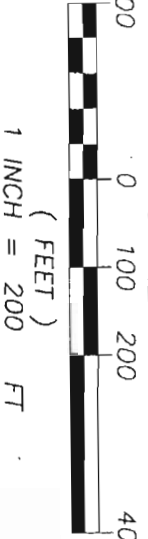
RECEIVED  
 APR 03 2009  
 WATER RESOURCES DEPT  
 SALEM, OREGON  
 SCALE: 1" = 200'  
 PROJECT NO: 35626  
 DRAWING FILE NAME: 35626-land-Riv-Bend  
 SHEET: WR TR 1.0  
 BEND METRO PARK AND RECREATION DISTRICT  
 RIVERBEND PARK  
 WATER RIGHTS TEMPORARY  
 TRANSFER  
 ON MAP

**LEGEND**

PROPOSED PLACE OF USE FOR IRRIGATION RIGHTS ("TO LANDS")

WATER PER TAXLOT:  
 TL 181205C 801 8.31 AC  
 TL 181205C 700 0.43 AC  
 TL 181205C 800 0.50 AC

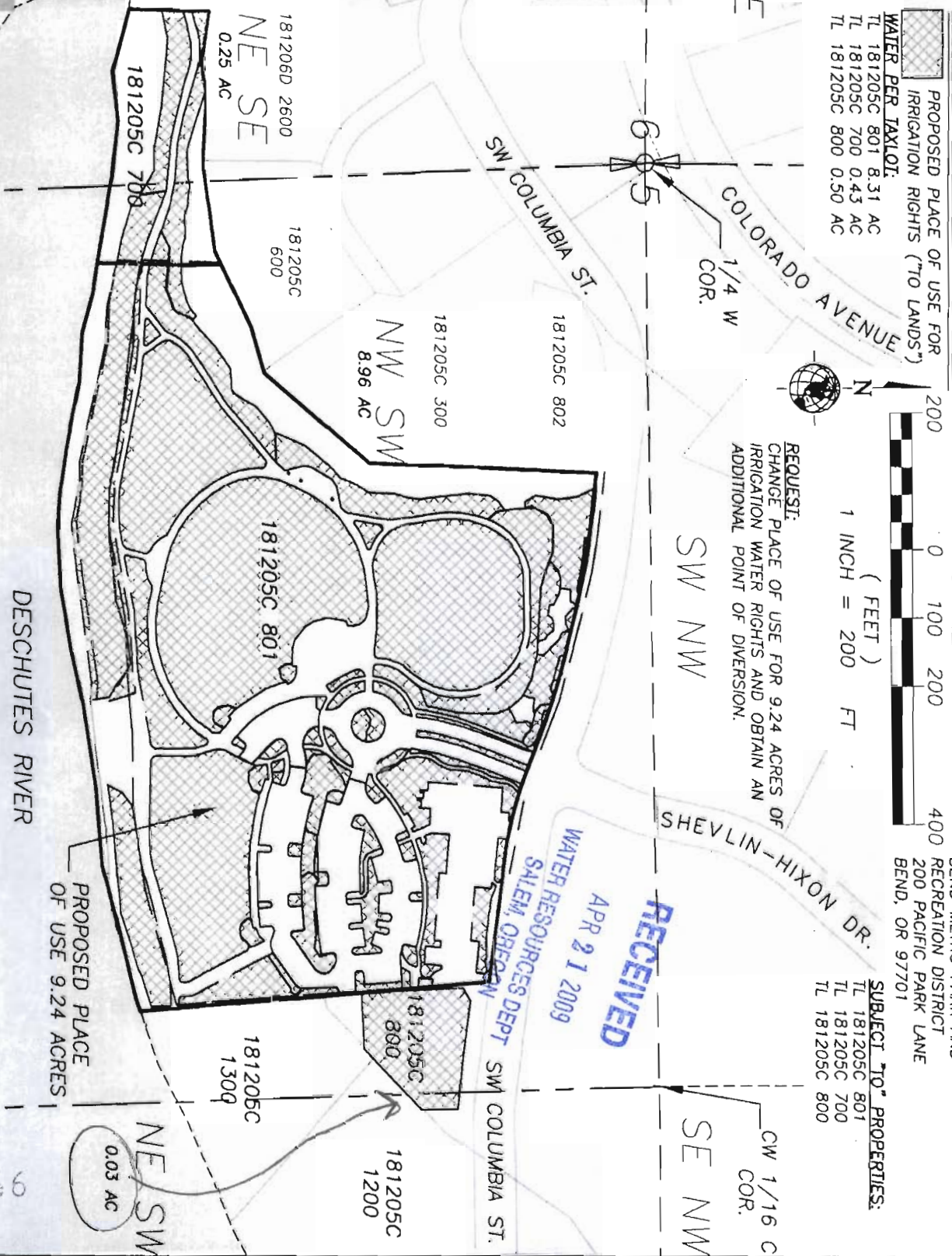
**SCALE**



REQUEST:  
 CHANGE PLACE OF USE FOR 9.24 ACRES OF IRRIGATION WATER RIGHTS AND OBTAIN AN ADDITIONAL POINT OF DIVERSION.

APPLICANT:  
 BEND METRO PARK AND RECREATION DISTRICT  
 200 PACIFIC PARK LANE  
 BEND, OR 97701

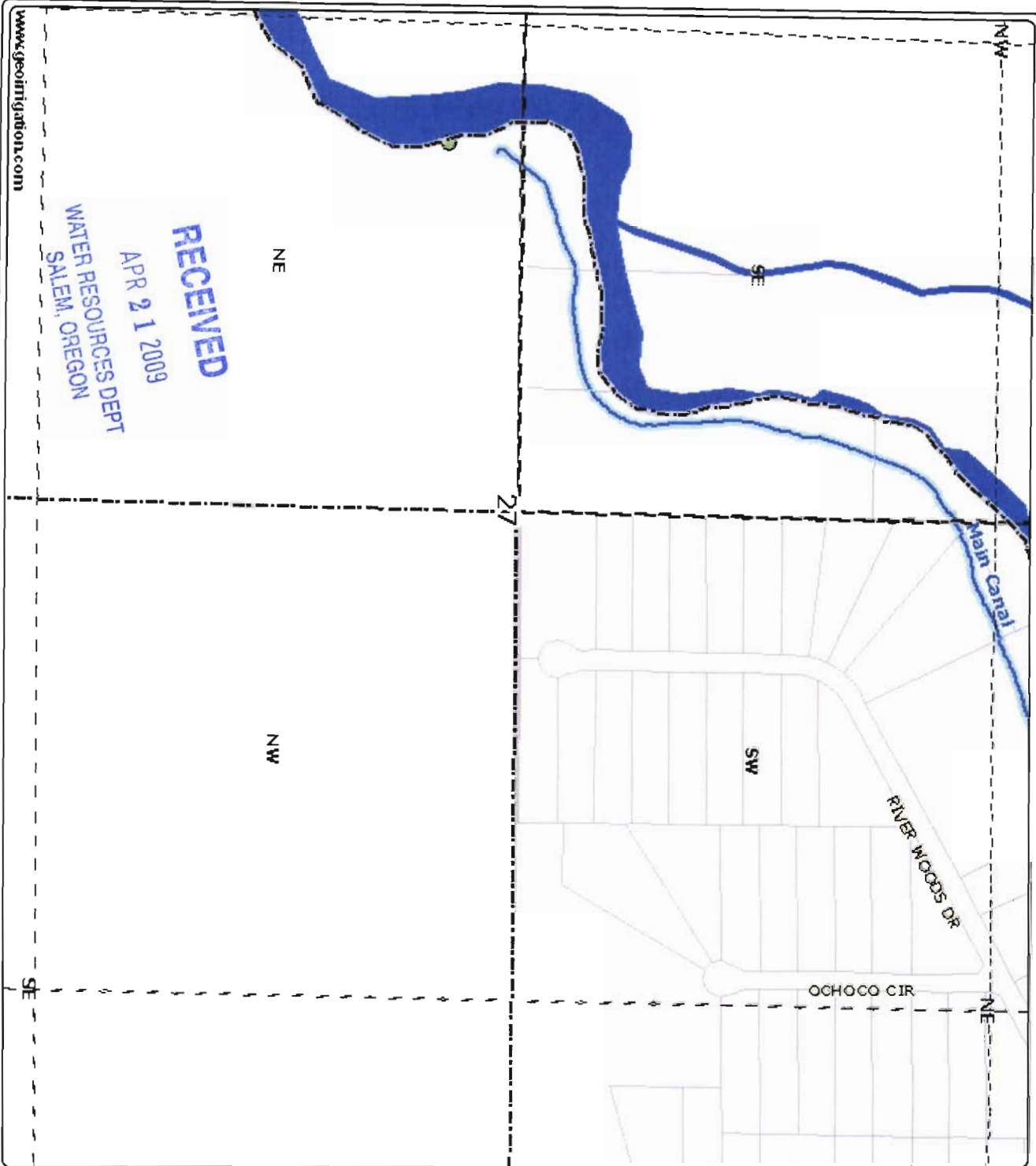
SUBJECT "TO" PROPERTIES:  
 TL 181205C 801  
 TL 181205C 700  
 TL 181205C 800



NOTE: THIS MAP WAS PREPARED FOR THE PURPOSE OF IDENTIFYING THE LOCATION OF WATER RIGHTS. THIS MAP IS NOT INTENDED TO PROVIDE DIMENSIONS OR THE LOCATION OF PROPERTY OWNERSHIP LINES.

RECEIVED  
 APR 21 2009  
 WATER RESOURCES DEPT  
 SALEM, OREGON

# Arnold Irrigation District



**RECEIVED**  
 APR 21 2009  
 WATER RESOURCES DEPT  
 SALEM, OREGON

www.geoinformation.com

DISCLAIMER: This map is intended for display purposes only and is not intended for any legal representations. There are no warranties, expressed or implied, that accompany this product.

## Bend Metro Parks & Rec Temporary Transfer

POD for 7.10 acres - 18S 11E 27  
 NESW (2800 feet South and  
 3740 feet West from the NE  
 corner of Section 27)

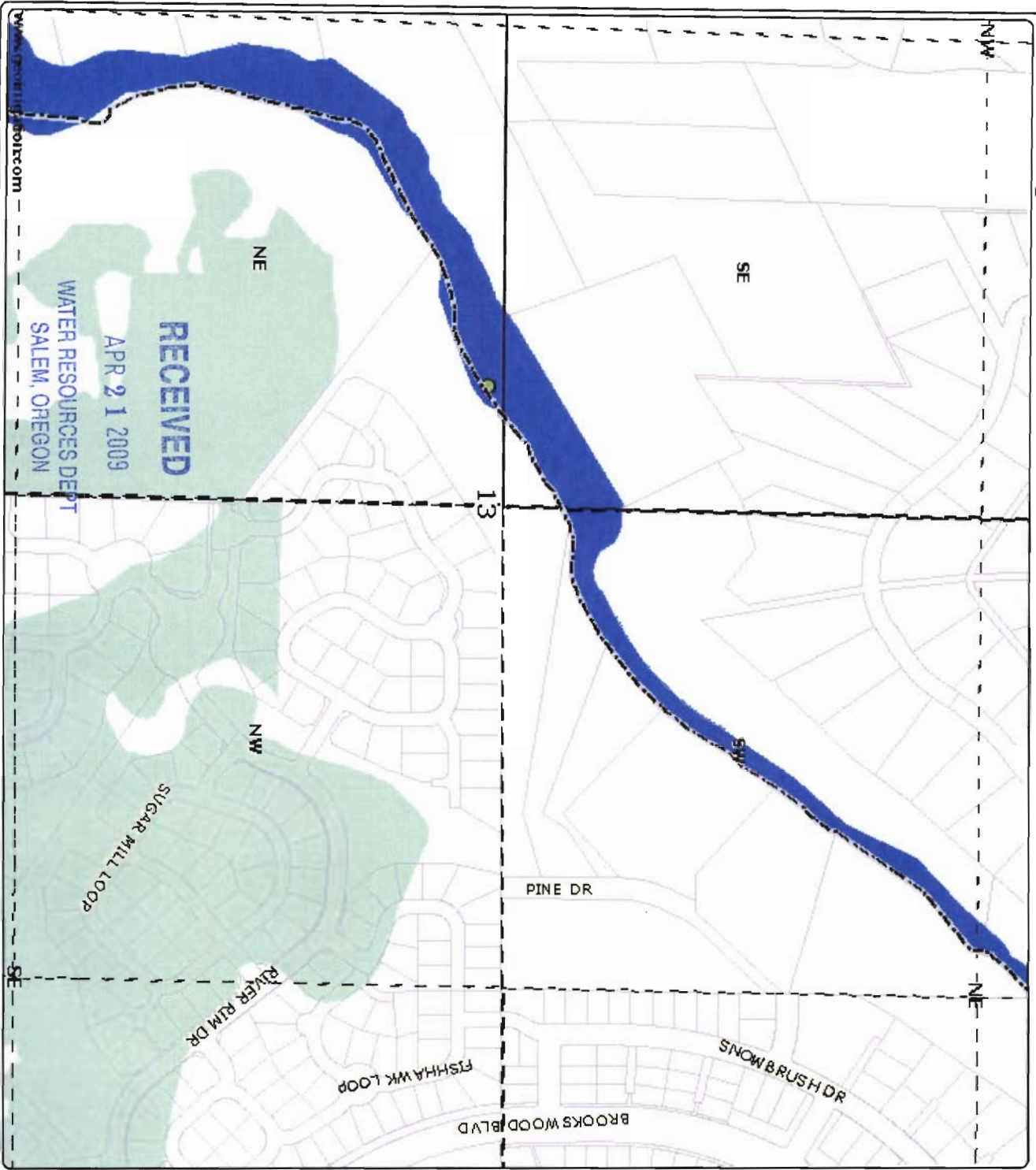
- District Boundary
- County Boundary
- Road Labels
- Township Range
- Sections
- Section Labels
- Quarters
- Quarter Labels
- Quarter Quarters
- Quarter Quarter Labels
- Taxlots
- Canal All
- Canal Piped
- Canal Open
- PODs
- POU District Primary Fill
- Rivers



Scale 1" = 400'  
 Created: 4/20/2009

10856

# Arnold Irrigation District



**Bend Metro Parks & Rec  
Temporary Transfer**  
 POD for 2.14 acres - 18S 11E 13  
 NESW (2710 feet South and  
 2830 feet West from the NE  
 corner of Section 13)

- District Boundary
- County Boundary
- Road labels
- Township Range
- Sections
- Section Labels
- Quarters
- Quarter Labels
- Quarter Quarters
- Quarter Quarter Labels
- Taxlots
- Canal All
- Canal Piped
- Canal Open
- PODs
- POU District Primary Fill
- Rivers



Scale 1" = 400'  
 Created: 4/20/2009

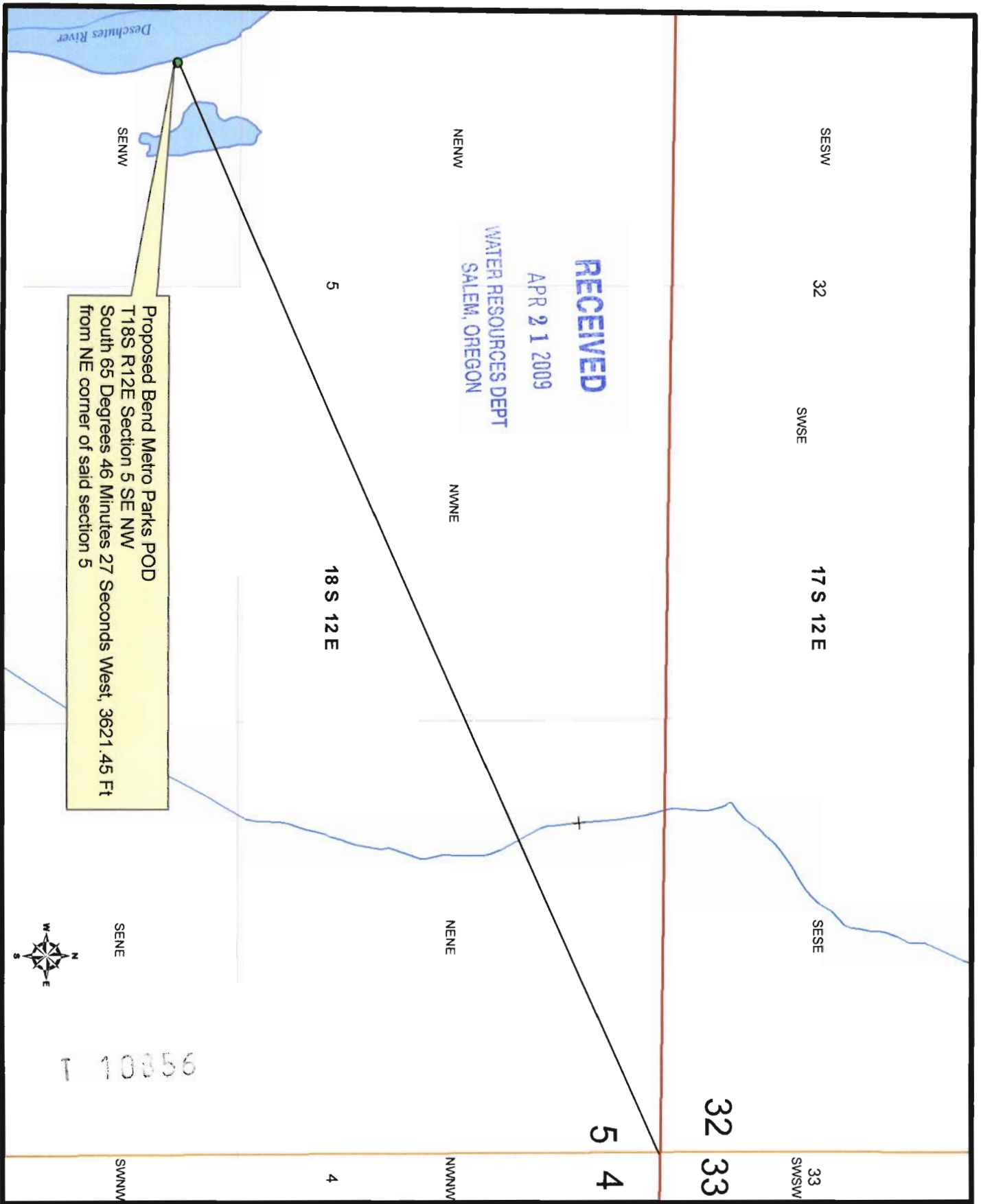
93806 1

DISCLAIMER: This map is intended for display purposes only and is not intended for any legal representations. There are no warranties, expressed or implied, that accompany this product.

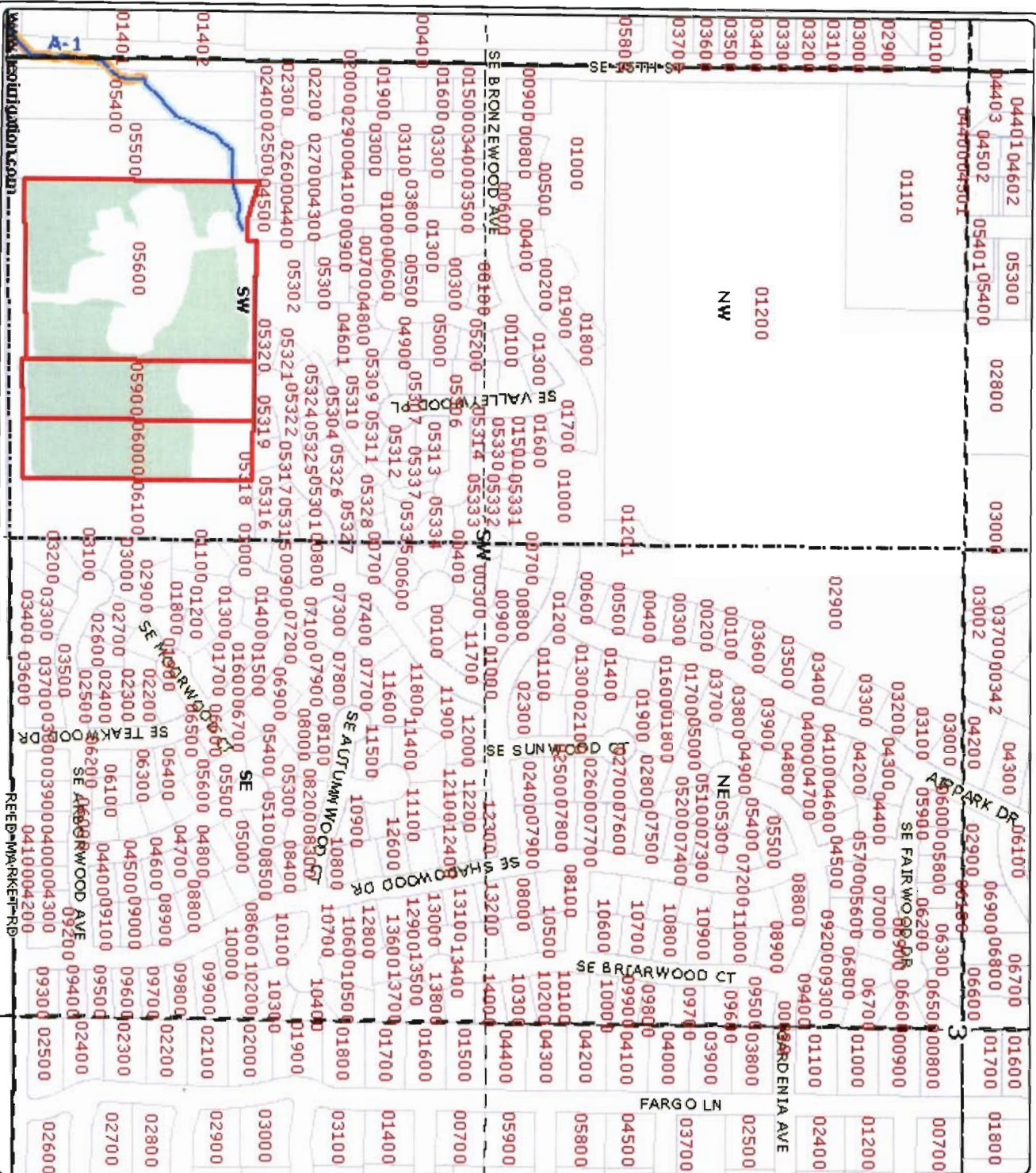
www.arnoldirrigation.com



# Bend Metro Parks and Recreation District Transfer



# Arnold Irrigation District



OFF MAP - BMP&R -  
181203CC05600, 5900,  
6000

181203-SWSW-05600 - 4.13 ac;  
5900 - 1.62 ac; 6000 - 1.35 ac -  
No remaining water in the  
SWSW

RECEIVED

APR 21 2009

WATER RESOURCES DEPT  
SALEM, OREGON

- District Boundary
- County Boundary
- Road Labels
- Township Range
- Sections
- Section Labels
- Quarters
- Quarter Labels
- Quarter Quarters
- Quarter Quarter Labels
- Lot Labels
- Taxlots
- Canal All
- Canal Piped
- Canal Open
- POU District Primary Fill
- Rivers



Scale 1" = 400'  
Created: 4/20/2009

10856

DISCLAIMER: This map is intended for display purposes only and is not intended for any legal representations. There are no warranties, expressed or implied, that accompany this product.



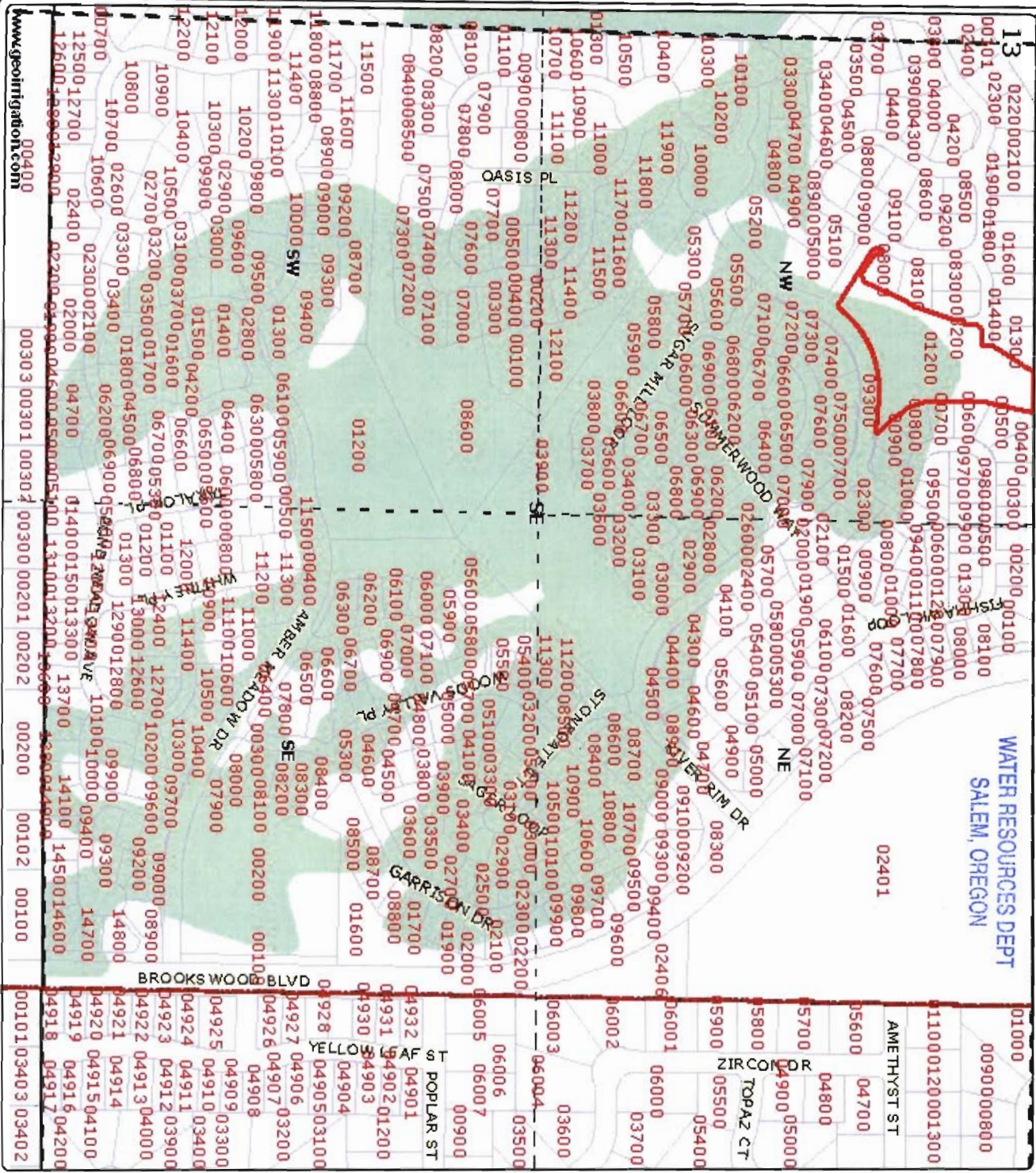
RECEIVED

APR 21 2009

# Arnold Irrigation District

WATER RESOURCES DEPT  
SALEM, OREGON

OFF MAP - BMP&R -  
181113DB01200 - NWSE -  
2.14 ac  
5.28 ac - in use by RiverRim  
Community Association; 15.34  
ac leased Instream (JL Ward)



- District Boundary
- County Boundary
- Road Labels
- Township Range
- Sections
- Section Labels
- Quarters
- Quarter Labels
- Quarter Quarter Labels
- Lot Labels
- Taxlots
- Canal All
- Canal Piped
- Canal Open
- POU District Primary Fill
- Rivers



Scale 1" = 400'  
Created: 4/20/2009

10886

DISCLAIMER: This map is intended for display purposes only and is not intended for any legal representations. There are no warranties, expressed or implied, that accompany this product.

www.geointegration.com