

This is where  
the water will be  
transfer to.

RECEIVED

MAY 04 2009

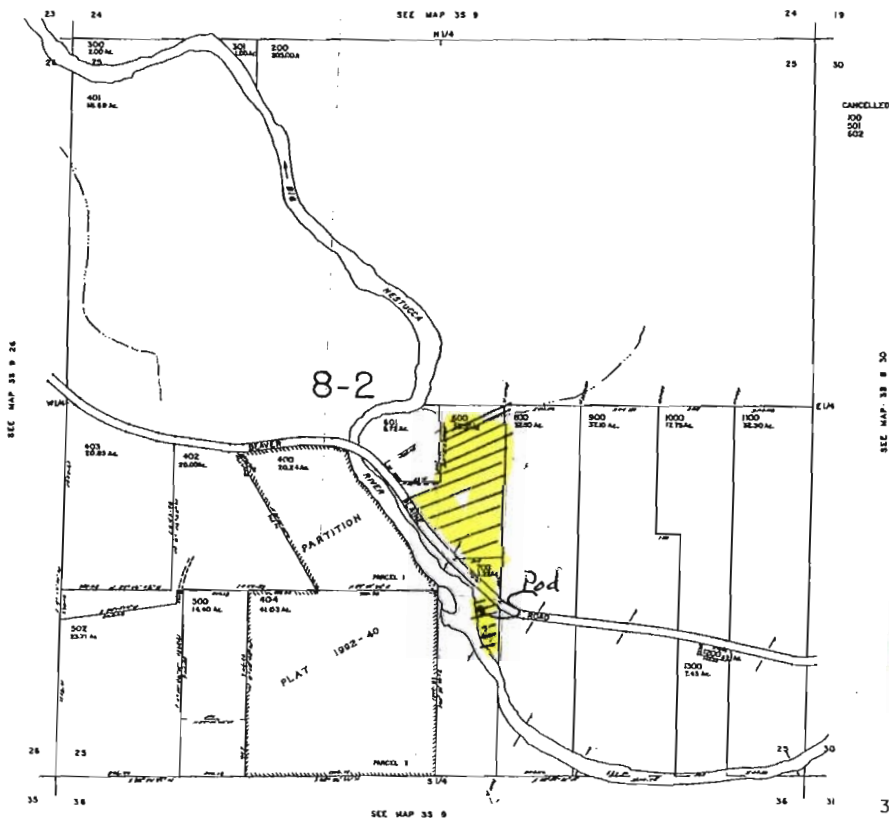
WATER RESOURCES DEPT  
SALEM, OREGON

1" = 1320 feet

3S 9 25

THIS MAP WAS PREPARED FOR  
ASSESSMENT PURPOSE ONLY

SECTION 25 T.3S. R.9W. W.M.  
TILLAMOOK COUNTY



CANCELLED  
200  
201  
202

SEE MAP 38 8 2

RECEIVED

APR 24 2009

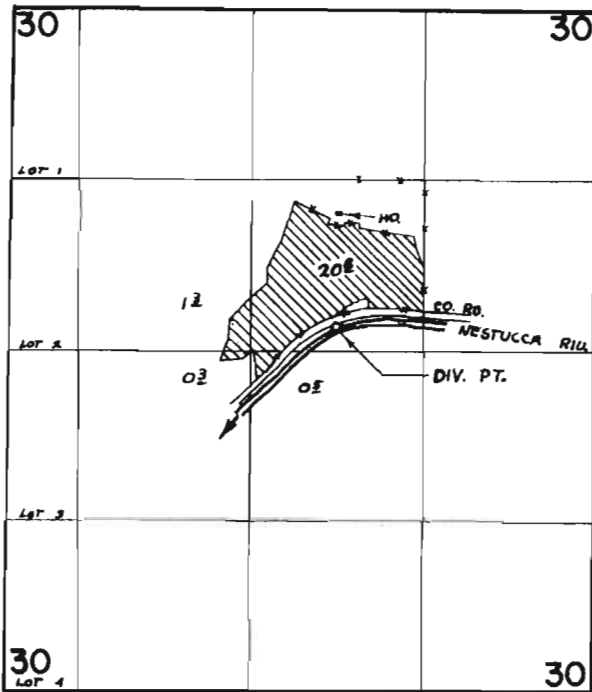
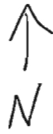
WATER RESOURCES DEPT  
SALEM, OREGON

3S 9 25

REVISED 2-25-91. BPH

T 10867

T. 3 S. R. 8 W. W. M.



DIV. PT. LOC. 1130' S. & 670' W FROM NE COR. SW1/4 NE1/4

**FINAL PROOF SURVEY**  
UNDER

Application No. 37463... Permit No. 27891...  
IN NAME OF

..... ERNEST G. HARRIS .....

Surveyed AUG. 12, 1971, by R. MUCKEN.....

**RECEIVED**

MAY 04 2009

WATER RESOURCES DEPT  
SALEM, OREGON

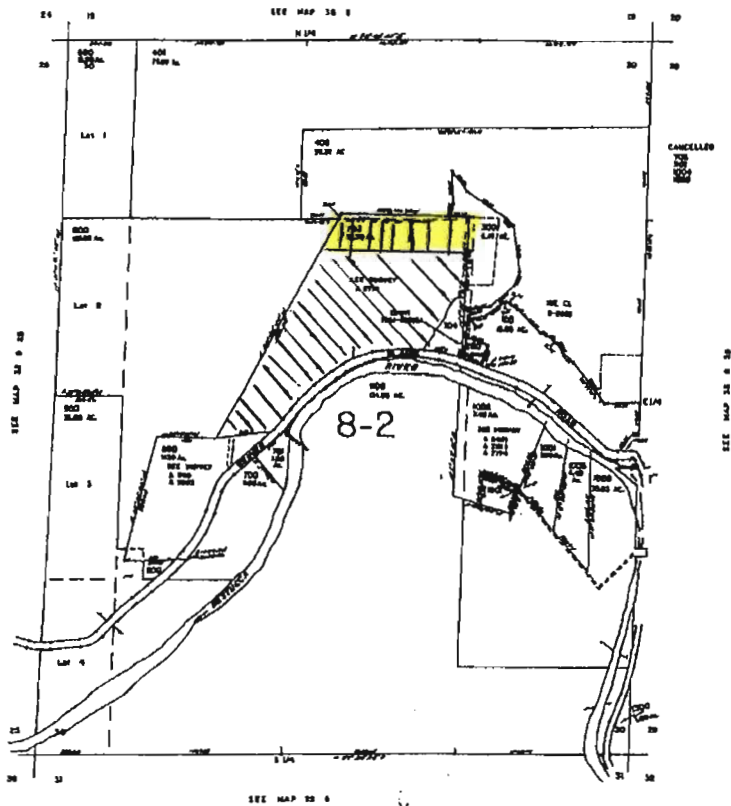
1 10867

The yellow shaded area is the closest representation of the 7 supplemental irrigation acres to remain on existing property.

1" = 1320 feet

THIS MAP WAS PREPARED FOR ASSESSMENT PURPOSE ONLY

SECTION 30 T.3S. R.8W. W.M.  
TILLAMOOK COUNTY



T 10867

RECEIVED

MAY 04 2009

WATER RESOURCES DEPT  
SALEM, OREGON

35 8 30

↑  
2  
—

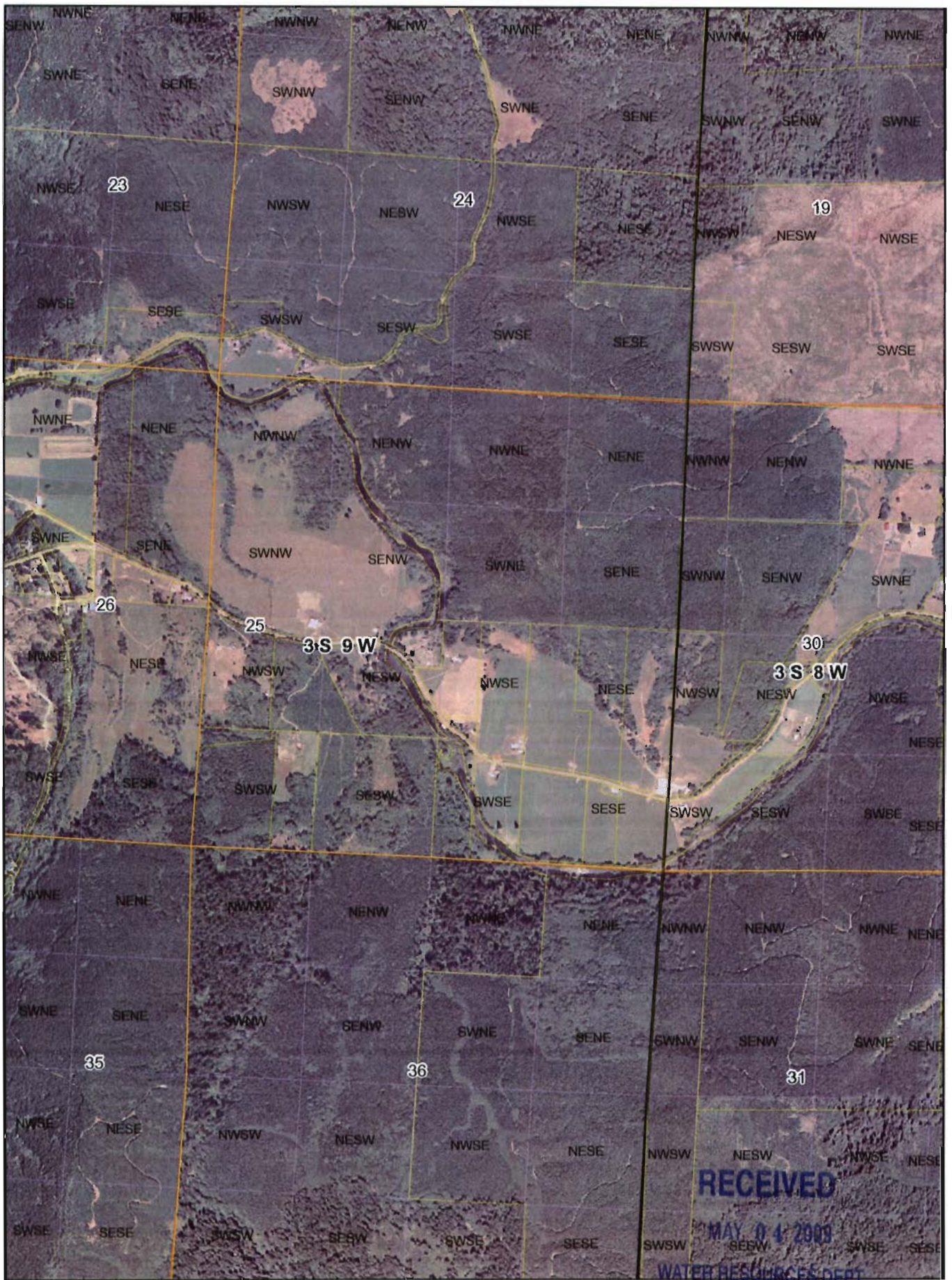
RECEIVED

APR 24 2009

WATER RESOURCES DEPT  
SALEM, OREGON

35 8 30

REVISED 05/07/06, 05



T 10867

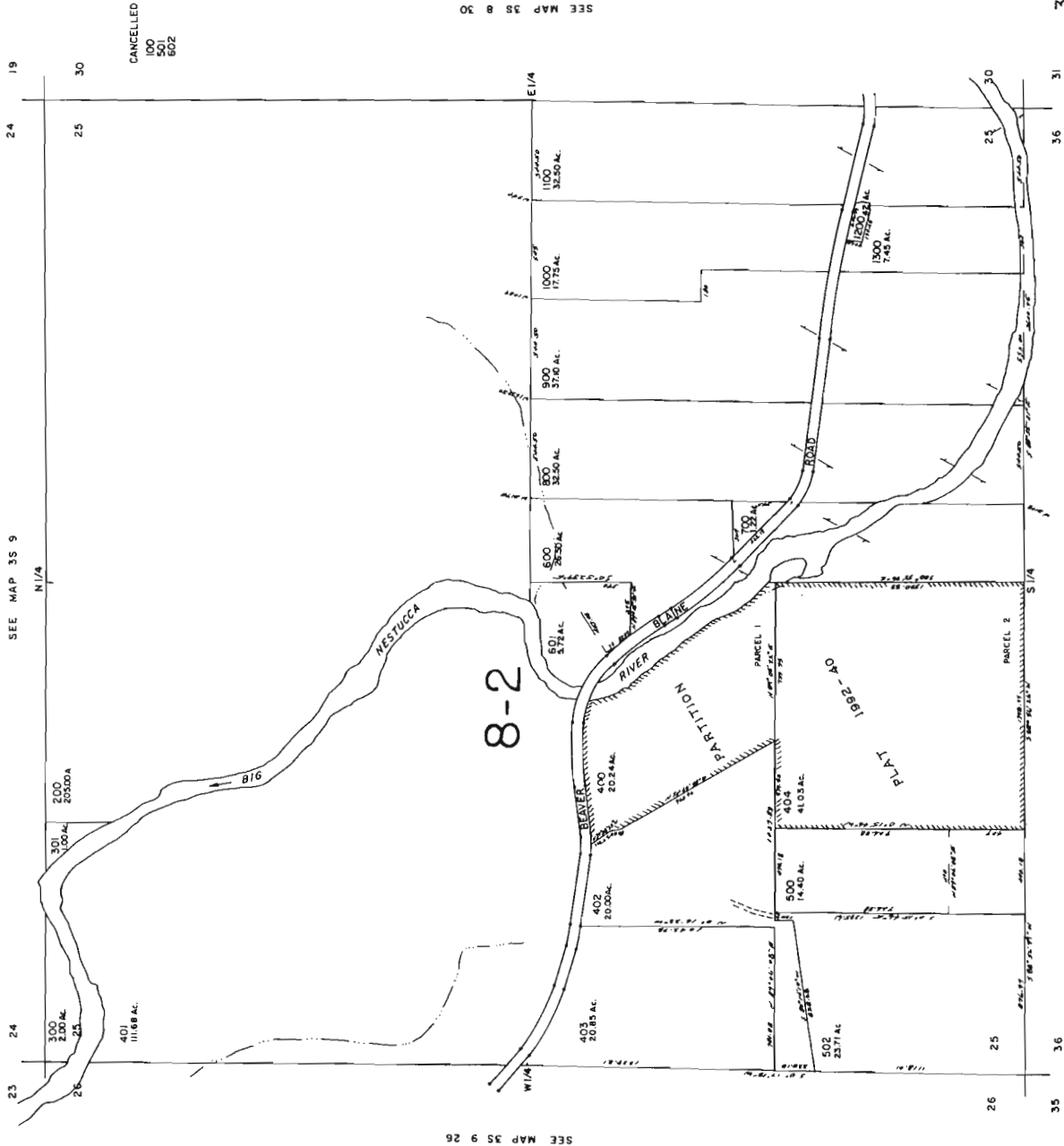
RECEIVED  
MAY 04 2009  
WATER RESOURCES DEPT  
SALEM, OREGON

3S 9 25

SECTION 25 T.3S. R.9W. W.M.  
TILLAMOOK COUNTY

1" = 400'

THIS MAP WAS PREPARED FOR  
ASSESSMENT PURPOSE ONLY



CANCELLED  
100  
501  
502

SEE MAP 3S 8 30

SEE MAP 3S 9 26

3S 9 25

REVISED 2-25-99, BPH

SEE MAP 3S 9

35 36

RECEIVED

MAY 04 2009

WATER RESOURCES DEPT  
SALEM, OREGON

T 10867