

AND TAXATION ONLY

SECTION 1, T.17S. R.4 W.W. M. LANE COUNTY

SCALE 1" = 400' 600'

DATE	
11/15/03	MAP
11/15/03	L.C.
11/15/03	D.L.C.
11/15/03	PLAT

GR1209

Becker 8²Ac + L 8500

Map for Assignment and GR Mod. SEE MAP 16 04 36

069-09

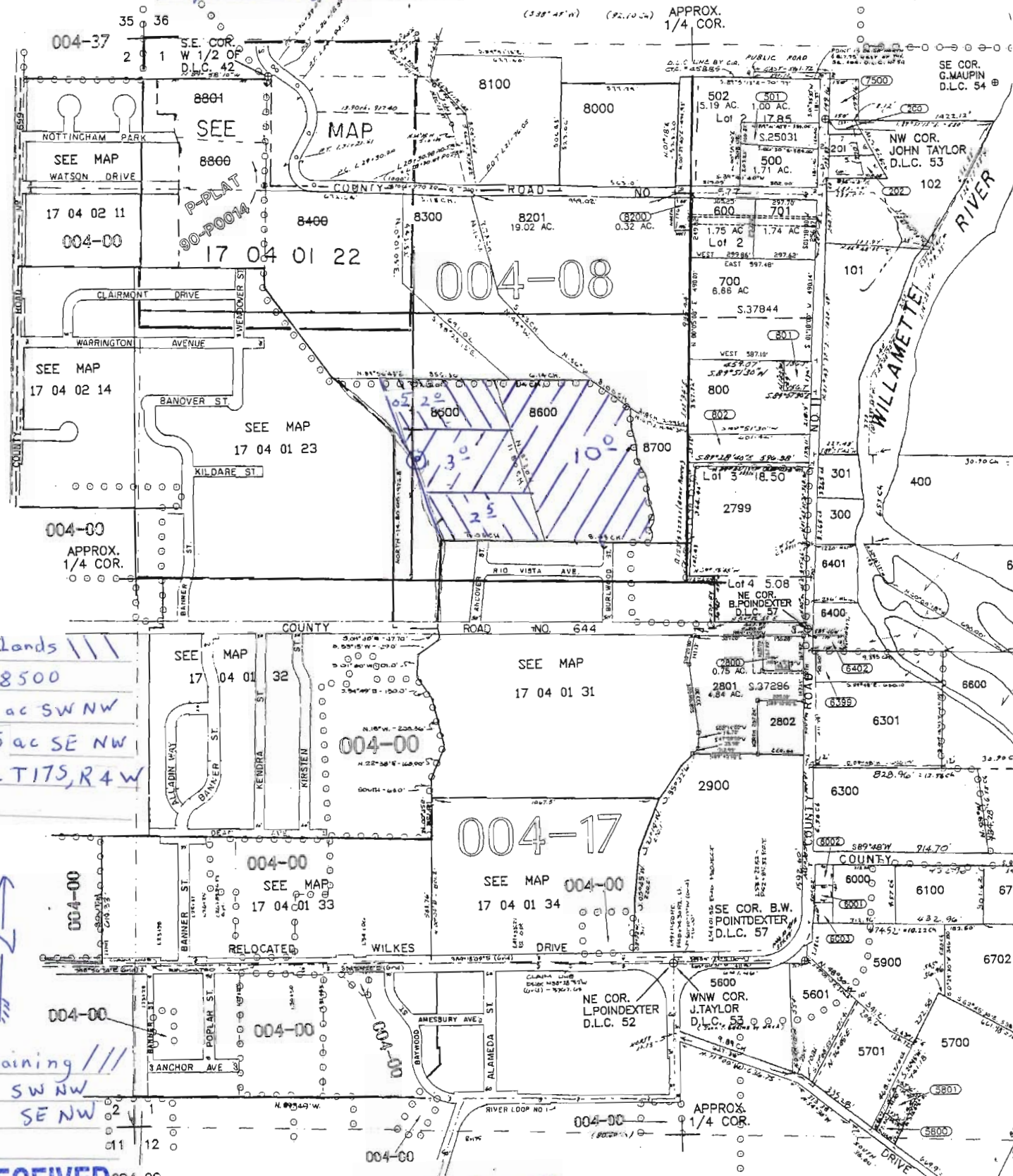
L 8801
1' 58" 10.2
1' 24" 19.2
1' 24" 19.2

SEE MAP 17 04 02

SEE MAP 17 04 02

Remaining ///
0.1 SW NW
13.0 SE NW

Offlands ///
TL 8500
0.5 ac SW NW
4.5 ac SE NW
Sec 1 T17S, R4W



RECEIVED

MAY 15 2009

WATER RESOURCES DEPT
SALEM, OREGON

10881

© POA for offlands - No Well Log
Well used since about 1960
445' N and 1250' E of W 1/4 cor sec 1 T17S, R4W

SEE MAP 17 04 12

FOR ASSESSMENT AND TAXATION ONLY

N W S.E. 1/4 SEC. 35 T.16S. R.4W. W.M.
Lane County
1" = 200' 300'

RECEIVED

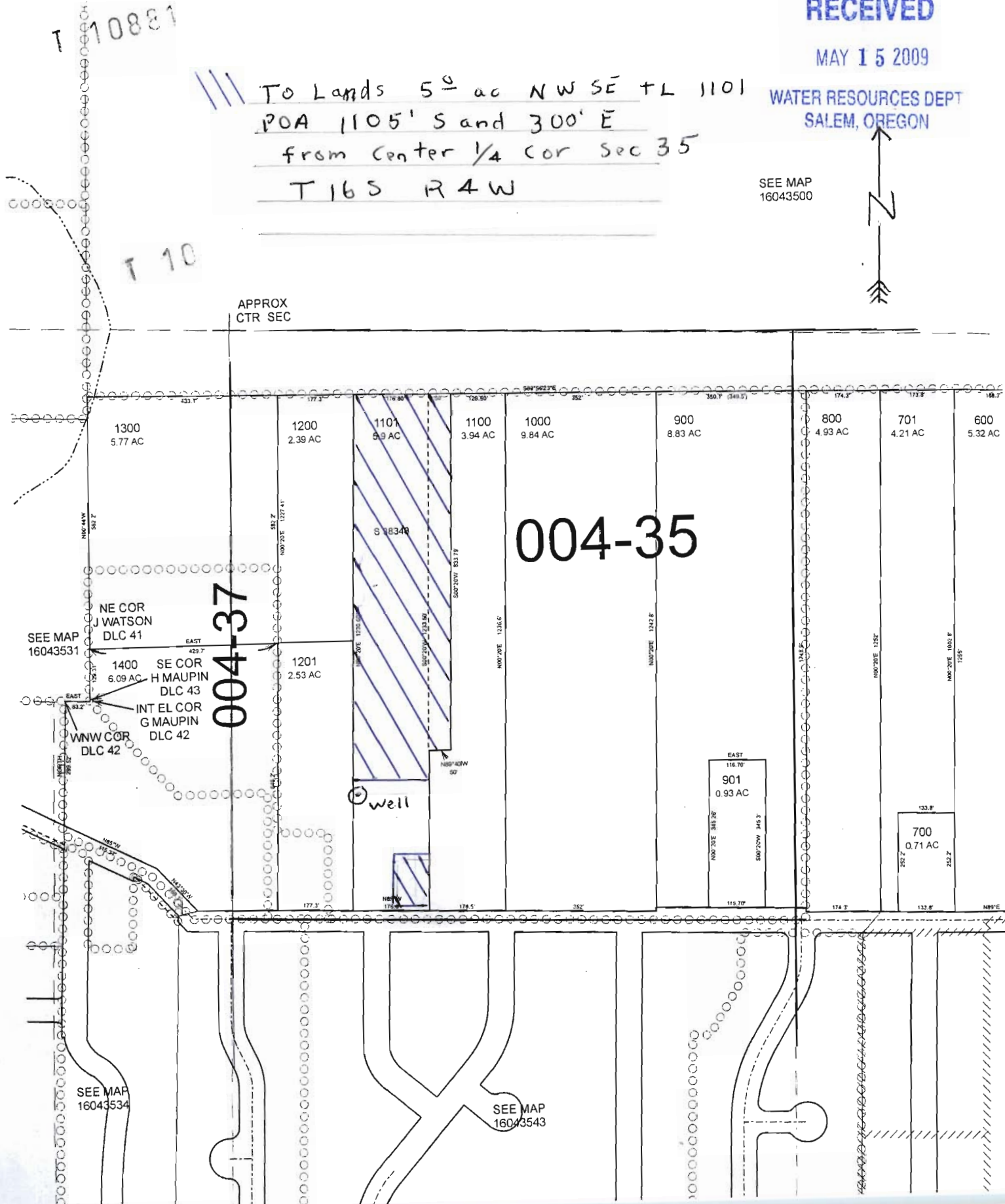
MAY 15 2009

WATER RESOURCES DEPT
SALEM, OREGON

SEE MAP
16043500



/// To Lands 5[±] ac NW SE + L 1101
POA 1105' S and 300' E
from Center 1/4 Cor Sec 35
T 16 S R 4 W



T 10881

T 10

APPROX
CTR SEC

004-35

004-37

SEE MAP
16043531

NE COR
J WATSON
DLC 41

SE COR
H MAUPIN
DLC 43

INT EL COR
G MAUPIN
DLC 42

WNW COR
DLC 42

Well

SEE MAP
16043534

SEE MAP
16043543

* 2545
4H-80

T 1088

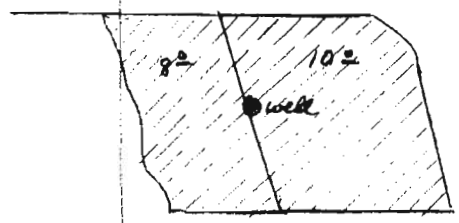
T 175, R 4W

35 36

31

2 1

1



GR-1209

RECEIVED

MAY 15 2009

WATER RESOURCES DEPT
SALEM, OREGON

REGISTERED
MAR 13 1958
STATE ENGINEER
GRAND...

2 1

1

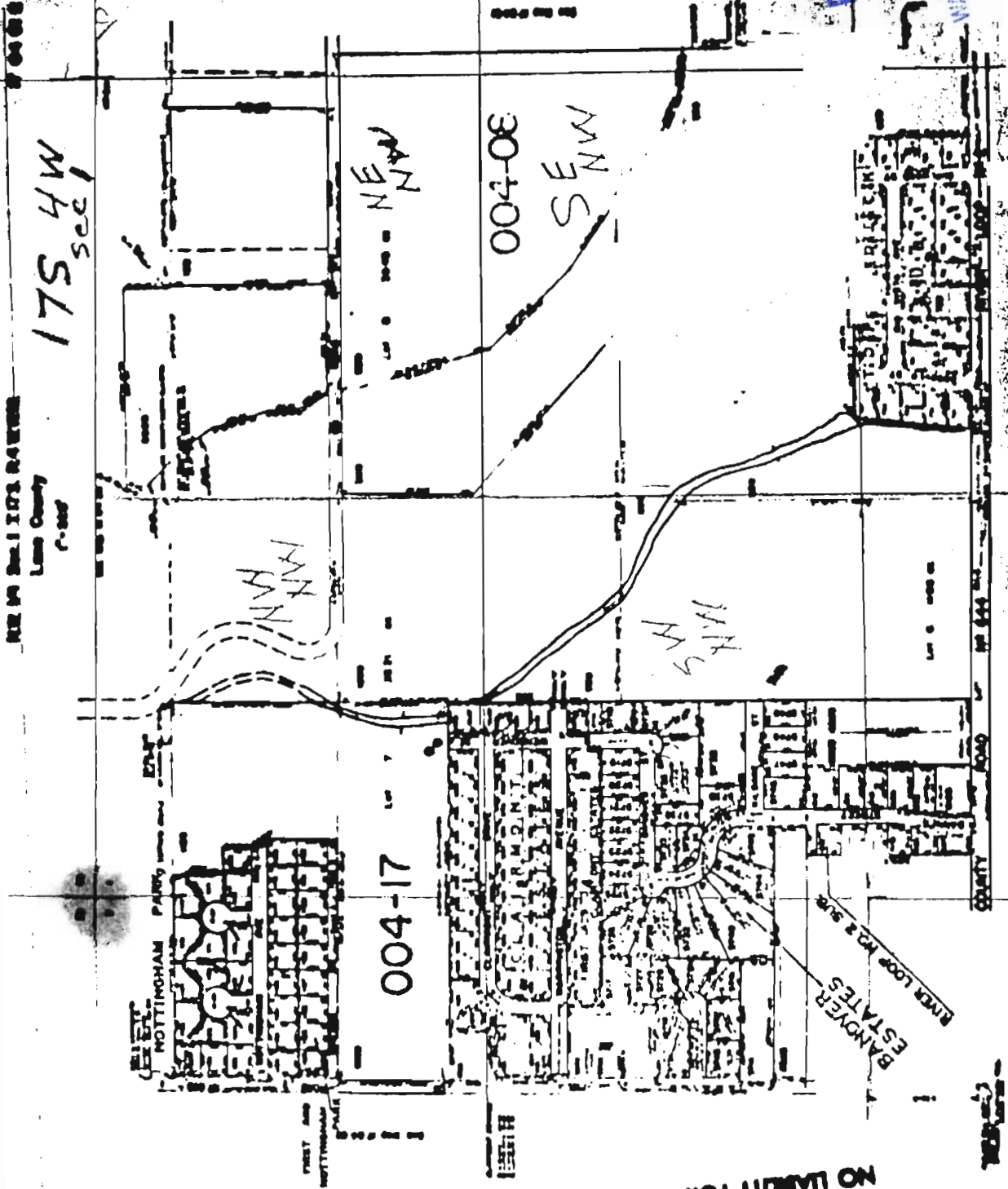
11 12

12

Scale 8" to mile



T 10881



NEE W. Sec. 1 17S 4W
 Lane County
 7-1987

THIS MAP IS TO ASSIST LOCATING
 PROPERTY. THE COMPANY MAKES
 NO LIABILITY FOR INACCURACIES.

RECEIVED

MAY 15 2002

WATER RESOURCES DEPT
 SALEM, OREGON