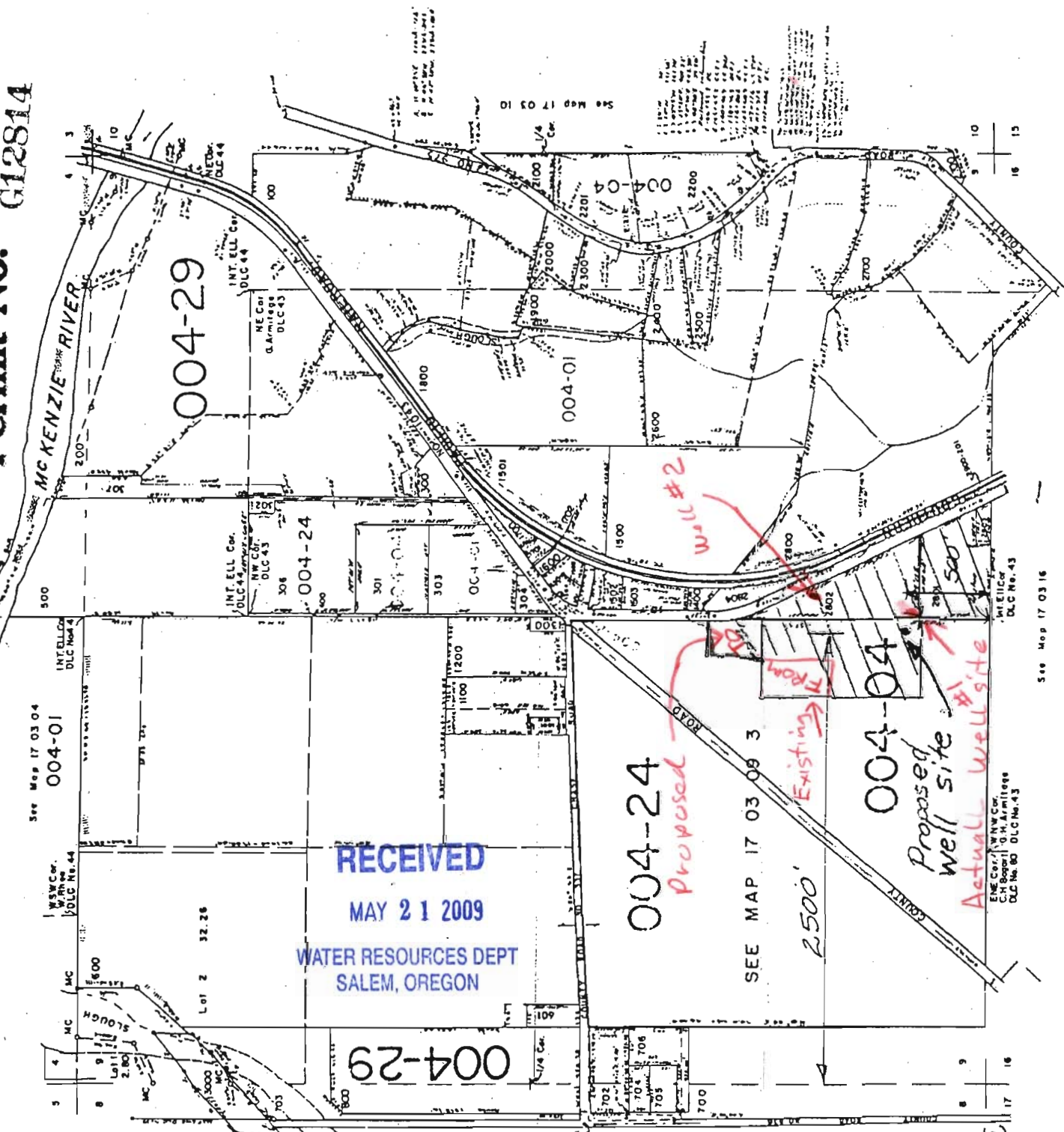


Application No. 6-14160  
 Permit No. G12814



RECEIVED  
 MAY 21 2009  
 WATER RESOURCES DEPT  
 SALEM, OREGON

REF ID: A611995  
 AUG 1 1995  
 WATER RESOURCES DEPT.  
 SALEM, OREGON

Getting back to 004-01  
 104 WRB  
 Thomas F. Poage  
 Nov. 19, 1987  
 STATE OF OREGON

total land 004-29  
 area = 22a  
 13a in SW 1/4 of SE 1/4  
 9a in SE 1/4 of SW 1/4  
 of sec 9

Well is 2500'  
 East and 500'  
 North of the  
 South west corner  
 of section 9, T17S,  
 R.3W of WM

See Map 17 03 16

SEE MAP 17 03 09 3

Proposed well site

Actual well site

Proposed

Existing

2500'

Proposed Road

Well #2

See Map 17 03 04

004-01

004-24

004-29

004-01

004-01

004-01

004-01

004-01

004-01

004-01

004-01

004-01

004-01

004-01

004-01

004-01

004-01

004-01

004-01

004-01

004-01

004-01

004-01

004-01

004-01

004-01

004-01

004-01

004-01

004-01

004-01

004-01

004-01

004-01

004-01

004-01

004-01

004-01

004-01

004-01

004-01

004-01

004-01

004-01

004-01

004-01

004-01

004-01

004-01

004-01

004-01

004-01