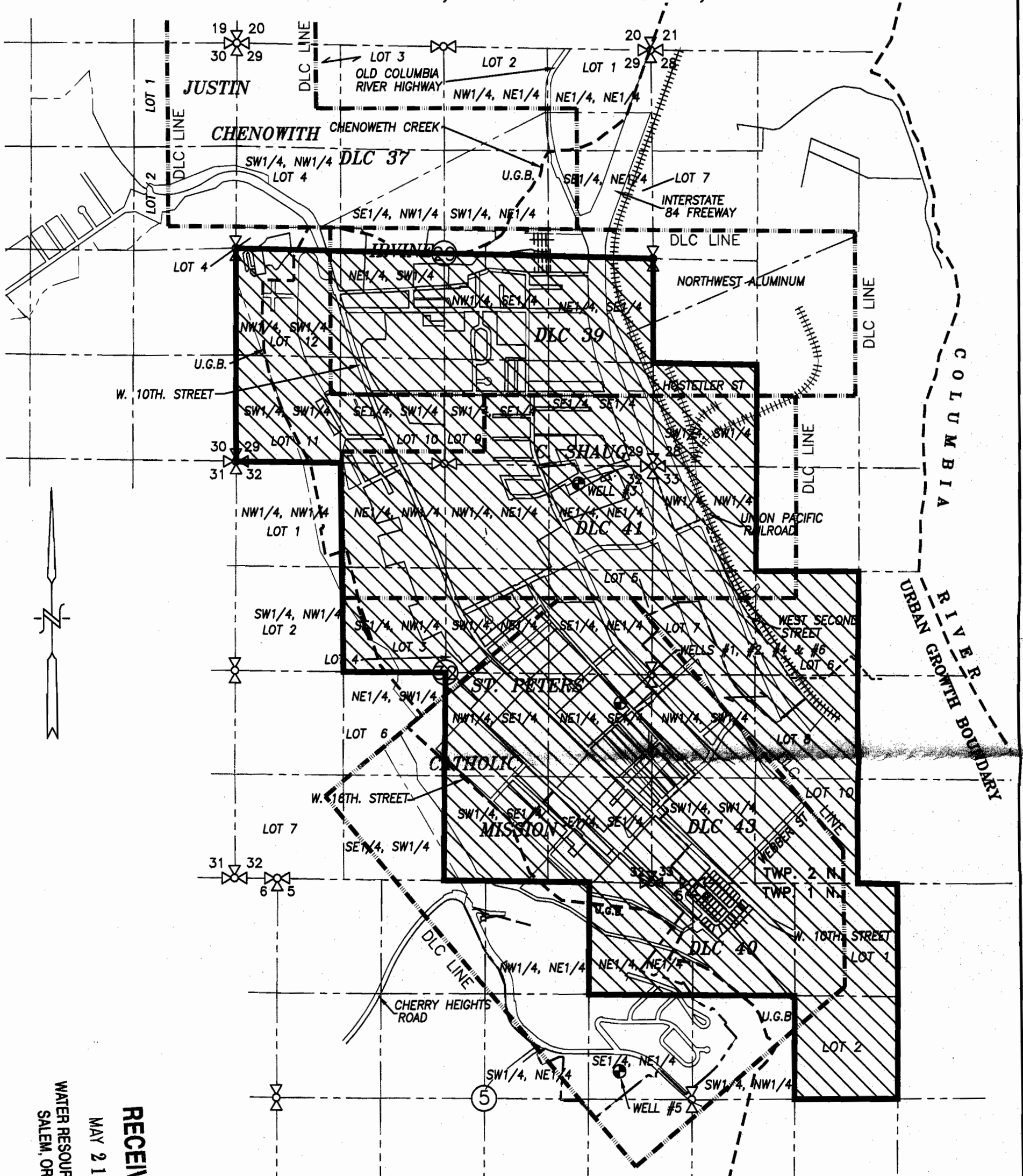


SECTIONS 29, 32 & 33, TWP.2 N. RANGE 13 E. W.M.
CITY OF THE DALLES, WASCO COUNTY, OREGON



RECEIVED
MAY 21 2009
WATER RESOURCES DEPT
SALEM, OREGON

**GROUND WATER REGISTRATION
MODIFICATION "FROM" MAP**

SCALE: 1" = 1320'

REGISTRATION No. GR-1645 & GR-1646
IN THE NAME OF:
CHENOWITH WATER P.U.D.

DATE: MAY 20, 2009

BY: **TENNESON ENGINEERING CORP.**
3313 W. 2ND. STREET, SUITE 100
THE DALLES, OREGON, 97058
PH. (541) 296-9177
FAX (541) 296-6657



LEGEND:

 GROUP DOMESTIC AREA TO BE MODIFIED

NOTES:

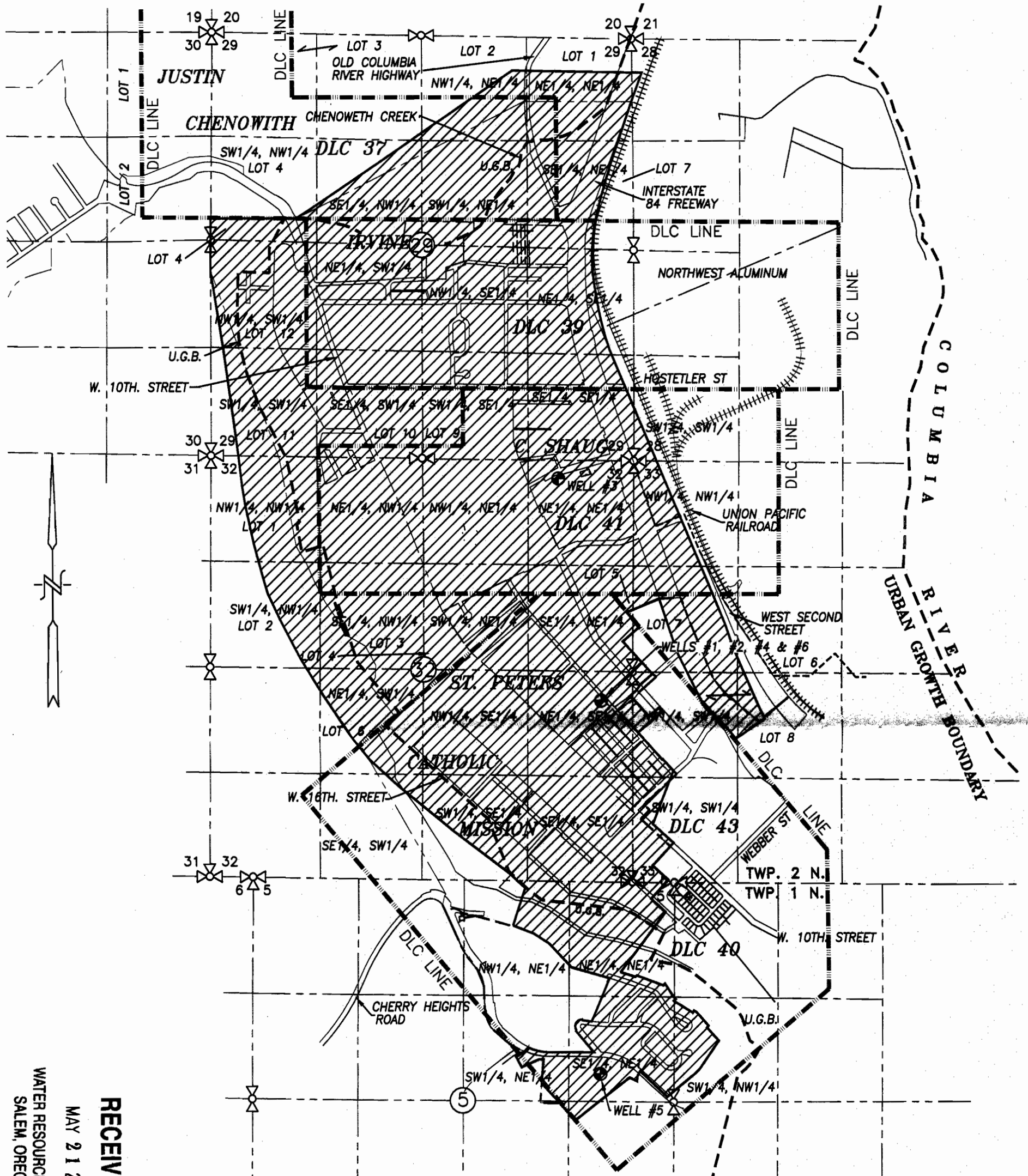
- 1) WELL #5 IS 2450' S. & 750' W OF NE CORNER, SECTION 5.
- 2) WELL #3 IS 2350' N. & 920' W. OF THE E1/4 CORNER, SECTION 32
- 3) SEE SHEET 3 FOR WELLS 1, 2, 4, & 6.



EXPIRES: 06/30/2010

NOTE:
"THIS MAP IS NOT INTENDED TO PROVIDE DIMENSIONS OR LOCATIONS OF PROPERTY OWNERSHIP LINES."

SECTIONS 28, 29, 32 & 33, TWP.2 N. RANGE 13 E. W.M.
 AND SECTIONS 4 & 5, TWP.1 N. RANGE 13 E. W.M.
 CITY OF THE DALLES, WASCO COUNTY, OREGON



**GROUND WATER REGISTRATION
 MODIFICATION "TO" MAP**

SCALE: 1" = 1320'

REGISTRATION No. GR-1645 & GR-1646

IN THE NAME OF:
CHENOWITH WATER P.U.D.

DATE: MAY 21, 2009

BY: **TENNESON ENGINEERING CORP.**
 3313 W. 2ND. STREET, SUITE 100
 THE DALLES, OREGON. 97058
 PH. (541) 296-9177
 FAX (541) 296-6657



LEGEND:

PROPOSED AREA OF MUNICIPAL USE BY P.U.D.

NOTES:

- 1) WELL #5 IS 2450' S. & 750' W OF NE CORNER, SECTION 5.
- 2) WELL #3 IS 2350' N. & 920' W. OF THE E1/4 CORNER, SECTION 32.
- 3) SEE SHEET 3 FOR WELLS 1, 2, 4, & 6.



EXPIRES: 06/30/2010

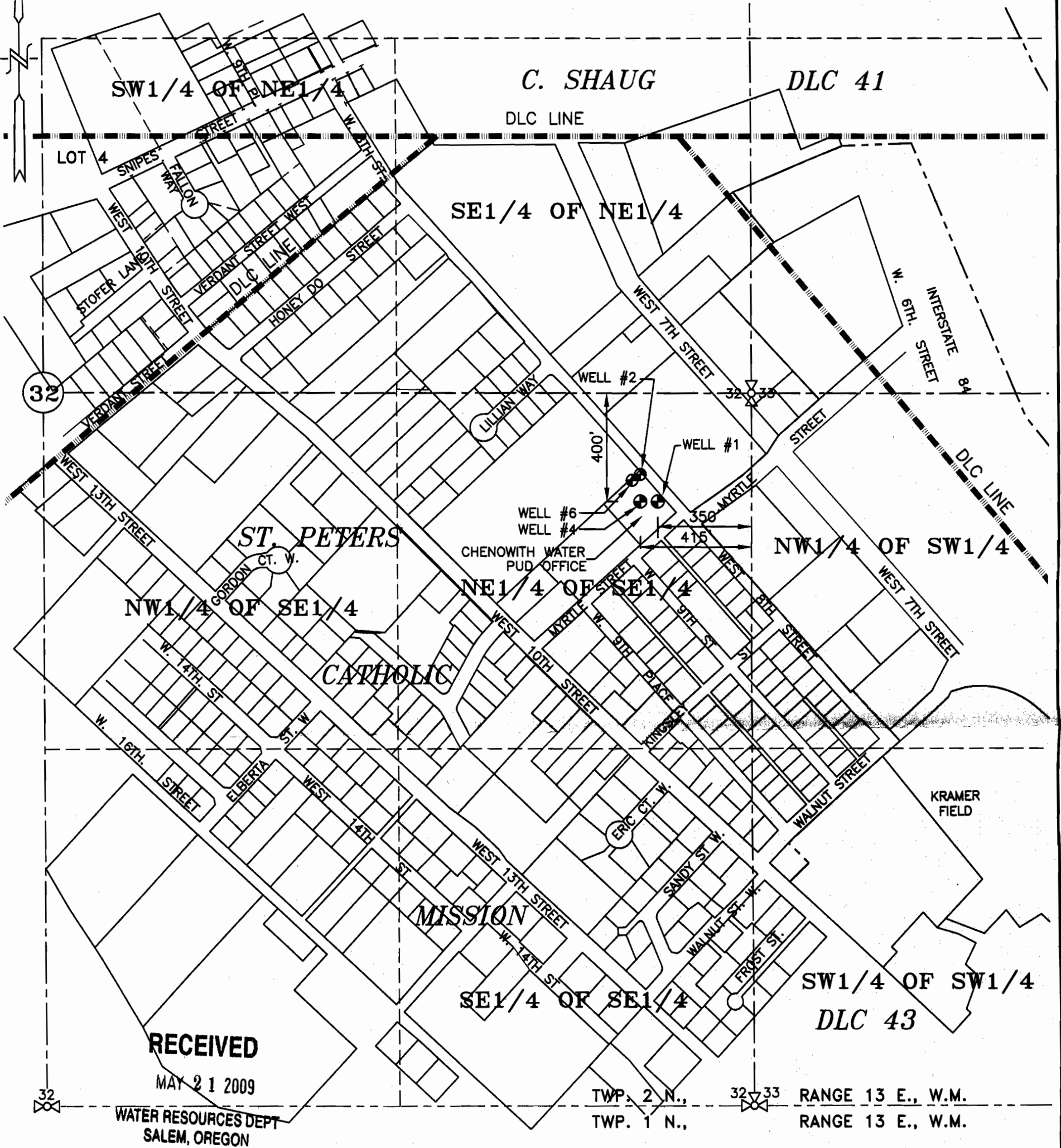
NOTE:

"THIS MAP IS NOT INTENDED TO PROVIDE DIMENSIONS OR LOCATIONS OF PROPERTY OWNERSHIP LINES."

RECEIVED
 MAY 21 2009
 WATER RESOURCES DEPT
 SALEM, OREGON

10885

SECTIONS 28, 29, 32 & 33, TWP.2 N. RANGE 13 E. W.M.
 AND SECTIONS 4 & 5, TWP.1 N. RANGE 13 E. W.M.
 CITY OF THE DALLES, WASCO COUNTY, OREGON



● EXISTING WELL #1, 400' S. & 300' W. WELL #2, 350' S. & 400' W.,
 ● WELL #4: 400' S. & 415' W. ALL FROM THE E.1/4 CORNER, SECTION 32
 ● WELL #6: 315' S. & 430' W. FROM THE E.1/4 CORNER, SECTION 32

GROUND WATER REGISTRATION WELL DETAIL MAP

T 70885

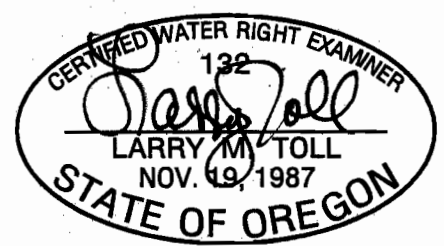
SCALE: 1" = 400'

REGISTRATION No. GR-1645 & GR-1646

LEGEND:
 - - - - - D.L.C. LINE

IN THE NAME OF:
CHENOWITH WATER P.U.D.

BY: **TENNESON ENGINEERING CORP.**
 3313 W. 2ND. STREET, SUITE 100
 THE DALLES, OREGON. 97058
 PH. (541) 296-9177
 FAX (541) 296-6657



EXPIRES: 06/30/2010

DATE: MAY 20, 2009

NOTE:
 "THIS MAP IS NOT INTENDED TO
 PROVIDE DIMENSIONS OR LOCATIONS
 OF PROPERTY OWNERSHIP LINES."