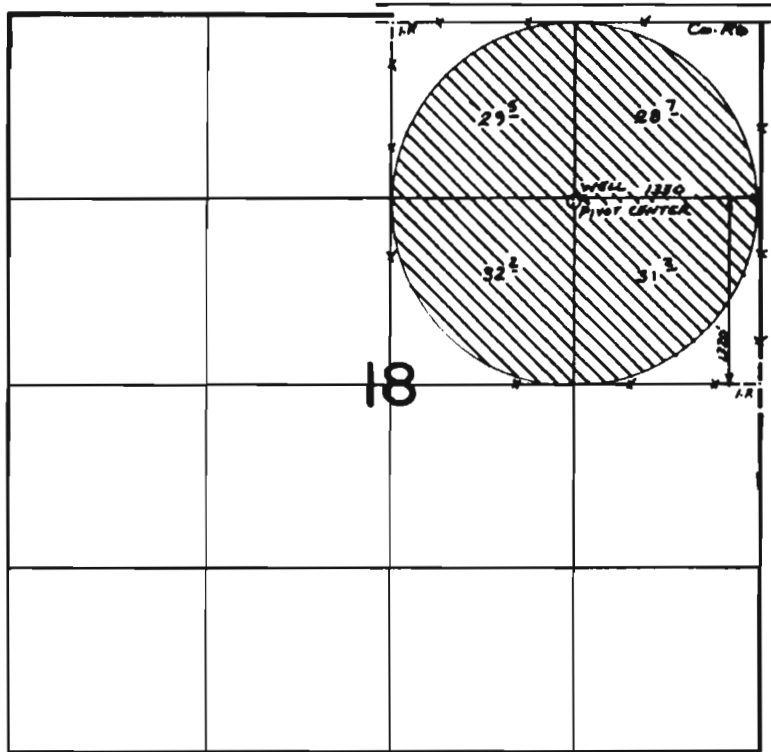


G9651
52640

"FROM"

T.27S.,R.16E.,W.M.

TAX LOTS 100, 200, 300, 400 & 513



FINAL PROOF SURVEY
UNDER

Application No. G:10680 Permit No. G:9651.....
IN NAME OF

ROBERT & ARLINE CLINKENBEARD

Surveyed July 25, 1983, by L.M. TOLL.....

T 10903

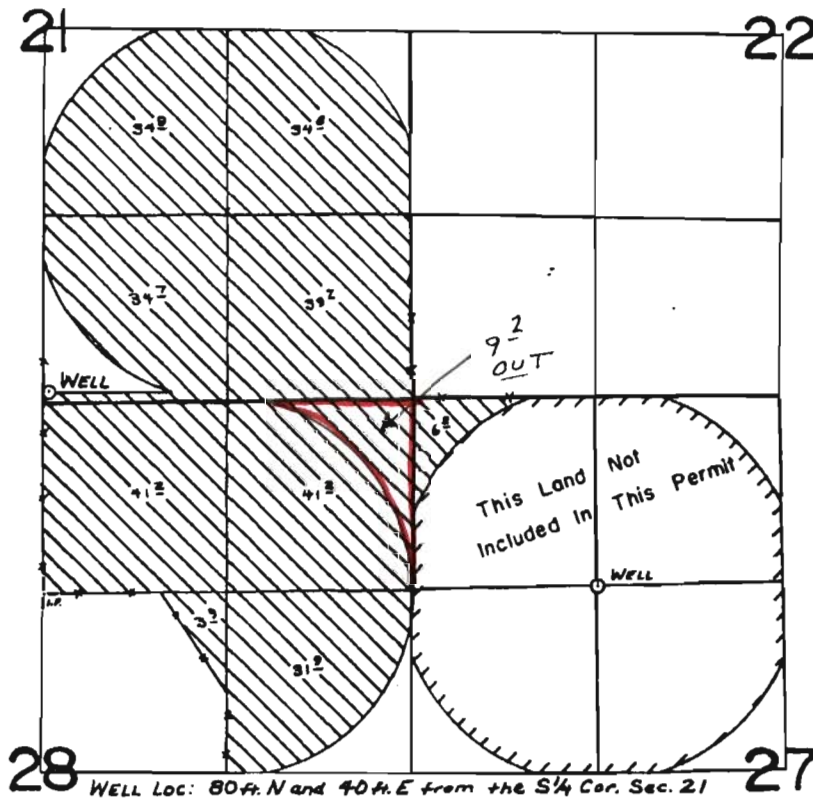
RECEIVED

JUN 11 2009

WATER RESOURCES DEPT
SALEM, OREGON

G 8888
T 8020
51770
77742
T 8020
T 9814

T.27S.,R.17E.,W.M.



FINAL PROOF SURVEY
UNDER

Application No. G:9831. Permit No. G:8888.....
IN NAME OF

.....**MARVIN G. NAGELY**.....

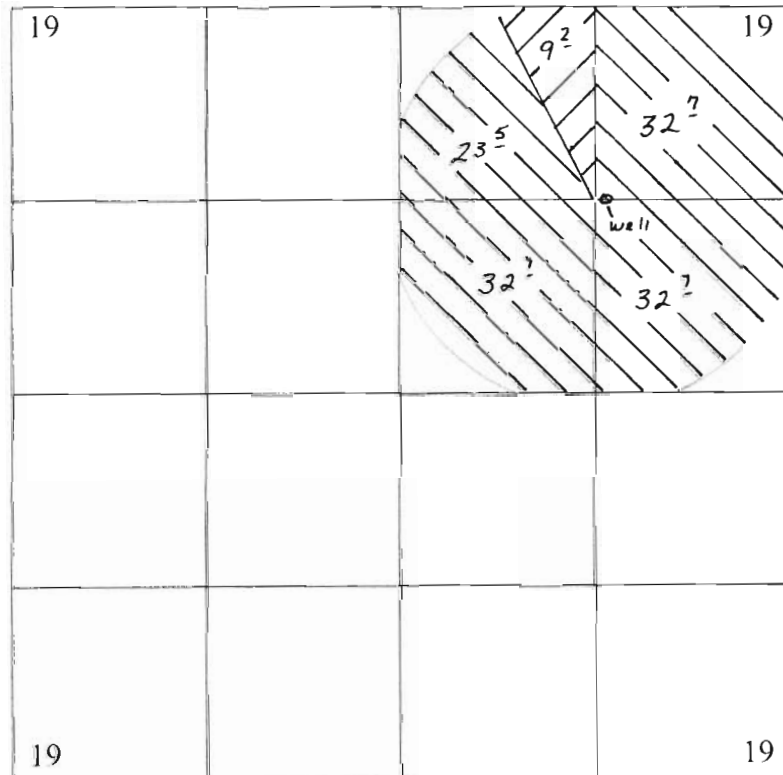
Surveyed OCT. 29, 1981, by J. TOLL.....

T 10903

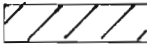

RECEIVED
JUN 11 2009
WATER RESOURCES DEPT
SALEM, OREGON

T 27 S, R 17 E, W.M.
TAX LOT 100, LAKE COUNTY OREGON

“TO”



Well located 1320' S & 1280' W from the NE Corner, Sec 19.

 C # 81517
 C # 52640

SCALE 1" = 1320'

RECEIVED

JUN 1 1 2009

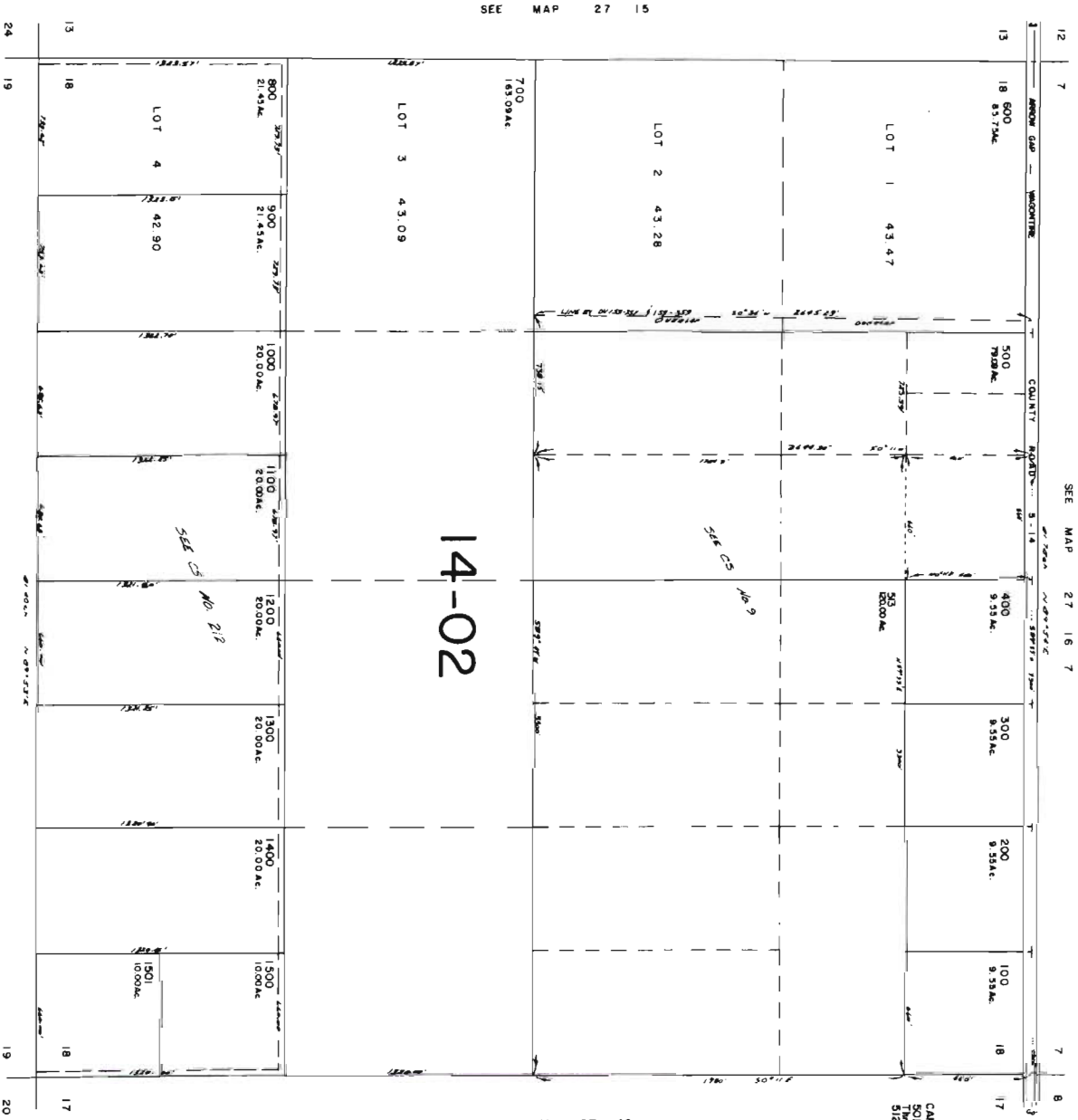
WATER RESOURCES DEPT
SALEM, OREGON

T 10903

THIS MAP WAS PREPARED FOR
ASSESSMENT PURPOSE ONLY

SECTION 18 T.27S. R.16E. W.M.
LAKE COUNTY
1" = 400'

27 16 18



SEE MAP 27 15

SEE MAP 27 16

SEE MAP 27 18 19

RECEIVED

JUN 11 2009

WATER RESOURCES DEPT
SALEM, OREGON

10903

27 16 18

SEE MAP
27 17 19
14-03

SEE MAP
27 17 20

4600
160.00Ac.
4701
280.00Ac.

SEE MAP
27 17 22

SEE MAP
27 17 21

SEE MAP
27 17 30

14-02

SEE MAP
27 17 28

4703
159.94 Ac.
4702
158.18 Ac.
4704
238.18 Ac.
4704

SEE MAP
27 17 21

SEE MAP

SEE MAP

SEE MAP

SEE MAP
NO. 5-1A-E MAP
27 17 34A

SEE MAP
27 17 35B

ROAD

COUNTY ROAD

14-0

RECEIVED

JUN 11 2009

WATER RESOURCES DEPT
SALEM, OREGON

1090

1

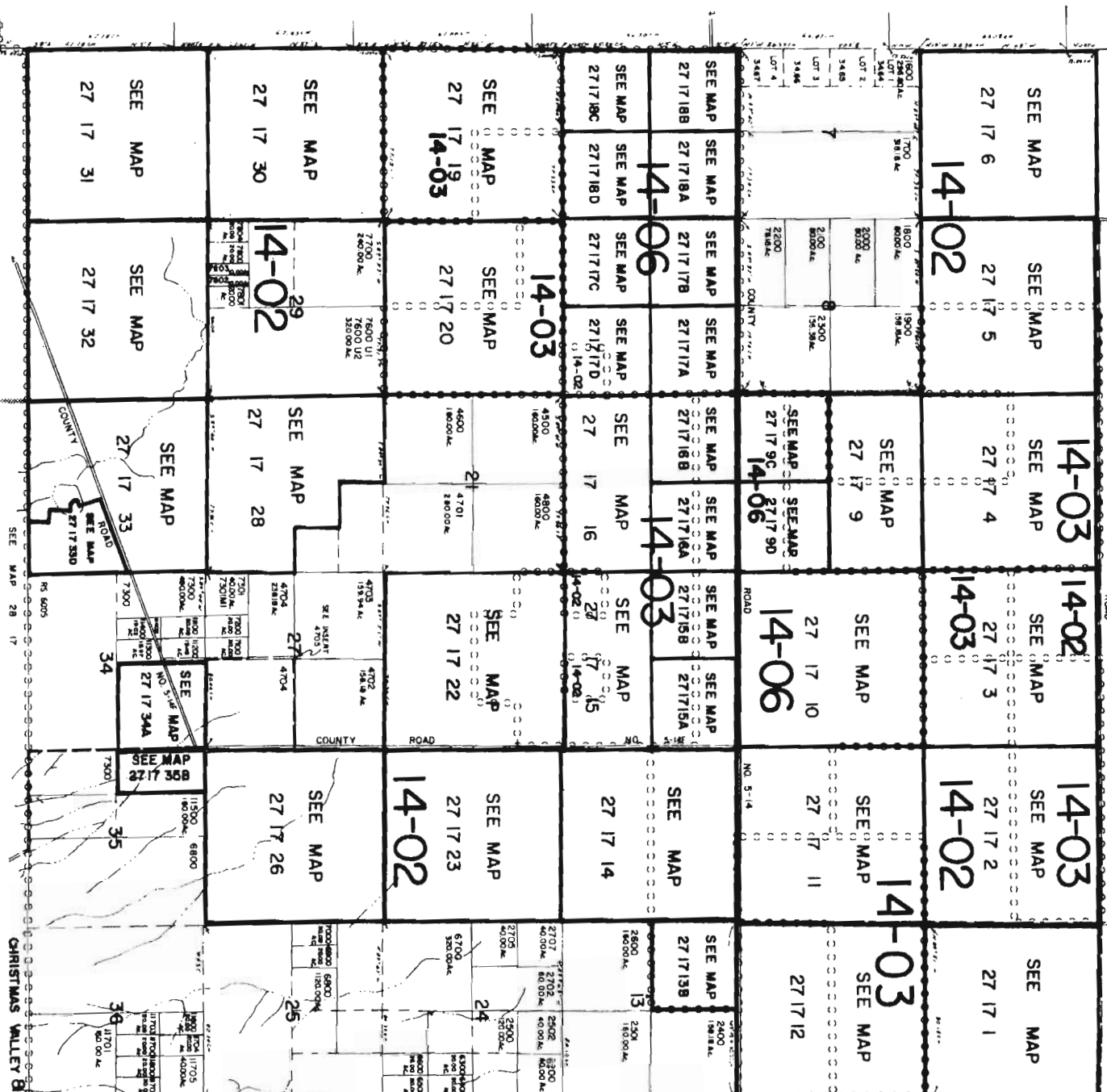
THIS MAP WAS PREPARED FOR ASSESSMENT PURPOSE ONLY

T.27S. R.17E. W.M.
LAKE COUNTY
1" = 2000'

SEE MAP 26 17

27 17
8 INDEX
CHRISTMAS VALLEY

SEE MAP 27 16



RECEIVED

JUN 11 2009

WATER RESOURCES DEPT
SALEM, OREGON

SEE MAP 27 18

Revised
5/21/2009, EB
27 17

CHRISTMAS VALLEY 8 INDEX

10903

10903