

Exhibit A
COID Alfalfa Piping Project Conserved Water Application

Project Maps attached

UNITED STATES
DEPARTMENT OF THE INTERIOR
BUREAU OF RECLAMATION

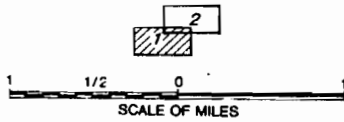
CENTRAL OREGON IRRIGATION DISTRICT
OREGON

SEEPAGE RATES
CENTRAL OREGON CANAL

DENVER, COLORADO

AUGUST 1991

SHEET 1 OF 2



CONTOUR INTERVAL 50 FEET
DATUM IS MEAN SEA LEVEL &
NATIONAL GEODETIC VERTICAL DATUM OF 1929

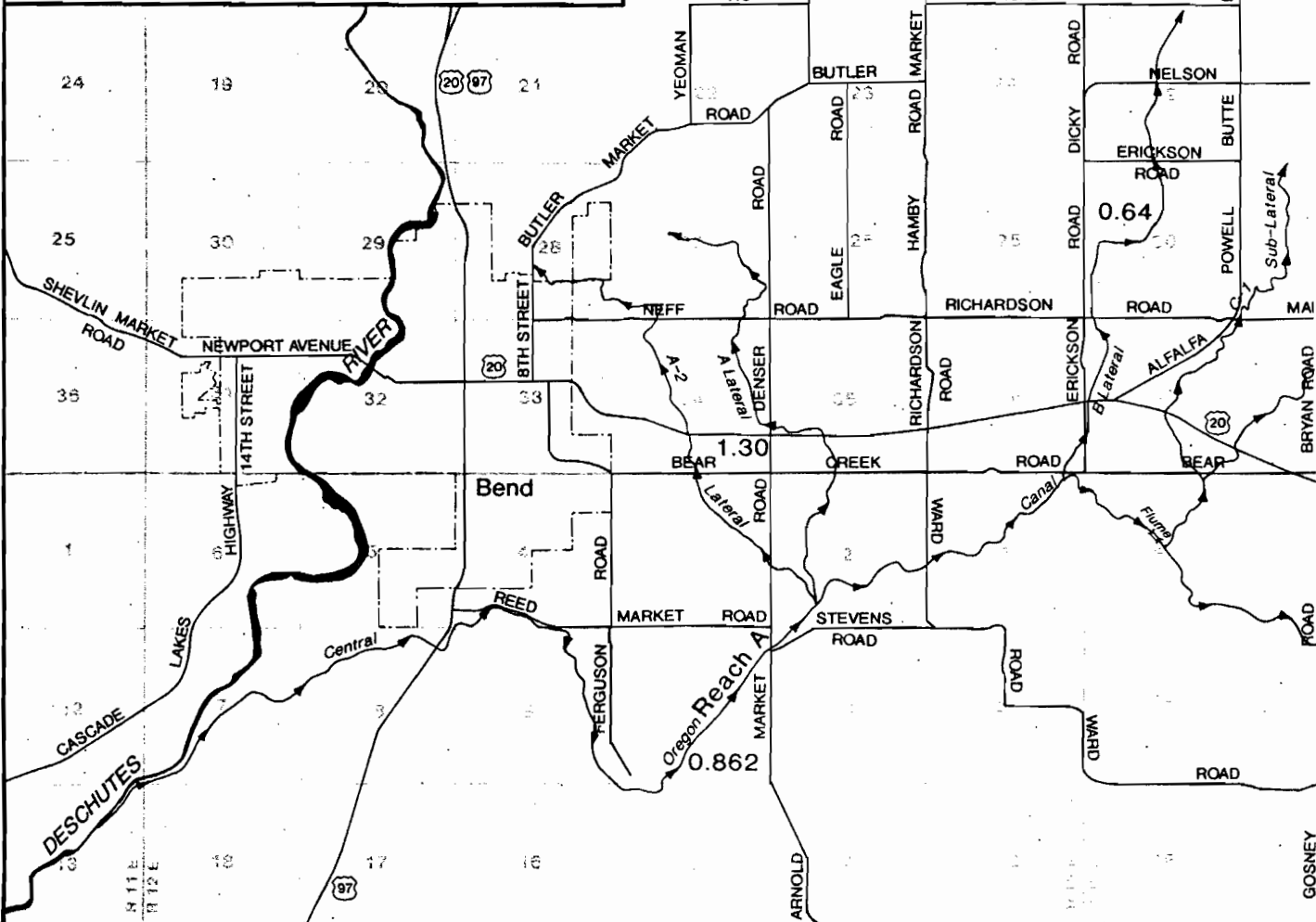


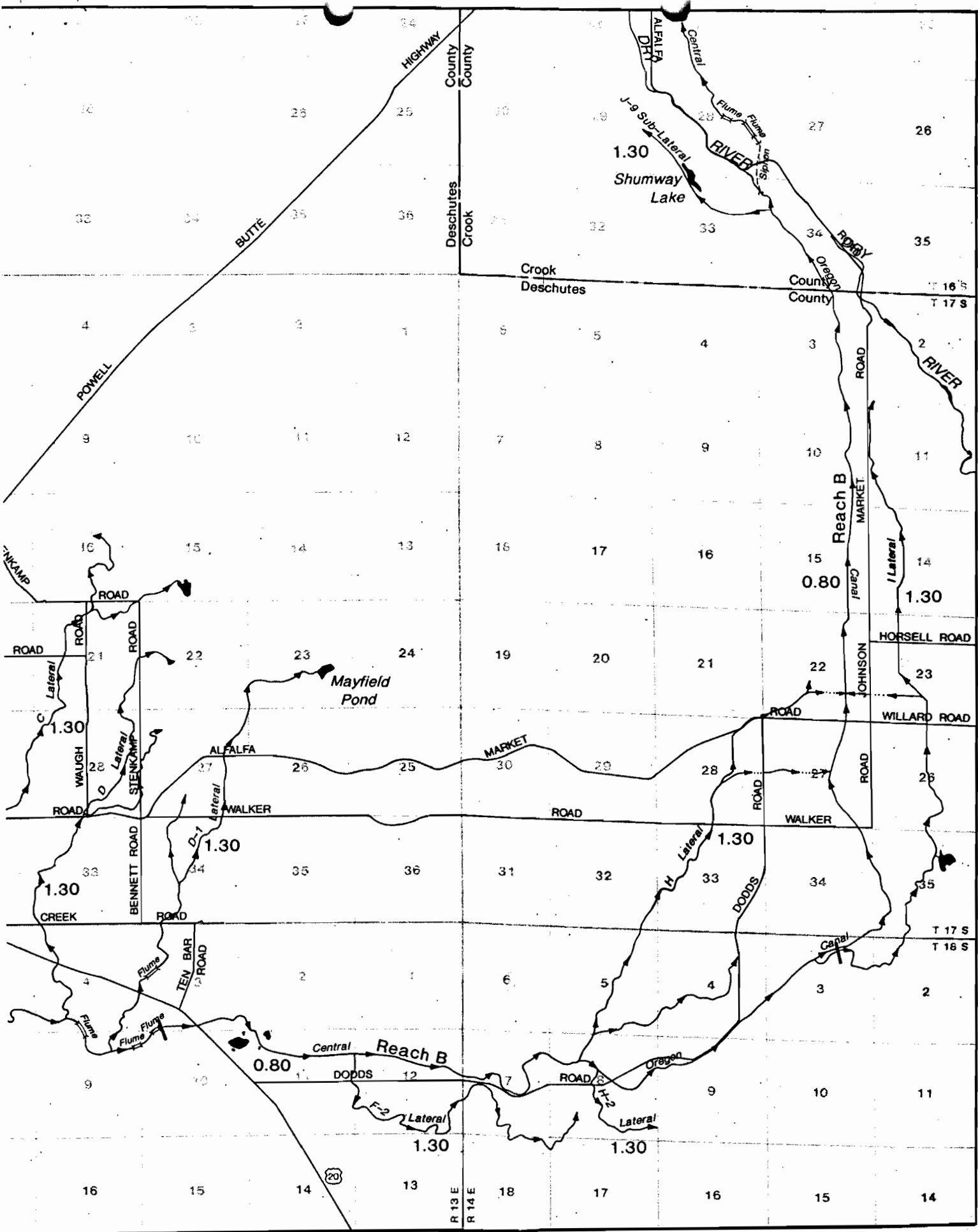
EXPLANATION

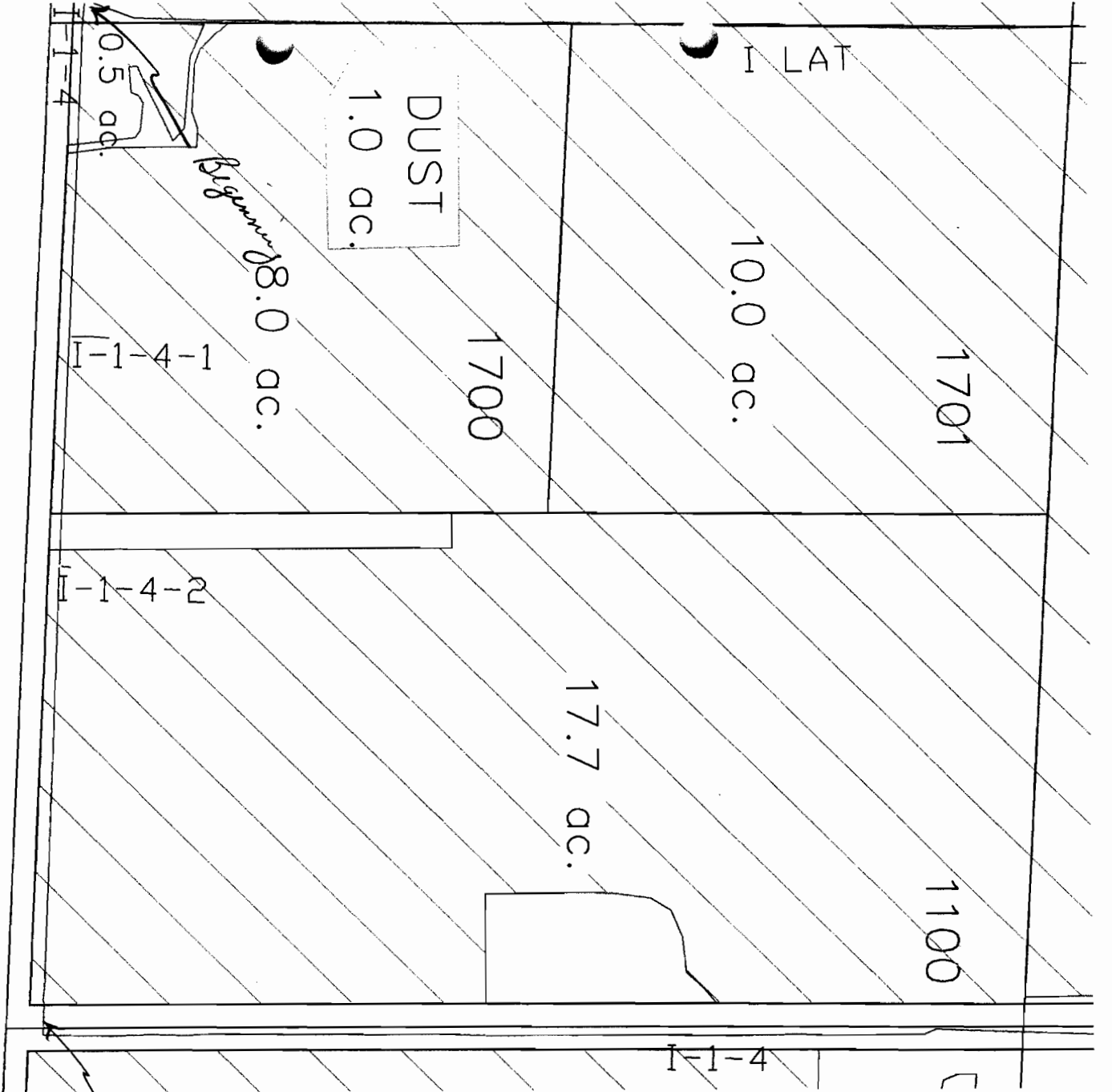
0.862 - Seepage rate in $ft^3/ft^2/day$

— - Division line between seepage rates

MAP NO. 112-100-909

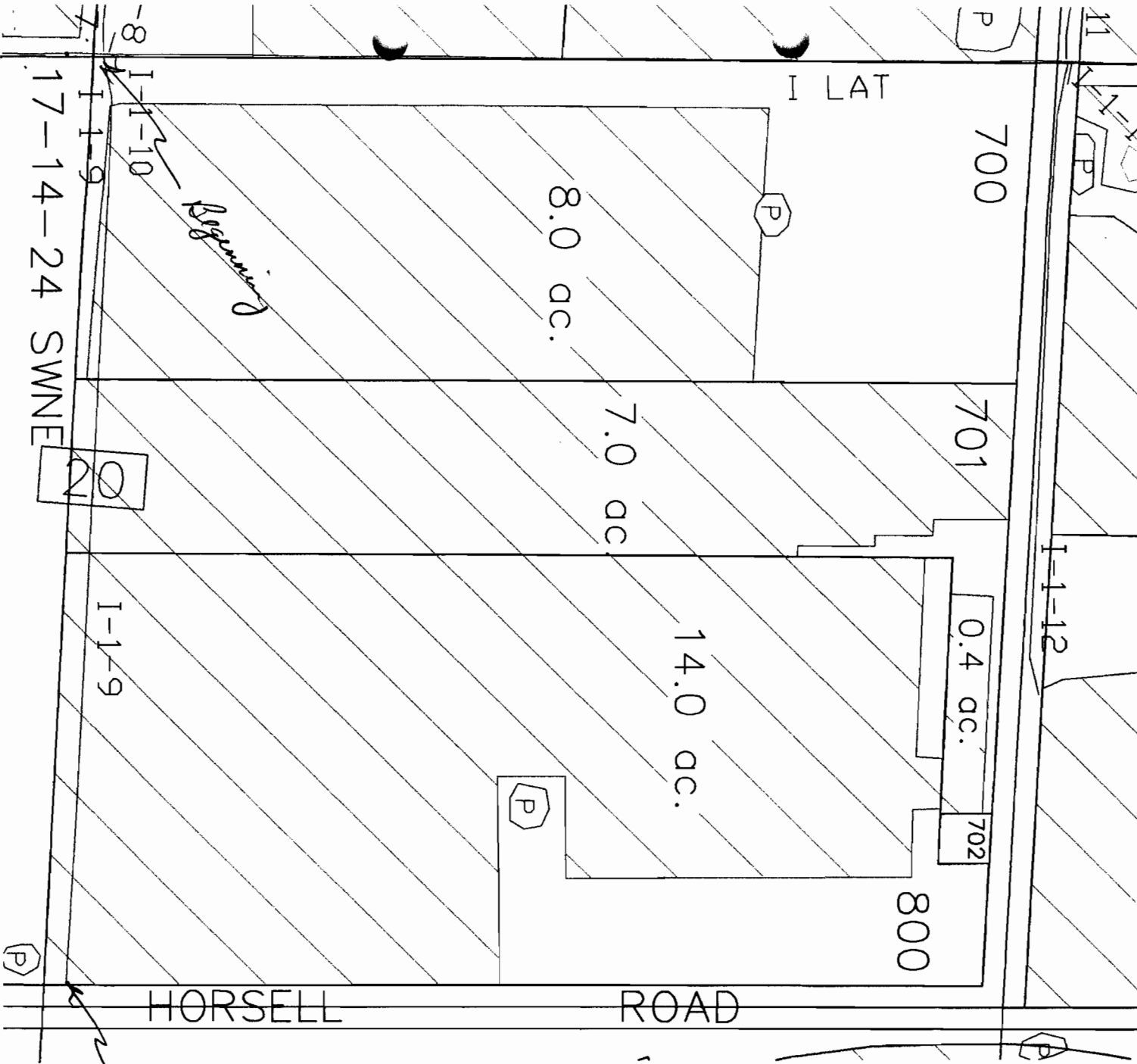






17-14-24 SWSE

SCALE: 1" = 200'



Scale: 1" = 200'

17-14-24 NENW

POST
0.2 ac.

0.2 ac.

37.6 ac.

1-1-11
300-14-11

40

2
1-11-1
new

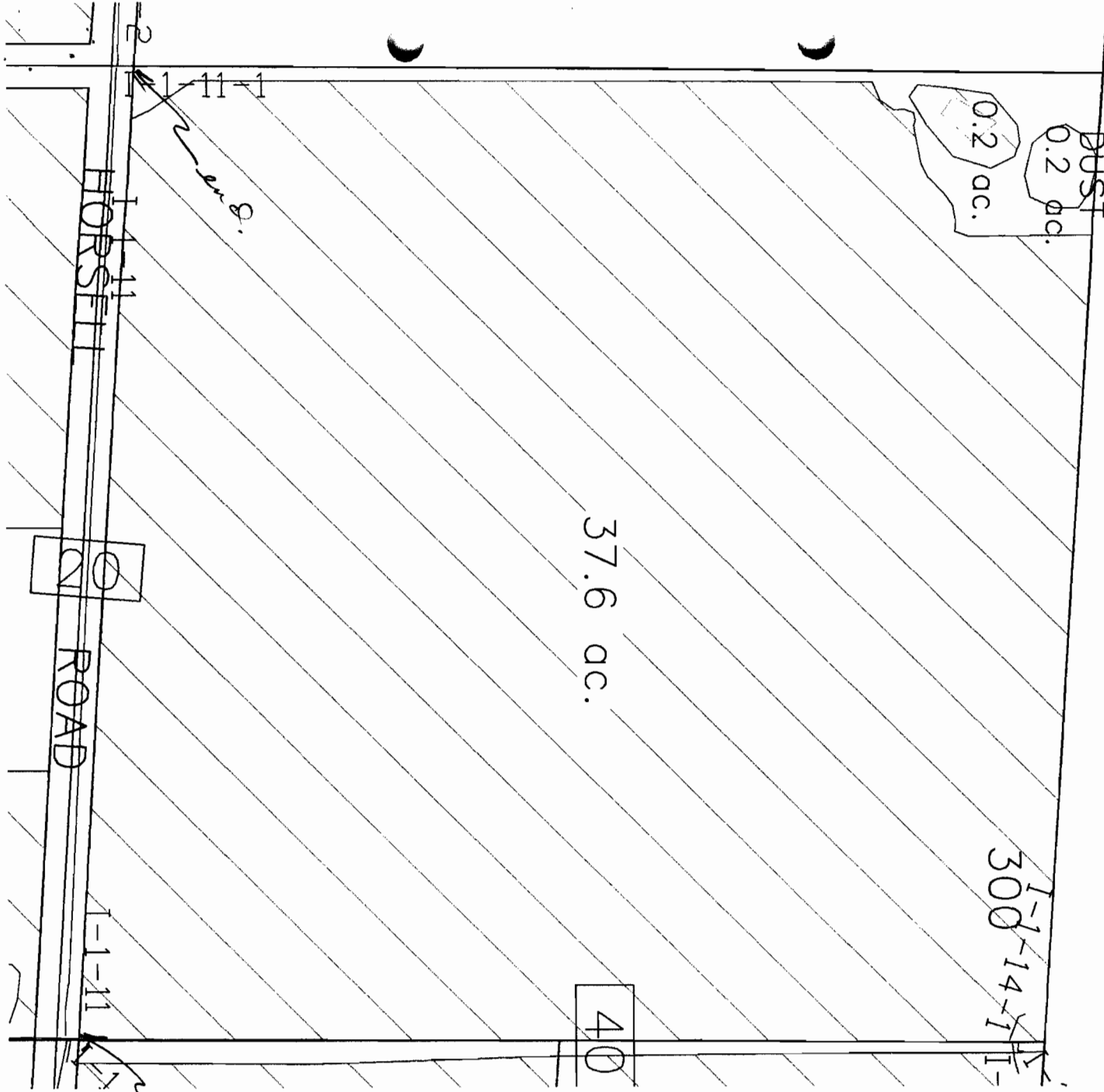
20

ROAD

1-1-11

Beginning

Scale: 1" = 200'



2-7-03

Proposed

I-22
I-21

800

17-14-14 SESW

RD
20

I-2

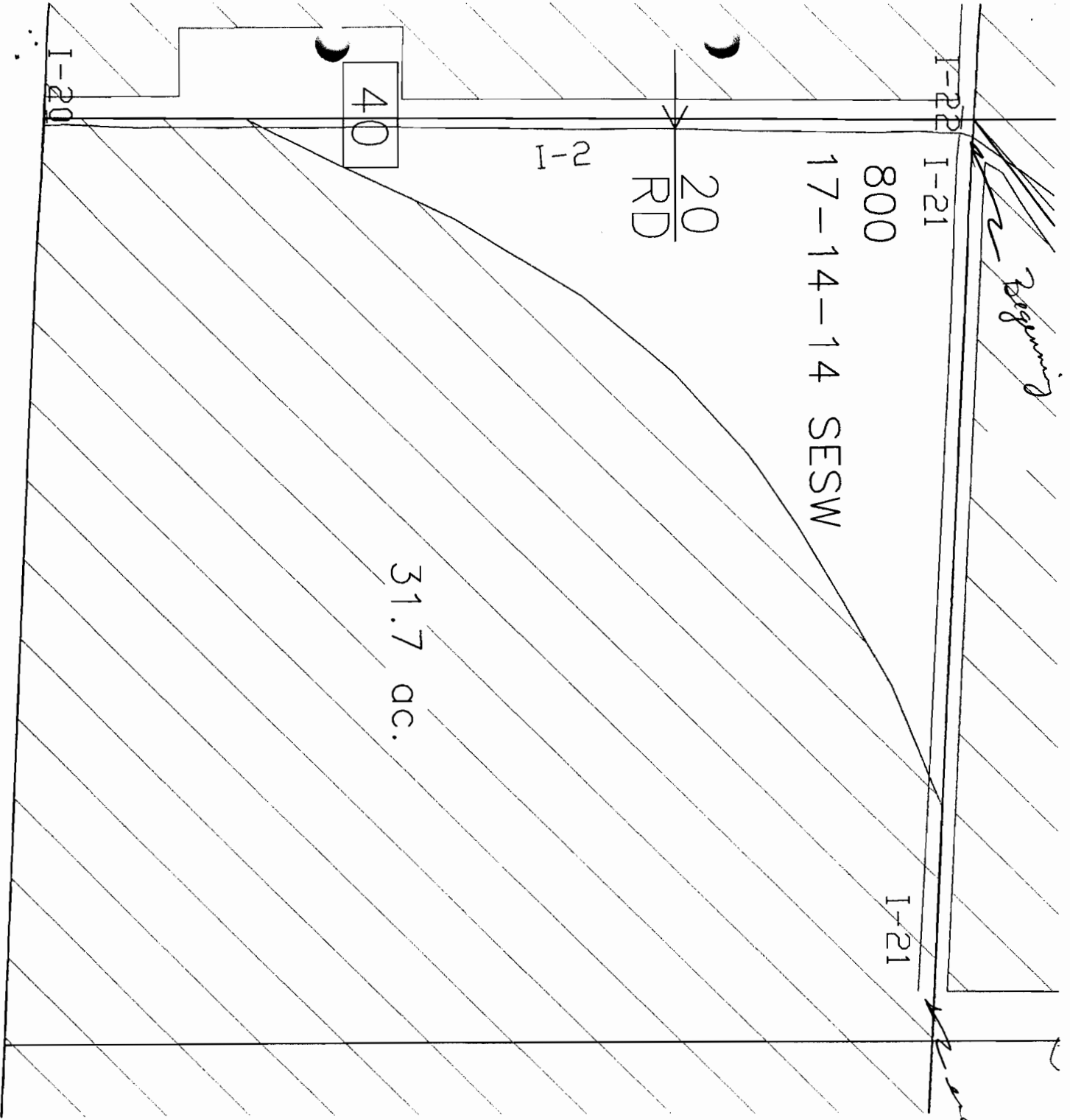
40

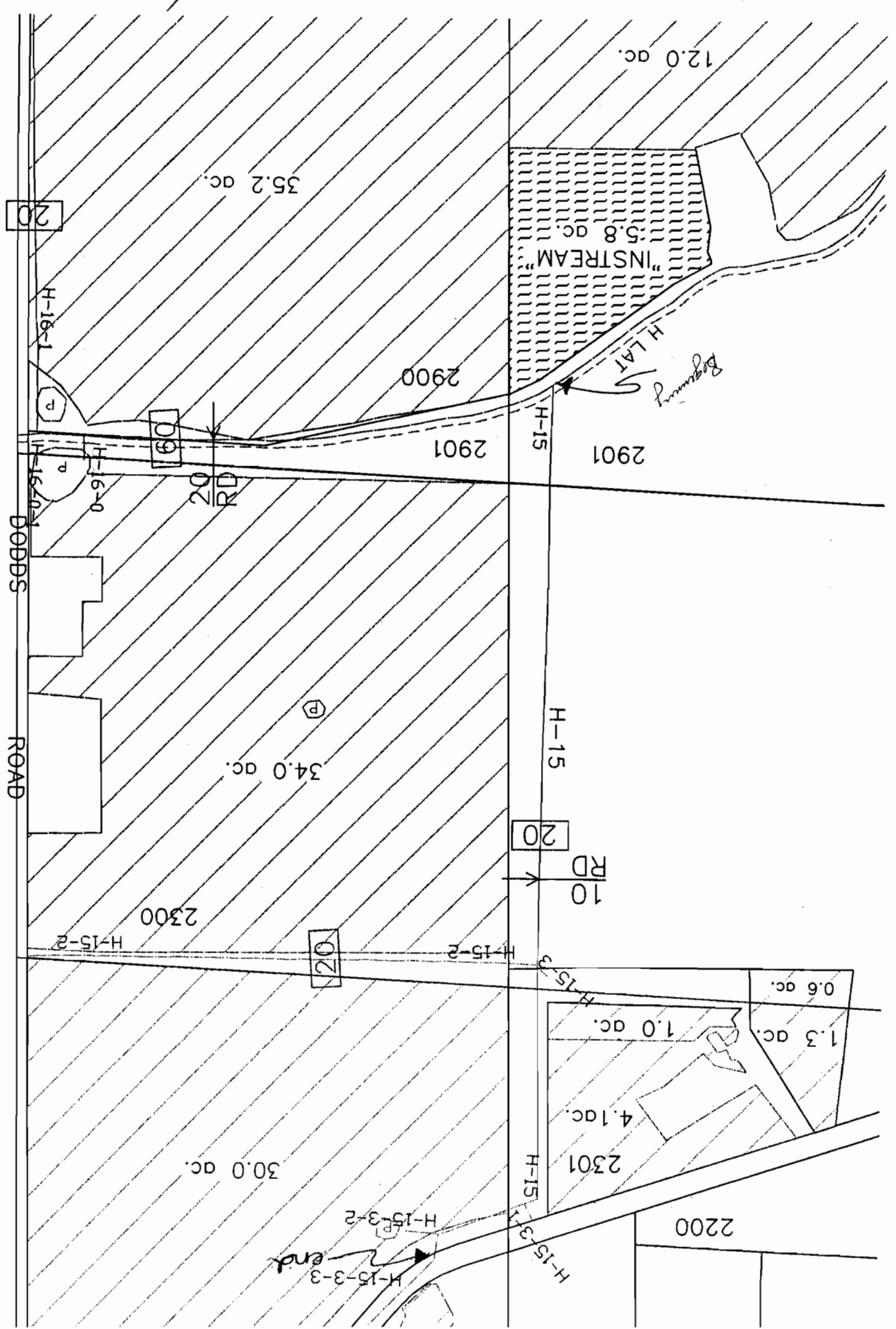
31.7 ac.

I-21

I-20

SCALE: 1" = 200'





20

DODD'S ROAD

60

RD

20

RD

20

20

20

2200

12.0 ac.

35.2 ac.

5.8 ac.

2900

2901

2901

34.0 ac.

2300

H-15-2

H-15-2

30.0 ac.

2301

4.1 ac.

0.6 ac.

1.3 ac.

1.0 ac.

H-15-3-2

H-15-3-3

H-15-3-1

H-15

H-15

H-16-1

H-16-0

"INSTREAM"
H LAT
beginning

end