

**RECEIVED**

JUN 29 2009

WATER RESOURCES DEPA  
SALEM, OREGON

**Attachment 1**

**Map**

---

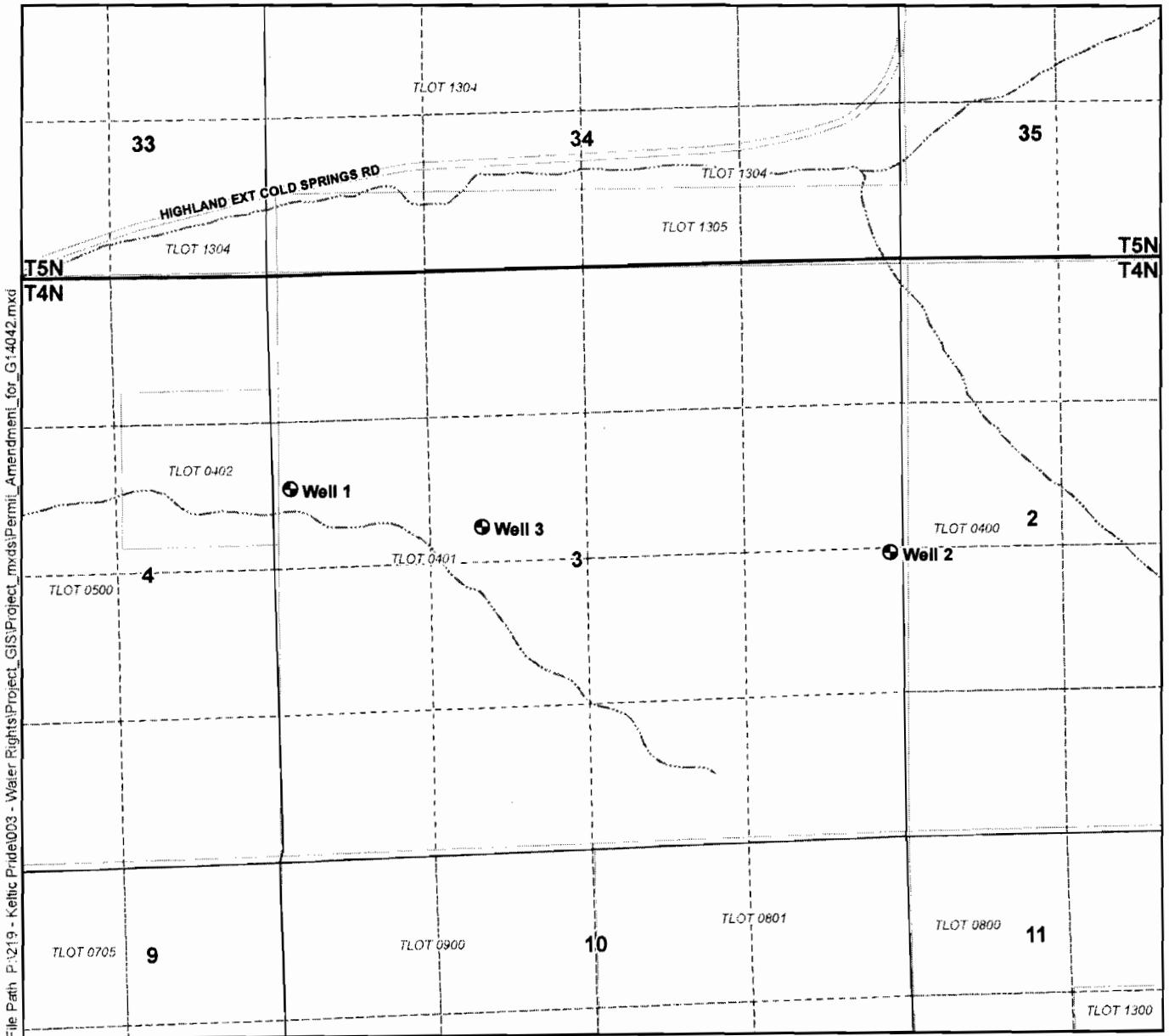
Application for a Permit Amendment – G-14042

T 10919

# Application for a Permit Amendment Amended Locations of Wells




Permit G-14042

Township 4 North, Range 30 East (W.M.)



File Path P:\219 - Kellic Price\003 - Water Rights\Project\_GIS\Project\_mxd\Permit\_Amendment\_for\_G-14042.mxd

### Legend

-  Amended Well Locations
-  Tax Lots
-  Watercourses

### Well Location Descriptions

- Well 1**  
Located 1800 feet South and 150 feet East from the NW corner of Section 3, Township 4 North, Range 30 East (W.M.)
- Well 2**  
Located 2490 feet South and 110 feet West from the NE corner of Section 3, Township 4 North, Range 30 East (W.M.)
- Well 3**  
Located 2165 feet South and 1745 feet East from the NW corner of Section 3, Township 4 North, Range 30 East (W.M.)

**RECEIVED**

JUN 29 2009

WATER RESOURCES DEPT  
SALEM, OREGON

### Map Information

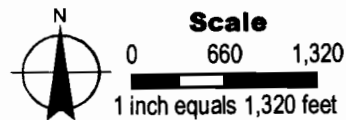
Projection: Oregon State Plane North Zone  
Datum: North American Datum of 1983  
Date: June 23, 2009  
Prepared By: GSI Water Solutions, Inc.

### Data Sources

Oregon Geospatial Data Clearinghouse, Umatilla County GIS

### Disclaimer

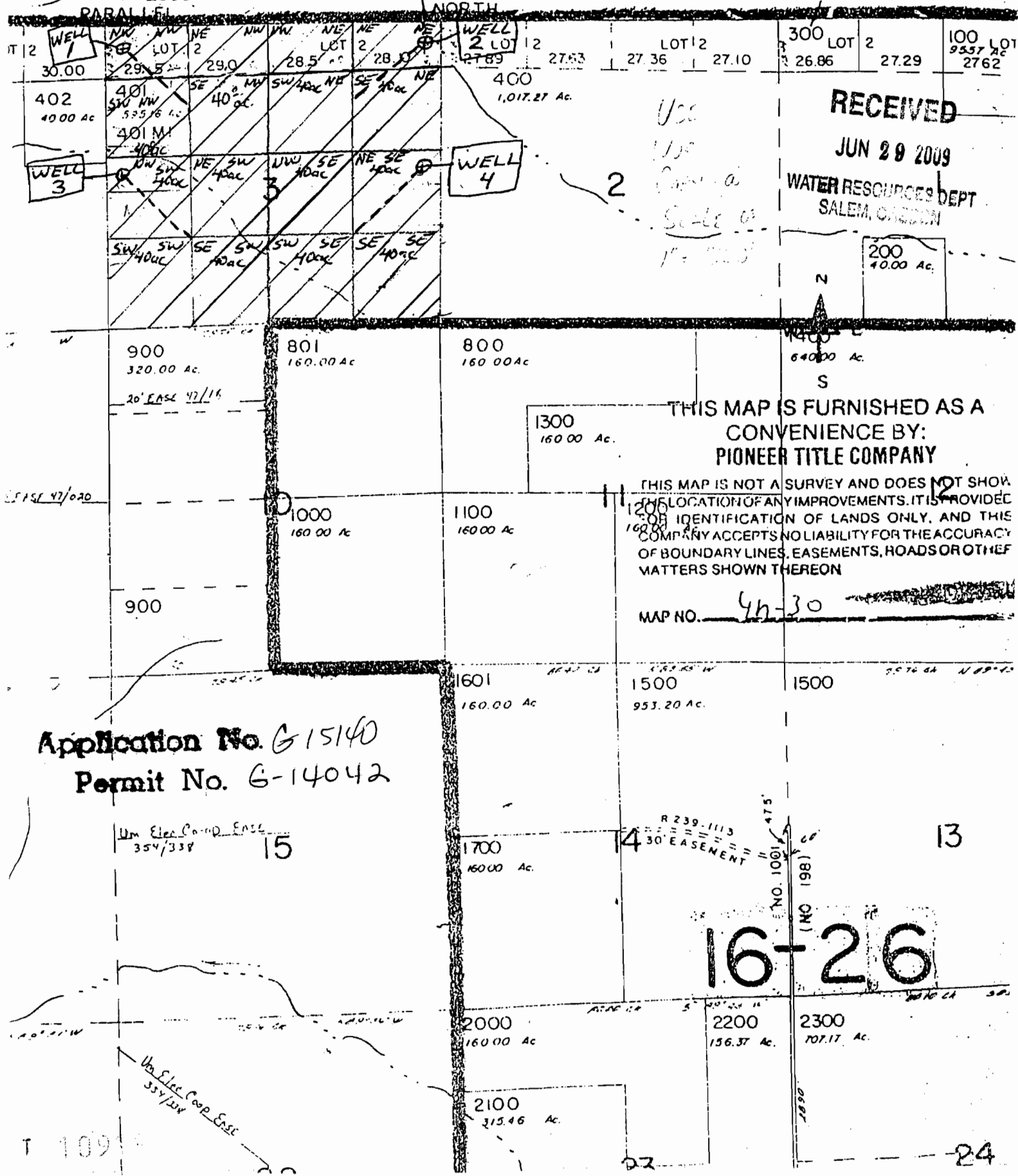
This map was prepared for the purpose of identifying the location of a water right only and it is not intended to provide legal dimensions or location of property ownership lines.



T 109 1

4 N. R. 30 E. W. M  $\oplus$  WELL LOCATION - Proposed  
 MATILLA COUNTY  
 1. 150'S and 50' E. of SW 1/4 corner of sec 3 4N30E  
 2. 150'S and 50' W of NE 1/4 corner of sec 3 4N30E  
 3. 250'S and 50' E of NW 1/4 corner of sec 3 4N30E  
 4. 250'S and 50' W of NE 1/4 corner of sec 3 4N30E

RECEIVED  
 G-14042  
 APR - 7 2000  
 Aerial Photo  
 WATER RESOURCES DEPT.  
 SALEM, OREGON  
 26.86 Ac.



Use  
 1/2  
 2  
 Scale of  
 1" = 2000'

RECEIVED  
 JUN 29 2009  
 WATER RESOURCES DEPT.  
 SALEM, OREGON

THIS MAP IS FURNISHED AS A  
 CONVENIENCE BY:  
 PIONEER TITLE COMPANY  
 THIS MAP IS NOT A SURVEY AND DOES NOT SHOW  
 THE LOCATION OF ANY IMPROVEMENTS. IT IS PROVIDED  
 FOR IDENTIFICATION OF LANDS ONLY, AND THIS  
 COMPANY ACCEPTS NO LIABILITY FOR THE ACCURACY  
 OF BOUNDARY LINES, EASEMENTS, ROADS OR OTHER  
 MATTERS SHOWN THEREON

Application No. G 15140  
 Permit No. G-14042

Um Elec Corp EASE  
 354/338 15

R 239-1113  
 30' EASEMENT  
 NO. 1001  
 (NO 198) 60

16-26

T 109

Um Elec Corp EASE  
 354/338

24