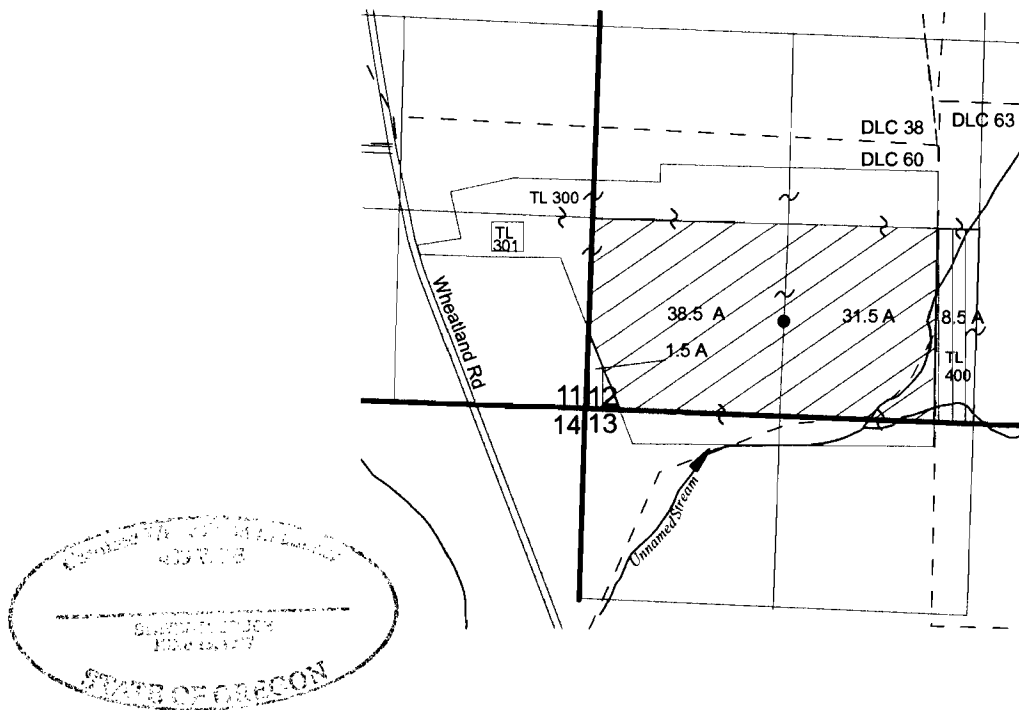


T6S, R3W, WM.  
 Sections 11, 12 and 13  
 Marion County, Oregon  
 Claim GR-670/Certificate GR-643  
 Groundwater Registration Modification  
 From Map



Well located 660 ft N and 1320 ft E from SW corner of Section 12

**Explanation**

- Well
- Place of Use to be Changed (70.0 Acres)
- GR-670 Remaining Right (10.0 Acres)



1 inch = 1,320 feet

October 7, 2009

THIS MAP IS NOT INTENDED TO  
 PROVIDE LEGAL DIMENSIONS OR  
 LOCATIONS OF PROPERTY  
 OWNERSHIP LINES.

**RECEIVED**

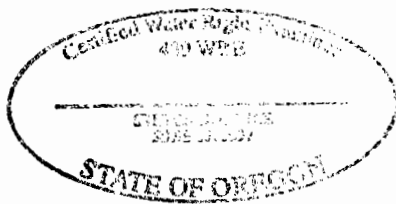
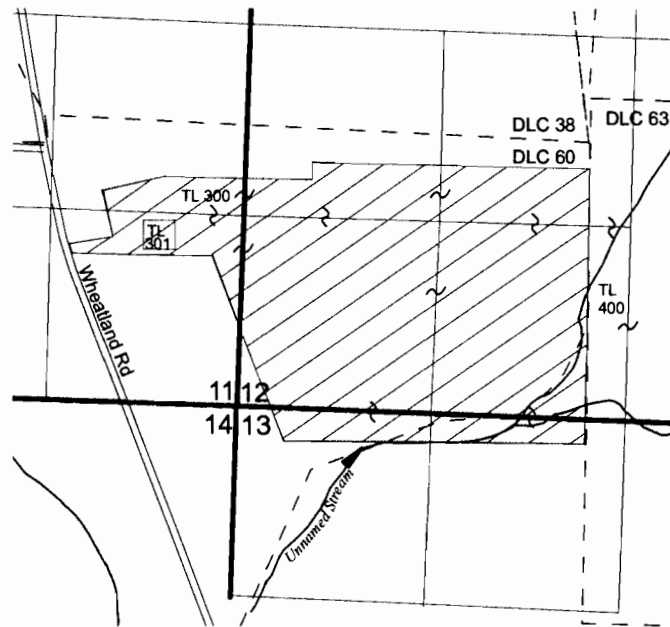
OCT 21 2009

WATER RESOURCES DEPT  
 SALEM, OREGON

FIGURE 1

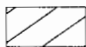
**MORSE BROS. INC.**  
 dba KNIFE RIVER, AN  
 MDU RESOURCES COMPANY

T6S, R3W, WM.  
 Sections 11, 12 and 13  
 Marion County, Oregon  
 Claim GR-670/Certificate GR-643  
 Groundwater Registration Modification  
 To Map



Portable Sump Pump will move in  
 NE SE and SE SE of Section 11,  
 SW ¼ of Section 12, and  
 NW NW and NE NW of Section 13  
 as mining occurs.

**Explanation**

 Proposed Place of Use (Industrial/Mining)

October 7, 2009

THIS MAP IS NOT INTENDED TO  
 PROVIDE LEGAL DIMENSIONS OR  
 LOCATIONS OF PROPERTY  
 OWNERSHIP LINES.

*EnviroLogic Resources, Inc.*  
 ENVIRONMENTAL WATER RESOURCES SCIENTISTS

**RECEIVED**

OCT 21 2009

WATER RESOURCES DEPT  
 SALEM, OREGON



1 inch = 1,320 feet

**FIGURE 2**

**MORSE BROS. INC.**  
 dba KNIFE RIVER, AN  
 MDU RESOURCES COMPANY