

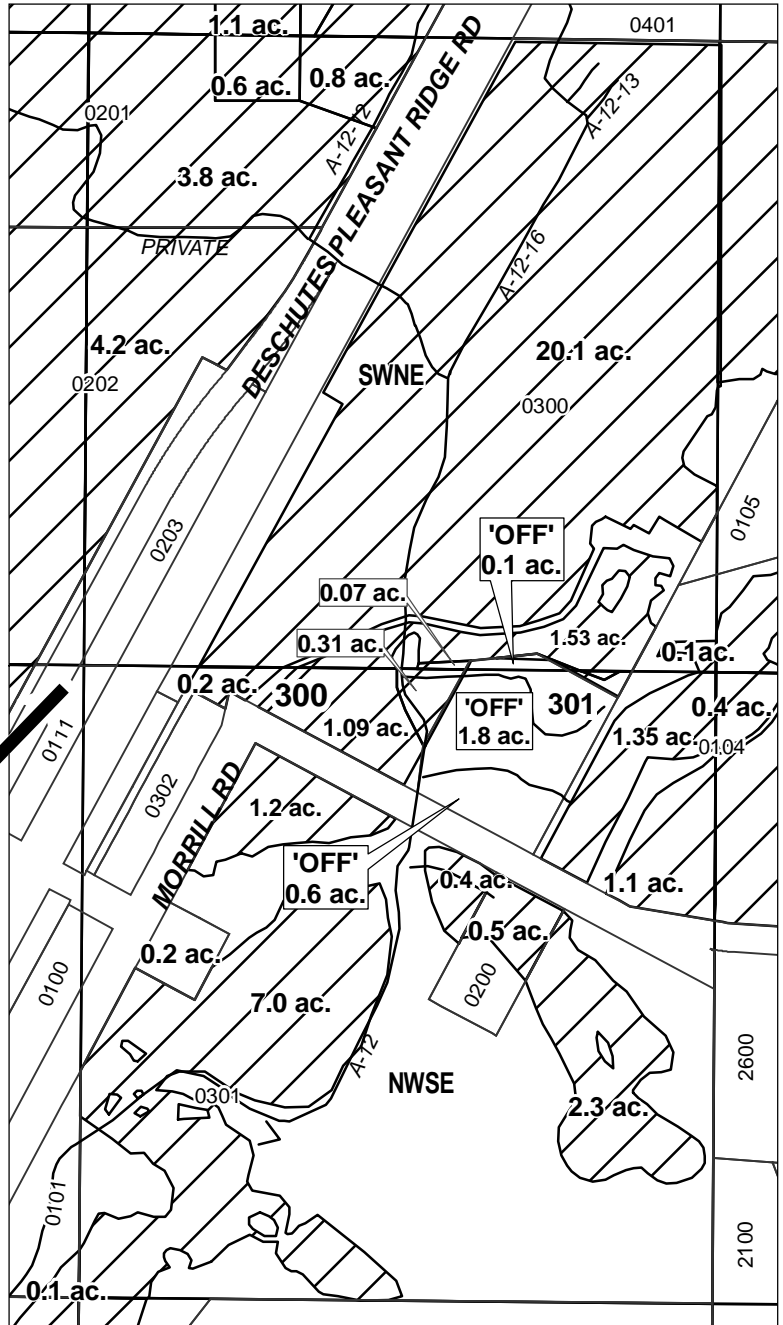
DESCHUTES COUNTY SEC.26 T16S R12E

SCALE - 1" = 400'

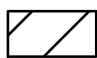
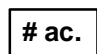

SW 1/4 OF THE NE 1/4; NW 1/4 OF THE SE 1/4

DISTRICT INTERNAL
NOTICE #: E-2008-003

C 1/4 COR



"OFF" MAP

-  EXISTING WATER RIGHTS
-  # ac. PARCELS W/ WATER RIGHTS
-  OFF LANDS



APPLICATION FOR PERMANENT INSTREAM TRANSFER
NAME: DESCHUTES RIVER CONSERVANCY

TAXLOT #: 300, 301

2.5 ACRES

DATE: 06-30-08

FILE: E:\TRANSFER\WRTRANS08\ DRC\E-2008-003\161226_300