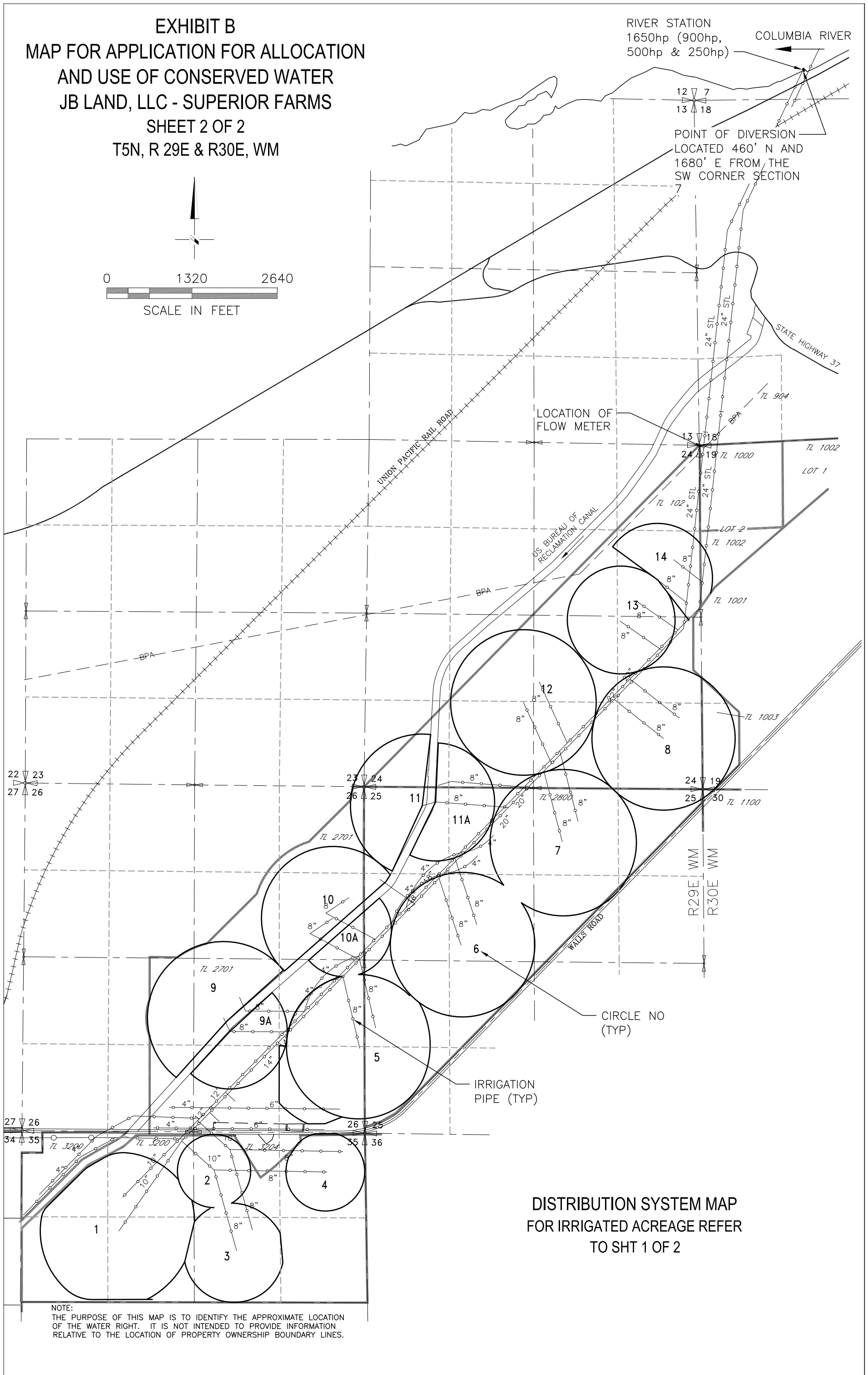
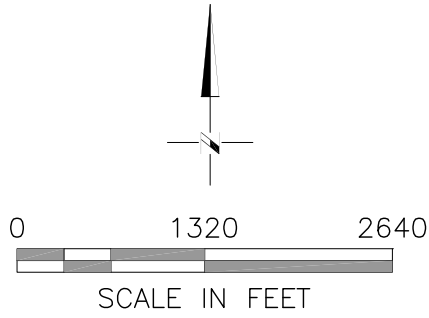


EXHIBIT B
MAP FOR APPLICATION FOR ALLOCATION
AND USE OF CONSERVED WATER
JB LAND, LLC - SUPERIOR FARMS
SHEET 2 OF 2
T5N, R 29E & R30E, WM

RIVER STATION
 1650hp (900hp,
 500hp & 250hp)

COLUMBIA RIVER

POINT OF DIVERSION
 LOCATED 460' N AND
 1680' E FROM THE
 SW CORNER SECTION



DISTRIBUTION SYSTEM MAP
FOR IRRIGATED ACREAGE REFER
TO SHT 1 OF 2

NOTE:
 THE PURPOSE OF THIS MAP IS TO IDENTIFY THE APPROXIMATE LOCATION
 OF THE WATER RIGHT. IT IS NOT INTENDED TO PROVIDE INFORMATION
 RELATIVE TO THE LOCATION OF PROPERTY OWNERSHIP BOUNDARY LINES.