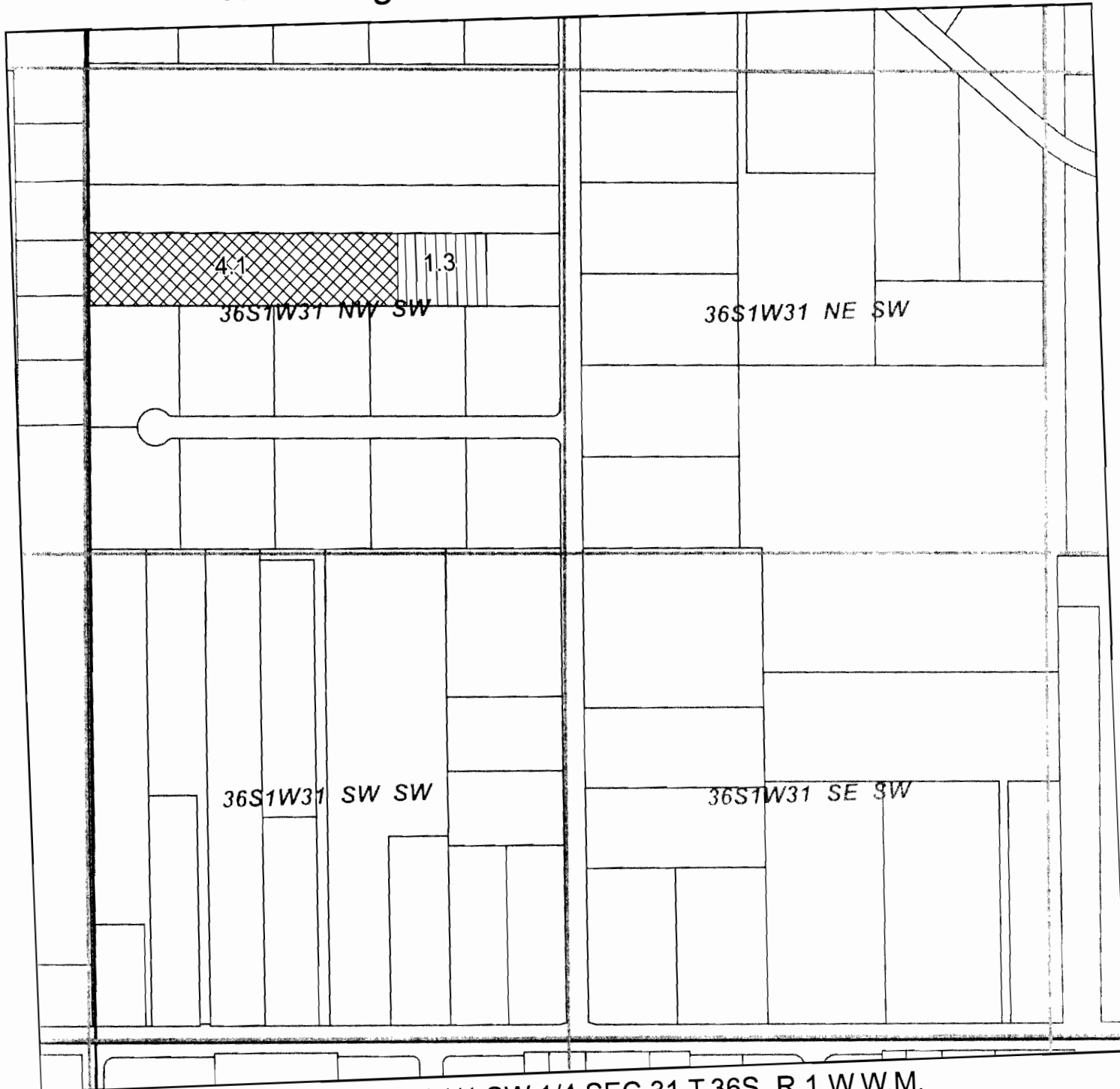


Rogue River Valley Irrigation District Water Rights Instream Transfer Map



Located in NW 1/4 SW 1/4 SEC 31 T.36S. R.1 W.W.M.
Tax Lot T36S R1W 31 C 1100 -4.1 ac

From: RRVID





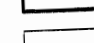
Certificates
80569
80571
80574
80576

RRVID # 09-01

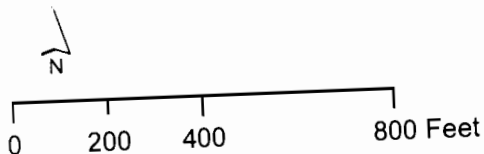
RECEIVED

DEC 17 2009

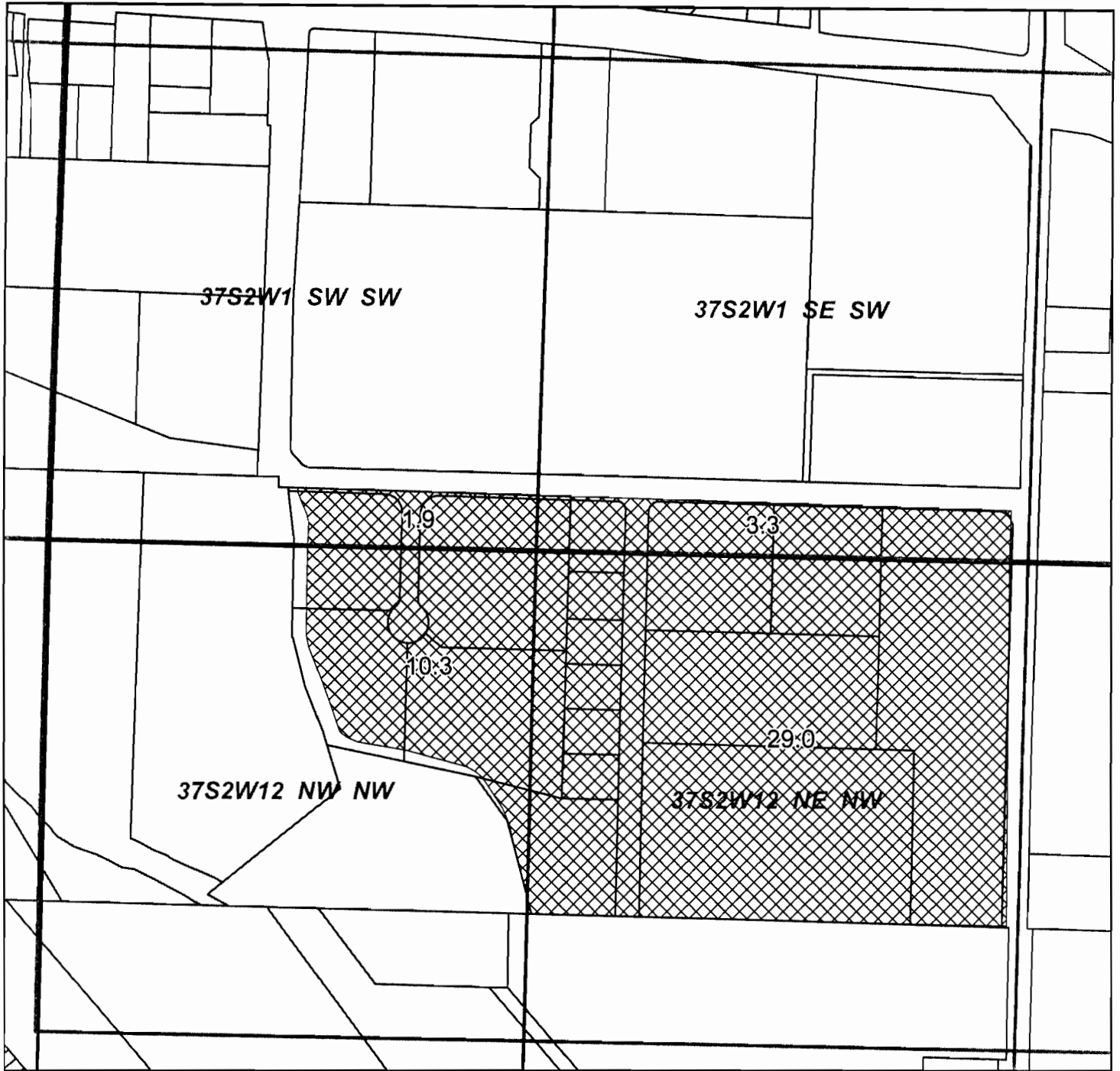
WATER RESOURCES DEPT
SALEM, OREGON

-  Transfer Off
-  Prior Transfer
-  Qtr-Qtr
-  Section Line
-  Tax Lot Line

T 10993



Rogue River Valley Irrigation District Water Rights Transfer Map



Located in N 1/2 NW 1/4 SEC 12 and S 1/2 SW 1/4 SEC 01 T.37S. R.2 W.W.M.

Tax Lot T37S R2W 12B - 44.5 ac TL 200

Tax Lot has been partitioned

From: RRVID

Certificates

80569

80571

80574

80576

RRVID #09-02

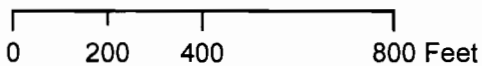
RECEIVED

DEC 17 2009

WATER RESOURCES DEPT
SALEM, OREGON

- Transfer Off
- Qtr-Qtr
- Section Line
- Tax Lot Line

T 10993



Printed March 2009

Rogue River Valley Irrigation District Water Rights Transfer Map



Located in SW 1/4 SE 1/4 SEC 35 T.36S. R.2 W.W.M.

Tax Lot T36S R2W 35D 2608 - 3.6 ac
Tax Lot T36S R2W 35D 2608 - 1.6 ac

From: RRVID

Certificates


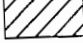

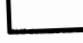

80569
80571
80574
80576

RRVID #09-02

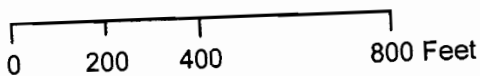
RECEIVED

DEC 17 2009

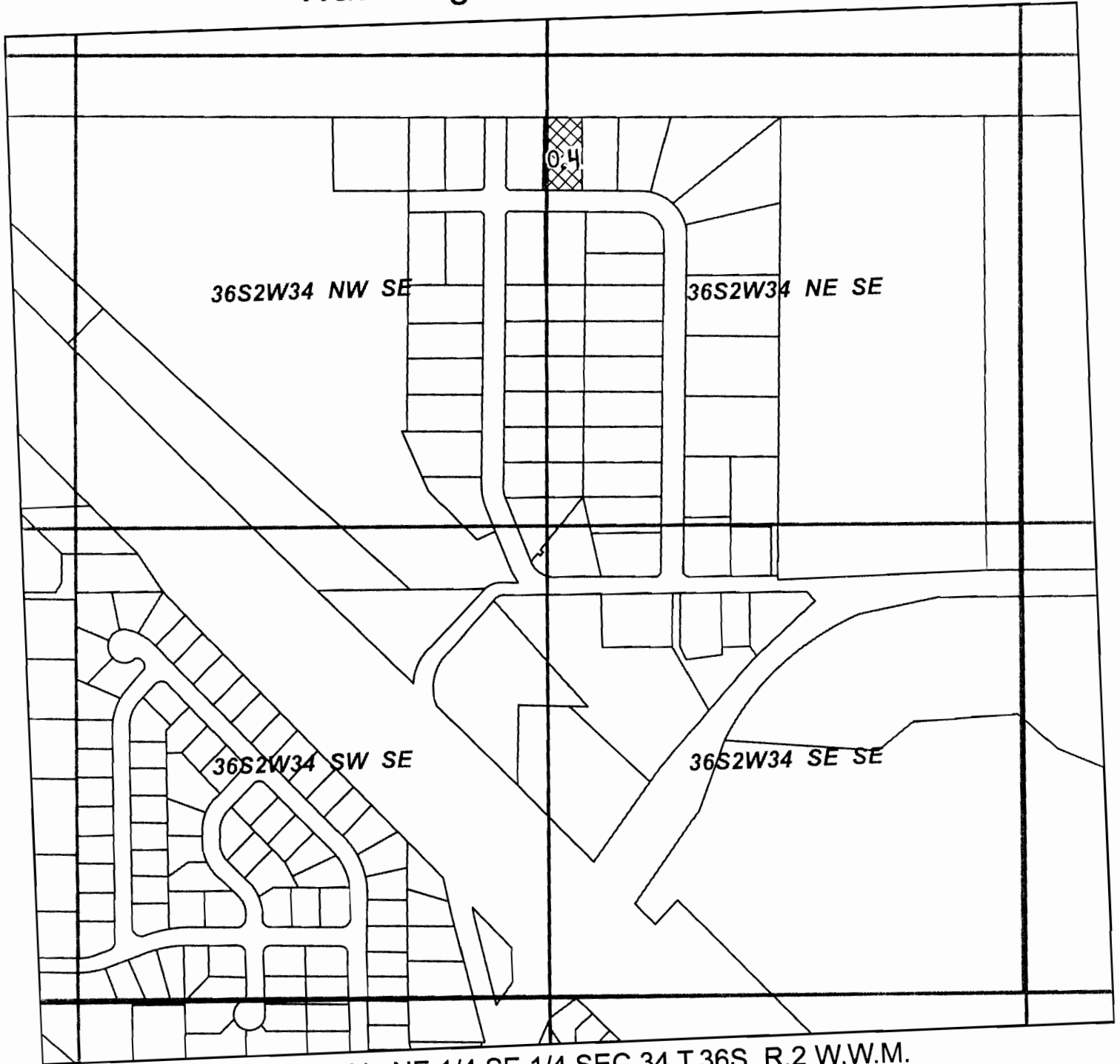
WATER RESOURCES DEPT
SALEM, OREGON

-  Transfer Off
-  Remaining
-  Qtr-Qtr
-  Section Line
-  Tax Lot Line

T 10993



Rogue River Valley Irrigation District Water Rights Transfer Map



Located in NE 1/4 SE 1/4 SEC 34 T.36S. R.2 W.W.M.

Tax Lot T36S R2W 34 D - 0.4 ac Taxlot 231

From: RRVID

Certificates

80569

80571

80574


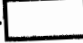


80576

RRVID #09-03

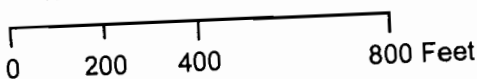
RECEIVED

DEC 17 2009

WATER RESOURCES DEPT
SALEM, OREGON

-  Transfer Off
-  Qtr-Qtr
-  Section Line
-  Tax Lot Line

T 10993



Rogue River Valley Irrigation District Water Rights Transfer Map



Located in NW 1/4 SE 1/4 SEC 35 T.36S. R.2 W.W.M.

Tax Lot T36S R2W 35D 2602 - 1.8 ac

From: RRVID

Certificates

- 80569
- 80571
- 80574
- 80576

RRVID #09-03

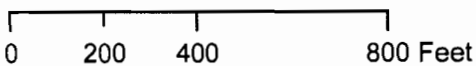
RECEIVED

DEC 17 2009

WATER RESOURCES DEPT
SALEM, OREGON

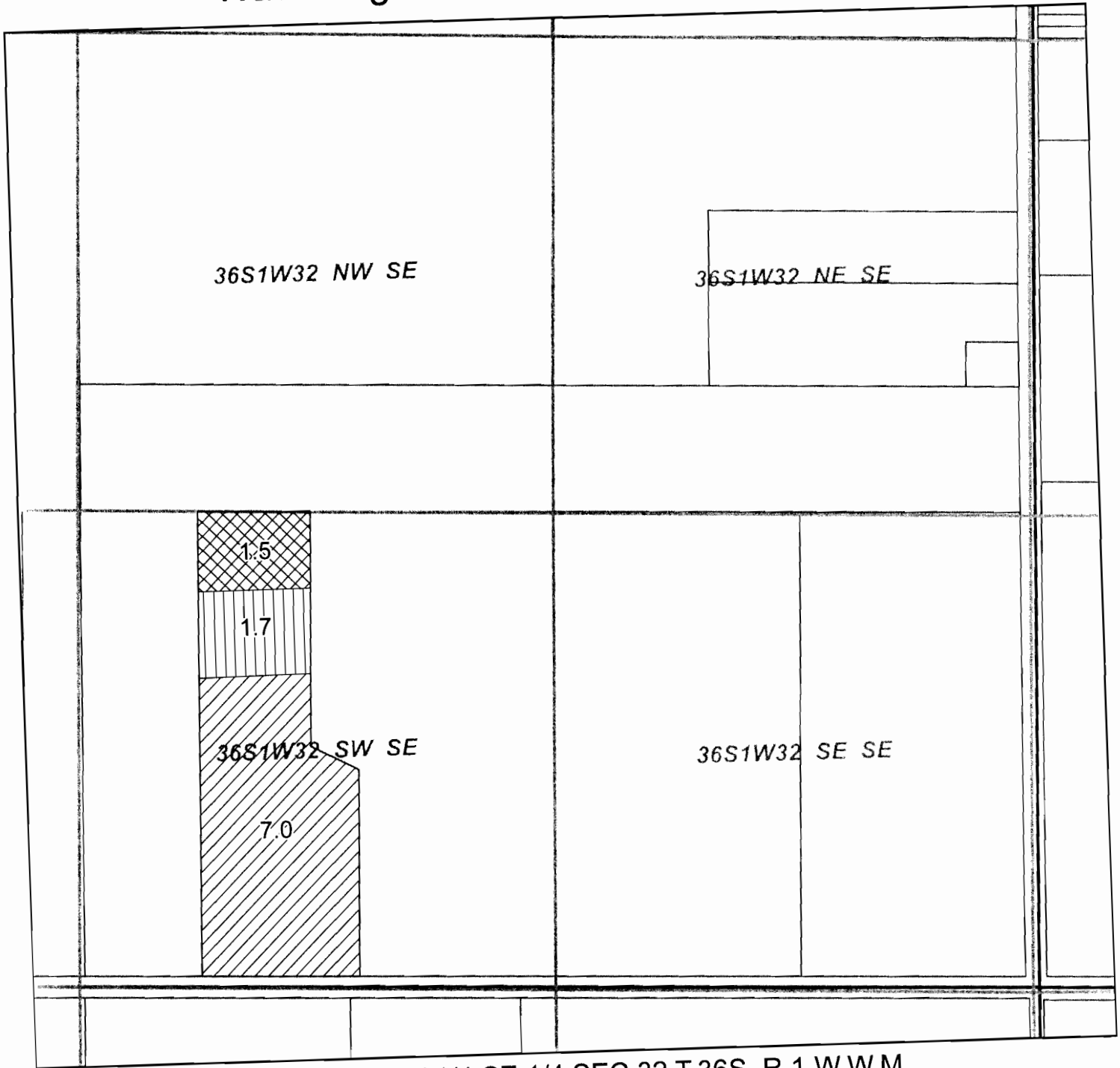
- Transfer Off
- Remaining Water Right
- Prior Transfer
- Qtr-Qtr
- Section Line
- Tax Lot Line

T 10993



Printed March 2009

Rogue River Valley Irrigation District Water Rights Instream Transfer Map



Located in SW 1/4 SE 1/4 SEC 32 T.36S. R.1 W.W.M.

Tax Lot T36S R1W 32 1300 - 1.5 ac

From: RRVID

Certificates

80569







80571

80574

80576

RRVID # 09-04

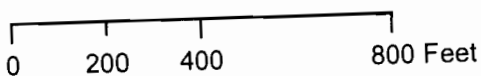
T 10993

-  Transfer Off
-  Remaining Water right
-  Prior Transfer
-  Qtr-Qtr
-  Section Line
-  Tax Lot Line

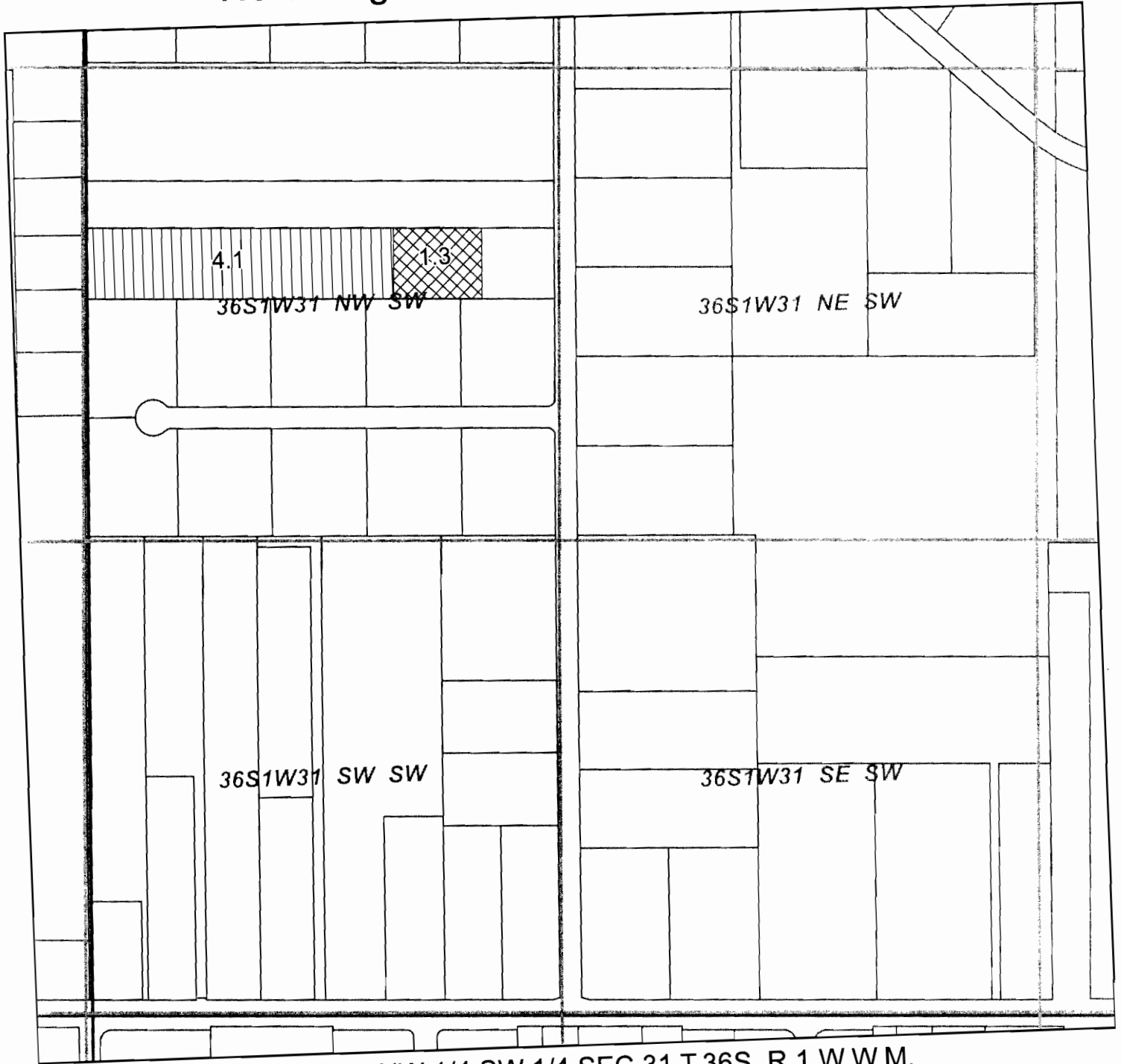
RECEIVED

DEC 17 2009

WATER RESOURCES DEPT



Rogue River Valley Irrigation District Water Rights Instream Transfer Map



Located in NW 1/4 SW 1/4 SEC 31 T.36S. R.1 W.W.M.
Tax Lot T36S R1W 31 C 1100 - 1.3 ac

From: RRVID

Certificates

80569

80571

80574

80576 (will cancel)






RRVID # 09-05

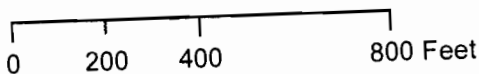
RECEIVED

DEC 17 2009

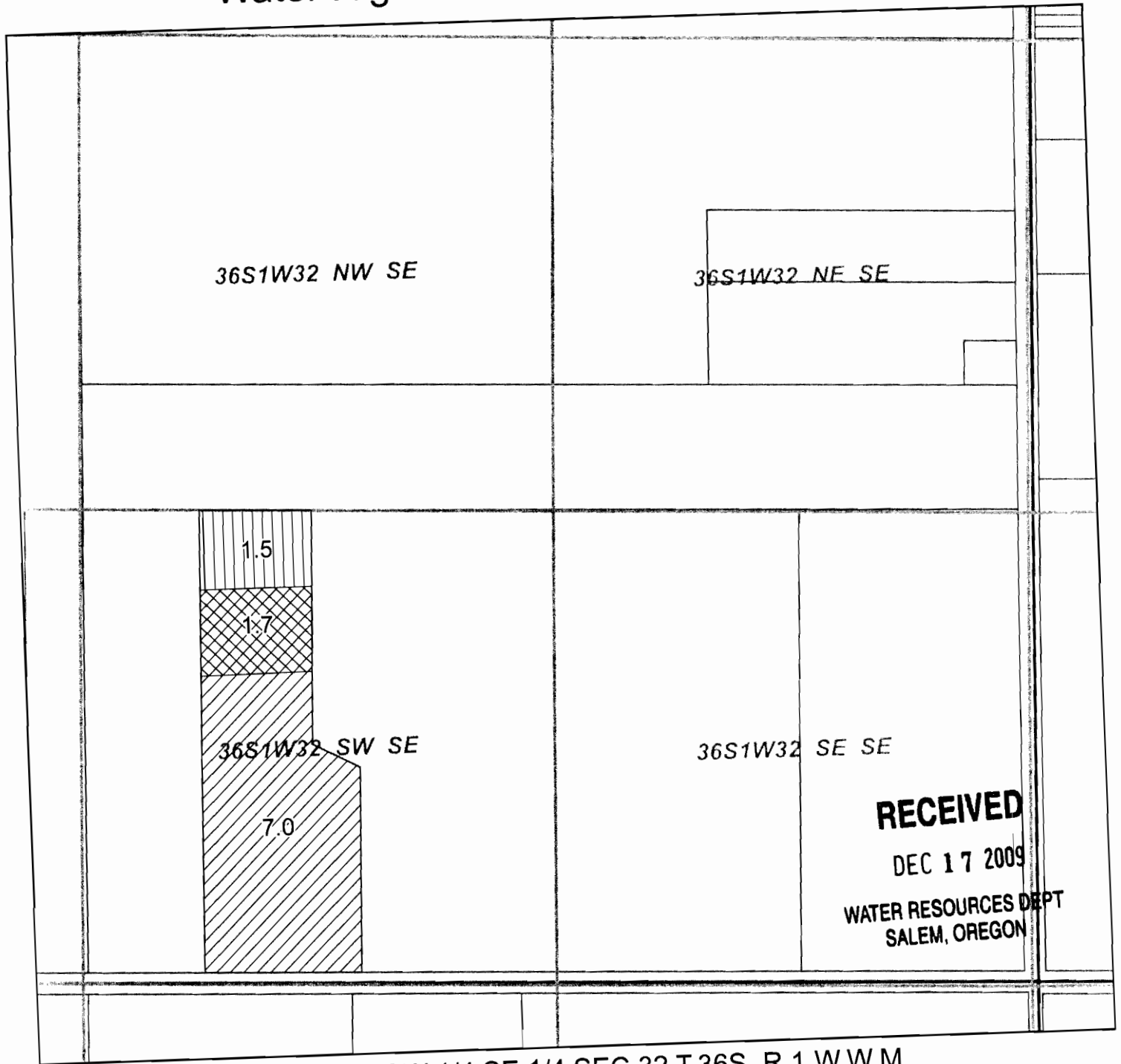
WATER RESOURCES DEPT
SALEM, OREGON

T 10993

-  Transfer Off
-  Prior Transfer
-  Qtr-Qtr
-  Section Line
-  Tax Lot Line



Rogue River Valley Irrigation District Water Rights Instream Transfer Map



Located in SW 1/4 SE 1/4 SEC 32 T.36S. R.1 W.W.M.


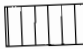
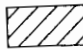

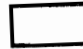

Tax Lot T36S R1W 32 1300 - 1.7 ac

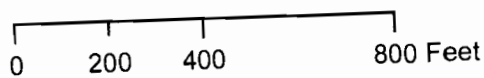
From: RRVID

Certificates
80569
80571
80574
80576 (will cancel)

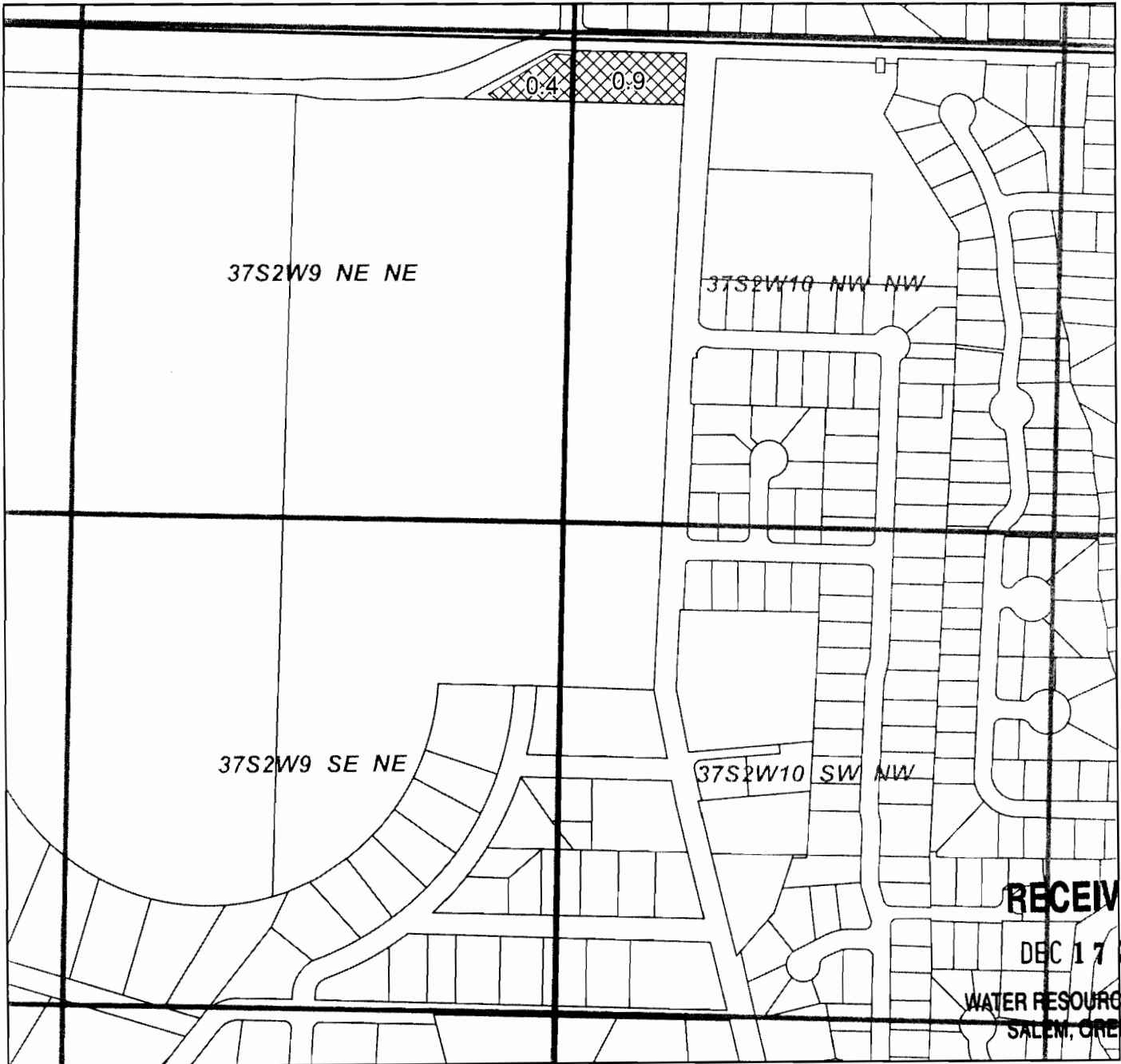
RRVID # 09-05

T 10993

-  Transfer Off
-  Prior Transfer
-  Remaining Water right
-  Qtr-Qtr
-  Section Line
-  Tax Lot Line



Rogue River Valley Irrigation District Water Rights Transfer Map



RECEIVED

DEC 17 2009

WATER RESOURCES DEPT
SALEM, OREGON

Located in NE 1/4 NE 1/4; NW 1/4 NW 1/4 SEC.10 T.37S. R.2 W.W.M.

Tax Lot 37S R2W 10 BB 400 - 1.3 ac





From: RRVID

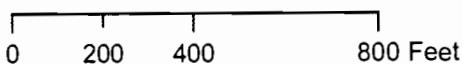
Certificates

- 80569
- 80571
- 80574
- 80575
- 80576
- 80577
- 83729

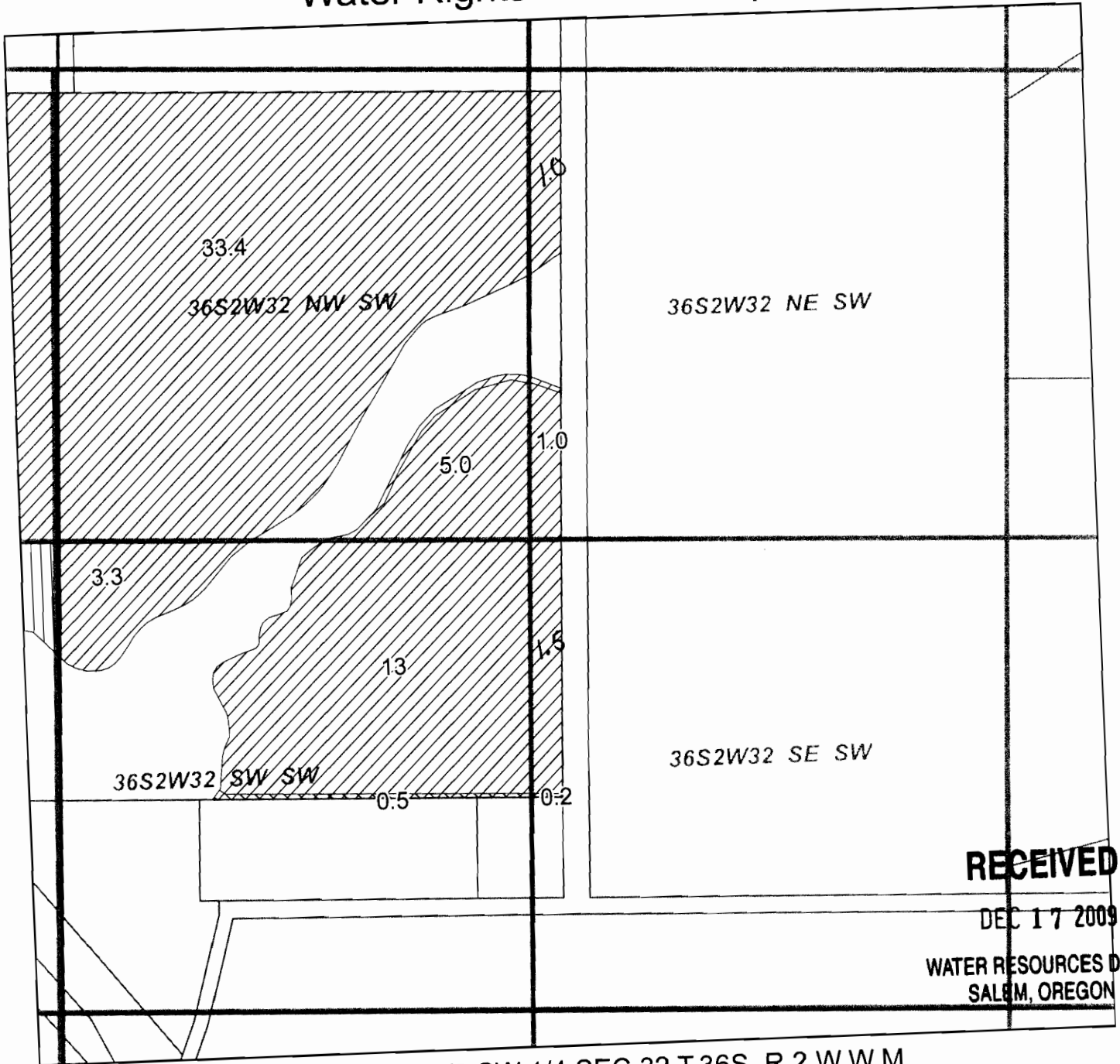
RRVID #09-06

T 10993

-  Transfer Off
-  Section Line
-  Qtr-Qtr
-  Tax Lot Line



Rogue River Valley Irrigation District Water Rights Transfer Map



RECEIVED

DEC 17 2009

WATER RESOURCES DEPT
SALEM, OREGON

Located in S 1/2 SW 1/4 SEC.32 T.36S. R.2 W.W.M.

Tax Lot 36S R2W 32 1500 - 0.7 ac

From: RRVID

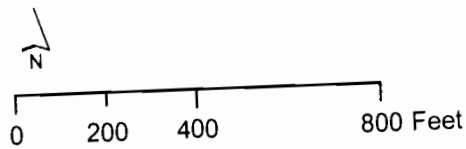
Certificates

- 80569
- 80571
- 80574
- 80575
- 80576
- 80577
- 83729

RRVID #09-06

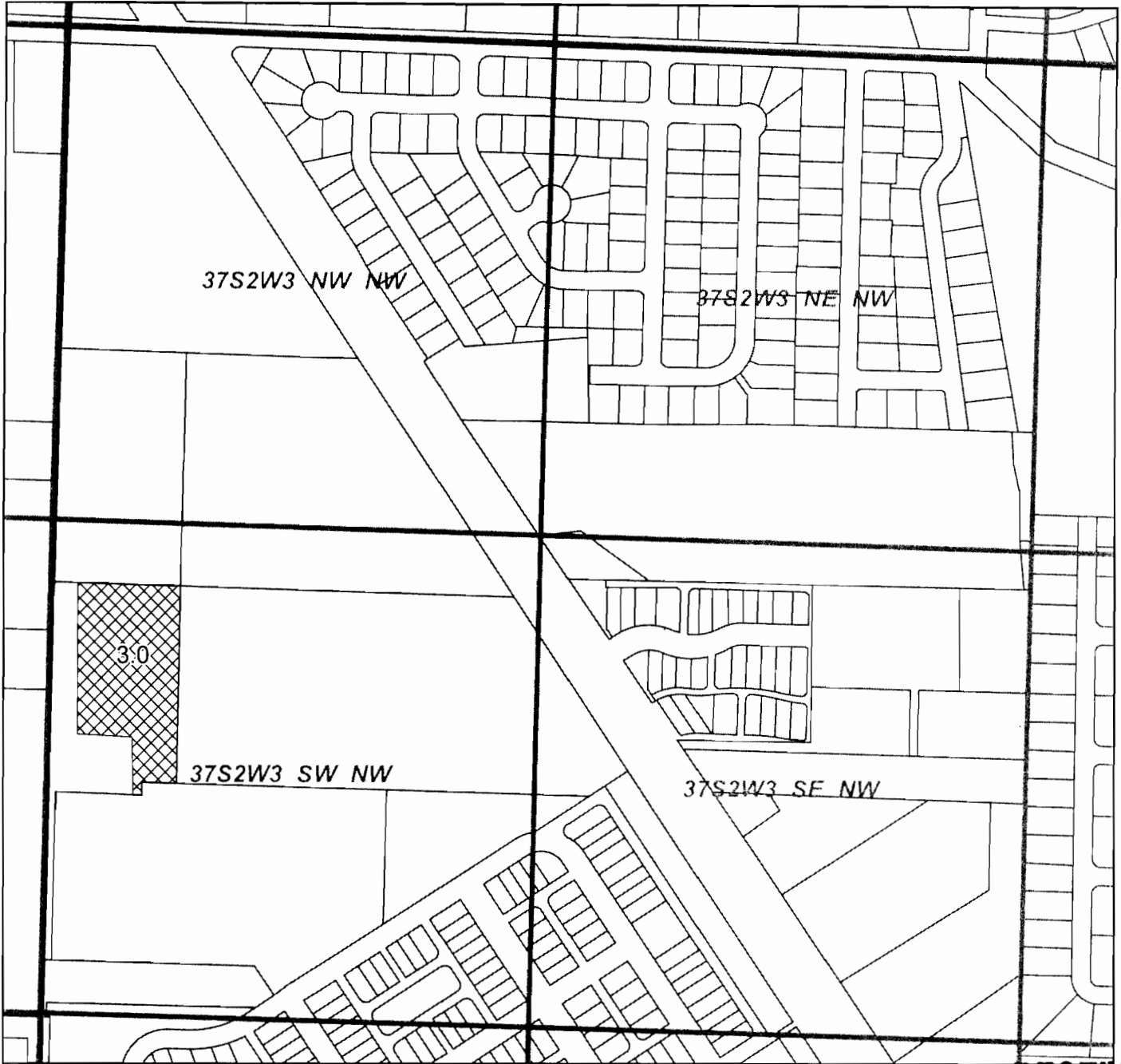
T 10993

- Transfer Off
- Prior Transfer
- Remaining
- Section Line
- Qtr-Qtr
- Tax Lot Line



Printed November 2009

Rogue River Valley Irrigation District Water Rights Transfer Map



Located in SW 1/4 NW 1/4 SEC.03 T.37S. R.2 W.W.M.

Tax Lot 37S R2W 03 B 1600 - 3.0 ac

From: RRVID

Certificates

- 80569
- 80571
- 80574
- 80575
- 80576
- 80577
- 83729

RRVID #09-07

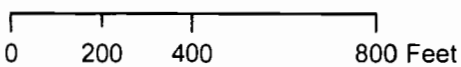
RECEIVED

DEC 17 2009

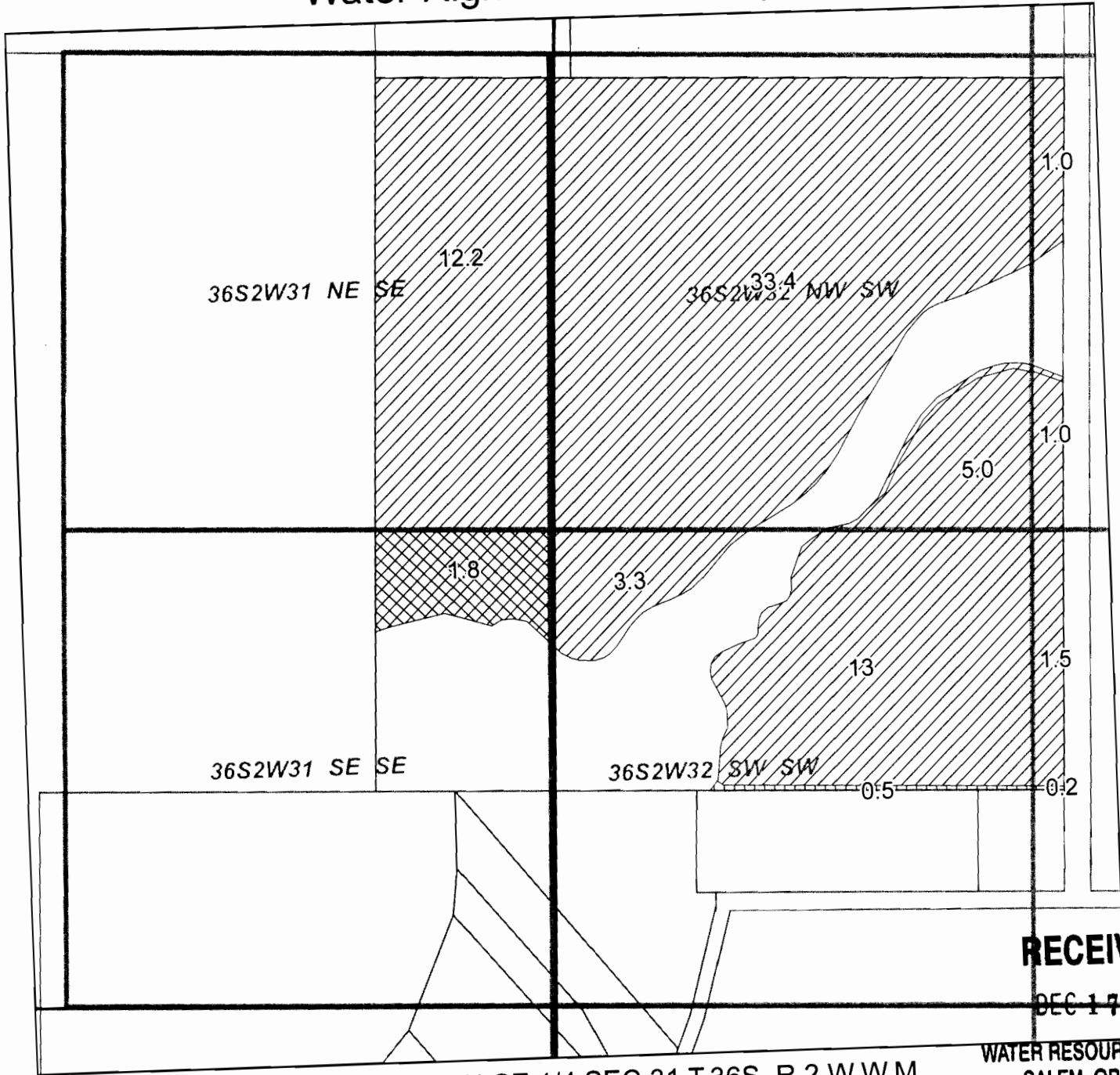
WATER RESOURCES DEPT
SALEM, OREGON

T 10993

- Transfer Off
- Section Line
- Qtr-Qtr
- Tax Lot Line



Rogue River Valley Irrigation District Water Rights Transfer Map



RECEIVED

DEC 17 2009





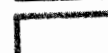

WATER RESOURCES DEPT
SALEM, OREGON

Located in SE 1/4 SE 1/4 SEC.31 T.36S. R.2 W.W.M.

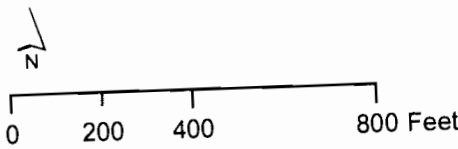
Tax Lot 36S R2W 32 1500 - 1.8 ac

From: RRVID

- Certificates
 80569
 80571
 80574
 80575
 80576
 80577
 83729
 RRVID #09-08

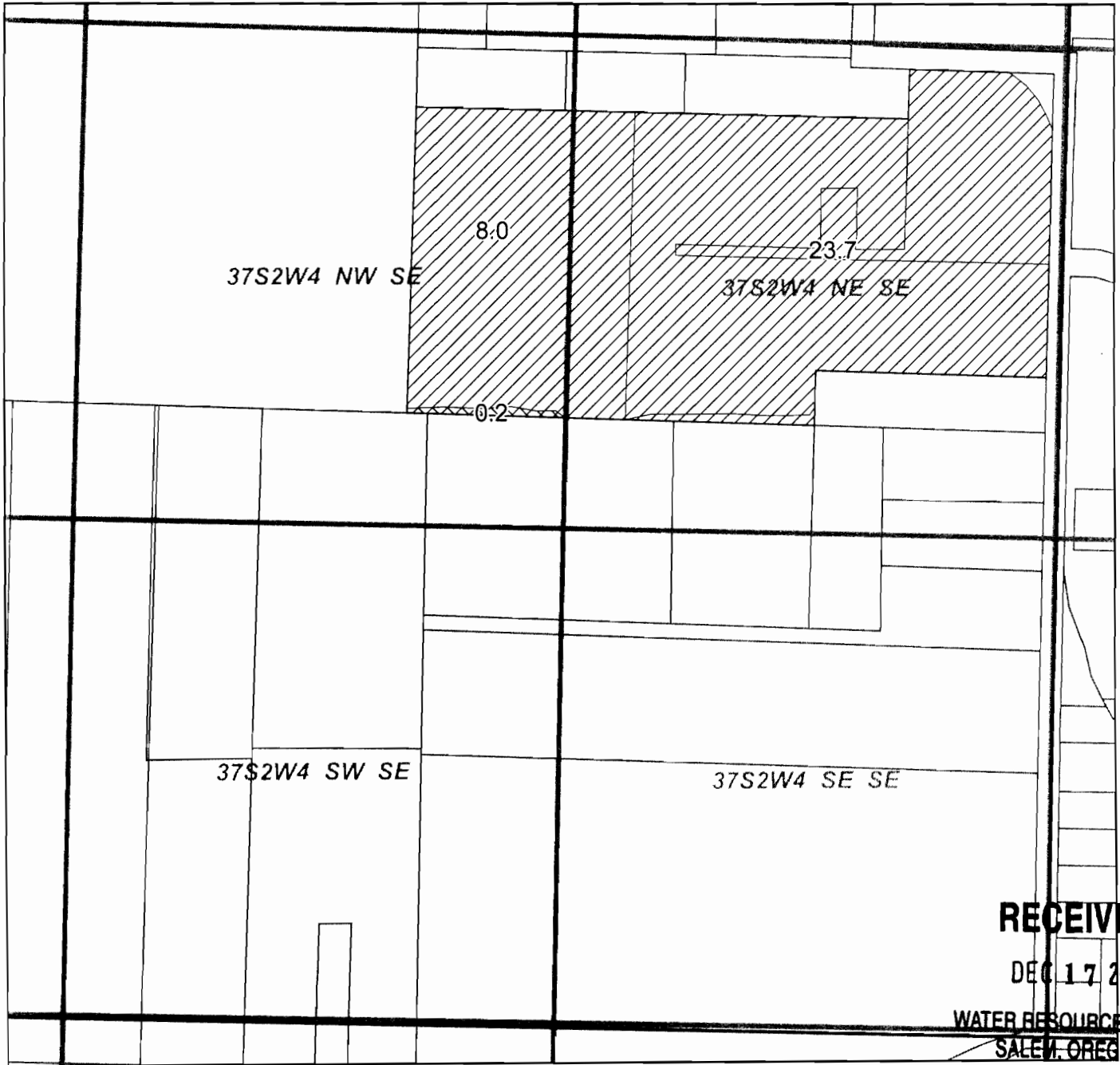
-  Transfer Off
-  Prior Transfer
-  Remaining
-  Section Line
-  Qtr-Qtr
-  Tax Lot Line

T 10993



Printed November 2009

Rogue River Valley Irrigation District Water Rights Transfer Map



Located in NW 1/4 SE 1/4 SEC.04 T.37S. R.2 W.W.M.

Tax Lot 37S R2W 04 2900 - 0.2 ac

From: RRVID

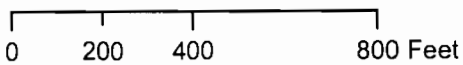
Certificates

- 80569
- 80571
- 80574
- 80575
- 80576
- 80577
- 83729

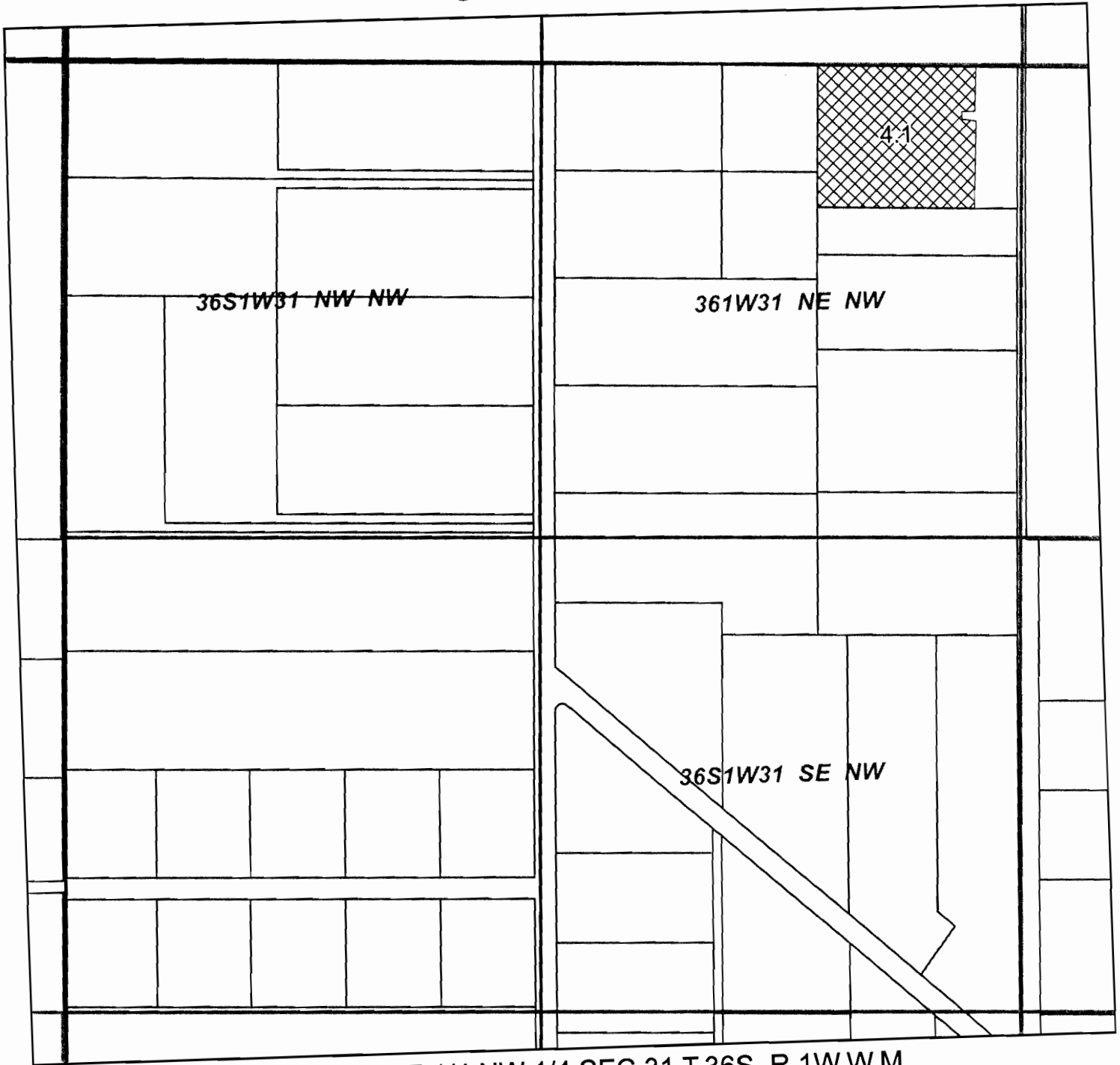
RRVID #09-08

T 10993

- Transfer Off
- Remaining
- Section Line
- Qtr-Qtr
- Tax Lot Line



Rogue River Valley Irrigation District Water Rights Transfer Map



Located in NE 1/4 NW 1/4 SEC 31 T.36S. R.1W.W.M.

Tax Lot T36S R1W 31B 100- 4.1 ac

To: David and Teri Arrasmith

Certificates

80569

80571

80574

80576

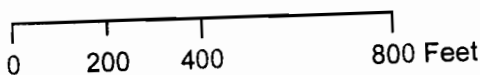
RRVID #09-01

RECEIVED



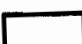
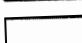
DEC 17 2009

WATER RESOURCES DEPT
SALEM, OREGON

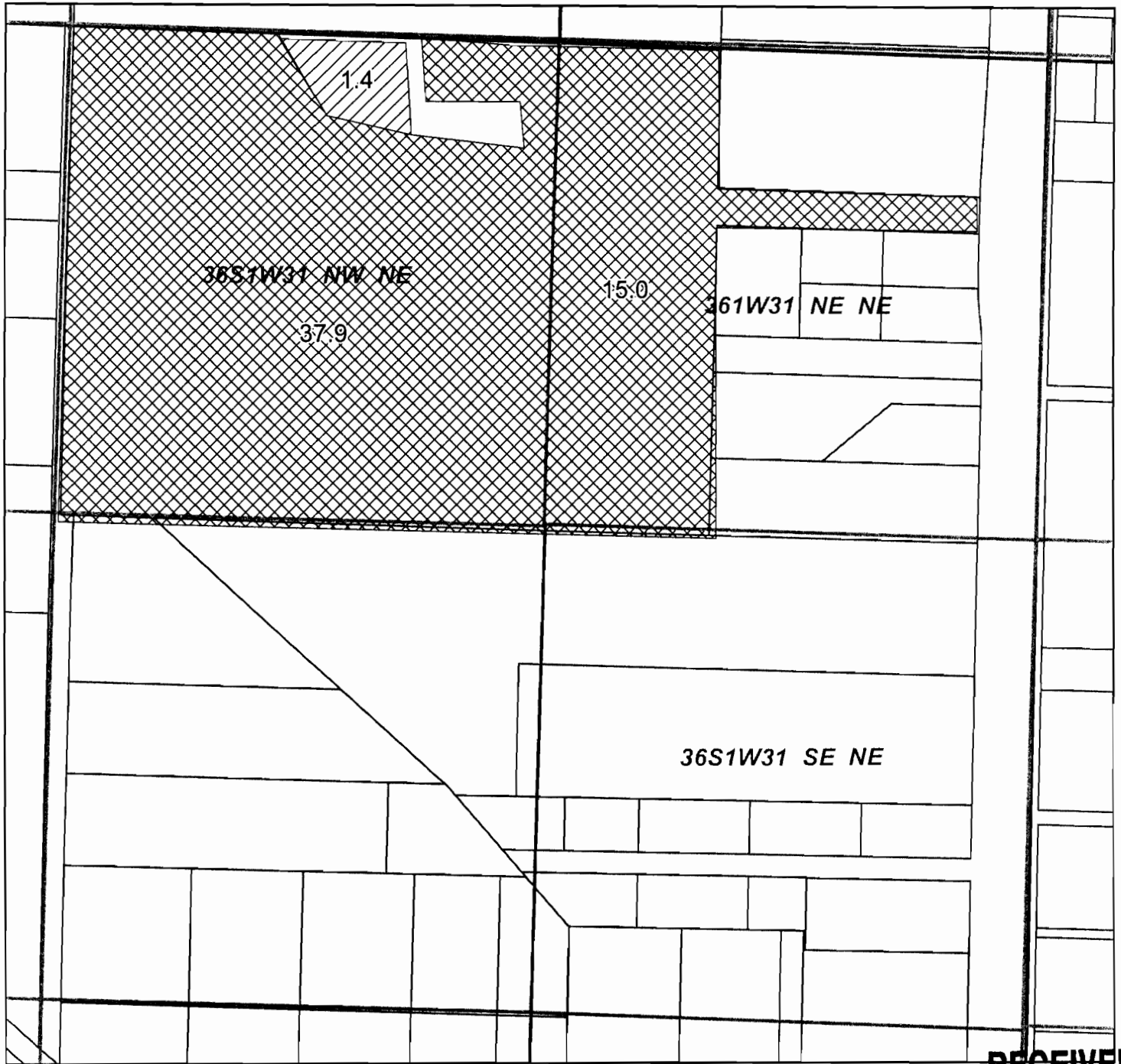
T 10993



Printed March 2009

-  Transfer On
-  Qtr-Qtr
-  Section Line
-  Tax Lot Line

Rogue River Valley Irrigation District Water Rights Transfer Map



Located in N 1/2 NE 1/4 SEC 31 T.36S. R.1W.W.M.

Tax Lot T36S R1W 31A 200 - 52.9 ac

To: Kent and Terrie Gutches

Certificates

80569

80571

80574

80576





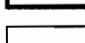
RRVID #09-02

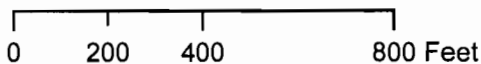
RECEIVED

DEC 17 2009

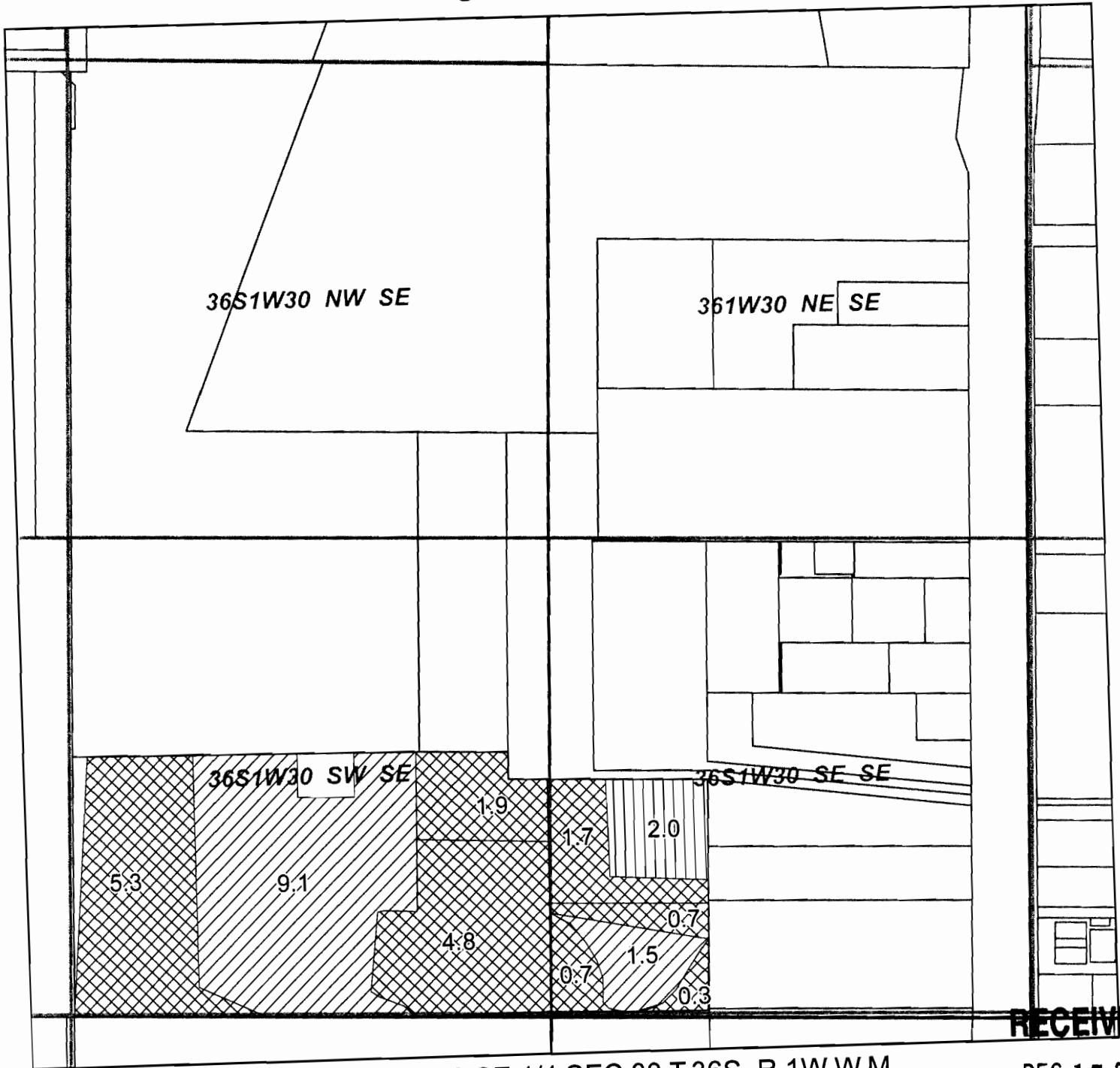
WATER RESOURCES DEPT
SALEM, OREGON

T 10993

-  Transfer On
-  Existing Water Right
-  Qtr-Qtr
-  Section Line
-  Tax Lot Line



Rogue River Valley Irrigation District Water Rights Transfer Map



RECEIVED

Located in S 1/2 SE 1/4 SEC 30 T.36S. R.1W.W.M.

DEC 17 2009






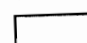
Tax Lot T36S R1W 30D 2900 - 15.4 ac

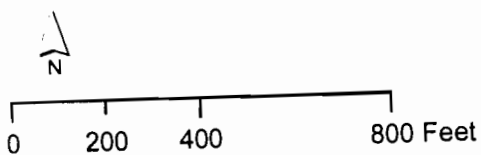
To: Kent and Terrie Gutches

WATER RESOURCES DEPT
SALEM, OREGON

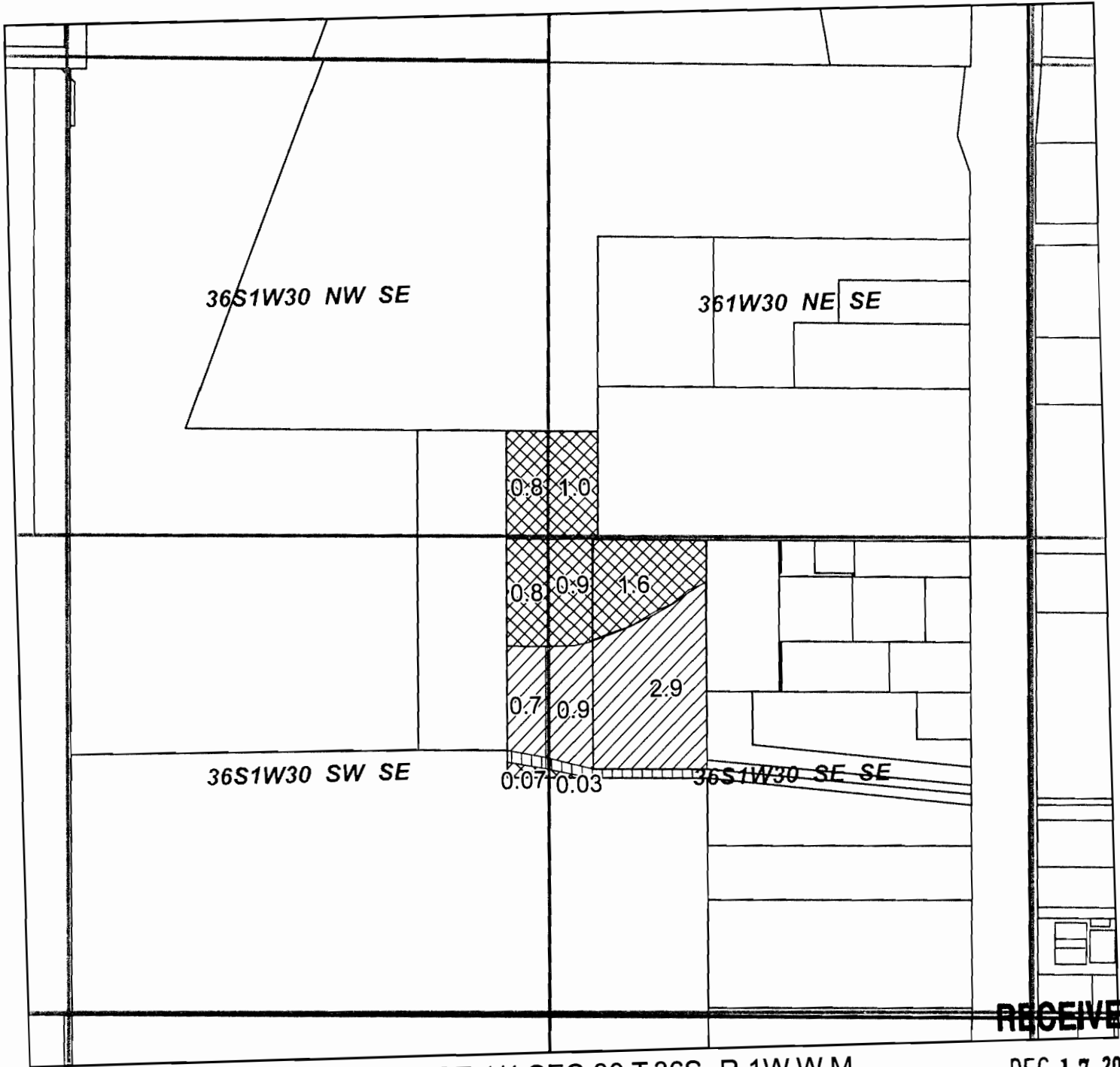
T 10993

Certificates
80569
80571
80574
80576
RRVID #09-02

-  Transfer On
-  Existing Water Right
-  Prior Transfer Off
-  Qtr-Qtr
-  Section Line
-  Tax Lot Line



Rogue River Valley Irrigation District Water Rights Transfer Map



Located in SE 1/4 SEC 30 T.36S. R.1W.W.M.

RECEIVED

DEC 17 2009

Tax Lot T36S R1W 30D 1300 - 1.6 ac
Tax Lot T36S R1W 30D 700 - 3.6 ac

WATER RESOURCES DEPT
SALEM, OREGON

To: Kent and Terrie Gutches

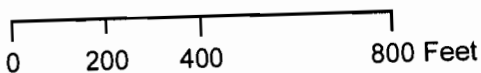
Certificates

80569
80571
80574
80576

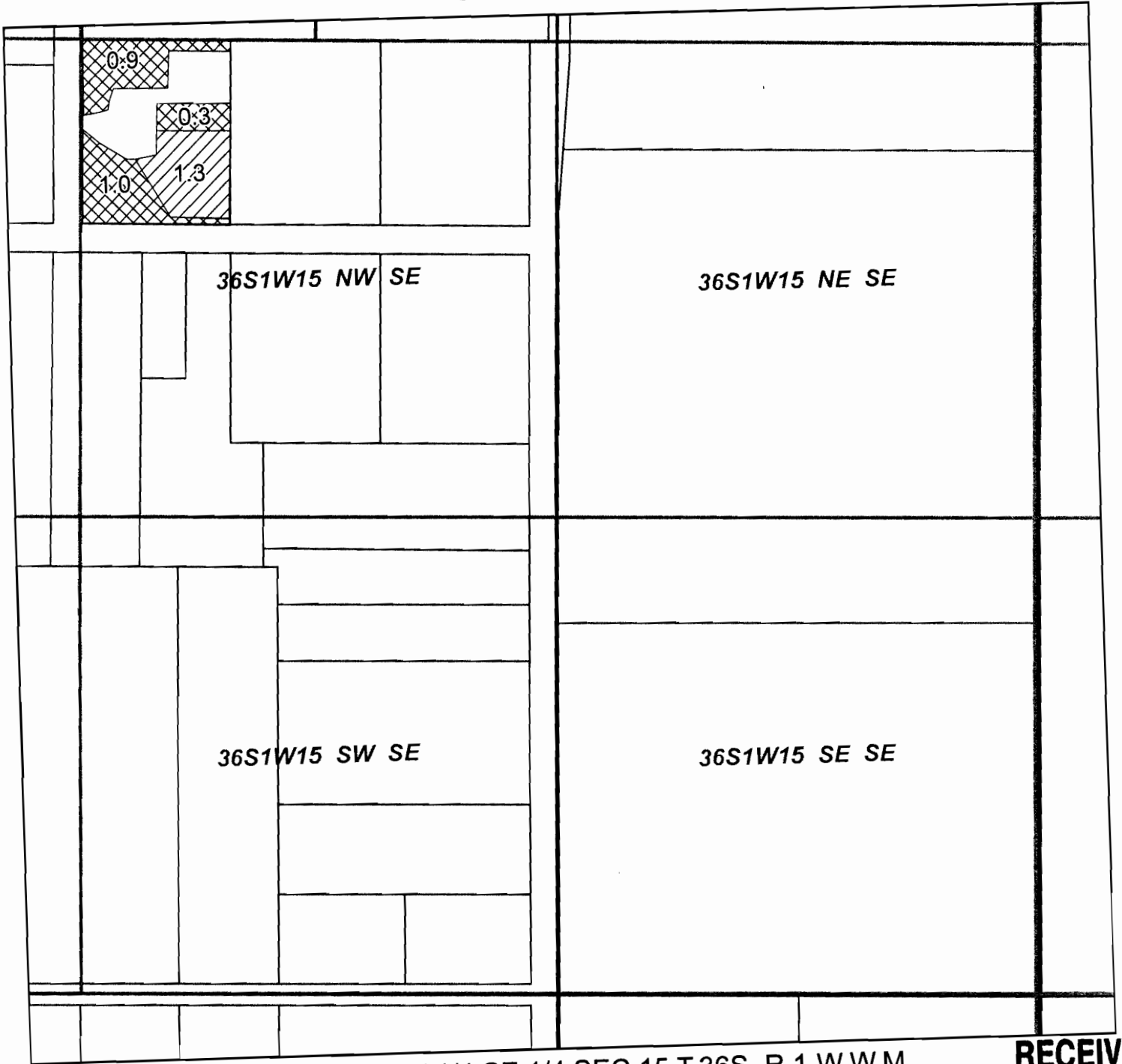
RRVID #09-02

- Transfer On
- Exsiting Water Right
- Prior Transfer Off
- Qtr-Qtr
- Section Line
- Tax Lot Line

T 10993



Rogue River Valley Irrigation District Water Rights Transfer Map



Located in NW 1/4 SE 1/4 SEC 15 T.36S. R.1 W.W.M.

Tax Lot T36S R1W 15 402 - 2.2 ac

To: Gary and LaDonna Guill Family Trust

Certificates

80569

80571

80574

80576

RRVID #09-03

RECEIVED

DEC 17 2009

WATER RESOURCES DEPT
SALEM, OREGON

T 10993



0 200 400 800 Feet

Rogue River Valley Irrigation District Water Rights Transfer Map



Located in NE 1/4 NE 1/4 SEC.29 T.36S. R.1 W.W.M.

Tax Lot 36S R1W 29A 206 - 1.5 AC

To: *Kathleen Mitchell*

Certificates

80569

80571

80574

80576

RRVID #09-04

RECEIVED

DEC 17 2009

WATER RESOURCES DEPT
SALEM, OREGON

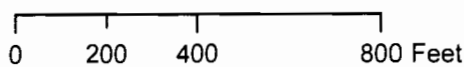
T 10993

Transfer On

Section Line

Qtr-Qtr

Tax Lot Line



Printed June 2009

Rogue River Valley Irrigation District Water Rights Transfer Map



Located in NE 1/4 SE 1/4 SEC.24 T.36S. R.1 W.W.M.

Tax Lot 36S R1W 24 1000 - 3.0 ac
TO: Sabastian and Yesenia Zepeda

Certificates
80569
80571
80574
80576 (will cancel)
RRVID #09-05

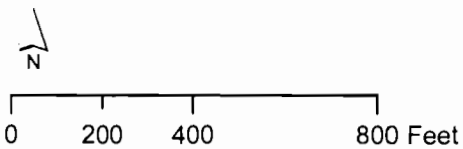
RECEIVED

DEC 17 2009

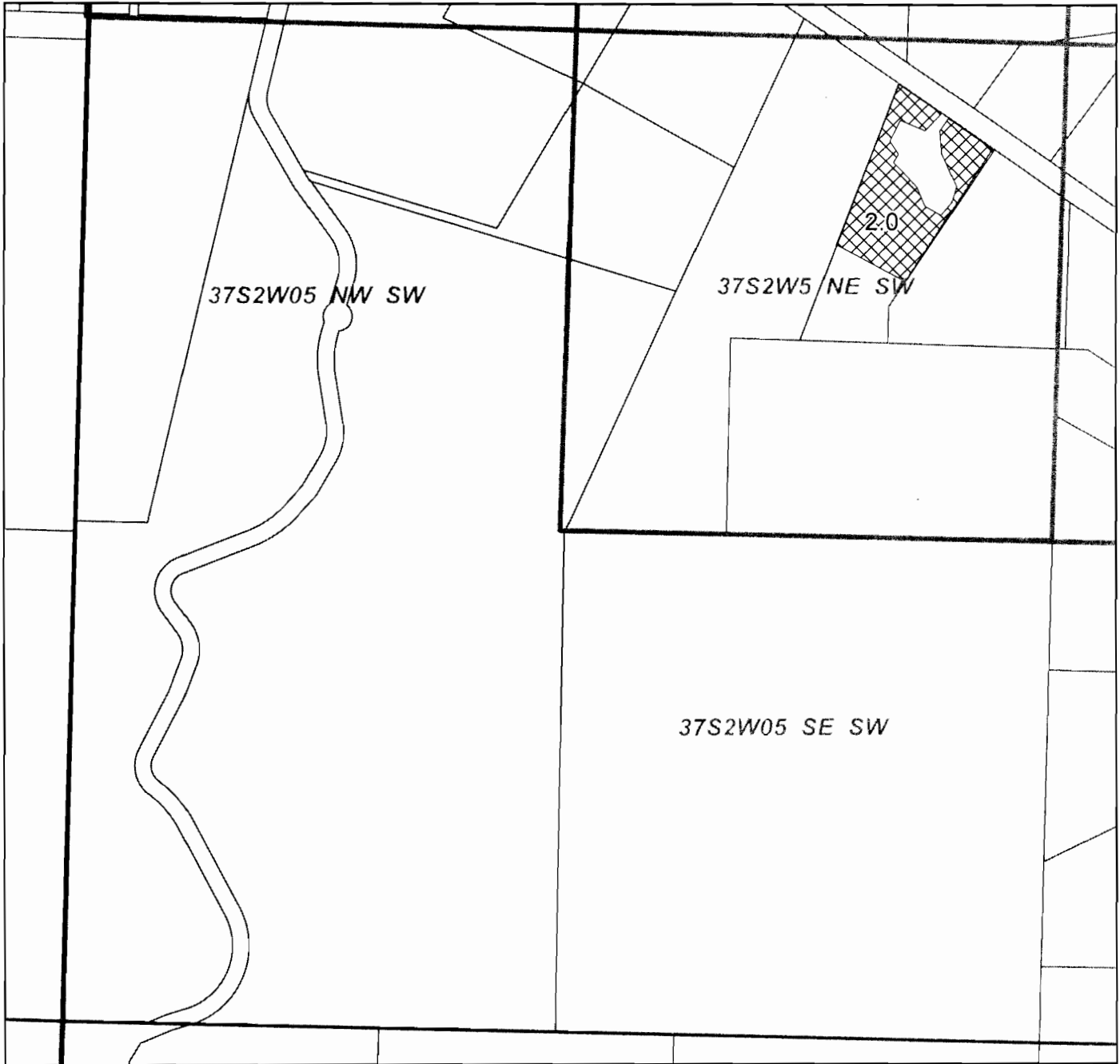
WATER RESOURCES DEPT
SALEM, OREGON

T 10993

- Transfer On
- Section Line
- Qtr-Qtr
- Tax Lot Line



Rogue River Valley Irrigation District Water Rights Transfer Map



Located in NE 1/4 SW 1/4 SEC.05 T.37S. R.2 W.W.M.

Tax Lot 37S R2W 05 1000 - 2.0 ac

TO: Jacob and Sherrie Rockwell

Certificates

- 80569
- 80571
- 80574
- 80575
- 80576
- 80577
- 83729





RRVID #09-06

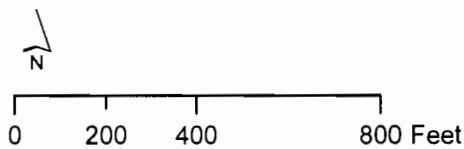
T 10993

RECEIVED

DEC 17 2009

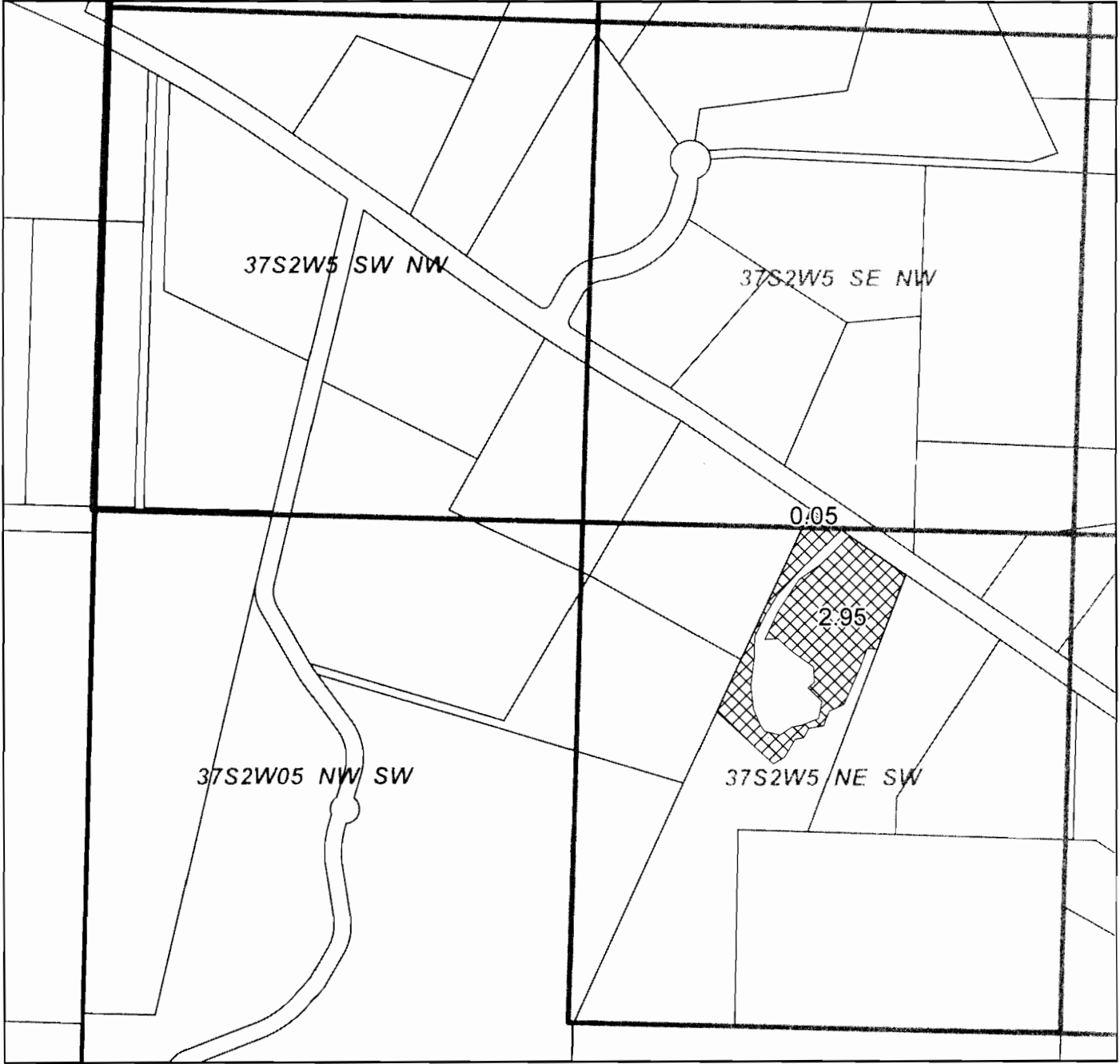
WATER RESOURCES DEPT
SALEM, OREGON

-  Transfer On
-  Section Line
-  Qtr-Qtr
-  Tax Lot Line



Printed November 2009

Rogue River Valley Irrigation District Water Rights Transfer Map



Located in NE 1/4 SW 1/4; SE 1/4 NW 1/4 SEC.05 T.37S. R.2 W.W.M.

Tax Lot 37S R2W 05 607 - 3.0 ac
TO: Jim and Jodi Salyer

- Certificates
 80569
 80571
 80574
 80575
 80576
 80577
 83729

RRVID #09-07

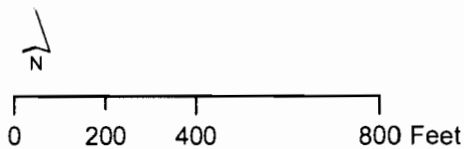
RECEIVED

DEC 17 2009

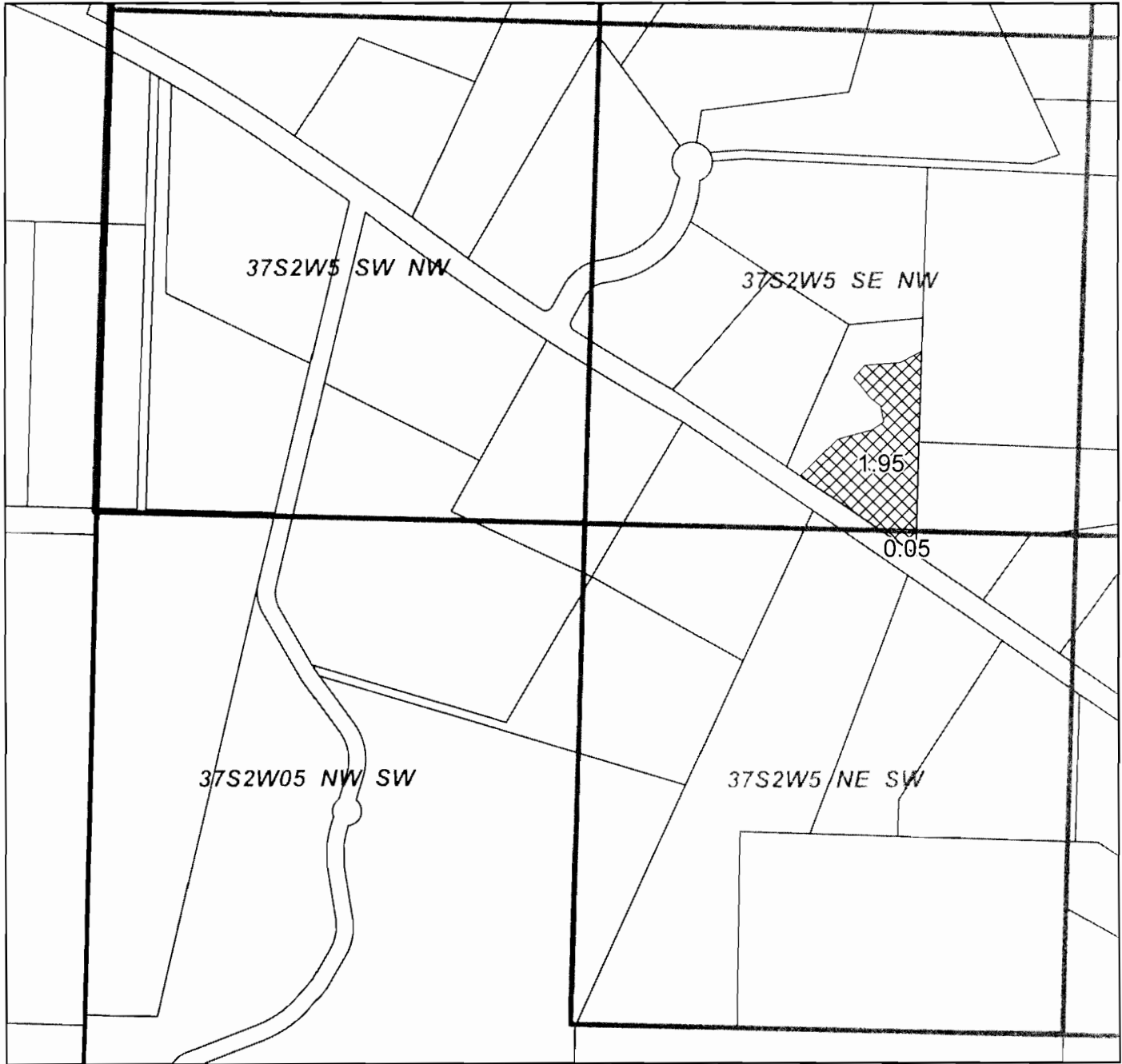
WATER RESOURCES DEPT
SALEM OREGON

- Transfer On
- Section Line
- Qtr-Qtr
- Tax Lot Line

T 10993



Rogue River Valley Irrigation District Water Rights Transfer Map



Located in NE 1/4 SW 1/4; SE 1/4 NW 1/4 SEC.05 T.37S. R.2 W.W.M.

Tax Lot 37S R2W 05 603 - 2.0 ac

TO: James Oh

Certificates

80569

80571

80574

80575

80576

80577

83729

RRVID #09-08

RECEIVED

DEC 17 2009

WATER RESOURCES DEPT
SALEM, OREGON



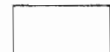
Transfer On



Section Line

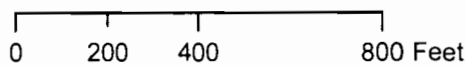


Qtr-Qtr



Tax Lot Line

T 10993



Printed November 2009