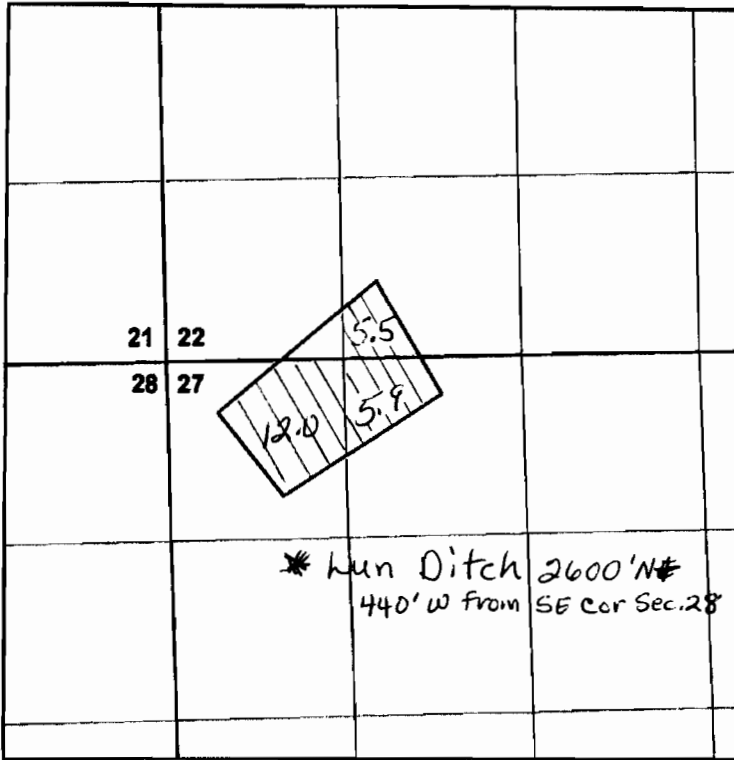


"From" Lands

T. 6S, R. 39E, WM
Sect. 22 TL # 3900



Scale: 1" = 1320'



CERTIFICATE #79534
Break Down = 23.4 AC.
SESW 5.5 Sect. 22
NENW 5.9 Sect 27
NWNW 12.0 Sect. 27

Total 23.4 ac.

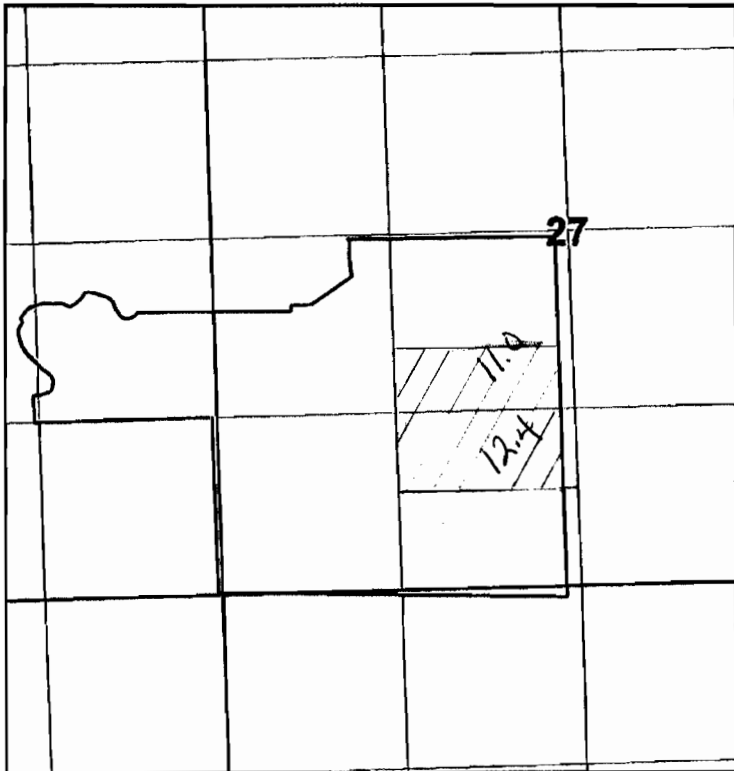
T 11006

RECEIVED

JAN 14 2010

WATER RESOURCES DEPT
SALEM, OREGON

T. 6S, R. 39E, WM
TL #2200



Cert. #1493

Break Down
NESW 11.0 acres Sec. 27 6S 39E
SESW 12.4 acres Sec 27

Total 23.4 ac

POD Authorized Locations

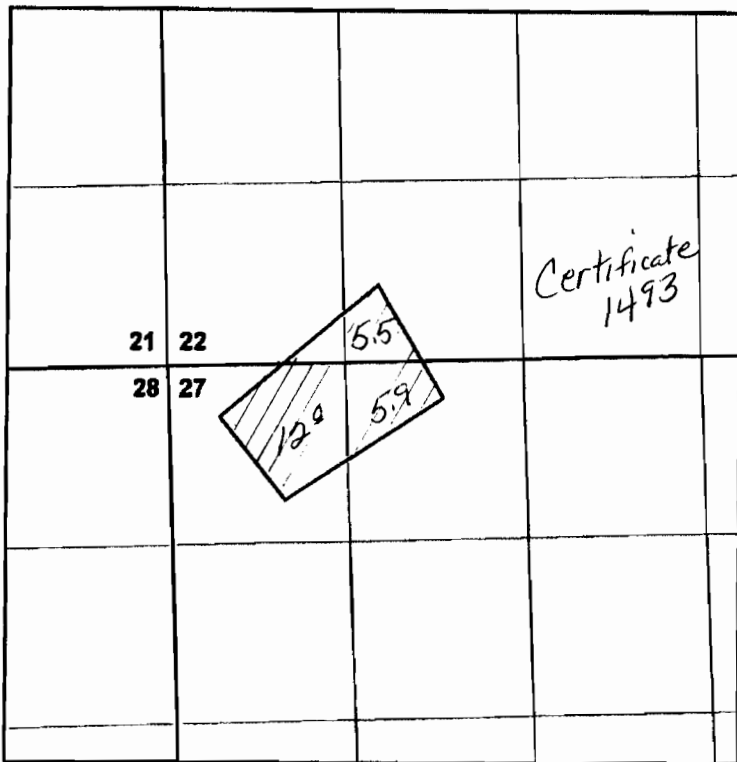
- * Jacobson: SESW/2100'E + 150'N from SW Cor, Sec. 28, 6S 39E
- * Harlan - Sanders: SWSE/2280'W + 850'N from SE COR, sec 28, 6S 39E

"To" Lands



T. 6S, R. 39E, WM
Sect. 22 TL # 3900

Scale: 1" = 1320'



SESW 5.5 Sec 22 6S 39E
NENW 5.9 Sec 27 6S 39E
NWNW 12.0 Sec 27 6S 39E

Total 23.4 ac.

Proposed POD
Lun Ditch: 2600' N + 440' W
from the SE. cor. sec 28
6S 39E/NESE

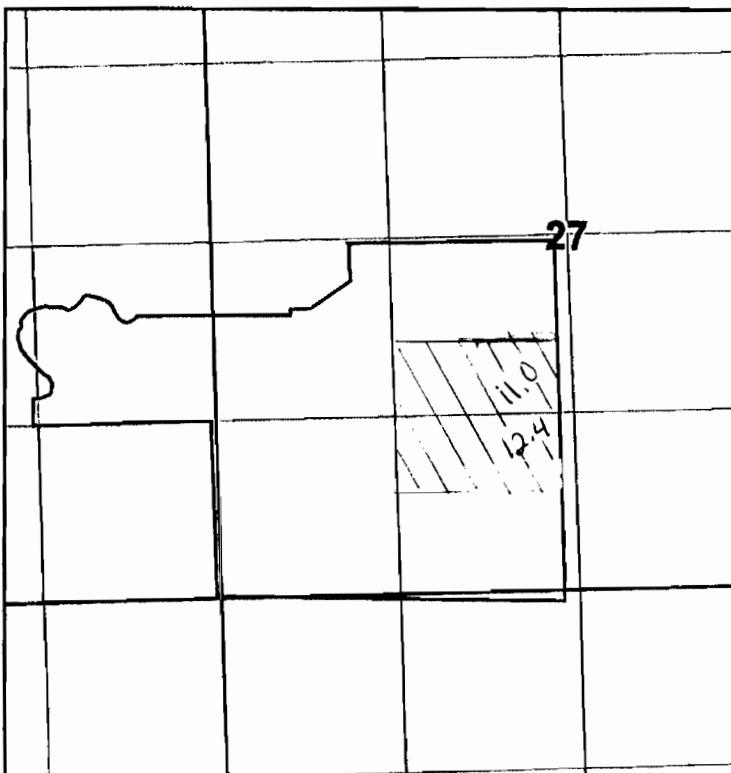
RECEIVED

T. 6S, R. 39E, WM
TL #2200

T 11006

JAN 14 2010

WATER RESOURCES DEPT
SALEM, OREGON



Certificate- 79534

NESW 11.0 ac Sec 27 6S 39E
SESW 12.4 ac Sec 27 6S 39E

Total 23.4 ac.

Proposed Points of Diversion

Jacobson: SESW 2100' E + 150' N
from the SW. cor sect. 28 6S 39E

Harlan Sanders: SWSE 2280' W + 850' N
from the SE Cor. Sec. 28 6S 39E