

MAR 17 2009

RECEIVED

1 10823

THIS MAP WAS PREPARED FOR
ASSESSMENT PURPOSE ONLY

Change
SECTION 36 T4S R4W W.M.
YAMHILL COUNTY

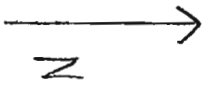
SEE MAP 4 4 35

Amended 1-15-2010

4 4 36

26	28
36	36

26	30
36	31
CANCELLED	
800	



2009 Goodrich to Goodrich

Location of primary point of diversion, a well
870 feet west and 900 feet south from the
NE corner Section 36
T4S R4W

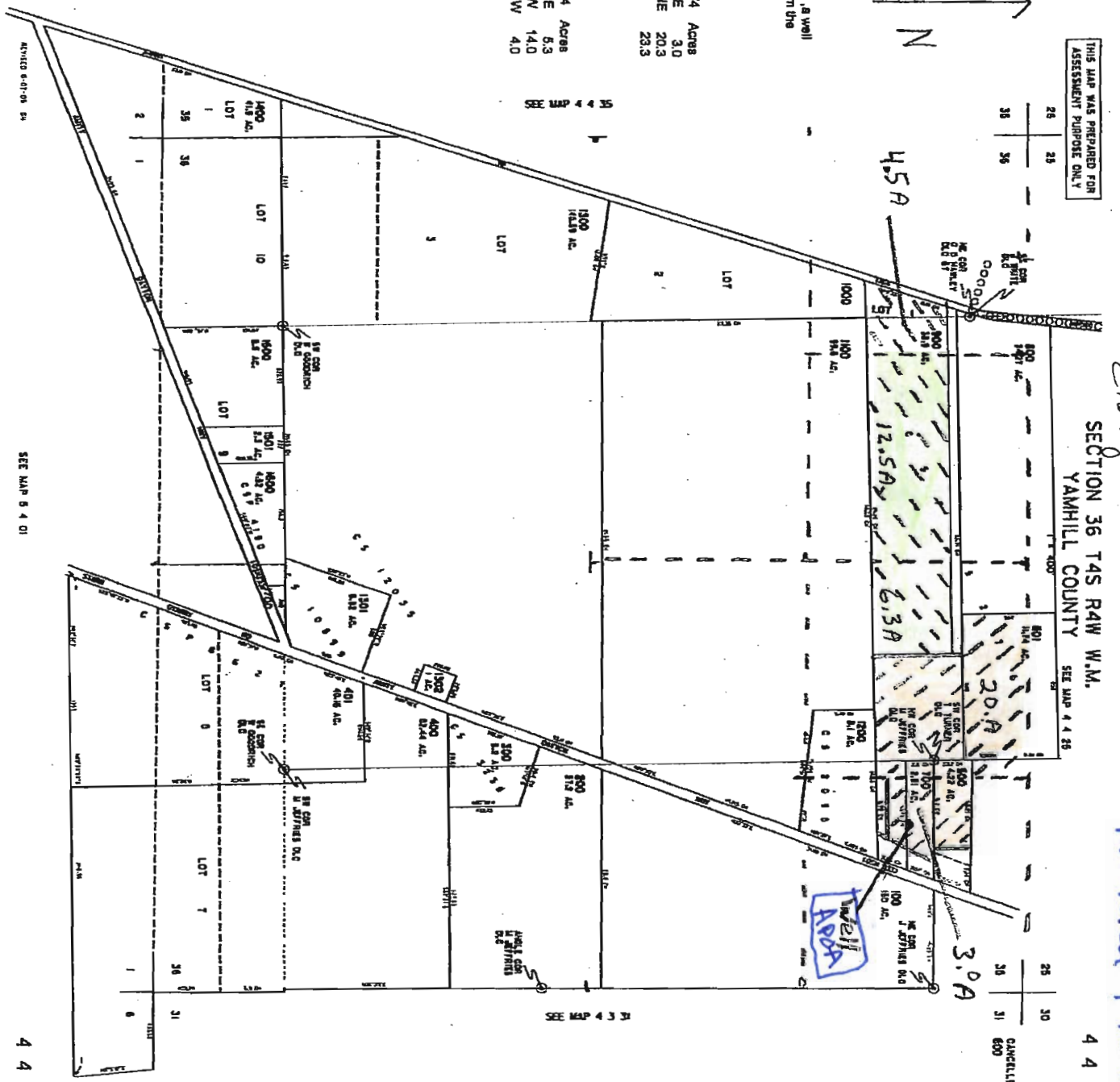
From

Township Range Mer	Section 1/4 1/4	Acres
4S 4W WM	36 NE NE	3.0
4S 4W WM	36 NW NE	20.3
Total		23.3

To

Township Range Mer	Section 1/4 1/4	Acres
4S 4W WM	36 NW NE	5.3
4S 4W WM	36 NE NW	14.0
4S 4W WM	36 NW NW	4.0

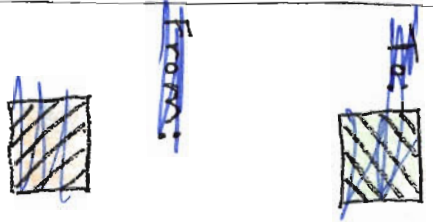
1 Inch equals 1000 feet



ALVING 6-01-95 54

SEE MAP 5 4 01

4 4 36



9

6