

John A. Short

From: Dorothy Pedersen [pedersdi@wrd.state.or.us]
Sent: Friday, February 19, 2010 2:24 PM
To: John A. Short
Subject: RE: Transfer map scale

John,

Yes, we will accept the two maps you already have for the Butler transfer at the scale of 1"=1,000'. Be sure to submit a copy of this email with the application and map when you file the transfer, as evidence of prior Department approval of the non-standard map scale.

Thank you,

Dorothy

From: John A. Short [mailto:johnshort@usa.com]
Sent: Friday, February 19, 2010 9:19 AM
To: Dorothy Pedersen
Subject: Transfer map scale

Hello Dorothy,

Per our discussion, I wanted to confirm with you that the first two transfer maps for the Butler transfer and redescription which are already finished are acceptable at a scale of 1"=1,000'. All subsequent transfer maps will be at 1"=400' or 1"=1,320'. Thanks for your understanding on these first two since they are already paid for.

Sincerely,
John

John A. Short
P.O. Box 1830
Bend, OR 97709
(541) 408-7415

johnshort@usa.com

www.oregonwater.us

RECEIVED

FEB 24 2010

**WATER RESOURCES DEPT
SALEM, OREGON**

Information from ESET NOD32 Antivirus, version of virus signature database 4881
(20100219) _____

The message was checked by ESET NOD32 Antivirus.

<http://www.eset.com>

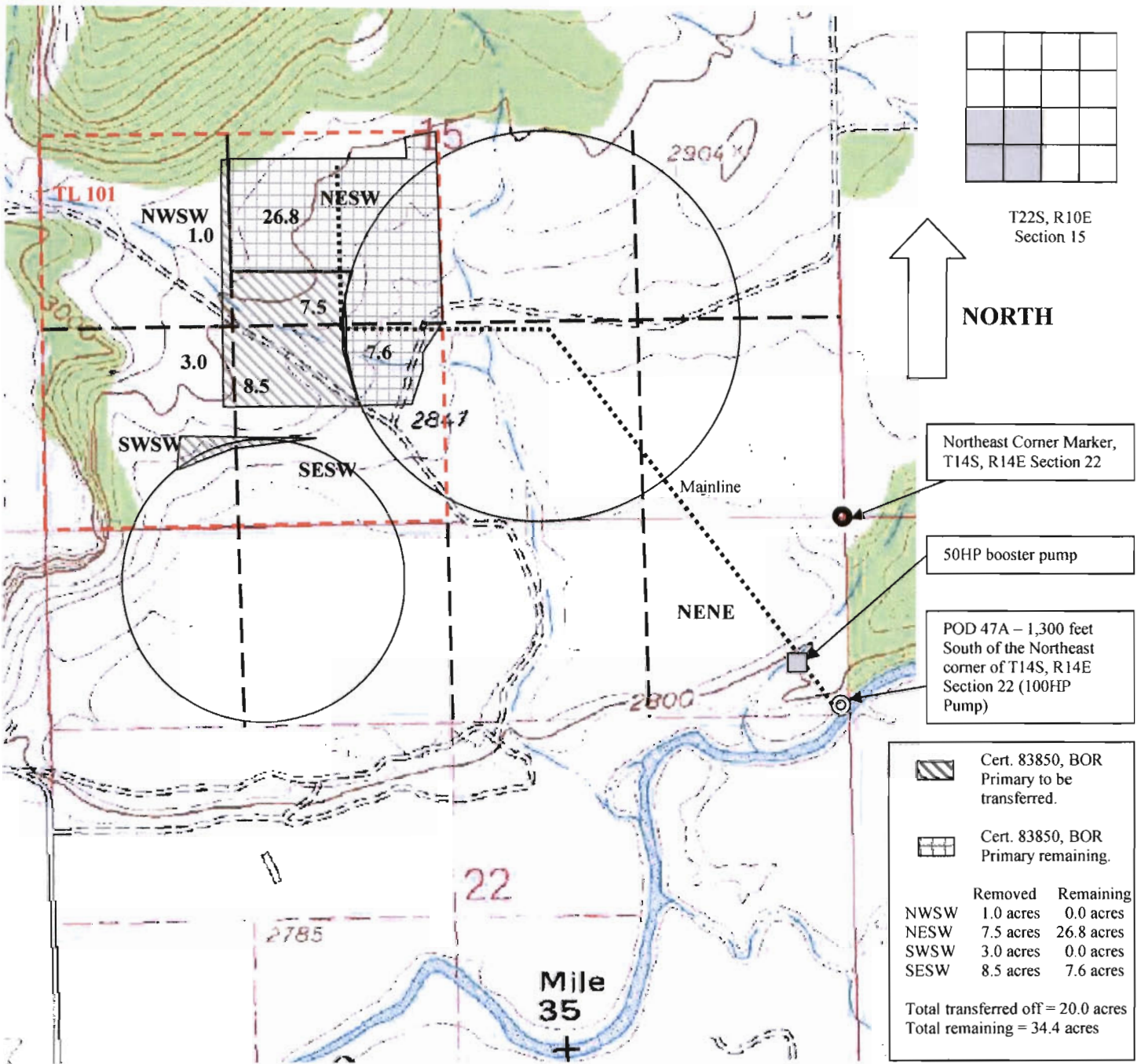
Information from ESET NOD32 Antivirus, version of virus signature database 4881
(20100219) _____

The message was checked by ESET NOD32 Antivirus.

<http://www.eset.com>

T 11023

2/19/2010



Butler Ranch Inc. "Off" Map

Approximate Tax Lot Boundaries Approximate POD Location Corner Marker

T14S R14E Section 15 Tax Lot 101

Scale 1" = 1,000 feet

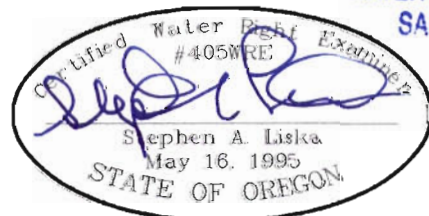
John A. Short

P.O. Box 1830
Bend, OR 97709
541-408-7415

johnshort@usa.com
www.oregonwater.us

February 19, 2010

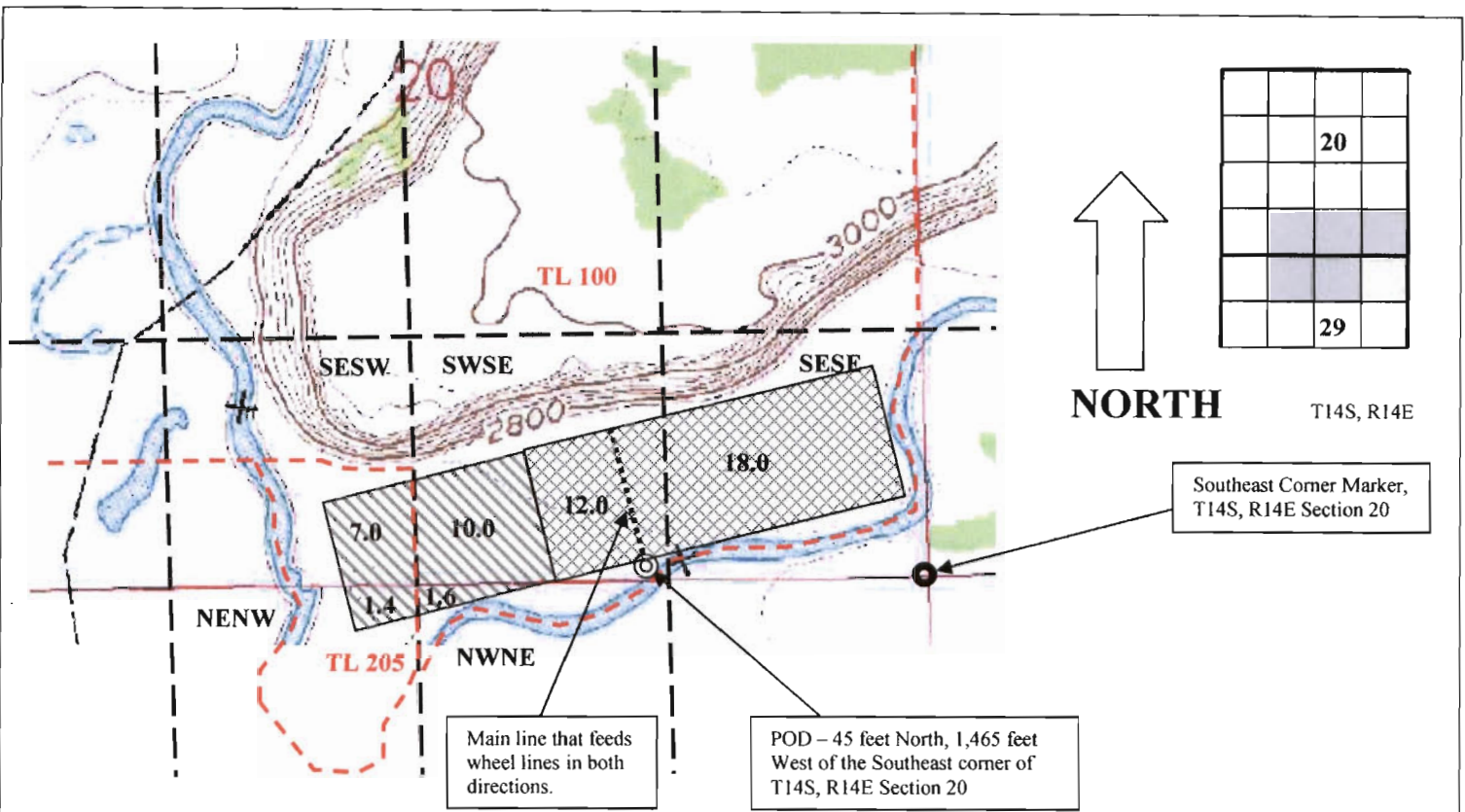
T 11023



RECEIVED

FEB 24 2010


WATER RESOURCES DEPT
SALEM, OREGON



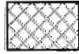
Southeast Corner Marker,
T14S, R14E Section 20

Main line that feeds
wheel lines in both
directions.

POD - 45 feet North, 1,465 feet
West of the Southeast corner of
T14S, R14E Section 20


Transfer ON
Cert 83850 - BOR
 SWSE 10.0 acres
 SESW 7.0 acres
 Section 20
 NENW 1.4 acres
 NWNE 1.6 acres
 Section 29

Scale 1" = 1,000 feet





Redescription
Cert 11698 - 1929
 SESE 18.0 acres
 SWSE 12.0 acres
 Section 20

RECEIVED

FEB 24 2010

WATER RESOURCES DEPT
SALEM, OREGON

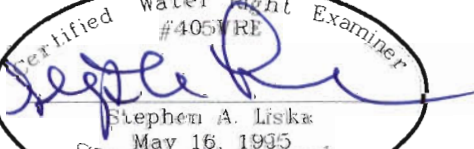
Butler Ranch Inc. "On" Map

 Approximate Tax Lot Boundaries  Approximate POD Location  Corner Marker

T14S R14E Section 20 Tax Lot 100 & Section 29 Tax Lot 205

John A. Short
 P.O. Box 1830
 Bend, OR 97709
 541-408-7415
johnshort@usa.com

www.oregonwater.us
 February 10, 2010

Verified Water Right Examiner
 #4057RE

 Stephen A. Liska
 May 16, 1995
 STATE OF OREGON

T 11023